

Product datasheet for **MG216035**

Folh1 (NM_001159706) Mouse Tagged ORF Clone

Product data:

Product Type:	Expression Plasmids
Product Name:	Folh1 (NM_001159706) Mouse Tagged ORF Clone
Tag:	TurboGFP
Symbol:	Folh1
Synonyms:	GCP2; mopsm
Mammalian Cell Selection:	Neomycin
Vector:	pCMV6-AC-GFP (PS100010)
E. coli Selection:	Ampicillin (100 ug/mL)



[View online »](#)

ORF Nucleotide Sequence:

>MG216035 representing NM_001159706
 Red=Cloning site Blue=ORF Green=Tags(s)

TTTTGTAATACGACTCACTATAGGGCGGCCGGAATTCGTCGACTGGATCCGGTACCGAGGAGATCTGCC
 GCC**CGGATCGCC**

ATGTGGAACGCACTGCAGGACAGAGACTCCGCGGAGGTCCTGGGACACCGCCAGCGCTGGCTCCGTGTTG
 GGACACTGGTGCCTTTAACCGAACCTTCCTCATTGGCTTCCTCTTTGGGTGGTTTATAAAACCTTC
 CAATGAAGCTACTGGTAATGTTTCCATTCTGGCATGAAGAAGGAGTTTTTGCATGAATTGAAGGCTGAG
 AACATCAAAAAATTTTTATACAATTTACACGACACCACTTGGCAGGAACACAAAAAATTTTGGAGC
 TTGCAAAGCAAATTCATGACCAGTGAAAGAATTTGGCCTGGATTTGGTTGAGTTATCCATTACGATGT
 CTTGCTGTCTATCCAAATAAACTCATCTAATAATATCTCAATAATTAATGAAGATGGAATGAGATT
 TTCAAAACATCATTATCTGAACAGCCACCCAGGATATGAGAATATATCAGATGTAGTGCCACCATAACA
 GTGCCCTCTCCACAAGGGACACCAGAGGTGATCTAGTGTATGTCAACTATGCACGAAGTGAAGACTT
 CTTTAACTGGAACGGGAAATGAAGATCAGTTGTTCTGGGAAGATTGTGATTGCCAGATATGGGAAAGTG
 TTCAGAGGAAATATGGTTAAAAATGCTCAACTGGCAGGGGCAAAAGGAATGATTCTGTACTCAGACCCTG
 CTGACTACTTTGTTCTCGCGGTGAAGTCTATCCAGATGGCTGGAACCTCCCTGGAGGTGGTGTCCAACG
 TGGAAATGTCTTAAATCTTAATGGTGCAGGTGACCCGCTCACACCAGGTTACCCAGCAAATGAACATGCT
 TATAGGCATGAGTTGACAAACGCTGTTGGCCTTCCAAGTATTCCTGTCCATCCTATTGGATATGATGATG
 CACAGAACTCTTAGAAAAGGTCAAGATGCATATTCACCTTACACTAAAGTGACAAGAATCTATAATGT
 CATTGGCACCCCTCAAAGGAGCTCTGGAACCAGACAGATATGTTATTCTTGGAGGTACCCGAGATGCTTGG
 GTATTTGGTGGCATTGACCCCTCAGAGTGGAGCAGCTGTTGTTTCATGAAATTTGCGGAGCTTTGGAACCC
 TGAAGAAGAAAGGACGGAGGCCCTAGAAGGACAATTTTGTGCAAGCTGGGATGCAGAAGAATTTGGCCT
 TCTTGGTTCTACTGAGTGGGCAGAGGAACATTCAGACTCCTACAAGAGCGAGGTGGCTTATATTAAT
 GCTGATTCTTCCATAGAAGGAAATTACACTCTAAGAGTTGATTGCACACCACTGATGTACAGCTTAGTGT
 ACAACCTAACAAAAGAGCTGCAAAGCCAGATGAAGGTTTTGAAGGAAAACTCTTTATGACAGCTGGAA
 AGAAAAGAGTCTTACCTGAGTTCATTGGAATGCCCAGAATTAGCAAGCTGGGGTCTGGCAATGATTTT
 GAAGTGTCTTCCAAAGACTTGAATGCTTCAGGCAGAGCCGATATACTAAAAATGGAAAACCTAACA
 AAGTCAGCAGCTATCCTCTATCACAGTGTCTATGAAACATATGAGCTGGTAGTAAAATTTTATGACCC
 AACATTTAAATACCACCTCACTGTGCCAGGTTGAGGAGCAATGGTATTTGAACTTGCCAATTTCTATA
 GTGCTTCCCTTTGACTGCCAAAGTTATGCTGTAGCTCTGAAGAAGTATGCTGACACTATCTACAATTTT
 CAATGAAACATCCACAAGAAATGAAGGCTTACATGATATCATTTGATTCACTGTTTTCTGCAGTCAATAA
 TTTTACAGATGTTGCATCTAAGTTCAATCAGAGACTGCAAGAGTTAGACAAAAGCAACCCATATTAAGT
 AGAATTATGAATGACCAGCTGATGTATCTGGAACGTGCATTTCATTGATCCTTTAGGCTTACCAGGAAGGC
 CTTTCTACAGGCATATCATCTATGCTCCAAGCAGCCACAACAAGTATGCAGGAGAATCATTCCTGGGAT
 TTATGATGCCCTTTTGTATATAAGTAGCAAAGTCAATGCTTCTAAGGCCTGGAACGAAGTGAAGAGACAG
 ATTTCTATTGCAACCTTTACAGTGAAGCTGCAGCAGAGACTCTGAGGGAAGTAGCT

ACGCGTACGCGGCCGCTCGAG – GFP Tag – **GTTTAA**

Protein Sequence: >MG216035 representing NM_001159706
 Red=Cloning site Green=Tags(s)

MWNAIQDRDSEAVLGHQRQLRVGTLVLALVTGTFLLIGFLFGWFIKPSNEATGNVSHSGMKKEFLHELKAE
 NIKKFLYNFTRTPHLAGTQNNFELAKQIHDQWKEFGLDLVELSHYDVLLSYPNKTHPNYISIIINEDGNEI
 FKTSLSQPPPGYENISDVVPPYSAFSPQGTPEGDLVYVNYARTEDFFKLEREMKISCSGKIVIARYGKV
 FRGNMVKNAQLAGAKGMILYSDDPADYFVPAVKSYPDGWNLPGGGVQRGNVNLNGAGDPLTPGYPANEHA
 YRHELTAVGLPSIPVHPIGYDDAQKLEKVKMHIHSYTKVTRIYNVIGTLKGALEPDRYVILGGHRDAW
 VFGGIDPQSGAAVVEIVRSFGLTKKKGRPRRTILFASWDAEEFGLLGSTEWAEHSRLLQERGVAYIN
 ADSSIEGNYTLRVDTPLMYSLVYNLTKEQSPDEGFEGKSLYDSWKEKSPSPEFIGMPRIKSLGSGNDF
 EVFFQRLGIASGRARYTKNWKTKVSSYPLYHSVYETIYELVVKFYDPTFKYHLTVAQVRGAMVFELANSI
 VLPFDCQSYAVALKKYADTIYINISMKHPQEMKAYMISFDSLFSAVNNFTDVASKFNQRLQELDKSNPILL
 RIMNDQLMYLERAFIDPLGLPGRPFYRHIYAPSSHNYAGESFPGIYDALFDISSKVNASKAWNEVKRQ
 ISIAFTTVQAAAETLREVA

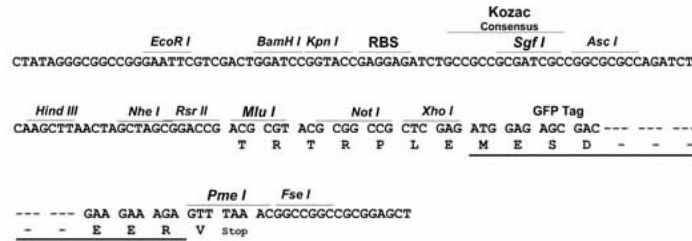
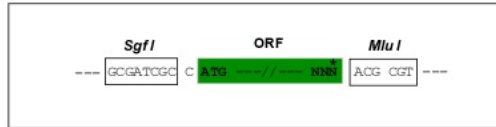
TRTRPLE - GFP Tag - V

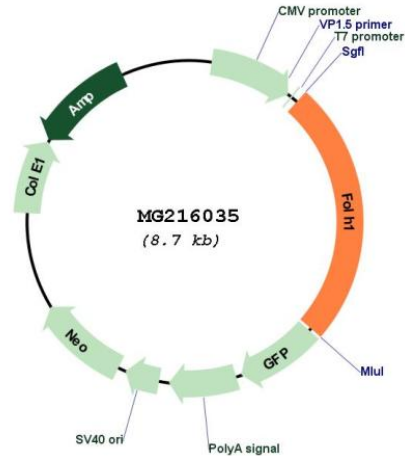
Restriction Sites:

SgfI-MluI

Cloning Scheme:

Cloning sites used for ORF Shutting:



Plasmid Map:


ACCN: NM_001159706

ORF Size: 2157 bp

OTI Disclaimer: The molecular sequence of this clone aligns with the gene accession number as a point of reference only. However, individual transcript sequences of the same gene can differ through naturally occurring variations (e.g. polymorphisms), each with its own valid existence. This clone is substantially in agreement with the reference, but a complete review of all prevailing variants is recommended prior to use. [More info](#)

OTI Annotation: This clone was engineered to express the complete ORF with an expression tag. Expression varies depending on the nature of the gene.

Components: The ORF clone is ion-exchange column purified and shipped in a 2D barcoded Matrix tube containing 10ug of transfection-ready, dried plasmid DNA (reconstitute with 100 ul of water).

Reconstitution Method:

1. Centrifuge at 5,000xg for 5min.
2. Carefully open the tube and add 100ul of sterile water to dissolve the DNA.
3. Close the tube and incubate for 10 minutes at room temperature.
4. Briefly vortex the tube and then do a quick spin (less than 5000xg) to concentrate the liquid at the bottom.
5. Store the suspended plasmid at -20°C. The DNA is stable for at least one year from date of shipping when stored at -20°C.

RefSeq: [NM_001159706.1](#), [NP_001153178.1](#)

RefSeq Size: 2948 bp

RefSeq ORF: 2160 bp

Locus ID: 53320

UniProt ID: [O35409](#)

Cytogenetics: 7 D3

Gene Summary: Has both folate hydrolase and N-acetylated-alpha-linked-acidic dipeptidase (NAALADase) activity. Has a preference for tri-alpha-glutamate peptides (By similarity). In the intestine, required for the uptake of folate. In the brain, modulates excitatory neurotransmission through the hydrolysis of the neuropeptide, N-aceylaspartyglutamate (NAAG), thereby releasing glutamate.[UniProtKB/Swiss-Prot Function]