

Product datasheet for **MG216024**

Vwa5a (NM_172767) Mouse Tagged ORF Clone

Product data:

Product Type:	Expression Plasmids
Product Name:	Vwa5a (NM_172767) Mouse Tagged ORF Clone
Tag:	TurboGFP
Symbol:	Vwa5a
Synonyms:	5830475I06Rik; AW552491; BCSC-1; E130119J22; Loh11cr2a
Mammalian Cell Selection:	Neomycin
Vector:	pCMV6-AC-GFP (PS100010)
E. coli Selection:	Ampicillin (100 ug/mL)



[View online »](#)

ORF Nucleotide
Sequence:

>MG216024 representing NM_172767
Red=Cloning site Blue=ORF Green=Tags(s)

TTTTGTAATACGACTCACTATAGGGCGGCCGGAATTCGTCGACTGGATCCGGTACCGAGGAGATCTGCC
GCC**CGCATCGCC**

ATGGAGCATCACTGTGGTCTAATCACTAGCAACAAAGAGACAGTACCCTGAAAAATATCTCAGTAACAT
TGTCATCAATGAATTTGTGGCTGCTGTGGTGGCAACCTTAAATTACGAGAATGAGGAGAAAGTCCCAT
AGAGGCGACCTTTGTGTTTCTATGGATGAAGACTCTGCTGTCTACAGCTTTGAAGCCTTGGTGGATGGG
AAGAAAATTGTGGCAGAGTTGCAGGATAAGATGAAGGCTCACAGCGAGTATGAGGAAGCCCTCTCCAGG
GCCACCAAGCATACTTATTGGAAGAGGATGACTATTCCAGAGATGTCTTTTCTTGAACGTGGGGAACCT
GCAGCCTGGAGCTAAGGTTGCAGTTACCCTGAGGTATGTGCAGGAAGTCCCTTGGAAACAGATGGGGCC
CTGCGCTACCTGCTCCAGCAATCTTGAATCCAAGATATCAGCTCTCTGAACAGTCAGCAACAGTTGCT
TGAACATCCAGAAACCCACAGTCCCTTTGGAAGACCTGCCTTACACACTCAACATGACTGCCACCATCAC
TTCCAGCATGGTATTGAAAGGGTCCAGTCCAAGTCTCTTTGAGCCCTATTCAGTACCTTACAGATGAC
AAGACTTCTGCTCAGTTTCTTACTGACTGAAGGGCACAAGTTTGACCGGGATGTGGAACCTCTGATTTACT
ACAATGAAGTGCACAGCCCCAGTGTAGCTGTGGAATGGGGATGCTGGACATGAAGCCAGACAGTTTGT
GGGAGCTCCTTCTGCAATGGTGAAGTTTCTACCCAGATATCCAGAAAGTGGAAAGCCTCAAAGGCTGTGGA
GAATTTGTGTTTCTATGGACCGTTTCCAGAAAGTATGGACTCCCCCATGAGCACAGAGAACAATTTCTCAGC
TACGCATCGAGGCTGCCAAGGAACTCTGTTGCTGTTGCTGAAGAGTTTGCCTATGGGTTGTTATTTTAA
TATCTATGGATTTGGATCTTCTATGAGAAATCTTTCCGGAGAGTGTGAAGTACACTCAGGATACAATG
GAGGACGCAAGTAAAAGAGTGAAGGCTTTAAAAGCCAACCTTAGGGGACTGAAATCTTGACACCCCTCT
GCAACATTTACAAGGCATCCTCCATTCTGGTCAATCCCTACAGCTCTTTGCTTTCAGGGATGGAGAAGT
GAGTGACACATTTAGTGTCAATAGAGAAGTTAAGTTAAACAGCAAGAAACACAGATGTTTCTCTTTTGGGA
ATTGGACAAGGAGCCTCGACCAGTTTAATCAAAAATATCGCCCGGTATCAGGGGACTGCAGTGTTTA
TCACAGGCAAGGACAGGATGCAGACCAAGGCTCTTGGGCTCTCAAGTTTCTACAGTGTGCAGTGGGA
TAACATCTCTAAGTTGGGATTTGCCTCCTGGTTTGTCTGTTAAATGCTTTCTCCAGAGCAACTTACC
ATCTTTAGGGGTCAGAGGTTAATCATCTATGCACAAGTACTGGGCTTATGCCTCAAGTGGAGAGCACAG
GAGCAGTGTGCCTCAAGCACATCCTCCAGGAGTGGAGTCTGGAAAACAGGGTGCATTTTCCCTGCAACC
CAAGGCAATGACAATTTACCATTTCATCGTTGGCTGCAAAGTCTTGATTGAGTAAAGGATTTTGGGA
TCCAGGAGGCTCAAAGAAGAAAAGAAAGATGTGATGAACATCAGCCTTCAGTCTGGAGTCTTACGCT
CCTTACAGCCTTCAATGCCATAAACAAGGAGCTGAACAAACAGTGCAGGGGCTCTGGCCACAGAGT
GATTCCTAGGCCAGTGTGGCTGGATCTAGTAGTATGCGGTTCTACTCCAGTTTCTCTGGTGGCTTTAAA
GGCCACAGCCAAGAAGTTTACGTGTACCAGCATATGATTTATGTTTACAGCAGAAAGTGTAAATCTTGTCC
TCAAAAAATCTGCGTGTCTGCTATACAGAAGAAAAGACAAATCTTCTACCAATAAAGCAACTTGAA
AAAGGAACACAAAGCATTGGAGAGAATGCTGTGGTGCAGCTGATTTCTTCCAAAAGGCAATGGCTCC
TGGGAGCTAGATGAAGATTTGACCAAGATCCTGGGCACTAAGTCAAAGACATCAAGGCTGCAAACCCCTG
CCAAGCATGAGGACCCCTCAGCCTGGTCCACAGTGTGGCTGTGGTCTGGTTGCATGCCAACGGCACAGA
CTTAAAGTGTGAATGGGAGCTTCTGAAAGGAAGGCTGTGGCCTGGCTTTCATGACCATGCAGGTTCTCTC
ATCCCCATGCTTGTGCAAGCTGCCAATAGTCTCCTGAAATTATCTGTGAATCCTGCTGTCTTTGGCGTC

ACGCGTACGCGGCCGCTCGAG - GFP Tag - GTTTAA

Protein Sequence: >MG216024 representing NM_172767
 Red=Cloning site Green=Tags(s)

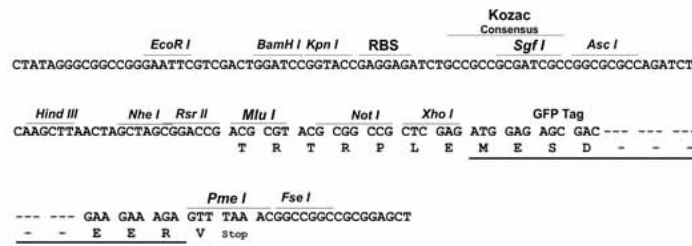
```
MEHHCGLITSNKETVPLKNI SVTLSINEFVAAVVATLNYENEKVPLEATFVFPMDSDSAVYSFEALVDG
KKIVAEALQDKMAHSEYEEAL SQGHQAYLLEEDDYSRDVFS CNVGNLQPGAKVAVTLRYVQELPLETDGA
LRYLLPAILNPRYQLSEQSANSCLNIQKPTVPLEDLPYTLNMTATITSQHGIERVQSNCSLSPIQYLTDD
KTSAQVSLTEGHKFRDVELLIYNEVHSPSVAVEMGLMDMKPDSL MGAPSAMVSYFYPDIPEVEASKACG
EFVFLMDRSGSMDSPMSTENNSQLRIEAAKETLLLLL KSLPMGCYFNIYGFSSYEKFFPESVKYTQDTM
EDAVKRVKALKANLGGTEILTPLCNIYKASSIPGHPLQLFVFTDGEVSDTF SVIREVKLNSKKHRCFSFG
IGQGASTSLIKNIARVSGGTAVFITGKDRMQTKALGSLKFALQCAVDNISL SWDLPPGLSVKMLSPEQLT
IFRGQRLIIYAQLTGLMPQVESTGAVCLKHILQGRSLENRVTFSLQPKANDNFTI HRLAAKSLIQTKDFG
SQEASKEEKEDVMNISLQSGVLSSTAFIAINKELNKPVQGPLAHRVIPRPMAGSSMRFYSSFSGGFK
GPQPRSLRVPAYDLCSAESANLVLKKSACSAIQKKKTNSTNKS NLKKEHKAFGENAVVQLISLQKANGS
WELDEDLTKILGTSKDIKAANPAKHEDPSAWSTVLAVVWLHANGTDLKCEWELLERKAVAWLHDHAGSS
IPMLVQAANSLKLSVNPVAVFGV
```

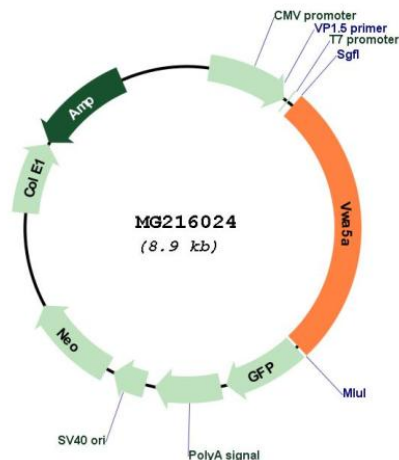
TRTRPLE - GFP Tag - V

Restriction Sites: SgfI-MluI

Cloning Scheme:

Cloning sites used for ORF Shuttling:



Plasmid Map:


ACCN: NM_172767

ORF Size: 2379 bp

OTI Disclaimer: The molecular sequence of this clone aligns with the gene accession number as a point of reference only. However, individual transcript sequences of the same gene can differ through naturally occurring variations (e.g. polymorphisms), each with its own valid existence. This clone is substantially in agreement with the reference, but a complete review of all prevailing variants is recommended prior to use. [More info](#)

OTI Annotation: This clone was engineered to express the complete ORF with an expression tag. Expression varies depending on the nature of the gene.

Components: The ORF clone is ion-exchange column purified and shipped in a 2D barcoded Matrix tube containing 10ug of transfection-ready, dried plasmid DNA (reconstitute with 100 ul of water).

Reconstitution Method:

1. Centrifuge at 5,000xg for 5min.
2. Carefully open the tube and add 100ul of sterile water to dissolve the DNA.
3. Close the tube and incubate for 10 minutes at room temperature.
4. Briefly vortex the tube and then do a quick spin (less than 5000xg) to concentrate the liquid at the bottom.
5. Store the suspended plasmid at -20°C. The DNA is stable for at least one year from date of shipping when stored at -20°C.

RefSeq: [NM_172767.3](#), [NP_766355.3](#)

RefSeq Size: 4157 bp

RefSeq ORF: 2382 bp

Locus ID: 67776

UniProt ID: [Q99KC8](#)

Cytogenetics: 9 A5.1

Gene Summary:

May play a role in tumorigenesis as a tumor suppressor. Altered expression of this protein and disruption of the molecular pathway it is involved in may contribute directly to or modify tumorigenesis (By similarity).[UniProtKB/Swiss-Prot Function]