

Product datasheet for **MG216019**

Megf6 (NM_001162977) Mouse Tagged ORF Clone

Product data:

Product Type:	Expression Plasmids
Tag:	TurboGFP
Symbol:	Megf6
Synonyms:	2600001P17Rik; Egfl3
Mammalian Cell	Neomycin
Selection:	
Vector:	pCMV6-AC-GFP (PS100010)
E. coli Selection:	Ampicillin (100 ug/mL)

ORF Nucleotide Sequence: >MG216019 representing NM_001162977
Red=Cloning site Blue=ORF Green=Tags(s)

TTTTGTAATACGACTCACTATAGGGCGGCCGGGAATTCGTCGACTGGATCCGGTACCGAGGAGATCTGCC
GCCCGCATCGCC

ATGCCTGTCGGGGTGGAGGCGAGGGCGTCTTGGCGCGTGGTGGCCCTGACGCTGCTGTGCTCCCGCCG
TGCCCTGCAGCCTCCAGCCGCTACCCCGCCCGCTGCAGCCGAGCATGCCCCACGTGTGTGCAGAACA
GAAGCTGACCCTGGTGGCCACCGCAGCCTTGTGTGCAAGCCTTCAGCCCGGTAGTGCCTGTGTGGAGG
TCGGGCTGCGGGCAGCAGGCATGGTGTGTGGCCAAGAGCGCAGGACTGTGTACTATATGAGCTACAGGC
AGGTGTATGCCACAGAGGCTCGCACTGTGTTCAAGGTGCTGTCTGGCTGGAGCCAGAAGCCTGGCCAGGA
AGGCTGCCTCTCAGATGTGGATGAATGTGCCAATGCCAACGGGGGCTGTGAGGGCCCGTGTGCAACACC
GTGGGTGGCTTTTACTGTCGCTGCCACCCGGCTACCAGCTGCAGGGTGTGGCAAAACGTGCCAAGATG
TGGATGAATGTCGATCACACAATGGTGGTGTCAACACAGGTGTGTGAATACCCCGGCTCTTACCTCTG
TGAGTGCAAACCCGGCTCCCGCTCCACACAGATGGCAGGACCTGCCTGGCCATCAGCTCCTGCCTCTG
GGAAATGGTGGCTGCCAGCATCAGTGTGTACAGCTCACCGTGACACAGCACCGCTGCCAGTCCCGCCCC
AGTACCAGCTGCAGGAGGATGGCAGGCGCTGTGTCCGGAGAAGCCCTGTGCAGACGGCAATGGTGGCTG
TATGCATACATGCCAGGAACCTCCGGGCTTGGCCACTGTGGCTGCCACCCAGGTTACCAGCTTGTGTGCA
GACCCGAAAGCCTGTGAAGATGTGGACGAATGTGCCTTGGGTGTGCCCAAGTGTGCTCATGGCTGCCTCA
ACACTCAGGGTCTTTAAGTGTGTGTGTACGCAGGCTATGAGCTGGGTGCTGATGGCCGGCAGTGTTA
CCGGATCGAGATGGAGATTGTGAACAGCTGCGAGGCTGGCAACGGAGGCTGCTCACACGGCTGTAGTAC
ACTAGCACAGGGCCCTGTGCACCTGCCCTCGTGGTTATGAGCTGGATGAGGACCAGAAGACCTGCATTG
ACATCGACGACTGCGCCAACCTCCTCGTGTGCCAGCAGGTGTGTGCCAACCCCGGTGGGTATGAGTGT
TAGTCTGCTTCGCCGGCTACAGACTCAACACAGACGGCTGTGGCTGTGAGGATGTTGACGAGTGTGCCTCT
GGTCACAGCGGCTGCGAACACCACTGTTCTAATCTGGCTGGCTCCTCCAGTGTCTGTGAGGCTGGCT
ACCGCTGGATGAGGACCGCAGGGGCTGCACGCCCTAGAAGAATCCGTGGTGGACCTGGATGGCCAGCT
GCCCTTGTCCGGCCCTGCCCCACATTGCGGTGCTGGGGGATGAGCTTCCACAACCTTCCAAGATGAC
TATGGGCTGAGGAGGAGGCTGTGGCGGAGCTGCGGGGAGAACAACACTCTCACTGAGAAGTTGTCTGCT



TGGATCACTCCTTCGGCCATGACTGCAGCCTAACCTGCGATGACTGCAGGAATGGGGGACCTGCTTCCC
GGGCTTGGATGGCTGTGACTGCCAGAGGGCTGGACCGGATCATCTGCAATGAGACTTGTCTCCAGAC
ACTTTTGGGAAGAACTGTAGCTCTCCCTGCATCTGTGAGATGGTGGGACCTGTGACCCGGTGTGAGG
CCTGCGCGCTGTCCCCAGGCGTCAGTGGAGCCCACTGTGAGGATGGCTGCCCAAGGGCTTCTACGGCAA
ACACTGTCGTAAGAAATGCCACTGTGCTAACCGGGCCGGTGCACCGCCTCTATGGGGCTGCCTCTGT
GACCCAGCCTCTATGGCCGTTTCTGTACCTTGTGCTTCCCTCCCTGGGCTTGGACCGGGCTGTTCTG
AGGACTGCCTTTGTGAGCAGTACACACAAGATCTTGAACCGAAGGATGGCAGCTGCTCTGCAAGGC
CGGCTTCCAGGGCAGCGCTGCGAGGGGAGTGCAGGACCGGCTCCTTTGGGCCAGGCTGCAGAAACCGT
TGCACCTGCCGGCCAGGTGTGGCCTGTGACCTGTGAGTGGCGAGTGTGCGACGAGTGTCTCTCTGGCT
ACCAGGGGGAGGACTGTGGCAAGAGTGCCAGTGGGGACATTTGGTGTGAACTGCTCAGGTTCTCTGCTC
CTGCGTGGGGCCCTGTACCGAGTACGGGGGAGTGTCTGTGCCACCAGGGAAGACTGGGGAGGAC
TGTGGAGCCGACTGTCCGAGGGCCGTTGGGGCTCGGCTGTCAAGAGATCTGCCCTGCATGTGAGCAGT
GTGCCAGTGCACCTGAGACTGGAACCTGCCTGTGTCTTCTGGTTTTGTTGGTAGCCGCTGCCAGGA
TGCTTGGCCAGCAGGCTGGTTGGGACCGCTGCCAGATGAGGTGTGCTGTGCCAATGATGGCATTGC
CATCCGGCCACTGGACGCTGTAGCTGTGCCCTGGGTGGACTGGCCTCAGCTGCCAGAGAGCCTGTGACA
GTGGACACTGGGGCCTGACTGCATCCACCCCTGCAACTGCAAGTGCAGGCCATGGGAACTGTGACCCGT
CAGTGGCCTCTGCCTGTGTGAGGCTGGCTACGAAGTCCGAGTGTGAGCAGTGGTGTGCCAAAGGCTAC
TTTGGGCCCGGCTGCGAGCAGAAGTGCAGTGTGAGCATGGGGCCACCTGTGACCATGTGAGTGGGGCT
GTACCTGCCAGCTGGCTGGAGGGGAAGCTTCTGCGAGCACCTGTCTGTGGCTTCTTTGGGTTAGA
CTGTGGCAGTGCCTGCAACTGCTCCCGGGGCCCCCTGTGATGCTGCTCACTGGCTCGTGCATCTGCCA
GCTGGCCGCTGGGGCCCACTGTGCCAGACTTGCCACCTCTCACCTTTGGGCTTAACTGCAGCCAGA
TTTGTACCTGTTTCAATGGGGCTCTTGGACCTGTCTTGGGCAGTGCCTGTGCTCTGGCTGGAT
GGGACCCACTGCCTGCAGGCTGCCCTGTGGCTGTATGGCAAGAAGTGCAGCATTCTGTCTCTGC
CGAAATGGAGGGAAGTGTGACCCATCTTGGGCCAGTGCACGTGCCAGAGGGTTGGACCGCTTGGCCT
GTGAGAACGAGTGCCTTCTGGACACCATGGGGCTGGTTGCCGGCTCAACTGCAGTTGCCTTAAATGGGG
CACATGTGACCGTCTTACTGGCCACTGCCCTGCCAACTGGCTGGACTGGGGACAAGTGTGAGAGCCCC
TGCCTCAGTGGCATGTTTGGGGTCACTGTGAGGAGCACTGTGCTGCCGAAAGGTGCCACCTGTACCC
ATGTACCGGGGCTGCCTCTGTCCCCAGGATGGAGGGCTCACACTGTGAACAGGCCTGTCCACGTGG
CTGTTTTGGAGAGGCTGTGCTCAGCGTTGCCACTGCCCGCCTGGTGCCTCCTGCCACCATGTCTCTGGA
GAGTGCCTGTCCACCCGGCTTACTGGGCTGGCTGTGAGCAGGCTGCCAGCCTGGCACCTTGGCA
AGGACTGTGAGCACCCGTGCCAATGTCTGGTGGACCTGGGCTGCCACCTGCTTCAAGGGCTGCGT
ATGTGCTGTGTTACCATGGCACCAGTGTGAGCAACGATGCCATCTGGGCGCTATGGGCCAGGCTGT
GAACAAATTTGTAAGTGTCTCAATGGTGGGACCTGCGATCCAGCCAGGGAGCCTGCTACTGCCCTGCTG
GGTTCCTTGGGGCCGACTGTAGCCTTGCCTGTCCACAGGCTCGCTTCCGGCCAGCTGTGCCACGTGTG
TACATGCGGGCAAGGGCGGCATGTGACCCAGTGTGCGGGACTTGCATCTGTCTCCCGGAAGACGGGA
GGCCATTGTGAGCGCGCTGTCCCCAGGACCGGTTTGGCAAGGGCTGTGAACACAAGTGTGCTGCAGGA
ATGGGGCCTGTGTGCTACCAATGGCAGTGTCTCTGCCCCCTGGGCTGGATGGGGCCACACTGTGA
GCACGCTGCCCTGCTGGGCGCTATGGTGTGCTGCCTCCTGGAGTGTCTGTGAGAACAATGGCAGC
TGTGAGCCACCTCCGGCCTTGCCTGTGGCCCTGGCTTCTATGGTCAAGCTTGTGAAGACACCTGCC
CTGCCGGCTTCCATGGATCTGGTTGCCAGAGAGTTTGGGAGTGTCAACAGGGCCTCCTGTGACCTGT
CAGTGGCCGGTGCCTCTGCCCTGTGGCTTCCATGGCCAGTTCTGCGAGAGGGGGTGAAGCCAGGCTTT
TTTGGAGATGGCTGCCTGCAGCAGTGAACCTGCCACGGGTGTGCCCTGTGATCCCATCAGCGGCTCT
GCCTTTGCCACCAGGGCGTGCAGGAACCATGTGACCTAGATTGCAGAAGAGGCCGCTTTGGGCCGGG
CTGTGCCCTGCGCTGTGATTTGGGGTGGGGCTGACTGCGACCCATCAGTGGGCAAGTGCACCTGTG
GACAGCTACACGGGACCACTTCCCGGAAGTGCACACAGCTGTCTCTATCAGACCAGCACCACAGC
ACTCCAGCAGCAAGCCATGAAGCAC

ACCGGTACGCGGCCGCTCGAG - GFP Tag - GTTTAA

Protein Sequence:

>MG216019 representing NM_001162977

Red=Cloning site Green=Tags(s)

```

MPVGVEARASWRVVALTLLLLPAVPAASQPLPPRPLQPSMPHVCAEQKLTLVGHRQPCVQAFSRVVPVWR
SGCGQQAWCVGQERRTYVYMSYRQVYATEARTVFRCCPGWSQKPGQEGCLSDVDECANANGGCEGPCCNT
VGGFYCRCPGYQLQGDGKTCQDVDECRSHNGGCQHRVNTPGSYLCECKPGFRLHTDGRTCLAISSCTL
GNGGCQHQCQVQLTVTQHRQCQRPQYQLQEDGRRCVRRSPCADGNGGCMHTCQELRGLAHCCHPGYQLAA
DRKACEDVDECALGLAQCAHGCLNTQGSFKCVCHAGYELGADGRQCYRIEMEIVNSCEAGNGGCSHGCSH
TSTGPLCTCPRGYELDEDQKTCIDIDDCANSPCCQVQANTPGGYECSFCAGYRLNTDGGCEDVDECAS
GHSGCEHHCNLAGSFQCFCEAGYRLDEDRRGCTPLEESVVDLDGQLPFVRPLPHIAVLGDELQPLFQDD
YGAEAEVAELRGEHTLTKFVCLDHSFGHDLSLTCDDCRNGGTCFPGLDGDCPEGWTGIICNETCPD
TFGKNCSSPICQNGGTCDPVSGACRCPVSGAHCEGCPKGFYGHCRKKCHCANRGRCHRLYGACLC
DPGLYGRFCHLACPPWAFGPGCEDLCEQSHTRSCNSKDGSCSCKAGFQGERCEAECEPGSFPGCRNR
CTCRPGVACDPVSGECRTQCPPGYQGEDCGEQECPVGTFGVNCSGSCVGPACHRVTECLCPPGKTGED
CGADCEPGRWGLGCQEICPACEHGASCDPETGTCLCLPGFVGSRCQDACPAGWFGTGCQMRACANDGHC
HPATGRCSCAPGWTGLSCQRACDSGHWGPDICHPNCNSAGHGNCDAVSLCLCEAGYEGPQCEQWCRQGY
FGPGCEQKCRCEHGATCDHVSACTCPAGWRGFSFEHACPAFFGLDCGSACNCSAGAPCDAVTGSICP
AGRWGPHCAQTCPPLTFGLNCSQICTCFNGASCDPVLGQCHCAPGWMGPTCLQACPAGLYGKNCQHSCLC
RNGNCDPILGQCTCPEGWTGLACENECLPGHHGAGCRLNCSCLNGGTCDRLTGHCRCPGTWTDKQSP
CVSGMFGVHCEEHACRKGATCHVHTGAACLPWGWRGSHCEQACPRGWFGEACAQRCHCPPGASCHHVS
ECHCPPGFTGPGCEQACQPGTFGKDCHEPCQCPGETWACHPASGACVCAAGYHGTDCQQRCPSPGRYGP
EQICKLNGGTCDPATGACYCPAGFLGADCSLACQGRFGPSCAHVCTCGGAACDPVSGTICPPGKTG
GHCERGCQDRFGKGCHEKACRNGGLCHATNGSCSCLGWMGPHCEHACPAAGRYGAACLLCECQNNGS
CEPTSGACLCPGPGFYGQACEDTCPAGFHGSGCQRVCECQQGAPCDPVSGRCLCPAGFHGQFCERGCQPGF
FGDGCLQQCNCPVTGVPDPIISGLCLCPPGRAGTCDLDCRRGRFPGCALRDCGGGADCDPISGQCHCV
DSYTGPTCREVPTQLSSIRPAQHSKAMKH
    
```

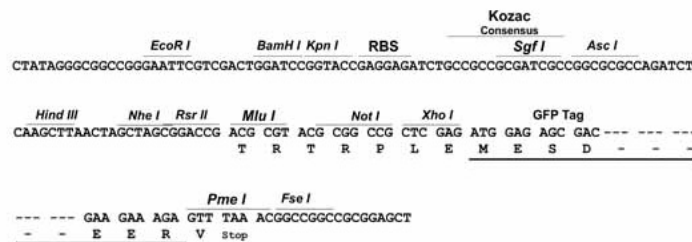
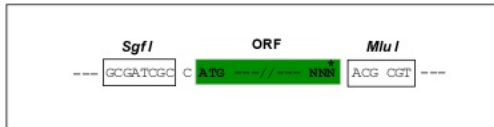
TRTRPLE - GFP Tag - V

Restriction Sites:

SgfI-MluI

Cloning Scheme:

Cloning sites used for ORF Shutting:



ACCN:

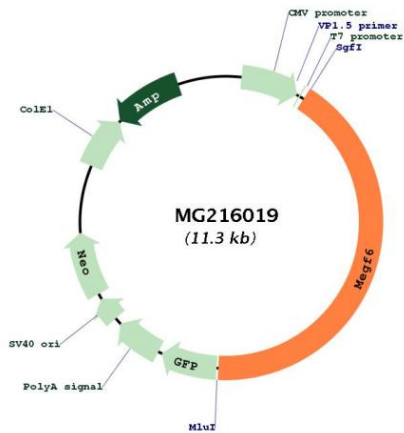
NM_001162977

ORF Size:

4716 bp

OTI Disclaimer:	The molecular sequence of this clone aligns with the gene accession number as a point of reference only. However, individual transcript sequences of the same gene can differ through naturally occurring variations (e.g. polymorphisms), each with its own valid existence. This clone is substantially in agreement with the reference, but a complete review of all prevailing variants is recommended prior to use. More info
OTI Annotation:	This clone was engineered to express the complete ORF with an expression tag. Expression varies depending on the nature of the gene.
Components:	The ORF clone is ion-exchange column purified and shipped in a 2D barcoded Matrix tube containing 10ug of transfection-ready, dried plasmid DNA (reconstitute with 100 ul of water).
Reconstitution Method:	<ol style="list-style-type: none">1. Centrifuge at 5,000xg for 5min.2. Carefully open the tube and add 100ul of sterile water to dissolve the DNA.3. Close the tube and incubate for 10 minutes at room temperature.4. Briefly vortex the tube and then do a quick spin (less than 5000xg) to concentrate the liquid at the bottom.5. Store the suspended plasmid at -20°C. The DNA is stable for at least one year from date of shipping when stored at -20°C.
Note:	Plasmids are not sterile. For experiments where strict sterility is required, filtration with 0.22um filter is required.
RefSeq:	NM_001162977.1 , NP_001156449.1
RefSeq Size:	6876 bp
RefSeq ORF:	4719 bp
Locus ID:	230971
Cytogenetics:	4 E2

Product images:



Circular map for MG216019