

Product datasheet for **MG215995**

Arhgap26 (NM_175164) Mouse Tagged ORF Clone

Product data:

Product Type:	Expression Plasmids
Tag:	TurboGFP
Symbol:	Arhgap26
Synonyms:	1810044B20Rik; 2610010G17Rik; 4933432P15Rik; AI853435; mKIAA0621
Mammalian Cell Selection:	Neomycin
Vector:	pCMV6-AC-GFP (PS100010)
E. coli Selection:	Ampicillin (100 ug/mL)



[View online »](#)

ORF Nucleotide Sequence: >MG215995 representing NM_175164
Red=Cloning site Blue=ORF Green=Tags(s)

TTTTGTAATACGACTCACTATAGGGCGCCGGGAATTCGTGACTGGATCCGGTACCGAGGAGATCTGCC
GCCGCGATCGCC

ATGGGGCTCCCGGCGCTCGAGTTCAGCGACTGCTGCCTCGACAGCCCTCACTTCGAGAGACGCTCAAGT
CACACGAAGCGGAGCTGGACAAGACCAACAAATTCATCAAGGAGCTCATCAAGGACGGGAAGTCGCTCAT
CAGCGCGCTCAAGAATTTGCTTCCGCAAAGCGGAAGTTTGAGATTCTTAAATGAATTTAAATTTTCAG
TGTATAGGAGATGCCGAAACAGATGATGAGATGTGATAGCGAGATCTTTGCAAGAATTTGCTGCTGTTT
TCAGGAATCTTGAAGACGAGCGGAGTGAATGATCGAGAATGCCAGCGAGGTGCTCATCACACCCCTGGA
GAAGTTTCGAAAGGAGCAGATTGGGGCCGCCAGGGAAGCCAAAAAGAAATGACAAAAGAGACCGAGAAG
TACTGCGGCACCTTAGAAAAACATTTGAATTTGCTTCCAAAAAGAAGGAATCCAGCTACAGGAGCGAG
ACAGCCAAGTGACCTGGTTCGGCAACATTTCTACGAAGTATCCCTGGAGTATGTCTTTAAGGTGCAGGA
AGTGCAAGAGAGAAAGATGTTTGAGTTTGTAGACCTCTGCTGGCCTTCTGCAAGGACTCTTCACTTTC
TATCACCATGGTTATGAGCTGGCCAAGGATTTTGGTGACTTTAAGACACAGTTGACCATCAGCATACAAA
ATACAAGAAACCGCTTTGAAGGAACAGGTCTGAGGTGGAATCGCTGATGAAGAAGTGAAGGAAAAACCC
CCTGGAGCACAAGACCATCAGCCCTACACCATGGAAGGGTACCTGTACGTGCAGGAGAAGCGTCACTTT
GGAACCTTCTGGGTGAAGCACTACTGTACCTACCAACGGGATCCAAACAAATCACCATGGTTCATTTCG
ACCAAAAGTCAGGAGGAAAGGGGGGAGAAGACGAGTCCGTTACCCCTCAAATCCTGCACACGGCGAAAGAC
AGACTCCATCGAGAAGCGATTCTGCTTTGACGTGGAAGCAGTAGACAGGCCAGGGGTTATCACCATGCAG
GCGTGTGCGGAAGAGGACCGTAGGCTCTGGATGGAAGCCATGGATGGCCGGGAACCTGTGTACAACCTCA
ACAGAGACAGCCAGAGCGAAGGGACCGACAATTGGACAGTATCGGCTTCAGCATAATAAGGAAATGCAT
CCATGCGGTGGAGACCAGAGGGATCAATGAGCAGGGGCTCTACCGAATCGTGGGGGTCAACTCCAGGGTG
CAGAAGTTGCTGAGCGTCTGATGGACCCAAAGCAGCTTCTGAGACAGAACTGATATCTGTGCCGAAT
GGGAGATAAAGACCGTCAACAGTCTGTAAGACCTACCTGAGAATGCTCCCAGGACCCCTCATGATGTA
CCAGTTTCAAGAAGTTTCATCAAAGCAGCAAAGCTGGAACCAAGAGACTCGAGTGTCTGAGATCCAC
AGTCTTGCCATCGGCTCCCGGAGAAGAATCGGCAGATGTTGCAGCTGCTCATGAACCACTGGCCAATG
TTGCTAACCAACCACAAGCAGAATCTGATGACTGTGGCAAACCTGGGCGTGGTGTGGACCCACCTTGCT
TCGGCCTCAGGAAGAACTGTGGCGCCATCATGGACATCAAGTTTCAGAACATTGTCATCGAGATCTTA
ATCGAGAACCATGAGAAGATATCAACACGGTGCCTGATGTGCCCTCACCAACGCCAGCTACACCTGT
CCCGGAAGAAAAGCAGTACTCCAAGCCCCATCCTGCAGCAAGAGGCCCTGACGCTCTTCCATGCTGT
GCCATCCACAGAAAACAGGAGCAGAGGAACAGCATCAACTCCAGTTTGAATCGGTCTCCTCGAGT
GCAAACAGCATCCTTAACCTAGCAGCAGCCTGCAGCCCAATCTGAATTCAGCGACTCAAACCTGGATG
TGGTCAAACCTAGTCGGCCAGTTCCTCCCCCGAATCCAAGCCCAACTCACCCCTCTCGCCATCATG
GCCCATGTTCTCGGCACCATCCAGCCCTATGCCACCTCATCCACGTCCAGCGACTCATCCCCATCAGG
TCTGTGGCAGGTTTGTGGTTTTCTGTTGCTGCCGTTGTTCTCTCATTGGCTTGGTCTCTTTCATG
CAGTGTTCAGCCTCCTCGTCAACTTTGTTCCCTGCCATCCAAACCTGCCTTGTCTTTTGCAGGCCAGA
AGAAGCGGTCCGTGAAGACTCCAGCACACCATTCCGGAAGGCAAAGGCTTGTACGCCTGCCAAGCTGAG
CAGACTCGGAGCTCTCCTTACAGCGGGCACCCTTCGATAATGTTTCATCCATCTCAGGAGCCTGGCT
GTTTGGAGGGGACTCTGAATGGAAGACTGGCCTCATCCAGAGAACTACGTGGAATTCCTC

ACGCGTACGCGGCCGCTCGAG - GFP Tag - GTTTAA

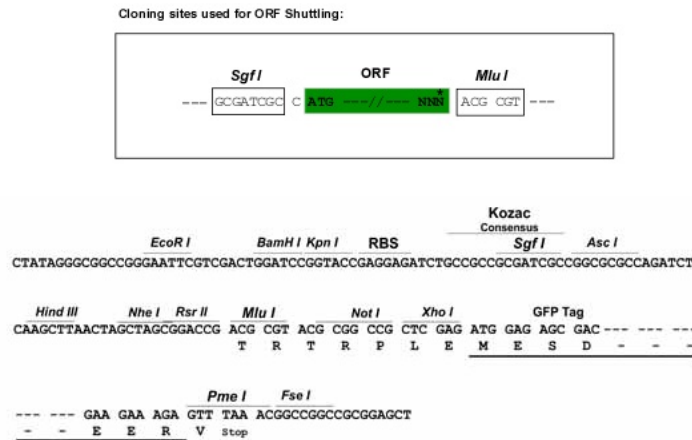
Protein Sequence: >MG215995 representing NM_175164
 Red=Cloning site Green=Tags(s)

MGLPALEFSDCCLDSPHFRETLSHEAELDKTNKFIKELIKDGKSLISALKNLSAKRKFADSLNEFKFQ
 CIGDAETDDEMCIARSLQEFAAVLRNLEDESRMIENASEVLITPLEKFRKEQIGAAREAKKDYKETEK
 YCGTLEKHLNLSKKKESQLQEADSQVDLVRQHFYEVSLEYVFKVQEVQERKMFEFVEPLLAFLQGLFTF
 YHHGYELAKDFGDFKTQLTISIQNTRNRFEGTRSEVESLMKKMKENPLEHKTISPYTMEGYLYVQEKRFH
 GTSWVKHYCTYQRDSKQITMVPFDQKSGGKGGEDSVTLKSCTRRKTDSEIKRFCFDVEAVDRPGVITMQ
 ALSEEDRRLWMEAMDGREPVVNSNRDSQSEGTAQLDSIGFSIIRKCIHAVETRGINEQGLYRIVGVNSRV
 QKLLSVLMDPKAASETETDICAWEIKTVTSALKTYLRMLPGPLMMYQFQRSFIKAAKLENQETRVSEIH
 SLVHRLPEKNRQMLQLLMNHLANVANNHKQNLMTVANLGVVFGPTLLRPQEETVAAIMDIKFQNIIVIEIL
 IENHEKIFNTVPDVPLTNAQLHLSRKSSDSKPPSCSKRPLTLFHAVPSTEKQEQRNSIINSSLESVSSS
 ANSILNSSSSLQPNLSSSDNLDVVKPSRPSLPPNPSPTSPSPSWPMFSAPSSPMPTSTSSDSSPIR
 SVAGFVWFVAAAVVLSLAWSSLHAVFSLLVNFVPCPNLHLLFDRPEEAVREDSSTPFRKAKALYACQAE
 HDSELSTAGTVFDNVHPSQEPGWLEGLNGKTGLIPENYVEFL

TRTRPLE - GFP Tag - V

Restriction Sites: SgfI-MluI

Cloning Scheme:



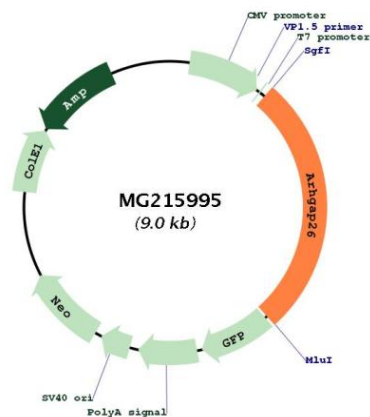
ACCN: NM_175164

ORF Size: 2442 bp

OTI Disclaimer: The molecular sequence of this clone aligns with the gene accession number as a point of reference only. However, individual transcript sequences of the same gene can differ through naturally occurring variations (e.g. polymorphisms), each with its own valid existence. This clone is substantially in agreement with the reference, but a complete review of all prevailing variants is recommended prior to use. [More info](#)

OTI Annotation: This clone was engineered to express the complete ORF with an expression tag. Expression varies depending on the nature of the gene.

Components:	The ORF clone is ion-exchange column purified and shipped in a 2D barcoded Matrix tube containing 10ug of transfection-ready, dried plasmid DNA (reconstitute with 100 ul of water).
Reconstitution Method:	<ol style="list-style-type: none">1. Centrifuge at 5,000xg for 5min.2. Carefully open the tube and add 100ul of sterile water to dissolve the DNA.3. Close the tube and incubate for 10 minutes at room temperature.4. Briefly vortex the tube and then do a quick spin (less than 5000xg) to concentrate the liquid at the bottom.5. Store the suspended plasmid at -20°C. The DNA is stable for at least one year from date of shipping when stored at -20°C.
Note:	Plasmids are not sterile. For experiments where strict sterility is required, filtration with 0.22um filter is required.
RefSeq:	NM_175164.4 , NP_780373.3
RefSeq Size:	7899 bp
RefSeq ORF:	2445 bp
Locus ID:	71302
UniProt ID:	Q6ZQ82
Cytogenetics:	18 B3
Gene Summary:	GTPase-activating protein for RHOA and CDC42.[UniProtKB/Swiss-Prot Function]

Product images:

Circular map for MG215995