

Product datasheet for **MG215993**

Chn1 (NM_029716) Mouse Tagged ORF Clone

Product data:

Product Type:	Expression Plasmids
Product Name:	Chn1 (NM_029716) Mouse Tagged ORF Clone
Tag:	TurboGFP
Symbol:	Chn1
Synonyms:	0610007119Rik; 0710001E19Rik; 1700112L09Rik; 2900046J01Rik; AI413815; ARHGAP2
Mammalian Cell Selection:	Neomycin
Vector:	pCMV6-AC-GFP (PS100010)
E. coli Selection:	Ampicillin (100 ug/mL)
ORF Nucleotide Sequence:	>MG215993 representing NM_029716 Red=Cloning site Blue=ORF Green=Tags(s)

TTTTGTAATACGACTCACTATAGGGCGGCCGGAATTCGTCGACTGGATCCGGTACCGAGGAGATCTGCC
GCC**CGATCGCC**

ATGCCATCCAAGAGTCTTGGTCGGGGAGGAAAGCTAACAGAGCCACAGTCCACAAAGCAAAACCCGAGG
GCCGGCAGCAAGGCTTACTGATAGCAGCCTTGGGAATGAAACTGGGCTCTCAAAGTCATCTGTGACAAT
CTGGCAACCTCTGAAACTCTTTGCTTATTCGCAGTTGACATCACTTGTTAGAAGAGCAACTCTGAAAGAA
AATGAACAAATTCAAAAATGAAAAGGTTCACAATTTCAAGGTGCATACGTTCCGAGGGCCACACTGGT
GTGAATACTGTGCCAACTTCATGTGGGCCTCATTGCTCAGGGAGTGAAATGTGCAGATTGTGGGTGAA
TGTTACAAGCAGTGTTCCAAGATGGTCCCAATGACTGTAAGCCAGATCTGAAGCACGTGAAGAAGGTG
TACAGCTGTGACCTGACAACGCTCGTGAAGCTCACATCACCAAGCGCCAATGGTGGTAGACATGTGCA
TCAGGGAGATCGAGTCCAGAGGTCTTAATTCTGAAGGACTCTACCGAGTGTGAGGATTTAGTGACCTGAT
TGAAGATGTCAAGATGGCTTTTGATAGAGATGGTGAGAAGCGGATATTTCTGTGAACATGTATGAGGAC
ATCAACATTACTGCTGCACTTAAACTGACTTCAGGGATCTGCCAATTCCTCTCATCACATACGATG
CCTACCCCAAGTTCATTGAGTCTGCCAAAATATGGACCCTGACGAGCAATTGGAGACCCCTCACGAAGC
ACTGAGATCGCTGCCGCTGCCACTGCGAGACGCTCCGGTACCTCATGGCGCATCTCAAGAGAGTGACC
CTTCATGAGAAGGAGAATCTGATGAGTGCAGAGAACCTTGGGATCGTGTGGACCAACCCTCATGAGAT
CCCCAGAGCTCGACCCCATGGCCGCTGAACGACATACGCTATCAGAGACTGGTGGTGGAGCTGCTTAT
CAAAAACGAAGACATTTTATT

ACGCGTACGCGGCCGCTCGAG - GFP Tag - GTTTAA



[View online »](#)

Protein Sequence: >MG215993 representing NM_029716
Red=Cloning site Green=Tags(s)

MPSKESWSGRKANRATVHKAKPEGRQQGLLIAALGMKLGSKSSVTIWQPLKLFAYSQLTSLVRRATLKE
 NEQIPKYEKVHNFKVHTFRGPHWCEYCANFMWGLIAQGVKCADCLNVHKQCSKMVPNDCKPDLKHVKKV
 YSCDLTTLVKAHITKRPVVDMCIREIESRGLNSEGLYRVSGFSDLIEDVKMAFDRDGEKADISVNMVED
 INIITGALKLYFRDLPIPLITYDAYPKFIESAKIMDPDEQLETLHEALRSLPPAHCETLRYLMAHLKRVV
 LHEKENLMSAENLGIVFGPTLMRSPELDPMALNDIRYQRLVVELLIKNEDILF

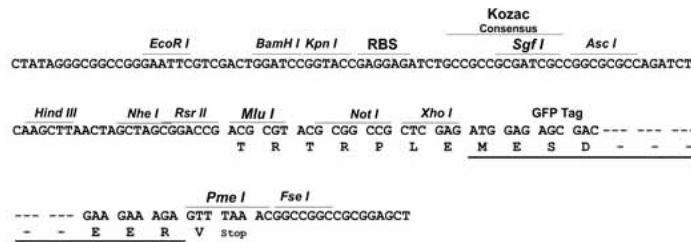
TRTRPLE - GFP Tag - V

Restriction Sites:

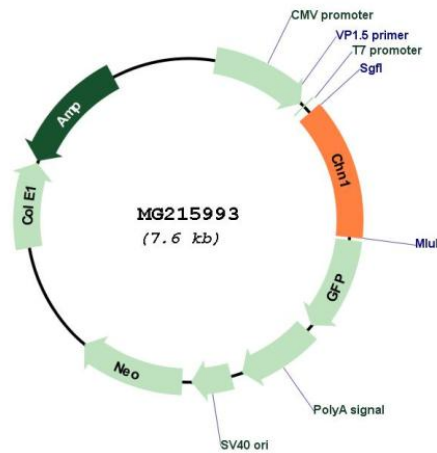
SgfI-MluI

Cloning Scheme:

Cloning sites used for ORF Shuttling:



Plasmid Map:



ACCN: NM_029716

ORF Size: 630 bp

OTI Disclaimer:	The molecular sequence of this clone aligns with the gene accession number as a point of reference only. However, individual transcript sequences of the same gene can differ through naturally occurring variations (e.g. polymorphisms), each with its own valid existence. This clone is substantially in agreement with the reference, but a complete review of all prevailing variants is recommended prior to use. More info
OTI Annotation:	This clone was engineered to express the complete ORF with an expression tag. Expression varies depending on the nature of the gene.
Components:	The ORF clone is ion-exchange column purified and shipped in a 2D barcoded Matrix tube containing 10ug of transfection-ready, dried plasmid DNA (reconstitute with 100 ul of water).
Reconstitution Method:	<ol style="list-style-type: none">1. Centrifuge at 5,000xg for 5min.2. Carefully open the tube and add 100ul of sterile water to dissolve the DNA.3. Close the tube and incubate for 10 minutes at room temperature.4. Briefly vortex the tube and then do a quick spin (less than 5000xg) to concentrate the liquid at the bottom.5. Store the suspended plasmid at -20°C. The DNA is stable for at least one year from date of shipping when stored at -20°C.
RefSeq:	NM_029716.3 , NP_083992.1
RefSeq Size:	3251 bp
RefSeq ORF:	633 bp
Locus ID:	108699
UniProt ID:	Q91V57
Cytogenetics:	2 C3
Gene Summary:	GTPase-activating protein for p21-rac and a phorbol ester receptor. May play an important role in neuronal signal-transduction mechanisms (By similarity). Involved in the assembly of neuronal locomotor circuits as a direct effector of EPHA4 in axon guidance.[UniProtKB/Swiss-Prot Function]