

Product datasheet for **MG215992**

Sox30 (NM_173384) Mouse Tagged ORF Clone

Product data:

Product Type:	Expression Plasmids
Tag:	TurboGFP
Symbol:	Sox30
Mammalian Cell Selection:	Neomycin
Vector:	pCMV6-AC-GFP (PS100010)
E. coli Selection:	Ampicillin (100 ug/mL)



ORF Nucleotide Sequence: >MG215992 representing NM_173384
Red=Cloning site Blue=ORF Green=Tags(s)

TTTTGTAATACGACTCACTATAGGGCGCCGGGAATTCGTGCGACTGGATCCGGTACCGAGGAGATCTGCC
GCCGCGATCGCC

ATGGAGAGAGCCAGGCCGGAGCCACCGCCACCGCCCGCCGCCGCGCCGCAACCGCCGGGCCACCC
CTCCGCGCCCGTTGCGCCCCGCTCCGCCCGCGCAGCCCGTCGAGGCCGCCACCTTCCGGGCCGCGGCCGC
AGAGCGCTCCCAAGTCGCGCTCGGCTCAGGCCACGGCCGCATGGCCCGGTGGCTCGTCTGCGGGGAG
GCCGCGGGCGGGTGCAGCGCCGCGAGGACGCGACGCCCTGCTGCAAGTGAAGCCGGAACAGGTGCTGC
TGCTGCCTCCCGGAGACCGGGGTGCCTCCGGCTCCCGACGAGGGCGCAGCCGCCCGCCGCTGCCGC
TGCCCGCCGCGCCTCGTCCGCGCAGGCGCCCTGCTGCAAGTGAAGCCGGAGCTGCTGCTGTTGCCTCCG
CAGTCCGCGCCGACGGAGGCCCTGCAGGCCGAGCTGCACCCATGCAGCCCGGACGCTGCTCGTCA
AGGCCGAGAAGCAAGAGCTGGGGCGGGCTTGGACCTGTCGGTGGATCTCGGAGGACCACCGAGGCCGG
CCCAGAGCCTCGAGGGCCGCAAGTTGGATGGCACCAGGAAAGCCCTCGACGGCCCGCAAGCGATGAG
AAGAAAAGCCAAAGCTGGAGGCAGAGGAGGCTCCGAGGGATGCCTGAAAGCGGGGAAGGCAAGAGCCTGC
TGGCCATCGGAGAAGGAGTCAAGACGGAGGAGCCAGACAGACCAGGGACGATTGTAGGCTGGGCAC
GGAGGCCACGTCCAATGGCCTGGTCCACAGCAGCAAGGAGGCCATCCTGGCCAGCCGCTAGTGTCTTT
GGGCCACACCAGCAAGACCTAAGTTCCCTTTGACACTCCACCCGTCACCTGGAGCCGATCCAGT
TTCAGGGGCCCTCCGCTTCTGAGTTGATACGGTTGTCCAAAGTCCCCCTGACACCAGTGCCTATTA
GCAGTCTTCTGGAGCCTTCTGAAAAATTGAAACAAAGATGTCCCCCTCACCGTGTGCCCTCAGAT
GCAGGAATACCTGATACTCCCTTTCAGTAAGGACAGAAATGGTATGTGAAGCGACCCATGAATGCATTTA
TGTTTTGGGAAGAATCCACCGCCAGCACTAGCCAAAGCTAACCCAGCCGCAACAATGCAGAAATCAG
TGTCCAGCTCGGGTTAGAGTGGAAACAACTTAGTGAAGAAACAAAAGAAACCTTATTATGATGAAGCAAA
AAGATTAAGAGAAGCAGACAGAGGAGTTTCTGGTTGGGTTTATCAGCCTCGTCCAGGGAAGCGAAAAC
GCTTCCCTCTAAGTGTTCCAATGTATTTCTGGTACCACACAGAATATTATCTCTACAAAATCCTACAAC
AATTTATCCTTATCGCTACCTACCTACTCTGTGTAATCCCGCCCTTCCAGAACCCATCACTCATCCA
GTTGGTGAAGCCCTCCTGCCATCCAGCTGCCACACCTGCAGTCCAGCGCCCAAGTCCCATCACACTTT
TCCAGCCAGCGTCTCCAGCACTGGCCAGTGGCCGTCGCCCTCCAAGCTGACGCCCCGCCCATCACT
CCCACCTCAGCGCTTTTCTGGCCCTCCCAAAGTACATTTCATAGGCTCCCTTCCGGAAGCAGTGCCTCT
GTGAAGAGATCCACTCCAGGCTCTCTGGAGAGCACCACCAGGATCCAGCTGGTGAAGTACTGCCCATG
CCAGATTTGCAACCTCGCCTATCCAGCCTCCTAAGGAGTATGCCAGCGTTTCCACTTGTCCCGAAGCAC
TCCGATACCCCGGCGACTCCCACTCCACACTCACAGTCTATCAGCCCCACCCCTTGGCCATCCAGCC
ACACTGTTTGGGACACCACCTCGTTCTCCTTTTCATCACCTTACTTCTACCTGGACCTCATTACTTCC
CGTCAAGCAGTGCCTTATAGTCGGCCTCCCTTTGGCTATGGAATTTTCAAGTTCAATGCCAGAATG
TCTTGGTTACTATGAAGACAGATACCAAAAACATGAGGCTATCTTTTCAGCTTTAAATAGAGACTATCCT
TTCAGAGACTATCCAGATGAGCACACACAGTGAAGACTCTCGGAGCTGTGAGAGCATGGACGGGCCCC
CTTACTACAGCAGCCATGGCCACGGTGGGAAGAGTACTTGAATGCCATGCCACTCTGGACATTGGAGC
CTTGGAGAATGTCTTACAGCCCCAGCCTCAGCCCCCTCTGGTGTCCAGCAAGTCAATGCTACTGACAGC
GACGAGGAGGAAGAAGAAAAAGTGCTCAGGAATTTA

ACGCGTACGCGGCCGCTCGAG - GFP Tag - GTTTAA

Protein Sequence:

>MG215992 representing NM_173384

Red=Cloning site Green=Tags(s)

```
MERARPEPPPPPPPPRQPPRPTPPRPLRPAPPAQPVEAATFRAAAAERSQSPSAQATAAAMA AVASSCGE
AAAAGAQAAGTRRLQLVKPEQVLLPPGGPGVPPAPDEGAAAAAAAAAASSAQRLLQLRPELLLLPP
QSAADGGPCRPELHPMQPRTLLVKAQKQELGAGLDL SVGSRRTEAGPRASRAAKLDGTGKALDGRSDE
KKAKLEAEEAPRDALKGGEGKSLLAIGEVIKTEEPDRPRDDCRLGTEATSNGLVHSSKEAIIAQPPSAF
GPHQQDLRFPLTLHTVPPGARIQFQPPSELIRL SKVPLTPVPIKMQSLLLEPSVKIETKDVPLTVLPSD
AGIPDTPFSKDRNGHVKRPMAFMVWARIHRPALAKANPAANNAEISVQLGLEWNKLSSEEQKKPYDEAQ
KIKEKHREEFPGWVYQPRPGKRKRFP LSVSNVSGTTQNIISTNPTTIYPYRSTYSVVIPGLQNTITHP
VGEAPPAIQLP TPAVQRPSPITL FQPSVSTGPVAVPPPSLTPRPSLPPQRFSGPSQTDIHRPSGSSRS
VKRSTPGSLESTTRIPAGASTAHARFATSPIQPPKEYASVSTCPRSTPIPPATPIPHSHVYQPPPLGHPA
TLFGTPPRFSFHHPYFLPGPHYFSSSTCPYSRPPFGYGNFSSMPECLGYEDRYQKHEAIF SALNRDYP
FRDYPDEHTHSEDSRSCESMDGPPYSSHGHGGE EYLNAMPTLDIGALENVFTAPASAPSGVQVNVTDSD
DEEEEEKVLRLNL
```

TRTRPLE - GFP Tag - V

Chromatograms:

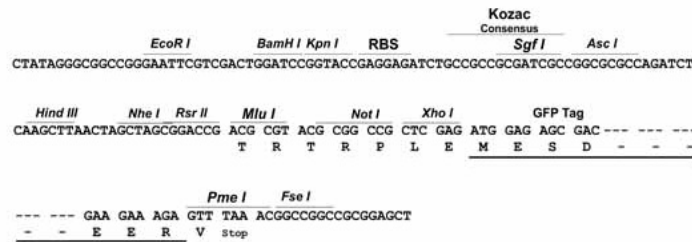
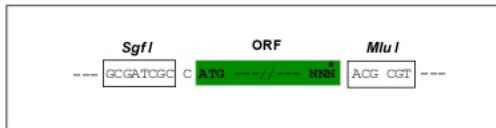
https://cdn.origene.com/chromatograms/ja2223_a08.zip

Restriction Sites:

SgfI-MluI

Cloning Scheme:

Cloning sites used for ORF Shuttling:



ACCN:

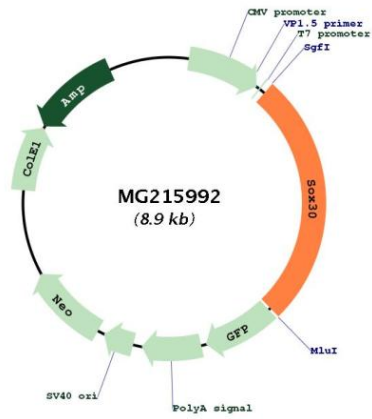
NM_173384

ORF Size:

2346 bp

OTI Disclaimer:	<p>Due to the inherent nature of this plasmid, standard methods to replicate additional amounts of DNA in E. coli are highly likely to result in mutations and/or rearrangements. Therefore, OriGene does not guarantee the capability to replicate this plasmid DNA. Additional amounts of DNA can be purchased from OriGene with batch-specific, full-sequence verification at a reduced cost. Please contact our customer care team at custsupport@origene.com or by calling 301.340.3188 option 3 for pricing and delivery.</p> <p>The molecular sequence of this clone aligns with the gene accession number as a point of reference only. However, individual transcript sequences of the same gene can differ through naturally occurring variations (e.g. polymorphisms), each with its own valid existence. This clone is substantially in agreement with the reference, but a complete review of all prevailing variants is recommended prior to use. More info</p>
OTI Annotation:	<p>This clone was engineered to express the complete ORF with an expression tag. Expression varies depending on the nature of the gene.</p>
Components:	<p>The ORF clone is ion-exchange column purified and shipped in a 2D barcoded Matrix tube containing 10ug of transfection-ready, dried plasmid DNA (reconstitute with 100 ul of water).</p>
Reconstitution Method:	<ol style="list-style-type: none">1. Centrifuge at 5,000xg for 5min.2. Carefully open the tube and add 100ul of sterile water to dissolve the DNA.3. Close the tube and incubate for 10 minutes at room temperature.4. Briefly vortex the tube and then do a quick spin (less than 5000xg) to concentrate the liquid at the bottom.5. Store the suspended plasmid at -20°C. The DNA is stable for at least one year from date of shipping when stored at -20°C.
Note:	<p>Plasmids are not sterile. For experiments where strict sterility is required, filtration with 0.22um filter is required.</p>
RefSeq:	<p>NM_173384.2, NP_775560.1</p>
RefSeq Size:	<p>2995 bp</p>
RefSeq ORF:	<p>2349 bp</p>
Locus ID:	<p>214105</p>
UniProt ID:	<p>Q8CGW4</p>
Cytogenetics:	<p>11 27.49 cM</p>
Gene Summary:	<p>Transcriptional activator. Binds to the DNA sequence 5'-ACAAT-3' and shows a preference for guanine residues surrounding this core motif (By similarity).[UniProtKB/Swiss-Prot Function]</p>

Product images:



Circular map for MG215992