

Product datasheet for **MG215989**

Tnrc6b (NM_177124) Mouse Tagged ORF Clone

Product data:

Product Type:	Expression Plasmids
Tag:	TurboGFP
Symbol:	Tnrc6b
Synonyms:	2700090M07Rik; A730065C02Rik; AI848765; D230019K20Rik
Mammalian Cell Selection:	Neomycin
Vector:	pCMV6-AC-GFP (PS100010)
E. coli Selection:	Ampicillin (100 ug/mL)

ORF Nucleotide Sequence: >MG215989 representing NM_177124
Red=Cloning site Blue=ORF Green=Tags(s)

TTTTGTAATACGACTACTATAGGGCGCCGGGAATTCGTCGACTGGATCCGGTACCGAGGAGATCTGCC
GCCGCGATCGCC

ATGAGAGAGAAGGAGCAAGAAAGGGAAGAAGCAAGTAAATGGAAGACAAGAAAAGGAAGAAAGAGGATAAAA
AGAAAAAAGAACCCAGCCAGAAAGTACCGGAACAAAAACCAAGTGCCTGAGTGCAGAAACCAAGTTT
AAGCCAACCAACGGCCCGCCAGCCCAATTGGCAGCTCTCCATCGCCACCAGTCAATGGTGGCAACAATGCC
AAAAGGGTGGCAGTGCAGAACGGACAACCGCAAGCGCCGCCCGCTACATGCCCTCGGGAGGTGCCACCGC
GATTCGGTTGCCAGCAGGACCATAAAGTGTACTAAAACGTGGGCAGCCCTCCACCGTCCTGCATGCT
CCTCGGGGTGGGGCGGGCCTCCTCCCTGCACAGCACCTGGAGCAAACCCCAACAACAACGCACAAGT
ACAGGAGCGCTGCTGCAGAGTGCAGAGTGGGACTGCACCAGAGTCAACCCTTGGAGGTGCTGCTGCTCAA
ATTATGCAAATCCACTTGGGGCCCGGAGCCTCCTCAACAGCGGCCTCCCCAACCAATTCACAT
CTGGGACAAGGTGATTGTAGACGGGTCTGACATGGAAGAGTGGCCTTGTATTGCCAGCAAAGACACTGAA
TCTTCTCCGAAAACACCACCGATAACAACAGTGCCTCGAACCTGGCTCTGAGAAGAGCAGTCTGCCAG
GAAGCACCCTAGTAACAAGGCAAGGGAGCCAAATGCCAGGCTGCAAGTTCTGGGAACGAATGTAATCT
TGGGGTCTGGAAATCTGACCCCAAGGCTAAGTCTGTTCAACCTCCCAACTCTACTTCAGATAGCAACAAT
GGACTAGGAACTGGAGGAGCACGAGTGGTCAAGATAGAATTGGACCTGGCTCTGGCTTCAGCAACTTTA
ACCCAAATAGCAACCCATCTGCTGGCCAGCATTGGTCCAAGAAGGGACTTCTAGAAAAGGGCATTGGA
AACAGAAAGTAGTGTCCAGTGCACAAGTTAGCACAGTAGGTGAGGATCCAGGGAACAGCAGTCAAAG
ATGGAAAATGCGGGTGTAAATTTTGTGTCTCTGGCAGAGAACAGGCTCAAATTCATAACACTGATGGAC
CAAAAAATGGAAACACTAACTCCTTGAACCTAAGTTCACCAACCCCATGGAAAATAAGGGAATGCCCTT
TGGAATGGGCTTGGGGAACACCTCCAGGAGCACTGATGCCCTTCAAAAAGCACTGGAGATCGAAAAGACT
GGGAGTGTGGGTCTTGGGGTGCAGCTAGGGGGCCTTCTGAACTGACACAGTCTCTGGACAAGCAATT
CTGGAATAATGGGAACAATGGAAAAGACAGAGGACTCCTGGAAGGAGCTTCTGTTCCAAAACCAAC
TGGGTCAAAAAGTGAATCTTGGGACAACAATAACAGGTCTACGGGTGGTCCCTGGAACCTTGGCCCTCAG
GACAATAATGACAACAATGGGGTGAAGGGAACAAAATGACATCTGGGTCTCTCAGGGAGAATGGAAC



AGCCGACTGGGTCTGATGAGTTGAAAAATTGGAGAATGGAGTGGTCCAAACCAACCAAAATTCTAGCACTGG
AGCATGGGACAATCAAAGGGCCACCCCTCCCTGAAAACCAAGGCAATGCCAGGCTCCCTGTTGGGGA
AGATCTCCAGCTCCGACGGAAGTGAAGTTGGAGGTCAAAGCACTGGAAGCAACCACAAAGCAGGAAGTA
GTGACAGTCATAAATTCTGGTCGTCGATATAGGCCACGCACTCTGATTGCCAGGCTGCTTGCAGAC
TCTTTTGAGCCGGACTGATTTGGACCTAGGGTCTCTCAAACACTGGCTGGGGCCAAACTCAAATTAAG
CAGGACACAGTGTGGGATATTGAAGAGGTGCCAAGGCCTGAGGGGAAATCTGACAAAGGAACTGAGGGGT
GGGAGAGCGCTGCCACACAGACCAAGAACTCAGGGGGTGGGAGATGCACCCAGCCAAAGCAATCAAAT
GAAGTCTGGATGGGGGAGCTCTCAGCCTCGACAGAGTGGAAAAGCCCAAGAGCACAGGAGGCTGGAAT
GACTATAAGAAACAACAACCTCTTAACCTGGGGAGGAGCCGAGCAGATGAAAAGACACCTTCTCTTGGGA
ATGAGAGTCTTGTAAAGGATCAGGGGTGGGAGGTGGGCGCAACCCAACCAAGGATGGACTTCTGGGAA
GAATGGTTGGGGCAGGAGGTGGATCAAGTGAATAATAATTGGGAAAGTTCTGCCAATAAGCCTGTG
TCTGGGTGGGGTGAAGGAGGACAGAATGAAATGGAACTGGGGTAAATGGTGGGAAACAAAACCTAGCAT
CAAAGGTGGGTGGGAAGATTGCAAAAGATCCCTGCATGGAATGAGACAGGCAGACAGCCAAATTCCTG
GAATAAACACACCAACAGCAGCAGCAGCCACCCACCACAGCCAGAGGCTTCTGGTTCATGGGAGGC
CCACCCCGCCACCTCAAGGCAATGTTGACCTTCTAATCCAACGGAGCAGTGGACCCAGCCTACAA
CCCTAAGGATGATGAACCCAGTGGTTGGGAGGAGCCATCCCCACAGTCAATTAGTCGGAATAATGGACAT
TGATGATGGCACTTCAGCTTGGGGAGACCTAACAGTTATAACTACAAGAATGTGAACCTTTGGGATAAG
AATTCTCAGGGGGCCAGCACCTCGAAGAACAACTGCCTACCCCAATGACCGGAAATCAGCATCAG
TCTGGAGCAAAAGCACACCCTGCTCCAGATAATGGACTTCAGCCTGGGGTGAAGCAAAATGAAAGCAG
TCTGGGTGGGGTGAATGGATGATGCAGGAGCATCAACCACAGGCTGGGAAACACACCTGCCAACGCCT
CCCAATGCCATGAAACCAATTCAAAATCTATGCAAGACGGCTGGGGGAGAGTGACGGACCACTCACAG
GAGCTCGCATCCTAGCTGGGAAGAGGAGGATGACGGAGGAGTCTGGAACACCGCCGCTCTCAGGGAAG
CACTTCTCCACAACCTCAGCAAGTGGGGACAAGGAGGAAAGAAACAATGAAGTGTCTACTAAAAGGA
GGAAACAATGATTGATGATGATGATGATGATGATGATGATGATGATGATGATGATGATGATGATGATGAT
AGGATAACCAAGCAGCAAAATGGATTGTCTGTAGATAAGAAATTTGATGTGGACAAGAGAACAATGAA
TCTCGGGGATTTAATGATATCATGAGGAAGGATCGACCTGGGTCCGTCACCTAATTCAAAAGACTTG
GGAACACAGACAGTGGCCTATTTTGAAGGGCGCAGTCAATGGTTGTTTGGAAACAGCACAGCAC
AATCGAGAGGCCTGCACACTCAGTGCAGCCACTAAGTTCTTCTCCTGGTCTCCGGGGCAAGTGCCTCC
CCAGTTTATCTCCCCCAGTTTCTGCCTCAATGCTCAAGCAGTTCACCAACAGTGGCCTGAATCCAGGT
CTCTTAAATGTGGGGCCAGCTATCTCCTCAACAGATTGCCATGCTGAGCCAGCTTCCACAGATACCC
AGTTTCAGTTGGCATGTCAGCTTCTCCTGCAGCAGCAGCAGCAACAGCAGCAGTGTACAGAACCAGAG
AAAGATTTCTCAAGCAGTGCAGCAGCAGCAAGAACAGCAGCTGGCAAGAATGGTGAAGTGTCTCCAGCAG
CAGCAACAGCAGCAGCAGCAGCAGCAGAGGCGCTAGCATGAAGCATTACCTTCTCATCTGTTGGGC
CTAAGCCACATTTGGACAACATGGTACCAATGCCTGAATGTGGGGCTCCAGACCTTCCAACCAAGG
GCCAATCTCGGATATGGTTCTGGCTTCACTTGGTGGCATGGACTATGGTATGGTGGTGGCAAGGAG
GCTGGGACCGAGTCTCGTTCAAAACAGTGGACCTCAATGATGGAAGGGTCCCATCTGTGGCCACACAG
AAGCCACATGCACAAAACGGCGCTATAGTGGCCCTGGTAAAGCCCGAGGAGTTACCATAACAACCA
GTTTGATATAATCCAGGTGACACACTGGGTGGCCATACGGGTCTGCTGGTATAGCTGGTTACCTGCC
AAATCTCCACCGACTAATAAATCGGAAGTAAATCCAGCAATGCCAGTTGGCCTCCAGAATTCACCCAG
GAGTGGCATGGAAAGGTATCCAAAATATTGACCTGAATCTGACCCCTATGTACCCCAAGGAAGTGTGCT
AGGGGGTACAACCATCTCCATTGTAGATACTGACCACCAACTGCTGCGGGATAACACCACAGGGTCT
AATTCCTCCCTCAACACCTCGCTGCCTTCACTGGTGCCTGGCCCTACAGTGCCTCTGACAACCTCTTTA
CCAACGTTTCATAGCACTTCAGCAAAGTTCCTGATTATAAATCCACGTGGTCCCAGATCCCATAGGACA
CAACCCCACTCATCTCCTCAATAAGATGTGAAAAATCACATCTCCTCCAGGAACACTACACCGCTGACC
CGCCCACTCTGGCCTGACCAACCCAAACCGGCATCTCCTTGGAGCAGCACAGCACCGCGATCGGTCA
GGGGGTGGGGGACACAGGACTCCCGATTGCCTCGGCCTACCTGGAGTATGGTGGCTCTGTCCGTCC
TAGTTACTGGCTGGTTCTCCACAATCTACCCACAGATTGATGGGTCAACCTGAGAACGATCTGCATG
CAGCATGGCCCACTGCTGACATTCCATCTGAACCTAACCCAGGGCACTGCCCTGATCCGATACAGACCA
AAACAGAGGCAAGGCAAGGCCCAGACTGCACTGCACATGTGTGTGGTGGGAAACTACCATCTGGCCGA
GTTTGGCACTGAGGATGAAGTCAAGCAGTTCCTGGCTCAAGCTCAGCCCTACGCCTGCAGCCACCCCG
AGTGCACCTGCCACAGGTGGCAGTCCCTGGAGACCAGCCAGAACAAGCAGACCCCGTTGGACCTGGCG
TGAACCTTTTGGTGGGTCCACCGGGCTCGGGCAGTGGAGCAGCAGCGCTGGTGGCAGCAGTGGGGCCGA
TCTTGGCCGCACTTCTTGTGGGGCCCCCAAATATTCTTCTAGCTTGTGGGGAGTCCCGACGGTGGAA
GATCCCATAGGATGGGAGCCCTGCTCTTTACTACCTGGTACCTTCTGGGAGGAGGTGGATTCAA
TC

ACGCGTACGCGGCCGCTCGAG - GFP Tag - GTTTAA

Protein Sequence:

>MG215989 representing NM_177124
 Red=Cloning site Green=Tags(s)

MREKEQEREEQLMEDKKRKKEDKKEATQKVTEQTKVPEVTKPSLSQPTAASPIGSSPPVNGGNNNA
 KRVAVPNGQPSSAARYMPREVPPRFRCQQDHKVLKRGQPPPPSCMLLGGGAGPPPCTAPGANPNNAQV
 TGALLQSESGTAPESTLGGAAASNYANSTWPGASSNSGASPNPIHIWDKVIIVDGSMDMEWPICIAASKDTE
 SSENTTDNNSASNPGEKSSLPSTTSNKGKGSQCQAASSGNECNLGVWKSDFKAKSVQPPNSTSDSNN
 GLGNWRSTSGQDRIGPGSGFSNFPNPNPSAWPALVQEGTSRKGALETESSSSAQVSTVQGASREQQSK
 MENAGVNFVVSGREQAQIHNTDGPKNGNNTSLNLSSPNMENKGMPPFGMLGNTSRSTDAPSQSTGDRKT
 GSVGSWGAARGPSGTDVTSVGSNSGNGNNGKDREDSWKGASVPKPTGSKSDSDWNNRSTGGSWNFGPQ
 DNNDNKWGEENKMTSGVSQGEWKQPTGSDELKIGEWSPNQPNSSGTAWDNQKGHPLPENQNAQAPCWG
 RSSSSAGSEVGGQSTGSNHKAGSSDSHNSGRRSYRPTHPCQAVLQTLLSRTDLDPRLVNTGWGQTQIK
 QDTVWDIEEVPRPEGKSDKGTGWEASAATQTKNSGGWDAPSQSNQMKSGWELASSTEWKDPKSTGGWN
 DYKNNSNWSGGRADEKTPSSWNESSCKDQGWGGGRPNQGWTSKNGWEEVDQVKNNNWESSANKPV
 SGWEGEGQNEIGTWNGGNTNLASKGWEDCKRSPAWNETGRQPNWNKQHQQQQPPPPQPEASGSWG
 PPPPPQGNVPSNSNWSGQPPTPKDDEPSGWEEPSQSI SRKMDIDDGTSAWDPNSYNYKNVNLWDK
 NSQGGPAPREPPLPTMTGKSASVWSKSTPPAPDNGTSAWGEPNESSPGWGEMDDAGASTTGWGNTPANA
 PNAMKPNKSMQDGWGESDGPVTGARHPSEEEEDGGVWNTAGSQGSTSSHNSASWGGQGGKQMKCSLKG
 GNDSWMNPLAKQFSNMGLLSQTEDNPSKMDLSVDKFKFDVDRKTMNLGDFNDIMRDRPGRFRPPNSKDL
 GTTDSGPYFEKGGSHLFGNSTAQSRGLHTPVQPLSSPGLRAQVPPQFISPVQVSAMLKQFPNSGLNPG
 LFNVPQLSPQIAMLSQLPQIPQFLACQLLQQQQQQQLLQNRKISQAVRQQEQQLARMVSALQQ
 QQQQQQQRQPSMKHSPSHVGPKPHLDNMVFNALNVGLPDLPTKGPPIPGYSGSFGSSGMDYGMVGGKE
 AGTESRFKQWTSMEGLPSVATQEATMHNKGAIVAPGKTRGGSPYNQFDIIPGDTLGGHTGPAGDSWLP
 KSPPTNKIGKSSNASWPPEFQPGVPWKGIQNIDPESDPYVTPGSVLGGTTTSPIVDTHQLLRDNTGS
 NSSLNTSLSPGAWPYSASDNSFTNVHSTSAKFPDYKSTWSPDPIGHNP THLSNKMWNHIISSRNTPLT
 RPPPGLTNPKPASWSSSTAPRSVRGWTQDSRIASASTWSDGGSVRSYWLVLHNLTPQIDGSTLRITCM
 QHGPLLTFHLNLTQGTALIRYSTKQEAQAQTALHMCVLGNTTILAEFATEDEVSFRFLAQAPPTPAATP
 SAPATGWQSLQTSQNPADVPVGPALNLFGGSTGLGQWSSSAGSSGADLAGTSLWGPPNYSSSLWGVPTVE
 DPHRMGSPAPLLPGDLLGGSDSI

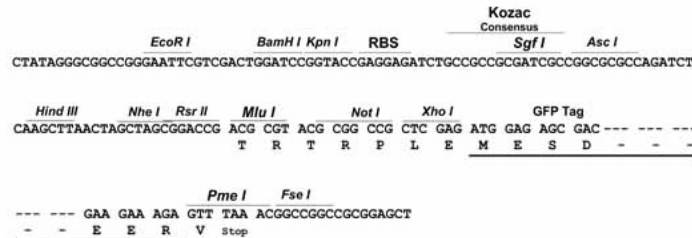
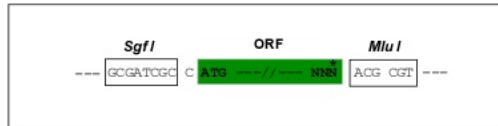
TRTRPLE - GFP Tag - V

Restriction Sites:

SgfI-MluI

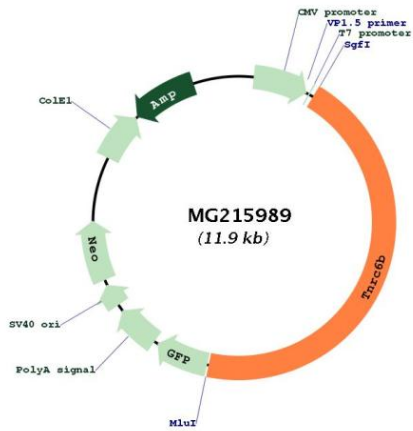
Cloning Scheme:

Cloning sites used for ORF Shutting:



ACCN:	NM_177124
ORF Size:	5322 bp
OTI Disclaimer:	The molecular sequence of this clone aligns with the gene accession number as a point of reference only. However, individual transcript sequences of the same gene can differ through naturally occurring variations (e.g. polymorphisms), each with its own valid existence. This clone is substantially in agreement with the reference, but a complete review of all prevailing variants is recommended prior to use. More info
OTI Annotation:	This clone was engineered to express the complete ORF with an expression tag. Expression varies depending on the nature of the gene.
Components:	The ORF clone is ion-exchange column purified and shipped in a 2D barcoded Matrix tube containing 10ug of transfection-ready, dried plasmid DNA (reconstitute with 100 ul of water).
Reconstitution Method:	<ol style="list-style-type: none">1. Centrifuge at 5,000xg for 5min.2. Carefully open the tube and add 100ul of sterile water to dissolve the DNA.3. Close the tube and incubate for 10 minutes at room temperature.4. Briefly vortex the tube and then do a quick spin (less than 5000xg) to concentrate the liquid at the bottom.5. Store the suspended plasmid at -20°C. The DNA is stable for at least one year from date of shipping when stored at -20°C.
Note:	Plasmids are not sterile. For experiments where strict sterility is required, filtration with 0.22um filter is required.
RefSeq:	NM_177124.4 , NP_796098.3
RefSeq Size:	17125 bp
RefSeq ORF:	5325 bp
Locus ID:	213988
Cytogenetics:	15 E1
Gene Summary:	Plays a role in RNA-mediated gene silencing by both micro-RNAs (miRNAs) and short interfering RNAs (siRNAs). Required for miRNA-dependent translational repression and siRNA-dependent endonucleolytic cleavage of complementary mRNAs by argonaute family proteins. As scaffolding protein associates with argonaute proteins bound to partially complementary mRNAs and simultaneously can recruit CCR4-NOT and PAN deadenylase complexes (By similarity). [UniProtKB/Swiss-Prot Function]

Product images:



Circular map for MG215989