

Product datasheet for **MG215979**

Slfn5 (NM_183201) Mouse Tagged ORF Clone

Product data:

Product Type:	Expression Plasmids
Product Name:	Slfn5 (NM_183201) Mouse Tagged ORF Clone
Tag:	TurboGFP
Symbol:	Slfn5
Synonyms:	AI956840
Mammalian Cell Selection:	Neomycin
Vector:	pCMV6-AC-GFP (PS100010)
E. coli Selection:	Ampicillin (100 ug/mL)



[View online »](#)

ORF Nucleotide
Sequence:

>MG215979 representing NM_183201
 Red=Cloning site Blue=ORF Green=Tags(s)

TTTTGTAATACGACTCACTATAGGGCGGCCGGAATTCGTGACTGGATCCGGTACCGAGGAGATCTGCC
 GCCCGCATCGCC

ATGAGTTTCCTGGAGATTGGAACTGAACTTTCGCGAATGTATACAAGATGGAGGAAAAGCGACCTTG
 GGGTTAGGCAAAGGGAGGAAATGGATACACACACTGCATGAAACAGAACGAAATCATCTCGCAAGCCGT
 GTGCGCTCTGCTGAATCCGGTGGCGGAGTGGTCAGGGTTGAGATTGAGAACGGAGACTATAATTTTGAG
 AGGGATGGAGTTGGCTTGAATCTGCCACCATTGTTGAGAAACATTTAGACGAGATGCTGTATGGAAAGC
 TCTTTTAAATATGTGAGTTCGTGGGACGTGGCAGCCTCTCACGTGAGGCTCGTACCCTGTGCTCCAA
 TTTGTACCACAGATGTGGAACATTTACTGAGGTGATGGATCCTGAAAAAGCCCTGAAATTCCTCAAAAGG
 GTCCAGGATCCTAGGATCTTGGTACTCTGACTCGTAAATCTACAGGAAGCTCCTGTAGATGACGCTC
 AGATGATCTTAGCTTCTGATTTGTTTCATAGCCCGCAGCTCCAGTACCTGAAAAACTCACTTCACAAA
 GTCCTCACACGTTGAATTTCAAATGTTCTCGGCAGACCTTCCCAGGGCATTAGAGAGAGACTTCCAAG
 TGTGTTTCTGCACTTGCCAAATCTGAAGGGGGCTATGTGTTTTTGGTGTGCATGATGAGACCCGTCATG
 TCATTGGATGTGAAAAGGAAAAGATAAATTGTACCAACTTGAAATCTACTATCGATGCCTGTATCAGGAA
 GATGCCTGTCTACCATTCTGTGGACAAAACCACAAAGTGCAATATGAGCTTAAATTCCTTGAAGTGTAT
 GATAAGGAGGCCCTCCATGGGTATGTCTGTGCAATCAAGGTGCAACGATTCTGCTGTGCAGCATTGGCCA
 AAGCGCCCGATTCTGGGAGATAAAGGACAATAAAGAAGCCGCTAACTGCGAATGACTGGGCCTCTCG
 GATGATAGAAATCAACCCAGACCTTCCAGTTCCCTCAGATGATCCCTGGAAGAGTATGTTAAACACC
 ACACCCGTCAGCAAGACCGTGTTCACACATAAATTTGAAATGTGTGGAAGACCTTCGAGAGGATTACT
 TTCCAGTGCACCAACAGGATTACATATACTCCAGAGAGCGTCTACAAGGACCTTTCGAGACTCAG
 AGGACTAAGAAACTTAATAAATATGGAATGCGCTGTTTCTCTCAAGGGATATTGATCTTCTCCACAGC
 TGGGCTGTAGATCTAGGTCTTCCAGAGGAGCAAGATGTCATCTGTGACGCTCTTCTGATTTCCCGAACA
 ACGTTCCAATCTGTACACCATTGCAACAAGTGGGATCTGGGGAACAGGCACTATTCCATGAAAGTTGC
 CCGTACCCTGAAGCAGAAGCTGGTGAACATGGGTGGCTACCCTGGAAGATTAGGCATCATTCCCTTGGTC
 TTACCACTGGGTTCTACCAAAGAGTAAGGAATGACTTAGAAATGCCAGTGTACCCCGAATCCTATAACT
 TCATAACCACACAGCAGGTGGAAGCTCTGTTGCAATCTCTGTGATCATCTTGTGGGTTCCAGACCCCT
 GTTAAATGAAGAGTTAACTTGGAGTCTGAGACTGTGGCCCTGCTCTCAGACCAACAGTACGGGTTGCTT
 TCAACTAACCTGAGCAAGCACAGAGAGATGTTTGTTCACGGCTTACCTGGATCAGGGAAGACCCTAG
 CTCTCATGATCGTGGGAAGATCAGGAATGTGTTCAACTGTCAAGCTGACAACATTCTTTACATCTGTGA
 GAACCACTCTTGAAGAGGTTTATTGTGAGGAAAAACGTTTGCCAGGCAGTGACACGGAAAACTTCATG
 AAAAAACCTTTGATAATGTGCAACATATCATCGTGGACGAAGCTCAGAAATTTCCGAACGGAGGACGGGA
 ACTGGTACGCAAAGGCCAAAGCCATCACTCAGAGAGCGAGAGATGGCCCAGGAGTTCTCTACATTTTCT
 GGATTACTTTTCTAGATCAATCACTTGTGTGAGTGGCCTCCCTGAGCTCCAACACCAGAAGCCGTTATTG
 AAGCTCACCAGAAATGCTCCGACGCGGAGACAACATAACCAGCTACCTTCCAGGATAAATGCATCAAAATCA
 GAGAAAACTCTCCCAAATGTCCCAAGAAGCCTTGATGGTGGTGAAGAATTGAATGGGTTCCAGA
 TGTACAGGCACTTAGAGATTACTGATAACTTGAATTTGGAGCAGATGTCAGTCTATGTAGCAGAGAAA
 TGCCAGAGTCTTTGGAGGTCTGGCTATTTACGGATGTTGCTGTTCTTTTCACTAGAGCCAGAGATATAG
 AAAAAATGTAGAGACAAGCTTCTGTAGCAATGAGGAGGAGGTCCATGTCTCAGCTCGCTGAGGAGCCAG
 TTTACTAGTGCAGGTGAGGAGGGGTTGGATAGTCTGGGTAGTACGTCGTGTTGGAGAGTGTCCACCGA
 TTTTCAGGCATGGAAAGAAGTATTGTGTTGGGATCATTCCAATGGGATCTGAGACGGCCATTTTCTACA
 ATGCTCTGCTCTGCTGGCTTCCAGGGCAAGGACACATCTGTATATTGTAAGGTTGTGTTT

ACGGTACGCGGCCGCTCGAG – GFP Tag – GTTTAA

Protein Sequence: >MG215979 representing NM_183201
 Red=Cloning site Green=Tags(s)

MSFLEDLELNFAECIQDGGKATLGVRQREEMDTTHCMKQNEIISQAVCALLNSGGGVVVEIENGDYNFE
 RDGVGLNLPPLFRNHLDEMLYGLKFLIYVSSWDVAASHVRLATLCSNL YHRCGTFTEVMDPEKALKFLKR
 VQDPRI LGSDSLNLQEAPVDDAQMILASDLFHSPLQYLEKLNFTKSSHVEFQMF SADLSQGIRERLPK
 CVSALANSEGGYVFFGVHDETRHVI GCEKEKINCTNLKSTIDACIRKMPVYHF CGQNHKVQYELKFLEVY
 DKEALHG YVCAIKVERFCCA AFAPDSWEIKDNNKPLTANDWASRMIEINPDLSSFPQMIPWKSMLNT
 TPCSKTVFTHKYLKCVEDLQKDYFPVSPNRITYTPESVYKDLFADYRGLRNLINMEMRCFSQGILIFSHS
 WAVDLGLQRRQDVICDALLISPNNVPILY TICNKWDLGNRHYSMKVARTLKQKLVNMGYPGRLGIPLV
 LPLGSHQVRNDLEMPVY P ESYNFITTQQVEALLQSLV IILFGFRPLLNEELNLESETVALLSDQQYGLL
 STNLSKHREMFVHGLPGSGKTTLALMIVGKIRNVFNCA DNILYICENQSLKRFIVRKNVCQAVTRKTFM
 KNTFDNVQHIIVDEAQNFRTE DGNWYAKAKAITQRARDGPGVLYIFLDYFQINHLCCSGLPELQHQP
 LLLTRMLRSGDNITSYLQDIMHQIRENPPPNVPQEALMVGEELWGP DVTGNLEITDNLNLEQMSVYVAEK
 CQSLWRSYFTDVAVLFTRARDIEKCRDKLLLAMRRRSMSQLAEEPSLLVQVREGLDSL GSHVVLESVHR
 FSGMERSIVFGIIPMGETAIFYNALLCLASRARTHLYIVKVVF

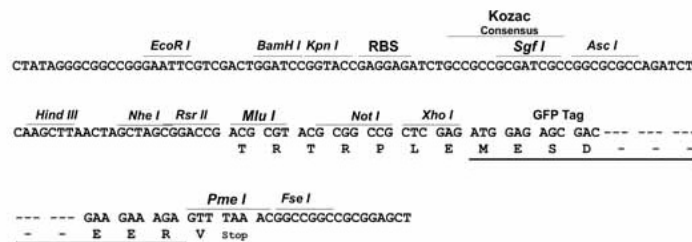
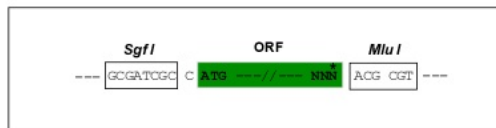
TRTRPLE - GFP Tag - V

Restriction Sites:

Sgfl-MluI

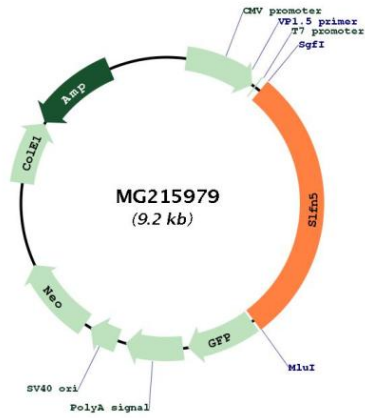
Cloning Scheme:

Cloning sites used for ORF Shuttling:



ACCN:	NM_183201
ORF Size:	2652 bp
OTI Disclaimer:	<p>Due to the inherent nature of this plasmid, standard methods to replicate additional amounts of DNA in E. coli are highly likely to result in mutations and/or rearrangements. Therefore, OriGene does not guarantee the capability to replicate this plasmid DNA. Additional amounts of DNA can be purchased from OriGene with batch-specific, full-sequence verification at a reduced cost. Please contact our customer care team at custsupport@origene.com or by calling 301.340.3188 option 3 for pricing and delivery.</p> <p>The molecular sequence of this clone aligns with the gene accession number as a point of reference only. However, individual transcript sequences of the same gene can differ through naturally occurring variations (e.g. polymorphisms), each with its own valid existence. This clone is substantially in agreement with the reference, but a complete review of all prevailing variants is recommended prior to use. More info</p>
OTI Annotation:	This clone was engineered to express the complete ORF with an expression tag. Expression varies depending on the nature of the gene.
Components:	The ORF clone is ion-exchange column purified and shipped in a 2D barcoded Matrix tube containing 10ug of transfection-ready, dried plasmid DNA (reconstitute with 100 ul of water).
Reconstitution Method:	<ol style="list-style-type: none"> 1. Centrifuge at 5,000xg for 5min. 2. Carefully open the tube and add 100ul of sterile water to dissolve the DNA. 3. Close the tube and incubate for 10 minutes at room temperature. 4. Briefly vortex the tube and then do a quick spin (less than 5000xg) to concentrate the liquid at the bottom. 5. Store the suspended plasmid at -20°C. The DNA is stable for at least one year from date of shipping when stored at -20°C.
RefSeq:	<u>NM_183201.4</u> , <u>NP_899024.3</u>
RefSeq Size:	5989 bp
RefSeq ORF:	2655 bp
Locus ID:	327978
UniProt ID:	<u>Q8CBA2</u>
Cytogenetics:	11 C
Gene Summary:	May have a role in hematopoietic cell differentiation.[UniProtKB/Swiss-Prot Function]

Product images:



Circular map for MG215979