

## Product datasheet for **MG215978**

### **Gprc5c (NM\_147217) Mouse Tagged ORF Clone**

#### **Product data:**

Product Type:	Expression Plasmids
Product Name:	Gprc5c (NM_147217) Mouse Tagged ORF Clone
Tag:	TurboGFP
Symbol:	Gprc5c
Synonyms:	1110028I06Rik; 3200002M13Rik; Raig3
Mammalian Cell Selection:	Neomycin
Vector:	pCMV6-AC-GFP (PS100010)
E. coli Selection:	Ampicillin (100 ug/mL)



[View online »](#)

**ORF Nucleotide Sequence:**

>MG215978 representing NM\_147217, **codon optimized**.  
**Due to the complexity of NM\_147217, the ORF clone is codon optimized for mammalian Expression.**  
**The nucleotide sequence differs from the reference sequence, yet the amino acid sequence remains identical.**

Red=Cloning site Blue=ORF Green=Tags(s)

TTTTGTAATACGACTCACTATAGGGCGCCGGGAATTCGTCGACTGGATCCGGTACCGAGGAGATCTGCC  
 GCC**GCGATCGC**C

ATGGCCACTCACAGAACCTTGCTGATGTGCTAGGACTGCCTCTTCTTCCCAGGAGCCTTGGCCAGA  
 ATCATGCCCCACCTGGTTCAGCCAGATCTGGATCCCCTCTACTACAACCTCTGTGACCCTCGGGGC  
 CTGGGCATTGTCTGGAGGCAGTGGCTGGAGCAGGCATCATCAGACATTTGTGTTAACCATCATCCTT  
 GTGGCTAGCCTTCCATTTGTGCAGGACACTAAGAAGCGGAGCCTTGGGGACCCAGGTGTTCTTCTGC  
 TGGGCACCTGGGTCTCTTCTGCCTCGTGTTCCTGTGTGGTGAAGCCGGACTTCTACCTGTGCCTC  
 TCGACGCTTCTTGGGGTCTGTTGCCATCTGCTTCTCCTGTCTGGTAGCTCACGCTTTCCCTC  
 AACTTCTAACCCGGAAGAACCATGGGCCCCGAGGCTGGGTGATCTTACCGTGGCGCTGCTGCTACCC  
 TTGTGGAGGTCATCATTAAACCCGAGTGGCTTATCATCACCTGGTACGGGGAGGTGGCCAGGTTAGCC  
 CCTGGGCAATGTCAGTCCGACTCGACCATGACCTCTCCGTGTGCCATCGCCAACATGGACTTTGTCATG  
 GCTCTCATCTACGTAATGCTGTTGCTGCTGACGGCCTTCTAGGAGCCTGGCCACCTTGTGTGGCCGCT  
 TCAAGCCTGGCGAAACACGGGGTCTTGTGTGTGCTCACCCTGTCATCTCCATCGCCATCTGGGTGGT  
 ATGGATTGTCATGTACACCTACGCAACGAGCAGCACCATAGCCCCACCTGGGATGACCCACGTTGGCC  
 ATTGCCCTCGCTGCCAATGCCTGGACCTTGTCTCTTCTATGTATCCCTGAGGTCTCACAGGTGACCA  
 AACCTAGCCCAGAACAGAGCTACCAGGGGACATGTACCCGACCCGAGGGTGGGCTATGAGACCATCT  
 GAAGGAGCAGACGGCCAGAGCATGTTTGTGGAGAACAAGGCATTTTCTATGGACGAACCAGCCTCAGCA  
 AAGAGACCAGTGTACCTTACAGTGGCTACAATGGACAGCTGCTGACCAGCGTGTACCAGCCACCAGAGA  
 TGGCCCTGATGCACAAAGGCCCTGTAAGGTGCATACGACGTCATCTCCACGGGCCACCGCCAACAG  
 CCAGGTGATGGCAGTGCCTCAACCCTGCGGGCCGAAGACATGTACATGGTCCAGAGCCACCAGGTG  
 GCCACGCCACAAAGACGGCAAGATCTCTCAGGTCTTTAGAAATCCCTACGTGTGGAC

**ACGCGTACGCGGCCGCTCGAG** - GFP Tag - GTTTAA

**Protein Sequence:**

>MG215978 representing NM\_147217  
 Red=Cloning site Green=Tags(s)

MATHRLLMCLGLPLFFPGALAQNHAPPGCSPDLPLYYNLCDRSGAWGIVLEAVAGAGIITTFVLTIIL  
 VASLPFVQDTKKRSLTGTQVFFLLGTLGLFCLVACVVKPDFSTCASRRFLFGVLFALCFSLVAHVLSL  
 NFLTRKNHGRGWVIFTVALLLTLVEVIINTEWLIITLVRGGQVSP LGNV SADSTMTSPCAIANMDFVM  
 ALIYVMLLLTAFLGAWPTLCGRFKRWRKHGVFVLLTTVISIAIWWVWVIMTYGNEQHHSPWDDPTLA  
 IALAANAWTFVLFYVPEVSQVTKPSPEQSYQGDMPYTRGVGYETILKEQTQSMFVENKAFSMDEPASA  
 KRPVSPYSGYNGQLLTSVYQPTMALMHKGPSEGAYDVLPRATANSQVMGSANSTLRAEDMYMQSHQV  
 ATPPKDGKISQVFRNPYVWD

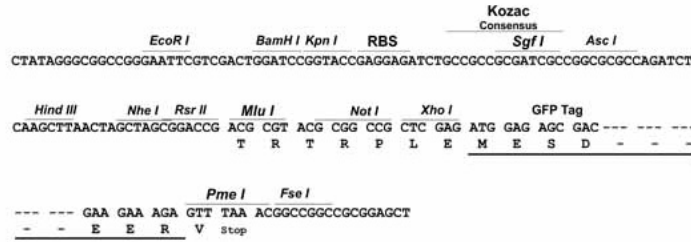
**TRTRPLE** - GFP Tag - V

**Restriction Sites:**

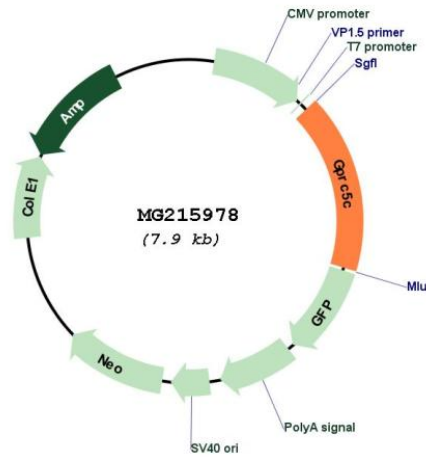
Sgfl-MluI

Cloning Scheme:

Cloning sites used for ORF Shutting:



Plasmid Map:



<b>ACCN:</b>	NM_147217
<b>ORF Size:</b>	1320 bp
<b>OTI Disclaimer:</b>	The molecular sequence of this clone aligns with the gene accession number as a point of reference only. However, individual transcript sequences of the same gene can differ through naturally occurring variations (e.g. polymorphisms), each with its own valid existence. This clone is substantially in agreement with the reference, but a complete review of all prevailing variants is recommended prior to use. <a href="#">More info</a>
<b>OTI Annotation:</b>	This clone was engineered to express the complete ORF with an expression tag. Expression varies depending on the nature of the gene.
<b>Components:</b>	The ORF clone is ion-exchange column purified and shipped in a 2D barcoded Matrix tube containing 10ug of transfection-ready, dried plasmid DNA (reconstitute with 100 ul of water).
<b>Reconstitution Method:</b>	<ol style="list-style-type: none"><li>1. Centrifuge at 5,000xg for 5min.</li><li>2. Carefully open the tube and add 100ul of sterile water to dissolve the DNA.</li><li>3. Close the tube and incubate for 10 minutes at room temperature.</li><li>4. Briefly vortex the tube and then do a quick spin (less than 5000xg) to concentrate the liquid at the bottom.</li><li>5. Store the suspended plasmid at -20°C. The DNA is stable for at least one year from date of shipping when stored at -20°C.</li></ol>
<b>RefSeq:</b>	<a href="#">NM_147217.3</a> , <a href="#">NP_671750.2</a>
<b>RefSeq Size:</b>	2037 bp
<b>RefSeq ORF:</b>	1323 bp
<b>Locus ID:</b>	70355
<b>UniProt ID:</b>	<a href="#">Q8K3J9</a>
<b>Cytogenetics:</b>	11 E2
<b>Gene Summary:</b>	This retinoic acid-inducible G-protein coupled receptor provide evidence for a possible interaction between retinoid and G-protein signaling pathways.[UniProtKB/Swiss-Prot Function]