

Product datasheet for **MG215967**

Skint5 (NM_001167876) Mouse Tagged ORF Clone

Product data:

Product Type:	Expression Plasmids
Tag:	TurboGFP
Symbol:	Skint5
Synonyms:	OTTMUSG00000008560; Skint-5
Mammalian Cell Selection:	Neomycin
Vector:	pCMV6-AC-GFP (PS100010)
E. coli Selection:	Ampicillin (100 ug/mL)

ORF Nucleotide Sequence: >MG215967 representing NM_001167876, **codon optimized**.
Due to the complexity of NM_001167876, the ORF clone is codon optimized for mammalian Expression.
The nucleotide sequence differs from the reference sequence, yet the amino acid sequence remains identical.

Red=Cloning site Blue=ORF Green=Tags(s)

TTTTGTAATACGACTCACTATAGGGCGGCCGGGAATTCGTCGACTGGATCCGGTACCGAGGAGATCTGCC
GCC**CGATCGCC**

ATGGGCGCAGTGGGTATCCCTTACAGCACATTCGTCGTCCTCTTTCTCCTCCAAATGGTGGCCCTTA
GCAGCGAACAGTTCACAGTCAACGGCTGGAGTCTCCTGTTCTTGTCCCTCTCGACGGGAATCTGGAGCT
CTTTGCCAGCTGAGTCTCCTCAGCAAGCAAAGCATATGGAGATCAGGTGGTTCAAGAACAGGTACAGT
GAACCTGTCTACCTGTACAGAAATGGAAAGGATCTTTTCGGGGAGATCGTCTACAAGTATGTGGAGAGAA
CCGAGCTCCTGAAGGACGACATTGGGAAAGGGAAGGTACCCTGCGGATCTTTAAAGTAACCTCCGTGGA
CTCCGGCAGCTACTACTGCTTCTTTAAGGATGGAAAGTTTTACGAGGAGCATATAATCGATGTGAAGTT
ACTGTACCTCTTCTGATATTCAGATCCTCATGCACCCTCCAAACATTAAGGAGTGGCAGCTGGAATGCC
ACAGTGGCGGGTGGTCCACAGCCCCACATGGAGTGGCGAGACTAAGGGTGAATACATACCGGCTAC
CTCCAAGAGTCATAGTCAGGACGAGAATGAGTTCTTTAACATGACCATGGACCTCTTCATCAAGTCAAAT
TCCCCTGGTCCAGCCACTGTACATTAGAAATTCGTAACATCAGGAAGAGAGTATCAGCATCGTAC
TGCCCGGTGTCTGGACAGCTGGTCCCGCATGGATCATGATTACTGCTGATAGTTATTCATATGAC
ATATTATTAAGCTGTACCGCACCTACGCTACTAAGGAGATGCTCCTTAAGAGTATCCAGAGCAGCTCT
CAGTCTAGTACTGTAGATACTGAGAAGAAGGAATGGCTGTTGAAGTCCATCCAAAGCCGAATCCAGTCTT
CCTCTGTGGATGCTGAGAAGAAGGAGTGGCTCCTTAAGTTCATTAGAGCAGTATCCAAAGCTCCTCCGT
GGACTAAGGAGTGGCTGCTCGAGAGCATCCAGTCTTCCATCCTTTCTCCATCGTCGACCAAGGCCACCA
AAGTACTCTTGCTTAAATCCATCCAAAGCTCCATCCAGAGCTACTCTGGATATCGAGACGAAGGAATT



GCTTCTCAAGAGCATTAGTCTTCCATTGAGCTCTATCATGGATCTTGGCACTAAGGAGCTGCTCCTG
AAGATTATTCAGAGCTCAATCCAATCCAGTTCAGTCGATCTTGGTACTAAGGAACTCCTTCTGAAGATTA
TCCAGAGTTCATCCAGTCTCCACTGTGGATCTGGGCACCAAGGAACTCCTCTGAAAATATTCAGTC
CTCAAATACAGTCTTCCCTCAGTCGACCTTGGGACAAAGGAACTCTTGCTCAAGATCATACAATCTAGCATC
CAAAGCAGCACTGTCGATTTGGGAACCAAGGAGCTGCTCCTTAAAAAATCCAGAGCTCAATCCAGTCCA
GCTCAGTCGATTTGGGTGCCAAGATGGGACTGCTGGAGAGCATCCTGAGCTCCATCCAGTCCAGCAACGT
AGATCTGGAACTAAAGTACTGCTGCTTAAAAGTATCCAGAGTAGCATTCAAAGCTCTACCGTCTATTTG
GGAAATTAACAATGGCTCCTGGAGAGGATCGAGAGCATTATACAGTCTTCTAGCGTCTACTTGGATACAA
AGGAATTGCTCCTCAAGATCATACAGAGTAGCATTGAGTCTTACTCAGTCGATCTGGCAACAAGGAATT
CCTGCTTAAGATCATCTGTCAAGCATTAGTCTCTTCCGTTGATCTTGGAAACAAAAGAGTTGCTCGTG
AAATTTCTTCAATCTAACATCCAATCAAGCAGTGTAAATCCTGGGACGAAGAAGCTCCTGGTTAAGATTA
TTCAAAGCTCACTTCAGAGCAGCAGTGTGGATCTCGGAACAAAGAAAGCTCCTCTCGATATTTATTCAGAC
CTCCATACAGAACTCTAATGTCCATACGGAAGAAAGGGGCTCCTGCTTAAAGATTATCCAGAGCTCCGTA
CAAAGTAGTTCAGTGGATCAGGGCACAAGGAAATGCTCCTCGAAATTATCCAGTCAAGTATCCAGAATT
CTTCTGTCAATCAGTGGACAAGGACCTGTTGCTGAAGATAATACAAGCATCATCCAATCCAGCAGCGT
CGATCTGGGGACCAAGGGTTTCTGCTCAAGATAATCCAATCCTCTATACAGAGCAGCAGCGTGGACATC
GGGACCAAGTCTATGCTGCTGAAGAAGACCGGTCTGATCCTCAAGTCTCAATAGTCAACCCCTGGGACTG
AACTGCTCTTCAAATTGATTGAATCAATCAGGCACTCATCCAGTGTAAATCTGAGACAAAAAAATGCT
GTCCGAGATTACTCAGTCCACTGTACAGAGCTCCTCTGTGAACCCCGTACTGAGGAGATGATTGAAGAA
AAGTACCAACTGCTCCTGCAGAGTTCAGCGTTAATTTGGAGGCTGAAAAATATACTGAACGTGACCACAC
AGTGGATTCTGCAAAATAGCAGTGTCAACCAGGAAAAAGAAATGCTGCTGCTGGACAAAATCCAGCAGAT
CCTTCAGATTTATCCGTGAATCCAGAGACTAAAGACCTGCTGCTGGAAAAGATTGAATTGATCCTTCAA
AACCCAGGAGTGCATCAAGAGACTAAGGACCTGCTTTTGGAACGGATACAGCTGATCCTTCAAACCTCAA
GGTCCAGAAAGGAACTAAGTACCTGCTCTGGAGAGAATACGGAGCATTCTGCAGTCTAGCTGCGTCCA
GAAGGAGACAAAGGATTTGCTGCTCGAACGAATTCAGAGTCTGCTCCAGAGCTCTTGCCTCCAGAAAGAA
ACAAAGGACCTGCTGCTCGAGAAAATTCAGCTTATCCTGCAGAACAGTACTGTCCACCAGGAAACCAAGG
ACCTCCTTTTGGAGCGGATACAGCTCTTCTGCAGAACTCTACCGTTGATCAGGAAACATCTTATCTGCT
GCTCAAAGGATCCAGCTCATCCTGCAGTCAAGCTCTGTGAAGAAGGAGACGAAGGAGTTCTGCTGTAC
ATTATCGAGTCTATCCTGCACTCCAGCAGCGTGCACCAGGAAACCAAGGATCTTCTTTTTGACAGGGTAC
AGCTGATCCTTGTGCTCTTCCGTCAGCAAGGACTCAAATGTTTGTCTCCTAACATGATTGAGTGTGAT
CTTCCAGAGAACAGTGTCCAGAAGGAAATGAAGGACTTGTGTTCAATCGGATCCCTTTGATTCTGGAG
AGCAGTAGTGTGCAGCAGGAACTAAGGACAAGCTCCTGGATATAATTCAAAGTATTCTGCAGAGGACCT
CCGTCCAGGAGGAAACGAAGGATAAGTGTGCTCGACATTATCCAGTCCATTCTTCCAGCGCTCTTCACTCCA
GAAAGATACCATCGACACCCTGCTGGACCGAATCCAGCTTATCTTGCAGCGCACCTCAGTGCAGAAGGAG
ATGAAGGATTTCTGCTTGATCGAATCAAGAGTATCCTGGAATCCTTTTCAAGTCCATCAGGAGACAAAGA
AGCTGCTGCTGAACCGGATCATGTCTATCCTTGTGCTCCTCCAGGTGCACCAGGAAACCAAGAAAGCTGCT
CTTGGAGCGAATCCAGTCTATATTGGAATCTAGTTCTGTTTCAAGAGACTAAAAAGTTGTTGTTGGAC
CGCATCCACAGTATTCTGAAGTCTAGCTCTGTGCAGAAGGAGACAAAGAACCTCCTCCTGGATCGCATCC
ATTCATCCTTAAGTCATCATCCGTCAGAAAGAAAGCTGCAACAAGAGAAATCCCTTTTGGAAAAAGTA
TGCCCTTGATCTGGAAATCTCAGTGTTTACCATCATTGTTGTACCCCTGATAATGCACCTCAAACAGAGA
GAAGCAGACCAGCATTTGAGTTGAATACATTGTGGTCCAAAGACACCTCTGTGATCCTGTGCGTGTGTA
TCATGTTCAATAATCGGCTCAAGGCACTGATCTATTTCAAGTTGTACGGCTTTAGCCCCCAGGTAAGGC
TCATAAATATATCGTAACTACATTCTCCGTTTCAAGCACCCTGTGTTCTGCATCGTCTACTCCGCCACT
ATACTTTACATGTATCTGCAGATTCAGAAACAAAGGATTCACTTTTAGCCTGTACAATTCTTGGATGGTTG
AAATGGAGATGTTTCTCATATTTCTGCTCGTATCTTCAACGTCAAGAATATCGCAACTGTGCTGCTCTA
CTTCGACTCAACCACCCTGAGGCTGTTTTTTTGGATAAAGGGA

ACGCGTACGCGGCCGCTCGAG - GFP Tag - GTTTAA

Protein Sequence:

>MG215967 representing NM_001167876
 Red=Cloning site Green=Tags(s)

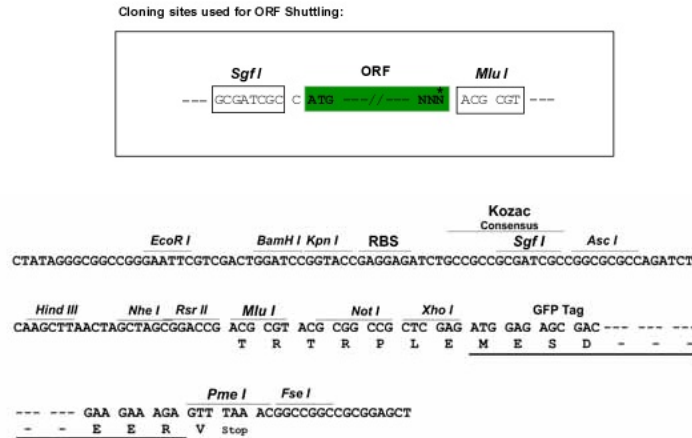
MGAVGIPLTAHCVVLFLLQMVALSSEQFTVNGLESPVLVPLDGNLELSCQLSPPQQAQHMEIRWFKNRYSEPVYLYRNGKDLFGEIVYKYVERTELLKDDIGKGKVTLRIFKVTSDSGSYHCFKDKGFYEEHIDVKVTATSSDIQILMHPNKGVRLECHSGGWFPQPHMEWRDSKGEYIPATSKSHSQDENEFNMMDLFIKNSHWSATCYIQNFVTHQEEISIVLPGVWDSWCPAWIMITLLIVIHMTYYIKLYRYYATKEMLLKSIQSSSQSSTVDTEKKEWLLKSIQSRIQSSSVDAEKKEWLLKFIQSSSIQSSVDLEKKEWLLKSIQSSIQSAIVDRGTKEWLLKSIQSSILSSIVDQGTKVLKSIQSSIQSSSTLDIETKELLKSIQSSIQSSIMDLGTEKELLKIIQSSIQSSSVDLGTEKELLKIIQSSIQSSSTVDLGTKELLKIIQSSIQSSSVDLGTEKELLKIIQSSIQSSSVDLGAKMGLLESILSSIQSSNVDLKTVLLKSIQSSIQSSSTVYLGIKQWLLERIESIIQSSSVYLDTKELLKIIQSSIESYSVDLGNKEFLKIIILSSIQSSSVDLGTEKELLVKKFQNSIQSSSVIPGTTKLLVKIIQSSLQSSSVDLGTTKVLDDIIQTSIQNSNVHTERKGLLLKIIQSSVQSSSVDQGTKEMLLEIIQSSIQNSVNVQTKDLLLLKIIQSSIQSSSVDLGTTKGLLIIQSSIQSSSVDI GTKSMLLKKTGLILKSSIVNPGTELLFQLIESIRHSSVNSETKMLSEITQSTVQSSSVNPTVEEMIEEKYQLLQSSSVNLEAENILNVTQWILQISSVNOGKEMLLDKIIQILQISSVNPETKDLLLEKIELILQNPQVHGETKDLLLRIQLILQNSSVQKETYLLERIRSIQSSCVQKTKDLLLLRIQSSLQSSCVQKTKDLLLLKIIQLILQNSTVHGETKDLLLRIQLFLQNSTVDQETSLLLLKRIQLILQSSSVKKEKTEFVLYIIESILHSSSVHGETKDLLFDRVQLILESSVQGLKCLLLNMIQVIFQRTSVQKEMKDLLFNRIPLILESSSVQGETKDLLDIIQSSILQRTSVQEETKDKLLDIIQSSILQSSSVQKDTIDTLLDRIQLILQRTSVQKEMKDFLLDRIKSILEFSVHGETKLLLRIMSILESTVHGETKLLLRISILESSSVQGETKLLLRIRHSILKSSSVQKTKNLLDRIHSILKSSSVQKESCNKRNPFWKYALDLGISVFTIIVVTLIMHLKQREADQHFELNLTWSKDTSVILCVLIMFNRLKALYFRLYGFPSPGKAHKYIVNYILRFVSHVFCIVYSATILYMYLQIQNKDSLFLYNSWVEMEMVLIFFLVIFNVKNIATVLLYFDSTTLRLLFFWIKG

TRTRPLE - GFP Tag - V

Restriction Sites:

SgfI-MluI

Cloning Scheme:



ACCN:

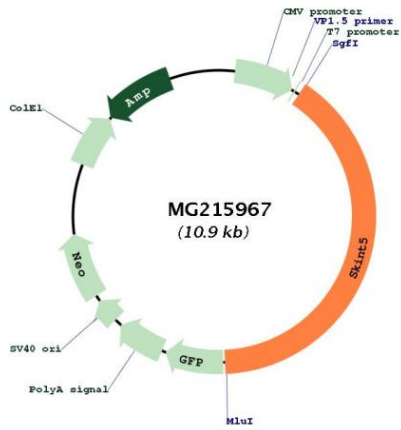
NM_001167876

ORF Size:

4383 bp

OTI Disclaimer:	The molecular sequence of this clone aligns with the gene accession number as a point of reference only. However, individual transcript sequences of the same gene can differ through naturally occurring variations (e.g. polymorphisms), each with its own valid existence. This clone is substantially in agreement with the reference, but a complete review of all prevailing variants is recommended prior to use. More info
OTI Annotation:	This clone was engineered to express the complete ORF with an expression tag. Expression varies depending on the nature of the gene.
Components:	The ORF clone is ion-exchange column purified and shipped in a 2D barcoded Matrix tube containing 10ug of transfection-ready, dried plasmid DNA (reconstitute with 100 ul of water).
Reconstitution Method:	<ol style="list-style-type: none">1. Centrifuge at 5,000xg for 5min.2. Carefully open the tube and add 100ul of sterile water to dissolve the DNA.3. Close the tube and incubate for 10 minutes at room temperature.4. Briefly vortex the tube and then do a quick spin (less than 5000xg) to concentrate the liquid at the bottom.5. Store the suspended plasmid at -20°C. The DNA is stable for at least one year from date of shipping when stored at -20°C.
Note:	Plasmids are not sterile. For experiments where strict sterility is required, filtration with 0.22um filter is required.
RefSeq:	NM_001167876.1 , NP_001161348.1
RefSeq Size:	4497 bp
RefSeq ORF:	4386 bp
Locus ID:	242627
UniProt ID:	A7XUY5
Cytogenetics:	4 D1
Gene Summary:	May act by engaging a cell surface molecule on immature T-cells in the embryonic thymus. [UniProtKB/Swiss-Prot Function]

Product images:



Circular map for MG215967