

Product datasheet for **MG215904**

Krt35 (NM_016880) Mouse Tagged ORF Clone

Product data:

Product Type:	Expression Plasmids
Product Name:	Krt35 (NM_016880) Mouse Tagged ORF Clone
Tag:	TurboGFP
Symbol:	Krt35
Synonyms:	A1662400; Ha5; Krt1-24; Krtha5
Mammalian Cell Selection:	Neomycin
Vector:	pCMV6-AC-GFP (PS100010)
E. coli Selection:	Ampicillin (100 ug/mL)



[View online »](#)

ORF Nucleotide Sequence:

>MG215904 representing NM_016880
 Red=Cloning site Blue=ORF Green=Tags(s)

TTTTGTAATACGACTCACTATAGGGCGGCCGGAATTCGTCGACTGGATCCGGTACCGAGGAGATCTGCC
 GCC**CGGATCGCC**

ATGGCTTCCAATGCCTCAAGGCCAGTCTCTCCTCAGGATCTCTGAAGAGCCCGGGAAAGCCGGAGGGG
 GATCCACTCGCGTGCCAACATGTACTCCAGCAGCTCTTGCAAGCTGCCAGCCCTCCCGTGGAGCCCG
 GAGTTTCTCCGTGTGTTCCGCTGGCCTGGGAGAGGCAATTACAGGGTATCCAGCTGCCTCCAGCTCTC
 TGCTCCCAACGGGAGGCTTTGCCACCAGCTACGGCACGGGTGGAGGTTGGTTTGGAGAAGGCATCTCA
 CTGGTAATGAGAAGGAGACCATGCAGTCCCTGAATGACCGCTGGCCAGCTATCTGGAGAAGGTGCCCA
 GCTGGAGCAGGAGAATGCCAGCCTGGAGAGCCGAATTCGGGAGTGGTGTGAGCAGCAGGTGCCCTATATG
 TGCCCCGATTACCAGTCTTACTCCGGACCATGGAGGAGCTCCAGAAGAAGACTCTTTCAGCAAGGCAG
 AGAACGCCAGGCTGGTGGTGCAGATTGACAATGCCAAGCTGGCTGCTGATGACTTCAGGACCAAGTATGA
 GACTGAGGTTTCCCTGCGGCAGCTGGTGGAGGCTGACATCAATGGCTGCGCAGAATCCTGGATGATCTG
 ACTCTGTGCAAGGCTGACCTGGAAGCTCAGGTGGAGTCTCTGAAGGAAGAATTGCTTTGCCTCAAGAAGA
 ACCATGAGGAGGAAGTGAACACTACTGCGCTGCCAGCTTGCGCATCGGCTCAATGTTGAGGTGGATGCTGC
 TCCACCCGTTGACCTGAACCGCTTCTGGATGAGATGAGGTGCCAGTATGAGACCTTGGTGGAGAATAAC
 CGGAGGGATGCTGAAGACTGGTATGACACCCAGACCGAGGAACCTGAACAGCAGGTTGTGTCAGCTCAG
 AGCAGCTGCAGTCTGCCAGTCGGACATCATTGAGTTGAGACGCACTGTCAACTCTCTGGAGATAGAGCT
 GCAGGCCAGCAGAGCATGAGAGATGCTTTGGACTCCACCCTGGCAGAGACAGAAGGCCGCTACAGCTCT
 CAGCTGGCTCAGATGCAGTGCATGATCGCAATGTGGAGTCCCAGCTTGGTGAGATCCGGGCTGACCTGG
 AGCGTCAGAACCAGGAGTACCAGGTGCTGCTGGATGTCCGGGCCAGGCTGGAGTGTGAGATCAACACGTA
 CAGGGGCCCTGCTGGAGAGCGAGGACAGCAAGCTTCCCTGCAACCCGTGTGCCCTGACTACTCTTCTCC
 AAGTCATGCCTCCCTGCCTTCTGCGGTCTCCTGCAGCACGGGCGCAGCTCGTACCACCTGCAGCCCC
 GCCCTGTCTGTGCCCTGCCAGGGGCCGGTTC

ACGCGTACGCGGCCGCTCGAG - GFP Tag - GTTTAA

Protein Sequence:

>MG215904 representing NM_016880
 Red=Cloning site Green=Tags(s)

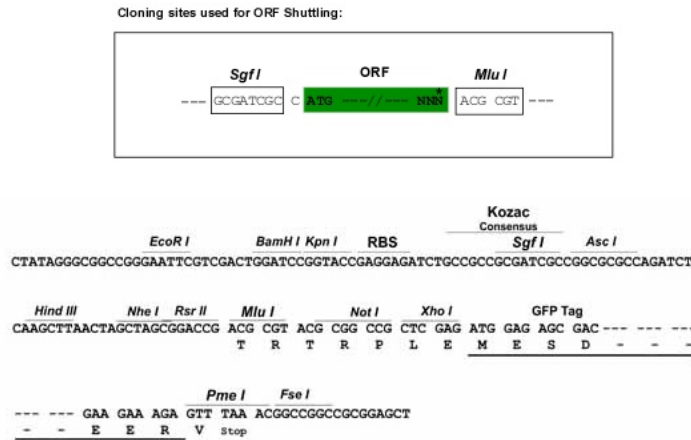
MASKCLKASFSSGSLKSPGKAGGGSTRVSNMYSSSSCKLPSPSRGARSFVCSAGLGRGNRYVSSCLPAL
 CLPTGGFATSYGTGGWFGEIILTGNEKETMQSLNDRLASYLEKVRQLEQENASLESRIREWCEQQVPYM
 CPDYQSYFRTMEELQKKTLCSPAENARLVVQIDNAKLAADDFRTKYETEVSRLQLVEADINGLRRILDDL
 TLCKADLEAQVESLKEELLCLKKNHEEEVNSLRCQLGDRLNVEVDAAPPVDLNRVLDEMRCQYETLVENN
 RRDAEDWYDTQTEELNQVVSSEQLQSCQSDI IELRRTVNSLEIELQAQSMRDALDSTLAETEGRYSS
 QLAQMOCMIGNVESQLGEIRADLERQNEYQVLLDVRARLECEINTYRGLLESEDSKLPNCPCAPDYSS
 KSCLPCLPAVSCSTGAARTTCSRPVPCVPCGGRF

TRTRPLE - GFP Tag - V

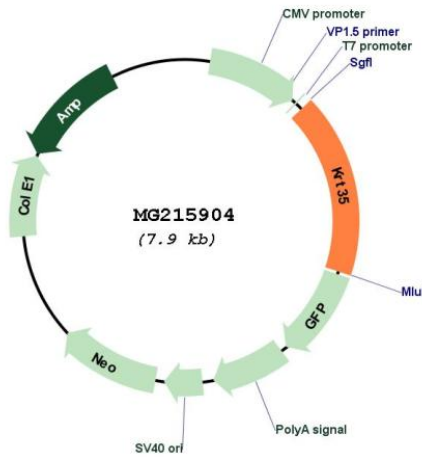
Restriction Sites:

SgfI-MluI

Cloning Scheme:



Plasmid Map:



ACCN: NM_016880

ORF Size: 1365 bp

OTI Disclaimer: The molecular sequence of this clone aligns with the gene accession number as a point of reference only. However, individual transcript sequences of the same gene can differ through naturally occurring variations (e.g. polymorphisms), each with its own valid existence. This clone is substantially in agreement with the reference, but a complete review of all prevailing variants is recommended prior to use. [More info](#)

OTI Annotation: This clone was engineered to express the complete ORF with an expression tag. Expression varies depending on the nature of the gene.

Components:	The ORF clone is ion-exchange column purified and shipped in a 2D barcoded Matrix tube containing 10ug of transfection-ready, dried plasmid DNA (reconstitute with 100 ul of water).
Reconstitution Method:	<ol style="list-style-type: none">1. Centrifuge at 5,000xg for 5min.2. Carefully open the tube and add 100ul of sterile water to dissolve the DNA.3. Close the tube and incubate for 10 minutes at room temperature.4. Briefly vortex the tube and then do a quick spin (less than 5000xg) to concentrate the liquid at the bottom.5. Store the suspended plasmid at -20°C. The DNA is stable for at least one year from date of shipping when stored at -20°C.
RefSeq:	<u>NM_016880.2</u> , <u>NP_058576.2</u>
RefSeq Size:	1742 bp
RefSeq ORF:	1368 bp
Locus ID:	53617
UniProt ID:	<u>Q49714</u>
Cytogenetics:	11 D