

Product datasheet for **MG215898**

Taar4 (NM_001008499) Mouse Tagged ORF Clone

Product data:

Product Type:	Expression Plasmids
Tag:	TurboGFP
Symbol:	Taar4
Synonyms:	Gm226; Ta2; taR-4
Mammalian Cell Selection:	Neomycin
Vector:	pCMV6-AC-GFP (PS100010)
E. coli Selection:	Ampicillin (100 ug/mL)

ORF Nucleotide Sequence: >MG215898 representing NM_001008499
Red=Cloning site Blue=ORF Green=Tags(s)

TTTTGTAATACGACTCACTATAGGGCGGCCGGGAATTCGTCGACTGGATCCGGTACCGAGGAGATCTGCC
GCCGCGATCGCC

ATGAATACACCCGACCCCTGGAGCTCCCCAGAAGTACAGTTTTGCTTTGCTGCTGCAAACAGTTCTTGCC
CAAGGAAGGCGAGGCTGCGCTCGTTGTCTGTGCCATGTACCTCATCATGATTGGAGCGATAGTGATGAC
CATGCTGGGAAACATGGCTGTGATCATCTCTATTGCCACTTCAAGCAGCTCCACTCCCCAACCAACTTC
CTTATCTCTCCATGGCTACCACAGACTTCTGTTGAGTTGCGTGGTCATGCCCTTCAGTATGATCCGGT
CCATCGAGTCATGCTGGTACTTCGGAGACCTCTTTTGCAAAGTTCACAGCTGCTGTGACATCATGCTCTG
TACCACATCCATTTCCACCTCTGCTTCATCTCAGTTGACCGCCACTATGCCGCTGCGACCCCTTTGCAC
TACGTCACCCAAATCACGACCCGGTGGTAGGGTCTTTCTACTCATCAGTTGGTCTGTTCCCATCTTTT
TTGCCTTTGGCTTGGTATTCTCAGAATTAATCTGATTGGTGTGAGGATTTTGTGCGAGCCATTGACTG
TACAGGTTTGTGTGTTGATATTTAAACAAGCTCTGGGGAGTTCTGGCTTCTTCATAGCTTTCTTTCTG
CCTGGGACAGTCATGGTAGGGATTTACATACACATTTTCACAGTTGCCAGAAACATGCCAGGCAGATTG
GTACAGGTCCTAGGACAAAACAGGCCCTCTCAGAAAGCAAATGAAGGCCACATCAAAAAAGGAAAGCAA
GGCCACCAAGACTTTAAGCATTGTCTGAGGAGTGTGTTGTTGTTGGCTACCCTTTTTTGTCTTGACA
ATCACAGACCCCTTTCATTGATTTTACAACCCCTGAAGATTTGTATAATGTTTTCCCTTTGGCTTGGTTATT
TTAATTTCACTTTCAATCCCATCATATATGGCATGTTCTATCCCTGGTTTCGAAAGGCCCTGAGGATGAT
AGTCACAGGAACGATCTCCGCTCTGACTCTTCTACCTCAAGCCTGCATCCTGCACATCCT

ACGCGTACGCGGCCGCTCGAG - GFP Tag - GTTTAA



Protein Sequence: >MG215898 representing NM_001008499
 Red=Cloning site Green=Tags(s)

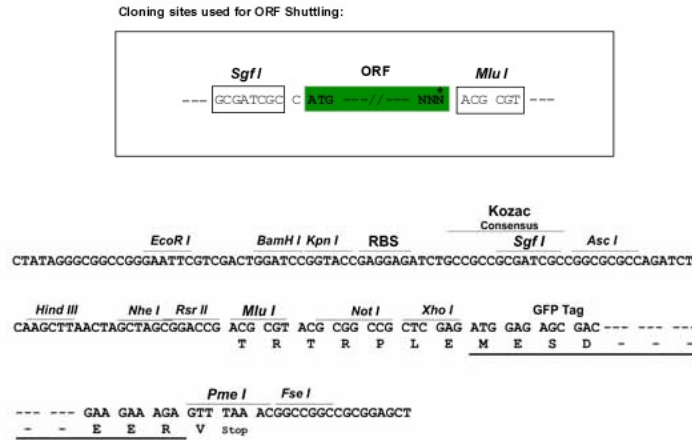
MNTPDPWSSPEVQFCFAAANSSCPKARPALVVCAMYLIMIGAIVMTMLGNMAVIISIAHFKQLHSPTNF
 LILSMATTDFFLLSCVMPFMSIRSIESCWYFGDLFCKVHSCCDIMLCTTSIFHLCFISVDRHYAVCDPLH
 YVTQITTRVGVFLLISWSVPIFFAFGLVSELNLIGAEDFVAIDCTGLCVLIFNKLWGVLASFIAFFL
 PGTVMVGIIYHIFTVAQKHARQIGTGPRTKQALSESKMKATSKKESKATKTLISIVMGVFLCWLPPFVLT
 ITDPFIDFTTPEDLYNVFLWLGYNSTFNPIIYGMFYPWFRKALRMIVTGTIFRSDSSTSSLHPAHP

TRTRPLE - GFP Tag - V

Chromatograms: https://cdn.origene.com/chromatograms/ja1891_b06.zip

Restriction Sites: SgfI-MluI

Cloning Scheme:



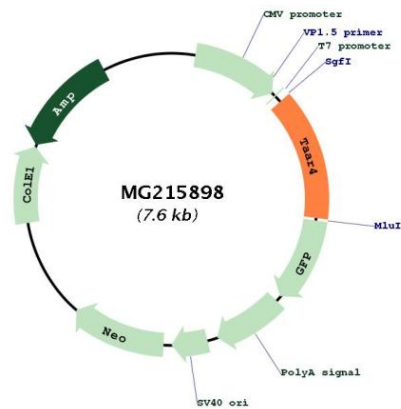
ACCN: NM_001008499

ORF Size: 1041 bp

OTI Disclaimer:	<p>Due to the inherent nature of this plasmid, standard methods to replicate additional amounts of DNA in E. coli are highly likely to result in mutations and/or rearrangements. Therefore, OriGene does not guarantee the capability to replicate this plasmid DNA. Additional amounts of DNA can be purchased from OriGene with batch-specific, full-sequence verification at a reduced cost. Please contact our customer care team at custsupport@origene.com or by calling 301.340.3188 option 3 for pricing and delivery.</p> <p>The molecular sequence of this clone aligns with the gene accession number as a point of reference only. However, individual transcript sequences of the same gene can differ through naturally occurring variations (e.g. polymorphisms), each with its own valid existence. This clone is substantially in agreement with the reference, but a complete review of all prevailing variants is recommended prior to use. More info</p>
OTI Annotation:	<p>This clone was engineered to express the complete ORF with an expression tag. Expression varies depending on the nature of the gene.</p>
Components:	<p>The ORF clone is ion-exchange column purified and shipped in a 2D barcoded Matrix tube containing 10ug of transfection-ready, dried plasmid DNA (reconstitute with 100 ul of water).</p>
Reconstitution Method:	<ol style="list-style-type: none">1. Centrifuge at 5,000xg for 5min.2. Carefully open the tube and add 100ul of sterile water to dissolve the DNA.3. Close the tube and incubate for 10 minutes at room temperature.4. Briefly vortex the tube and then do a quick spin (less than 5000xg) to concentrate the liquid at the bottom.5. Store the suspended plasmid at -20°C. The DNA is stable for at least one year from date of shipping when stored at -20°C.
Note:	<p>Plasmids are not sterile. For experiments where strict sterility is required, filtration with 0.22um filter is required.</p>
RefSeq:	<p>NM_001008499.1, NP_001008499.1</p>
RefSeq Size:	<p>1044 bp</p>
RefSeq ORF:	<p>1044 bp</p>
Locus ID:	<p>209513</p>
UniProt ID:	<p>Q5QD15</p>
Cytogenetics:	<p>10 A4</p>

Gene Summary:

Olfactory receptor specific for 2-phenylethylamine, a trace amine present at high concentration in the urine of carnivore species, playing a key role in fear and avoidance responses. 2-phenylethylamine acts as a kairomone in the chemical detection of carnivore odor and triggers fear in mice. This receptor is probably mediated by the G(s)-class of G-proteins which activate adenylate cyclase.[UniProtKB/Swiss-Prot Function]

Product images:

Circular map for MG215898