

Product datasheet for **MG215884**

Tdrd5 (NM_001134741) Mouse Tagged ORF Clone

Product data:

Product Type:	Expression Plasmids
Product Name:	Tdrd5 (NM_001134741) Mouse Tagged ORF Clone
Tag:	TurboGFP
Symbol:	Tdrd5
Synonyms:	Gm103
Mammalian Cell Selection:	Neomycin
Vector:	pCMV6-AC-GFP (PS100010)
E. coli Selection:	Ampicillin (100 ug/mL)
ORF Nucleotide Sequence:	>MG215884 representing NM_001134741 Red=Cloning site Blue=ORF Green=Tags(s)

TTTTGTAATACGACTCACTATAGGGCGGCCGGAATTCGTCGACTGGATCCGGTACCGAGGAGATCTGCC
GCC**CGATCGCC**

ATGTCTGAACAAGAGCGTATACAGGACTGTCTGAGGAAAGAGATAAGGTCCTTCTTATTTCCACTAAGG
ATGTTTACTCCACAACAGTTGGAAAAGGAGTACCTTTTGGTGGTGGCAACCTCTCCCGCTCCGAAT
CCTTGGATATCGGTCCACTATGGAAGTGGTGGATATGCCGATGTGGTTAGTGTCTGCCCGGTGGG
GATGGTACCGTAATACTGAAAGCCATTCAGACGAATCCACCAAAGGAATAGCAAGTTGGTTGCAAGC
AGAGAAGGAGCCATAAAGTCCGAACTCCATGCCAAAGGAAGACCCAGCATATGCTCTGGCCGGTGCC
TTACCGAGGAAGGTGCCCAATTCTCCAGCTGTAGTGAAGAGTGAGTTGAAAGACCTTTGGCATTG
TCTCCCGTTCTCTTTCTGACTTTGAAAAGGCATTTGCCAGGCGTTTTGGACGATCATTTTCAGTATATGC
AGTATGGATTCTCTCTATGTTTGAAGTGTGATGCAGCTTCGGATGTCATTTCTGTAGAGCAGACCAG
AGCAGGTTCTCTGTTGACACTAAAAAGAGTGTATCAGAGGACAAGCAGAGAGGATGGCCAGCAGGTA
GTTTTTACTCAGCCATTTAGAATGAAACAACAGGGTCAATTCTACAGGATCCAGTAATGAAGGCAC
ACTTTTACAACCCATTTCAAATATGGAGCCCCCAACAAGTACTGAGCATGGCGAAGACACCCACGTT
TAATTCTGTGGAGGCTTCAAGGCTGAACCACACTGAAAAATTAATCAGTTGGAGAGCACATTTCAAATCC
GTGATTGCACAGATTGGACCTGGAGGACTGTTGATCCTGAGCTAAAGCGCAAGATACAATTTGTCGTGT
CTAAGTTTCCACAAGGTTTGTATTTCTAAACTGCTTGGAGAATTTGAGCTAACTTTTAAAGAGCAACT
TTCACCAAAACAATTAGGGTTCTTAAACGTGACAGAATTTGTTGGCGCTCTTAGTGACATTTCTCCGAGTT
GAGTTCAGTGAAGAAAGGCAAGACTTGCTCGTGTGTTGATGCTGACCTGAAGCCTCTGCCGCTGGTGGAC
CGCTTTCATCAGTCAGAAATTCGTGTTAGTTCAACCAGACAAGAAAACAGAAGCTAACCCCTGGACTTC
CAGTCTCTCCAGAAATTCATATCCACTGTAGCAGTTAAGAAGACCACGTGGGATTGCCCTTTGAAGAAC
CAGAAGGAGCCAGAACAGAAGATATAACAAGAAGCCTAATCTGGTGGTCAAGCCTCTGCAGCTGCAGGTAG
AAACAAACAACCGCAGCTCAGCCTGTGAGTGGCAAACACGATATCCCACAGACGCTGTGCGTGCCAA
GAAATTGTGCAGACTTCTCCATTAGATACCAGCACCTTGTGGGGTCTTCGTGGAGTATAATCTCC



[View online »](#)

CCTAGTCAGTTCTACATCCGGATCTACAGCAGAGATTCCTCAGAACTACTTGAAGACATGATGATTGAAA
 TGCAGCGCTGCTACTCCAACCAGCTGGTCTCTGACCGGTACATTATGCCAGAATATTTTATAACAACCAGG
 ACATCTCTGTTGTGTAAGATCTCTGAGGACAAGTGGTGGTACCGGGTTATTATCCATCGGATCCTTGGG
 AAAAAGGAAGTGGAAAGTGTCTACCCAGATTCGGAATATCGGAACTGTGCAGAAGTCTCGCTGAGGT
 TCCTCAAATGCTGCTACACAAAGCTCCAGCTCAGGCTATCCCTTGCTCTTTGGCGTGGGTGAGGCCCGC
 AGAGGAACACTGGACAGCCAGAGCTATTTGCACCTCCAGAAGCTGTGTGGTTTGAAGCCATTGGTGGGG
 GTGGTGGATGAGTATATAGACGGAATCCTTAATATTTTTCTTTGTGATACGTCCTCAAATGAAGATGTGT
 ATTTTCATCATGTCTTGAGGACAGAAGGCCATGCTATTGTATGCCGAGAAAATGCCCATCCAAGGGCTT
 CAGGGATTCAACCCACCAGCTCTGTACTAACCAGCTCAGCGGGGACATGGTCTGACAGACCTG
 GGGCATCTGCTCAGCAGCACTATTTAAATGAAGACCAGGAGATACTGCAGCAAGCCAGCAAGATATTA
 ATGATGGAAGTGTATAAGTTACCTTAAATCTGCGCCCAAGGAATTATTAAGGATTCTAAATTGAGCTC
 ATTGAAAAACATAAGAGCTGTGAAGAGGACCCACGGTGGTCCATCTGCAGCCCAAGGATCTGAAGGAA
 GAAAATGAGGATGAGTCCCTACTGGAATGCCATGCCCTGGAGTCAGTGACCATAGGTGACGATGTTTGGG
 ATGAGAAGTGGTCCCTCTACAGGCCAAAATGGGAAGGCAGGGAGTCTGCCTCCAGCTGTTTACTTC
 AAACCTTGTGGGAAGAAACAATATCAGACAGGTGGAGAATGGCACAAAAGACTGGTGTTTTTCTACA
 TCTAAAGATATATGGGATGATTCCTGGCAGCCCTTAGGCCTTGGCAATGATGTGAAAGGAGGAATCACA
 CACCAGAAGGGCCATTGCTCAAGAAAAAATACCAGCACAACCCGAATCAACAGCAGCCAGATTTACA
 GTATCCTTTGGATTCTTCCACACTGCCAAAAGTGAAGAGTCTACATCTCTGATCAAGTCTCAGCAG
 TCCGCAGAGAGGACCGTCTGAACCTGCCAGCATTAGACTCATGCCGGACGGGACGCCTCAAAGCAC
 TCAGTTCAACCCCTGCAGTGGGTGACTCTCCAGAAAACACTCTGGCTCTGTGGAAGCTCTCCAGGGAG
 CCTAAAGAAAGAAGATGTTTCTAATAGCCGTGCTGAAGCCACGGCAAGGACAAGAGTCAGGGAGCCATA
 GACCAGCTCTCTTTCATTTGTCCCCCAGCACCAGATTTCTCAGAAGCTCTACATCCCTCGAAGTACAG
 CCACAGCTGTCTTGGGAGCTGCGGCACGGTTAGCCACGTCCAGGAGCCTCCTGCACTGGTACCCAGTGT
 GAAAGGAGGGAAGCTTGAGGCAGAGAGATGGAGTGAAG

ACGCGTACGCGGCCGCTCGAG - GFP Tag - GTTTAA

Protein Sequence:

>MG215884 representing NM_001134741
 Red=Cloning site Green=Tags(s)

MSEQERIQDCLRKEIRSLLISTKDGLTPQQLEKEYLLMVG NHLPLRILGYRSTMELVLDMPDVVSVCPGG
 DGTVILKAIPDESTKGIASLVAKQRSHKVRNSMPKGRPSICSGRVPYRGRVPPILPAVKSELKDLLAL
 SPVLLSDFEKAFARRFGRSFQYMQYGF L SMFEVLNAASDVISVEQTRAGSLLTLKKSVEDKQRGWPAK
 VFTQPFMRKQQGSYSTGFVPMKAHFSQPISNMEPPKQVLSMAKTPTFNSVEASRLNHTEKLNQLESTFKS
 VIAQIGPGGTVDPELKRKIQFVVS KFPQGLFISKLLGEFELTFKEQLSPKQLGFLNVT ELVGALSDILRV
 EFSEERQDLLVFDADLKPLPSGGPLSSVRNSCLVQPDKKTEANPWTSSLSRNSLSTVAVKKTWDCPLKN
 QKEPEQKIYKKPNLVVKPLQLQVETNKPQLSLVANHDIPDAVRAKCLRLPPLDSTLVGVFVEYIIS
 PSQFYIRIYSRDSSELLEDMMIEMRRCYSNQLVSDRYIMPEYFIQPGHLCCVKI SEDKWWYRVIIHRILG
 KKEVEVFYPDFGNI GTVQKSSLRFLKCCYTKLPAQAIPCSLAWVRPAEEHWTARAILHFQKLCGLKPLVG
 VVDEYIDGILNIFLCDTSSNEDVYFHHVLRTEGHAIVCRENAPSKGRDFNPPALYTNASSAGDMVLTDL
 GHPAQQHYLNEDQEILQQAQQDINDGKCSYLKSA PKELLKDSKLSLTKHKSCEEDPRWSILQPKDLKE
 ENEDEVPTGMPCLESVTIGDDVW DENWLPLQAKMGKAGSPASQLFTSNL VGKKQYQTGGEMAQKDWCFST
 SKDIWDDSWQPLGLANDVKGGIHTPEGPIAQEKNTSTTRIQQPDLQYPLDSSTLPKLEEFYISL IKSQQ
 SAERSQSEPA SIQTHAGRAASKALSSTPAVG DSPENHSGSVESSPGSLKKEDVSNRAEATAKDKSQGAI
 DQLSFI LSPQHQS QKLYIPRSTATAVLGAAARLATSRSLLHWYPSVKGKLEAERDGVK

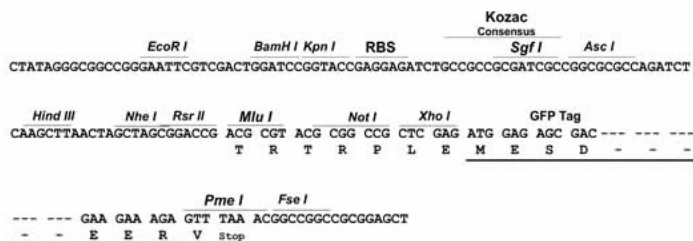
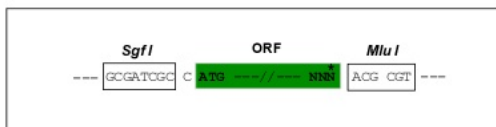
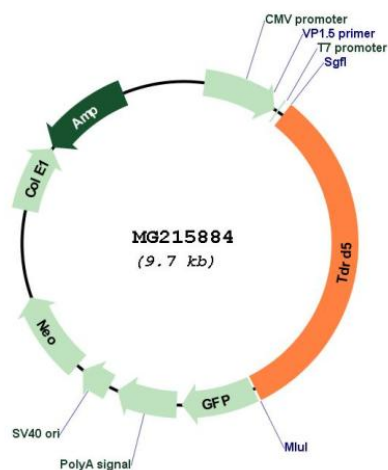
TRTRPLE - GFP Tag - V

Restriction Sites:

Sgfl-Mlul

Cloning Scheme:

Cloning sites used for ORF Shutting:

**Plasmid Map:****ACCN:** NM_001134741**ORF Size:** 3120 bp

OTI Disclaimer: The molecular sequence of this clone aligns with the gene accession number as a point of reference only. However, individual transcript sequences of the same gene can differ through naturally occurring variations (e.g. polymorphisms), each with its own valid existence. This clone is substantially in agreement with the reference, but a complete review of all prevailing variants is recommended prior to use. [More info](#)

OTI Annotation:	This clone was engineered to express the complete ORF with an expression tag. Expression varies depending on the nature of the gene.
Components:	The ORF clone is ion-exchange column purified and shipped in a 2D barcoded Matrix tube containing 10ug of transfection-ready, dried plasmid DNA (reconstitute with 100 ul of water).
Reconstitution Method:	<ol style="list-style-type: none">1. Centrifuge at 5,000xg for 5min.2. Carefully open the tube and add 100ul of sterile water to dissolve the DNA.3. Close the tube and incubate for 10 minutes at room temperature.4. Briefly vortex the tube and then do a quick spin (less than 5000xg) to concentrate the liquid at the bottom.5. Store the suspended plasmid at -20°C. The DNA is stable for at least one year from date of shipping when stored at -20°C.
RefSeq:	<u>NM_001134741.1</u> , <u>NP_001128213.1</u>
RefSeq Size:	3462 bp
RefSeq ORF:	3123 bp
Locus ID:	214575
UniProt ID:	<u>Q5VCS6</u>
Cytogenetics:	1 G3
Gene Summary:	Required during spermiogenesis to participate in the repression transposable elements and prevent their mobilization, which is essential for the germline integrity. Probably acts via the piRNA metabolic process, which mediates the repression of transposable elements during meiosis by forming complexes composed of piRNAs and Piwi proteins and govern the methylation and subsequent repression of transposons. Required for chromatoid body (CB) assembly.[UniProtKB/Swiss-Prot Function]