

Product datasheet for **MG215852**

Wdr27 (NM_175173) Mouse Tagged ORF Clone

Product data:

Product Type:	Expression Plasmids
Tag:	TurboGFP
Symbol:	Wdr27
Synonyms:	0610012K18Rik
Mammalian Cell Selection:	Neomycin
Vector:	pCMV6-AC-GFP (PS100010)
E. coli Selection:	Ampicillin (100 ug/mL)



[View online »](#)

ORF Nucleotide Sequence: >MG215852 representing NM_175173
Red=Cloning site Blue=ORF Green=Tags(s)

TTTTGTAATACGACTCACTATAGGGCGCCGGGAATTCGTGCGACTGGATCCGGTACCGAGGAGATCTGCC
GCCGCGATCGCC

ATGGAACGCCTCCAGAGATGCCCTCCACTGATGGCCACACTCGAGCTATAGTTACAGAACGATACGTGG
TTGAGTCGAAGAAGTCTGCAGCTCATGTTCCACTGGCTTGCAGCACACAGCACTGTGCTTTCCCTTTAGA
TGGGAGCCGTCTGTGTGTGGAGCTCCAAGGACCTTCTCACCAGCTTCTCACCTACAAGGACACCAT
CAATTGATTACTGCTGTGGTTTTGGAAATCAAATAGATCCACTTCTCCTCTGCTCTGCATCAGAGGATT
ATATTATAATGTGGAACGTGGCTGAATGCAGAGAGAAGACACTTAAGGGCTGACTCCTCGAGGGACTAT
CCTGGCTCCCTTTTACAACAGTGTGTGTTTGGGATTTAGTCTGGATGATCGTGCTATTGCAGTGTGT
GCTGGAACAAAATATCTGTGATGGATGTGGAAGCAGTCTGTGCTGGTAGAGTTGAAGGCCATCAAG
GCTCAGTGACAGCAGTGGAGTTCTGTCCCTGGCAAGCACACACCCTCATCTGTGTCTGAAGCCGAAG
CTTTAAGGCTGGGACTTTTGTGGGATCCTTGATATACAGTTTATCCATTTTAAACAGTTACCCTCTC
CTAAATTTGCTTATCAATGAAGAAAACCAACAGCTGGTCACCGGCAGTGTGATGGCCAGCTGTGGATCT
TTAGTTTGTAGGGGACATCACTACCCTGTGTGGCAGTGTGGCAGTAAAGGAAGAAAAGGGAGACTTT
CACCACCCGAAGAATGATGGCTGAGCAGTGCAGCCTGCCAGAAGACCATCAGTGCCGGTGCAGACATGAG
CGGATAAAAAGGGGAGAGGCTGAAGCAACATCCCTATCCTGAGCCTGGCGCCTGTGACCTCTGCCTGC
CGGATCCCAGCGTGGAGCTTTTGTCTGAGTGCACCAAATGTCTATGGATTGGAAGCTCAACAGCTCT
ATTCATATTGAACCTGGCAAGCTTTGAATTGGAAGCCGCTTTACACTTCAAGGAATTTAGAGCCTGAGC
GTCCAAGTTGCTGGTGTGCAATGGTGGAGGCCATGAGCGCCAAGGCATTTTGCATGCTTTTAT
CTATGTTTGGGAGTAAGATTGCTGTATTGAAAATTGACTTGGCTGCTCTGCTCAGCACTCAGCAGTACCC
TCGGGAGGAAAGGTGCTTTCTGTGCTGGCAAGCTCCTGTGCTCCTGCCAATTTCCACTGTATTTTGA
ATTATTAAGGAAAATTTCTAAGCTTGCCAATACCAACAACATGCTGTGAAGAGTGTGCTGGAGGACA
GGCCCTGTGTTTTCCACTAAGGTTAGGTCGTCCGGCTATACATTGGCACCACATATGGCTATGTTTTT
TCCAAGACTAACATCAACATCATAACAAAAGATCTTCAAAGTACAAGAACAATTACAAATGTAAGAG
TGCTCTTTGGAGAATTTCTACCCAGAAATCTCAGCAGACAGGTTGCTGTAGCCAGAAAGCCTGTTGCTG
TGAGCTGTCTGCAGTTCTCAGGGGATGGACAGAAGCTGGCCTGTGGCTTAGGTAACCACCTGTCCCTGGT
CTTCAACGCCAGCCTTTAGGACCACCGGCTGCCTTTTCAAGTATGATGGAGCTGTGAGCACTATCTGC
TGGAGCCATGACAAGAGTGGCTGTCTACAGGCCGAGACCGGACACTGAGGGTGTGGTCACTTACACA
GGACAGAACTCATGCTGCTTTTGGCTCCAGATGCTTTTCCCAAGCCAGTAAACATCTGCACAGTTCTACTA
CATGGACACCTTACTACTGCTGTCTTCTGGCCAGAGTTCTGCCTGCTGAAGTACCACATTGACCTCTGT
AGGGATGACATACGAAGGTATAAACCAAAAAGCAGGTATAAGCCTATTTTCAAGTTGCCAATGACCAGTG
GGGCGGACATAACCAGCCTGTGAGCGGTGAACGACTTTTATCCACATCGTCTCACAGCTGGCCGCGA
CCGGGCTGTTGAAGTTTTGACCTCAATGCTGGCTGCAGCGCTGCAGTGTGCTGAAAGTCCATTCCAGG
CCTGTTTATCGAATTTGTCAAATAAAGGATCATCCTTTGTAGCCAGCATTCCCTGGCATATAATCTTT
TCCTGACGGCAGCTGTTGGTATGGGATTCGACTGTGGGACTTGAGGAAGTGGGCTTATGTGATGAA
ATGGGCTCCAGCAGCTTTGACCCGCTTGCAGGACACACAGATACGATTACTGAAGTGGCCTTCAACC
CAGCAGCTCCTCAGCTTGTACAGCCACT

ACGCGTACGCGGCCGCTCGAG - GFP Tag - GTTTAA

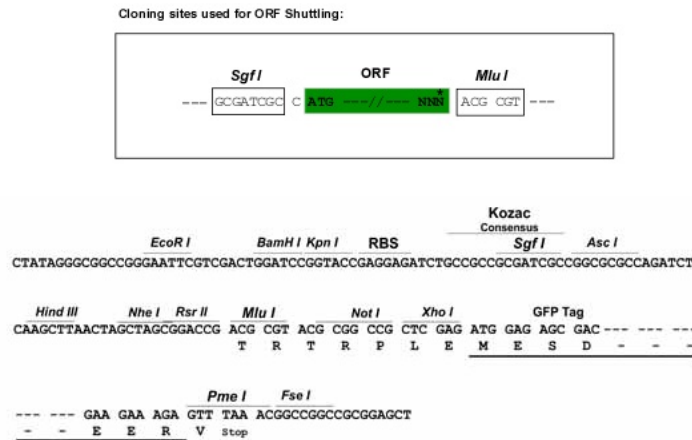
Protein Sequence: >MG215852 representing NM_175173
 Red=Cloning site Green=Tags(s)

METPPEMPSTDGHTRAIIVTERIVVVEKSKSAAHVPLACSTQHCAFPDGSRLCVWSSKDPHQHLLTLQGH
 QLITAVVFGNQIDPLLLCSASEDYIIMWVAEAREKTLKGLTPRGITLGSLLQTVLCLRFSLDDRAIACV
 AGNKISVMDVEKQSVLVELKGHQGSVTAVEFCPWQAHTLISVSEDRSFKVWDFCVGSLIYSSSILTAYPL
 LNLLINEENQQLVTGSADGQLWIFSLMEGHHYHCVAHVDRKKRETFTRRMMAEQCSLPEDHQCRCRHE
 ADKRGAEAEATFPILSLAPCDLCLPDSQRGAFASECTKCLWIGSSTALFILNLASFEEAALHFKEFQSL
 VQVAGSCAMVSEPMSEKAFKMLSSMFGSKIIVLEIDLAAALLSTQYPRAGKVLVLAASSCVLPTSPLYFG
 IIEKEFPKLANTKQHAVKSVVEDRPLVVFHTKVRSSGYTLAPHMAMFSPKTNIKHHNRSSKYKNYKCKE
 CSLENFLPRNLSRQVAVAQKPVAVSCLQFSGDGQKLACGLGNHLSLVFNASLSGPPAAFSGHDGAVSTIC
 WSHDKRWLLSTGRDRTL RVWSVHRTEMLLLAPDAFPKPVTSAQFYMDTFILLSSGPEFCLLKHYIDL
 RDDIRRYKPKSRYKPIFRPMTSGADITLSAVNDFYSHIVLTAGRDRAVEVFDLNAGCSAAVLAEVHSR
 PVHRIQCQNGSSFVAQHSLAYNLFLLAAVGDGIRLWDLRNLRLMCMKWAPAAFCTVLQDTQIRLLKWPST
 QLLLSLQPP

TRTRPLE - GFP Tag - V

Restriction Sites: SgfI-MluI

Cloning Scheme:



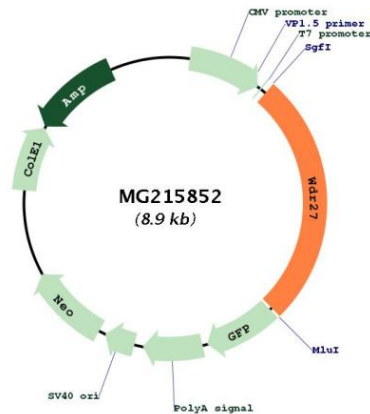
ACCN: NM_175173

ORF Size: 2340 bp

OTI Disclaimer: The molecular sequence of this clone aligns with the gene accession number as a point of reference only. However, individual transcript sequences of the same gene can differ through naturally occurring variations (e.g. polymorphisms), each with its own valid existence. This clone is substantially in agreement with the reference, but a complete review of all prevailing variants is recommended prior to use. [More info](#)

OTI Annotation: This clone was engineered to express the complete ORF with an expression tag. Expression varies depending on the nature of the gene.

Components:	The ORF clone is ion-exchange column purified and shipped in a 2D barcoded Matrix tube containing 10ug of transfection-ready, dried plasmid DNA (reconstitute with 100 ul of water).
Reconstitution Method:	<ol style="list-style-type: none">1. Centrifuge at 5,000xg for 5min.2. Carefully open the tube and add 100ul of sterile water to dissolve the DNA.3. Close the tube and incubate for 10 minutes at room temperature.4. Briefly vortex the tube and then do a quick spin (less than 5000xg) to concentrate the liquid at the bottom.5. Store the suspended plasmid at -20°C. The DNA is stable for at least one year from date of shipping when stored at -20°C.
Note:	Plasmids are not sterile. For experiments where strict sterility is required, filtration with 0.22um filter is required.
RefSeq:	NM_175173.3 , NP_780382.2
RefSeq Size:	2759 bp
RefSeq ORF:	2343 bp
Locus ID:	71682
UniProt ID:	Q8C5V5
Cytogenetics:	17 A2

Product images:

Circular map for MG215852