

Product datasheet for **MG215843**

Ssh2 (NM_177710) Mouse Tagged ORF Clone

Product data:

Product Type:	Expression Plasmids
Product Name:	Ssh2 (NM_177710) Mouse Tagged ORF Clone
Tag:	TurboGFP
Symbol:	Ssh2
Synonyms:	mSSH-2L; SSH-2; SSH-2L
Mammalian Cell Selection:	Neomycin
Vector:	pCMV6-AC-GFP (PS100010)
E. coli Selection:	Ampicillin (100 ug/mL)
ORF Nucleotide Sequence:	>MG215843 representing NM_177710 Red=Cloning site Blue=ORF Green=Tags(s)

TTTTGTAATACGACTCACTATAGGGCGGCCGGAATTCGTCGACTGGATCCGGTACCGAGGAGATCTGCC
GCC**CGATCGCC**

ATGGCTTTGGTCACGGTCCAGCGGTGCGCTACCCACAGCACCTCCAGCCCTTGCCTCGGAGGCCG
ACAGTGGGAGGAGGAATGCCGGTCACAGCCAGAAGCATCAGCGAGAGCTTCTAACTGTCAAAGGTGC
TGCCCTTTTCTACCACGAGGGAATGGCTCGTCTACACCAAGAGTCAGCCACAGACGCAACAAGCATGCA
GGTGATCTCCAACAGCATCTTCAAGCAATGTTTCATATTACTCCGCCAGAAGACAACATAAGGCTGGCTG
TAAGACTGAAAAGTACTTACAAAACCGAACACGCTATATGGTCGTGGTTTCAACTAATGGTAGACAAGA
CACTGAAGAAAGCATTGTCCTGGGAATGGATTTTCTTCTAATGACAGTAGCACTTGTACCATGGGCTTG
GTCTTGCCTCTCTGGAGTGACACCCTAATTCATTTGGATGGTGGTGGTTTCAGCGTATCAACAGATA
ACAGAGTTCACATATTCAAACCTGTATCTGTGCAAGCAATGTGGTCTGCACTACAGAGTTTGACAAGGC
TTGTGAAGTGGCCAGAATGCATAACTACTATCCAGGCAGCCTTTTCTCACTTGGGTGAGTTATTACGAG
AGCCATATCAACTCAGATCAGTCTCAGTCAATGAGTGGAAATGCTATGCAGGATGTGAGTCTCATCGGC
CTGACTCTCCAGCCCTTTCACAGACATACCAACTGAACGTGAGCGAACAGAAAGGCTTATTAAGACTAA
ATTAAGGGAGATCATGATGCAAAAAGGATTTGGAGAATATCACCTCAAAGAGATACGCACGGAGCTGGAG
ATGCAGATGGTGTGCACTTGCAGAAATTAAGGAATTCATAGATAATGAAATGATCGTGATCCTTGGTC
AGATGGACAGTCCACACAGATATTTGAGCATGTATTCTGGGCTCAGAATGGAATGCCTCGAACTTAGA
GGACTTGCAGAACCAGGGGTACGGTATATCTTGAATGTTACTCGAGAGATAGATAAATCTTCCCTGGA
GTCTTTGAGTATCATAACATTTCGAGTATATGATGAAGAAGCAACAGATCTCCTGGCTTACTGGAATGACA
CTTACAAATTCATCTCTAAAGCAAAGAAACATGGATCTAAATGTCTTGTGCACTGCAAAAATGGGGGTGAG
TCGCTCAGCCTCCACTGTGATTGCCTATGCAATGAAGGAGTATGGATGGAATCTGGATCGAGCCTATGAC
TATGTGAAGGAAAGACGAACGGTGACCAAGCCTAACCCAGCTTCATGAGACAACGGAAGAATACCAAG
GGATCTTGCTGGCCAGCAACAGCGGCATAACAACTCTGGAGATCTCATTGAGATAGTGACCTTTCAGA
CCACCAGAACCCATCTGTAACCTGGGCTCGAGCTCAACAAGAAGGAGATGACCACGTGACGAGACCAG



ATCGCTGAGGTGAAGACTGTGGAGAACCTTGCTGCCATGCCTACCGTCTTTATGGAACATGTGGTCCCAC
AAGATGCAAAATCAGAAAGGACTACACACCAAAGAAAGAGTCATCTGCTTGGAGTTTTCTTACAAGAGTT
TCGTGCCGGACAGATTGAAGATGAATTAATTAATGACATCAATGGATGCTCATCAGGGTGTGTCTC
AGTGAATCAAACTCCCTCTTGACAACCTGCCATGCGTCTAAAGCCTTACTCCAACCTGGACAGGCCCCAG
ACATTGCCAACAGTTCCAGACTTAGCTGTGGAAGATCTGGAGACAGACGCACTGAAAGCAGACATGAA
TGTCACCTACTGCCAATGGAAGAGTTGACATCTCGACTGAAAGACCTCCCATGTCACCTGATCTGGAG
TCACCAAGCCCCAAGCCAGTTGCCAAGTGCATCTCAGATTTTAGTACAGATCGTATTGACTTTTTTA
GTGCCCTGGAGAAATTTGTAGAGCTTTCTCAAGAAACCCGGTCTCGGTCTTTTTCTCACTCAAGGATAGA
AGAATTAGGTGGAGGAAGGAGTGAGGGCTGTCGTTTTGTCAGTGATAGAAGTGGCAGCTTCAGAAATGGCA
GCTGATGACCAGAGAAGCAGCTCTTTGAGTAATACGCCCCACGCCTCTGAAGAGTCTTCTGTGGATGAGG
ACCAGTCGAAGGCAATCACCGAACTTGTGAGCCAGACATCATCATGCAATCTCACTCAGAAAATGCAAT
TTCAGTCAAAGAAATTTGACTGAAATTTAGTCCATTAGTCAAGGAGTTGGGCAGTTTCAGTTAAAAGGA
GACATCTCTCTAACCCATGCCACACCAAAGAAGAGCACCATTATGAGCTGCCCTGGAGAGGGTGC
CAGCCCCGTGAGAGCAAACCTGGACATTGGGAGCAGGATGAGAGTTTCTGTAGTGTCCAGCCAGAAGTGC
TAGAGACTCAGGGAAGTGTGCCCGGAGGAAGGCTGTCTGACCACACACTCATCCACAGCAGACTTGGAA
GAAGAAGAACCAGTTGAGGGGGAACATGACTGGGGCCAGGGATGCACTCTGGTGCTAAGTGGTGCCTG
GGTCTGTGAGGGCAGCCACCCTGGAGTTTGAAGAGCGCTTGCACAAGAGCAAGAGAACCATGGTACAGC
CTCTGCAGGCCCCACATTATCCAATCGCAAAAACCTCTAAGAATGATTCTTCTGTGGCAGACTTAATGCCA
AAATGGAAAAGTGATGAAACTACCCAGAACATTCATTTTTCTCAAAGAAGCCGAGCCGAGCAAGGGTA
AAGGGAATGCAGTGGTCTGAAGCCGGATCACTATCCCAGTGTGAGCGTAATCCACCATGCCAGACTG
TGAGCTGCTGGAGCATATTCTTCCGGCTCCTCAGGACTGCCTAGGGTCAAGTAGTGAAGTAAGAAG
CAGGAAGGAGACCTAAAGAAGCAGAGGGCTGTGGTTCAAACAGGAATGTGACACACAGGCCATCTTTC
TCCCCCTCCCAAGAAAATAGAAATCATTGAGTATACGCCGACAGTTACATCACTGGGTACACCCGAGCC
AGGAGGTGAGGCCACCCAGCAAAGAGGGTGAGAAACAAGGACTGAGGAAAGTGAAGATGGAGCAGTCT
ATCACTATGTTTTGTGCGCTGGATGAAAATCTGAACAGGACTCTGGAGCCAGTCAAGTTTCTCTGCATC
CCCAAGTGTACCTCTGCCTCATTCTTCTCAGAGTGTGACAGGCCCGCTGACCCAAACCCTATGTTAAG
TAGCCCGCAAGACAAAGGGGACTGCCATCCACACCCTTCAAGACAGCAGCACCTTTTGTGAGTGCAGT
ACCCAGGGAGCATCTTTCAGCTTGGATTATTTGCTTCCCAGTCTGTGGTTCACCTGGAAGGCTGCACAG
AGCAAAGCAGTGCCTGACAATGAACTGTCTCCAGAGCAGGCTAGCTGGGAGGACAGCCGGGGCATT
CCTCTCCAGTGGTAGTGAATGGCACACACATCTCCCAATTAACGAAGACCTAAGTTAATTAAC
AAACTTGGTGACAGTGTGGTGTGTACAGAAAAACTGGACCCGTACCTGAAGCTGTAGAATCCCAC
ATAGCTCTAGTAGTGAATAAAGAGATCTCAGCCACAGCCGGTGGTGTGGTGAAGGAGCATGCTAAAGA
AATTGAGTCTCGAGTGATCTCCAGGCAGGTTTTCCAAAACATCCCAAATGAAGCGCTCAGCTTCCTT
GCCAAGTTGGGTTACCTGGACCTTTGTAAGACTACTTACCAGATAGAGAGCTTGTCTCCTCAGAATCCC
CTCATCTCAAATTTGCTTCCAGCCCTTCTCAGAACAGACTCAGGCATGCATGCCTTGTGGCCATGAGCC
CTCAGAAAGCGCAGGTGCCAGCAGAACCCACAGCCCAAGTATTCTGTAGAGCAACTCAAACATCA
GAGTGTATTGTGACAGCAAACAGTGGAGAGGCCAGTGTGCAGTATGCCAAAGAGTTTGGTTACAGTC
AGCAGTGTGCTCCCAAGGCAAGACCAGAATTGACTAGTCTGAAGGAGGCCCTTCTTTGCTACAGAC
ACAGGGTCTGCAGTACACAGGCCCTCTCCAGGGCTGGCTGTGGGCCCCCGTCAGCAACATGGCAGAAGT
CACCCCTTAGAAGACTGAAAAGAGCAAATGATAAAAAACGGACAACCAACCCTTCTATAACACCATG

ACGCGTACGCGGCCGCTCGAG - GFP Tag - GTTTAA

Protein Sequence: >MG215843 representing NM_177710
 Red=Cloning site Green=Tags(s)

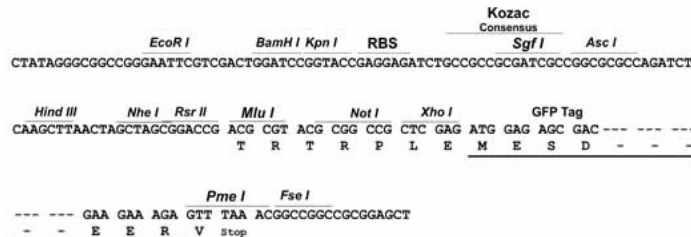
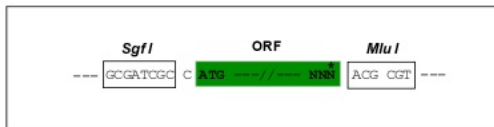
MALVTVQRSPTPTTSSPCASEADSGEEECRSQPRISSESFLT VKGAALFLPRNGSSTPRVSHRRNKHA
 GDLOQHLQAMFILLRPEDNIRLAVRLESTYQNRTRYM VVSTNGRQDTEESIVLGMDFSSNDSSTCTMGL
 VLPLWSDTLIHL DGDGGF SVSTDNRVHIFKPVSVQAMWSALQSLHKACEVARMHNYYPGSLFLT WVSYYE
 SHINSDQSSVNEWNAMQDVQSHRPDSPALFTDIPTERERTERLIKTKLREIMMQKDLENITSKEIRTELE
 MQMVCNLR EFKEFIDNEMIVILGQMDSPQTQIFEHVFLGSEWNASNLEDLQNRGVRYILNVTREIDNFFPG
 VFEYHNI R VYDEEATDLLAYWNDTYKFISKAKKHGSKCLVHCKMGVSRASSTVIAYAMKEYGWNLD RAYD
 YVKERRTVTKPNPSFMRQLEEYQGILLASKQRHNKLRSHSDSDLSDHHEPICPGLELNKEMTT SADQ
 IAEVKTVENLAAMPTVFMHVVPQDANQKGLHTKERVICLEFSSQEFRAQIEDELNLNDINGCSSGCCCL
 SESKLPDNC HASKALLQPGQAPDIANKFPDLAVEDLET DALKADMNVHLLPMEELTSRLKDLPMSPDLE
 SPSPQASCQAAISDFSTDRIDFFSALEKFVELSQETRSRFSHRSRIEELGGGRSEGCRLSVIEVAASEMA
 ADDQRSSSLNTPHASEESSVDEDQSKAITELVSPDIIMQSHSENAISVKEIVTEIESISQGVGVQLKG
 DILSNPCHTPKKSTIHELPLERVPAPESKPGHWEQDESFCSVQPELARDSGKCAPEEGCLTTHSSTADLE
 EEEPVEGEHDWGP MHS GAKWCPG SVRRATLEFEERLRQEQENHGTASAGPTLSNRKNSKNDS SVADLMP
 KWKSDETTP EHSFFLKEAEP SKGKGC SGSEAGSLSHCERNPTMPDCELL EHHSLPAPQDCLGSDSRSKK
 QEGDLKKQRAVVPNQECDQA ILLPLPKKIEIEI EYTPVTSLGHTEPGGEATPSKEGEKQGLRKVKMEQS
 ITMFCALDENLNR TLEPSQVSLHPQVLP LPHSSSECDR PADPNPMLSSPQDKGDCPSTPFKTAAPFVSCS
 TQGASFSLDYLLPHSVVHLEGCTEQSSATDNEL SPEQASWEDSRGHFLSSGSGMAHTSSPLTNE DLSL IN
 KLGDSVGLVQKLDPSPEACRIPHSSSENIRDLSHSRGVVKEHAKIE SRVIFQAGFSKTSQMKRASL
 AKLGYLDLCKDYLPDRELVSSESPHLKLLQPFLRTDSGMHALMAHEPSESAGAQQNPQPTKYSVEQLKTS
 ECIVQSKPVERPSVQYAK EFGYSQQCLLPKARPELTSSEGGPLLLQTQGLQYTGPSPLAVAPRQQHGRT
 HPLRRLKRANDKKRTTNP FYNTM

TRTRPLE - GFP Tag - V

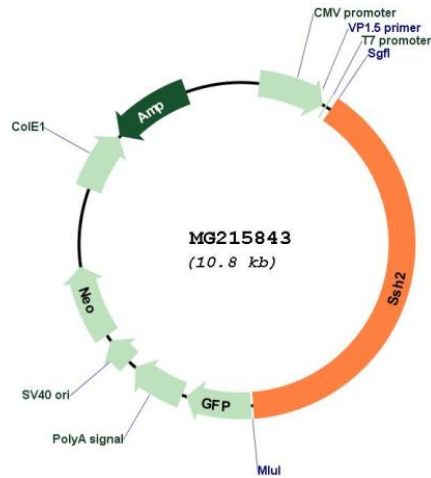
Restriction Sites: SgfI-MluI

Cloning Scheme:

Cloning sites used for ORF Shutting:



Plasmid Map:



ACCN: NM_177710

ORF Size: 4269 bp

OTI Disclaimer: The molecular sequence of this clone aligns with the gene accession number as a point of reference only. However, individual transcript sequences of the same gene can differ through naturally occurring variations (e.g. polymorphisms), each with its own valid existence. This clone is substantially in agreement with the reference, but a complete review of all prevailing variants is recommended prior to use. [More info](#)

OTI Annotation: This clone was engineered to express the complete ORF with an expression tag. Expression varies depending on the nature of the gene.

Components: The ORF clone is ion-exchange column purified and shipped in a 2D barcoded Matrix tube containing 10ug of transfection-ready, dried plasmid DNA (reconstitute with 100 ul of water).

Reconstitution Method:

1. Centrifuge at 5,000xg for 5min.
2. Carefully open the tube and add 100ul of sterile water to dissolve the DNA.
3. Close the tube and incubate for 10 minutes at room temperature.
4. Briefly vortex the tube and then do a quick spin (less than 5000xg) to concentrate the liquid at the bottom.
5. Store the suspended plasmid at -20°C. The DNA is stable for at least one year from date of shipping when stored at -20°C.

RefSeq: [NM_177710.4](#), [NP_808378.2](#)

RefSeq Size: 9040 bp

RefSeq ORF: 4272 bp

Locus ID: 237860

UniProt ID: [Q5SW75](#)

Cytogenetics: 11 B5

Gene Summary: Protein phosphatase which regulates actin filament dynamics. Dephosphorylates and activates the actin binding/depolymerizing factor cofilin, which subsequently binds to actin filaments and stimulates their disassembly. Inhibitory phosphorylation of cofilin is mediated by LIMK1, which may also be dephosphorylated and inactivated by this protein.
[UniProtKB/Swiss-Prot Function]