

Product datasheet for **MG215835**

Mtmr7 (NM_001040699) Mouse Tagged ORF Clone

Product data:

Product Type:	Expression Plasmids
Product Name:	Mtmr7 (NM_001040699) Mouse Tagged ORF Clone
Tag:	TurboGFP
Symbol:	Mtmr7
Mammalian Cell Selection:	Neomycin
Vector:	pCMV6-AC-GFP (PS100010)
E. coli Selection:	Ampicillin (100 ug/mL)



[View online »](#)

ORF Nucleotide
Sequence:

>MG215835 representing NM_001040699
Red=Cloning site Blue=ORF Green=Tags(s)

TTTTGTAATACGACTCACTATAGGGCGGCCGGGAATTCGTCGACTGGATCCGGTACCGAGGAGATCTGCC
GCCGCGATCGCC

ATGGAGCACATCCGCACGCCAAGTTGAAAACGTGCGCTTGGTAGACAGAGTGTCTTGTAAAAAGGCAG
CGCTGGGAACTTTGTATCTGACGGCCACTCACGTCATATTCGTGGAAAATGCACCTGACACAAGAAAAGA
AACCTGGATTCTGCACAGTCAGATCTCCACCATTGAAAAGCAGGGCACAACAGCTACGGGCTGCCCTCTG
CTTATTCGCTGCAAGAACTTCCAGATCGTACAACCTTGTCACTCCACAGGAGAGAGACTGCCACGACGTGT
ACATCTCTCTGATACGCCTTGCACGGCCAGTGAAGTACGAGGAGCTATACTGCTTTTCTTCAACCCCAA
GCTGGATAAGGAAGAACGGGAGCAGGGCTGTTGCTGTTGACCTTAGTGAAGAATAACAAGCAATGGGC
CTCCCTGATAATTATTGGCAGCTCAGCGATGTGAATAGAGACTACAGAGTTTGTGACTCTTACCCACGG
AACTGTACGTCCCAGATCGGCCACGGCACACATCATCGTGGCAGCTCCAAGTTCGGAGCAGACGGCG
ATTTCTGCCCTTCTACTACTGTAAGACAGCCATGCCTCCATCTGCAGGAGCAGCCAGCCCTTTCC
GGCTTCAGCGCTCGGTGCCTGGAGGATGAGCAGATGCTCCAAGCCATCAGGAAAGCCAATCCTGGAAGT
ACTTCATTTATGTCGTGGACACAAGGCCTAAACTTAATGCGATGGCAAATCGTGTGCAGGGAAAGGCTA
TGAGAATGAAGACAATTATTCGAATCAAGTTTCACTTATCGGCATAGAGAACATCCACGTATGAGG
AACAGTCTTCAGAAAATGCTGGAAGTGTGTGAACCTAAATCTCCCTCTATGAGTGATTTCTGTGGGGAC
TGGAGAACTCAGGCTGGCTGAGGCACATCAAAGCCATCATGGATGCAGGGATCTTCATTGCAAAGGCAGT
TTCAGAGGAAGGGCAAGTGTGCTTGTCTACTGTTCTGACGGCTGGGACAGAACGGCCAGGTGTGCTCG
GTGGTAGCCTGCTGCTGGACCCTTACTACCGGACTCTGAAAGGATTCATGGTATTAATTGAAAAGGACT
GGATTTCTTCGGACATAAATTTAATCATAGATATGGCAACTTAGATGGTGACCCAAAAGAAATCTCTCC
AGTAATCGACCAGTTCATTGAGTGTCTGGCAGCTAACGGAACAGTTCCTTGCCTTTGAGTTCAAC
GAGAGTTTCTGACTCACATTCAGCATCATGTTTATTCTGCCAGTTTGGGAACTTCTGTGTAATAGCC
AGAAGGAGAGGCGAGAATCAAGATTCAAGAAAGAACCTACTCTTGTGGTCCAACCTGTGGAAGAATCG
AGCTGACTACCTCAATCCTCTGTTTAGAGCTGACCACAGTCAGACCCAGGGGAGCCTTCTCTGCCTACA
GCTCCATGCAACTTCACTATAAGTTTTGGAATGGGATGTATAACCGCTTTGAAAAGGGTTGCAGCCTC
GACAGTCTGTTACAGATTACCTCATGGCTGTGAAGGAGGAGTCCCAGCAGCTGGAGGAAGAACTGGAGTC
CCTAGAAGAAAGGCTGGAAAAAATTCAGAAAGTCCACTTACATGGTACCAAAGTGAAGAGTAAGCAAAGT
GAGCCCAGCAAACACTCGGGTTCTCTACCTCAGACCACAGCACAGCCAACACCCTCAGGATTACAGTG
GGAACAGCAAGTCTTCCATCCAGGAGCCCGTCCCAGGGTATGAAGATTCTGCTCTGATTCTAACCCA
AGACAATTTAAAAAGCTCAGACCCCGACCTCTCAGTGAATAGTGATCAAGAGTCTGGGGTGGAGGATTTG
AGCTGTGATCTCCAGTGGTGGTGGATGCACCCAGCGAAGACAGTGGCAAGGACCGGGACTCGGACG
AAGCTGTGTTTCTCACTGCC

ACGCGTACGCGGCCGCTCGAG - GFP Tag - GTTTAA

Protein Sequence: >MG215835 representing NM_001040699
 Red=Cloning site Green=Tags(s)

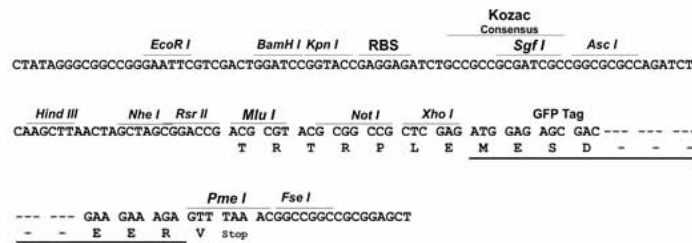
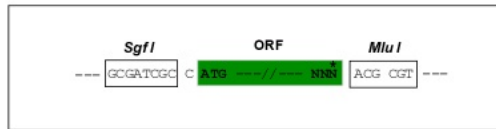
MEHIRTPKVENVRLVDRVSKKAALGTL YLTATHVIFVENAPDTRKETWILHSQISTIEKQATTATGCPL
 LIRCKNFQIVQLVIPQERDCHDVYISLIRLARPVKYEEL YCF SFNPKLDKEEREQGWLLVDLSEEYKRMG
 LPDNYWQLSDVNRDYRVCD SYPTEL YVPRSATAHIIVGSSKFRSRRRFPALSYCKDASHASICRSSQPLS
 GFSARCLEDEQMLQAIRKANPGSDFIYVVDTRPKLNAMANRAAGKGYENEDNYSNIKFFQFIGIENIHVMR
 NSLQKMLEVCELKSPMSDFLWGLENSGWL RHIKAIMDAGFIAKAVSEEGASVLVHCSDGWDRTAQVCS
 VASLLLDPPYRRTLKGFMLIEKDWISFGHKFNHRYGNLDGDPKEI SPVIDQFIECVWQLTEQFPCAFEN
 ERFLTHIQHHVYSCQFGNFLCNSQKERRELKIQERTYSLWSNLWKNRADYLNPLFRADHSQTQGSLLHPT
 APCNFTYKFWNGMYNRFKGLQPRQSVTDYLMAYKEESQQL EEELESLERLEKIQKVLHGHGTVKSKQS
 EPSKHSGFSTSDHSTANTPDYSGNSKSFSPSRSPSQGDEDSALILTQDNLKSSDPDL SVNSDQESGVEDL
 SCRSPSGGEHAPSEDSGKDRDSDEAVFLTA

TRTRPLE - GFP Tag - V

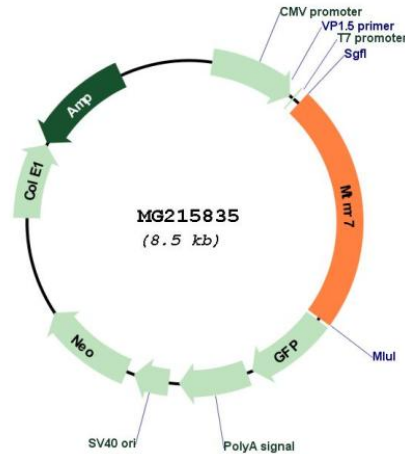
Restriction Sites: SgfI-MluI

Cloning Scheme:

Cloning sites used for ORF Shuttling:



Plasmid Map:



ACCN: NM_001040699

ORF Size: 1980 bp

OTI Disclaimer: The molecular sequence of this clone aligns with the gene accession number as a point of reference only. However, individual transcript sequences of the same gene can differ through naturally occurring variations (e.g. polymorphisms), each with its own valid existence. This clone is substantially in agreement with the reference, but a complete review of all prevailing variants is recommended prior to use. [More info](#)

OTI Annotation: This clone was engineered to express the complete ORF with an expression tag. Expression varies depending on the nature of the gene.

Components: The ORF clone is ion-exchange column purified and shipped in a 2D barcoded Matrix tube containing 10ug of transfection-ready, dried plasmid DNA (reconstitute with 100 ul of water).

Reconstitution Method:

1. Centrifuge at 5,000xg for 5min.
2. Carefully open the tube and add 100ul of sterile water to dissolve the DNA.
3. Close the tube and incubate for 10 minutes at room temperature.
4. Briefly vortex the tube and then do a quick spin (less than 5000xg) to concentrate the liquid at the bottom.
5. Store the suspended plasmid at -20°C. The DNA is stable for at least one year from date of shipping when stored at -20°C.

RefSeq: [NM_001040699.1](#), [NP_001035789.1](#)
RefSeq Size: 3446 bp
RefSeq ORF: 1983 bp
Locus ID: 54384
UniProt ID: [Q9Z2C9](#)
Cytogenetics: 8 A4
Gene Summary: Phosphatase that specifically dephosphorylates phosphatidylinositol 3-phosphate (PtdIns(3)P) and inositol 1,3-bisphosphate (Ins(1,3)P2).[UniProtKB/Swiss-Prot Function]