

## Product datasheet for **MG215818**

### **Klh11 (NM\_172565) Mouse Tagged ORF Clone**

#### **Product data:**

Product Type:	Expression Plasmids
Product Name:	Klh11 (NM_172565) Mouse Tagged ORF Clone
Tag:	TurboGFP
Symbol:	Klh11
Synonyms:	BC011167
Mammalian Cell Selection:	Neomycin
Vector:	pCMV6-AC-GFP (PS100010)
E. coli Selection:	Ampicillin (100 ug/mL)



[View online »](#)

**ORF Nucleotide Sequence:**

>MG215818 representing NM\_172565  
 Red=Cloning site Blue=ORF Green=Tags(s)

TTTTGTAATACGACTCACTATAGGGCGGCCGGAATTCGTCGACTGGATCCGGTACCGAGGAGATCTGCC  
 GCC**CGCATCGCC**

ATGGCGCGGCTGTGGCGCGGCAGCTGCCGCTGCGGCCGCGGCTGCATCTTTTCAAGTCTGGAGATGG  
 AGAGCATGGAGACTGCCGTCGCCGTTCCGCGAGCCTGGCCGCTGAGGTCAGGAGGAGTGGCACGGTAGA  
 CTTCTGACCGGGGCGGCATCTCTACCCTCGTCGACACGGCGGGAGCGATCCGGGCCAGAGGCCGAG  
 GACTTCGAGTGCAGCACTCACTGCTCCGAGTTGTCTGCGCGCAGAACGAGCAGCGGCGTCAAGGCTGT  
 TCTGCGACATCACCTGTGCTTCGGCGGGGCCGAGGTCGCGAGTCCGTGCCACCGCTCGGTGCTGGC  
 CGTGCCACCGAGTACTCACGCCCTTACTCTCGGGTCAGTTTTTCGGAATCGCGCTCGGGCCGGGTGGAG  
 ATGCGCAAGTGGAGCTCAGAGCCCGACCCGAACCTGACACGGTGAAGCCGTTATCGAGTACATGTACA  
 CCGGCCGCATCCGAGTGAGCACCGCAGCGTGCACGAGGTGCTGGAGCTGGCCGACAGATTTCTATTAAT  
 TCGTTTAAAAGAATTCTGTGGAGAATTTCTCAAGAAAAAATTCTCTCGAATTGTGTGCCATTTCAT  
 AGCTTAGCCACATGTATACCCTGAGCCAGCTTGTCTGAAAGCTGCAGATATGATACGGAGAAATTTCT  
 ATAAAGTCATTACAGGATGAGGAATTTTACACTTTACCTTTCCATCTCATTCCGGGACTGGCTTTCCGACT  
 GGAAATCACTGTGGATTCTGAAGAGGTTCTTTTGAACAGTTTTTGAAGTGGGTTTCAGAGAAATGCAGAA  
 GAGAGAGAGATACTTTGAAGAGCTTTTAAATTTGCTCAGATTGCCCAGATGAAACCCACCTACCTTA  
 CACGGCATGTCAAACAGAGCGGCTAGTGGCCAATAATGAAGTTTGTGTCAAGCTGGTGGCAGAAGCAGT  
 GGAGAGGCATGCGCTCAGAGCAGAGAATACAGTCTGGCACATTGCAGCAGCCCACTTCAAGTCTCA  
 CTGTTACCTCGCTATGGACAAAACATGGACGTAATCATGGTTATCGGAGGAGTGTGGAAGGAGGAGACT  
 ACTTAAGTGAATGTGTGGATATTTTGTGATGAGGATAGTGGGTCAATCTGCCCCACATTCATAACCA  
 CCTTGATGGACATGCCGTCGCAATTACAGAGTCCTACGTGTATGTTGCTGGCTCCATGGAACCCAGGTTTT  
 GCTAAAACGTGGAAAGATACAACCCAAACCTGAATACATGGAACATGTTTGTAGTCTGATGACCAGAA  
 AGCACTCTTTGGGCTAACAGAAGTCAAAGGGAAGCTGTATAGCATTGGAGGACACGGCAATTTTAGCCC  
 TGGCTTTAAAGACGTGACTGTTTACAATCCCGAGCTTGATAAATGGCACAACTTAGAGTCAGCACCAAAG  
 ATTCTGCGAGATGTCAAAGCATTAGCCATTGAGGACCGGTTTGTGTACATTGCTGCCCGCACGCCGTGG  
 ACCGGGACACTGAGGATGGACTGAAGGCTGAATTAATTGCTATGATACAGAGACTCGACAGTGGCAAGA  
 TGTGGAATCTTACCCTATTGACAATACTGTTTTTCCAGATGTCTGTGGTCAATTCAACTTTTAT  
 CAGACAGCATCATGCTGTCCCAAGATTACTCCTTAGAAAATGAAGAAGCAGTAAGAAAAATGCCGGTC  
 AGGTGTCTGATGATACCTTGAAGCTTGCCTCCAGAAGTCTAAGCATCGAAGGAGCAGCCATTTGCTA  
 TTACAGAGATGATGTCTTCATTATTGGAGGCTGGAAAAACAGTATGATATTGACAAACAGTACAGGAAA  
 GAGGCCTACCGATACTGTGCTGAGAGAAAGAGGTGGATGCTCCTTCTCCAATGCCTCAGCCCCGCTGCA  
 GGGCCACTGCTTGCCATGTCAGGATCCCTTACCGTACTTACATGGCACACAGAGATACCCCATGCCTCA  
 AAATTTAATGTGGCAGAAGGACCGCATCCGACAGATGCAAGAGATACATCGGCACGCCCTGAACATGCGG  
 AGAGTGCCAAGTCCCAGATTGAATGC

**ACGCGT**ACGCGGCCGCTCGAG - GFP Tag - GTTTAA

**Protein Sequence:** >MG215818 representing NM\_172565  
 Red=Cloning site Green=Tags(s)

MAAAVAAAAAAAAAASFQVLEMESMETAVAGSASLAAEVRSGTVDFVTGAGISTLVDTGGSDPGPEAE  
 DFECSTHCSEL SWRQNEQRRQGLFCDITLCFGGAGGREFRAHRSVLAAATEYFTPLL SGQFSESRSGRVE  
 MRKWSSEPGPEPDTVEAVIEYMYTGRIRVSTGVSHEVLELADRFL LIRLKEFCGEFLK LKHL S NCVAIH  
 SLAHMYTL SQLALKAADMIRRNFKYKVIQDEEFYTL PFHL IRDWLSDLEITVDSEEVLFETVLK WQQRNAE  
 ERERYFEELFKLLRLSQMKPTYL TRHVKPERLVANNEVCV KLVAE AVERHALRAENIQSGLQQPTSQVS  
 LLPRYQNM DVIMVIGGVSEGGDYLSECVGYFVDEDRWVNLPHIHNHLDGHAVAITESYVYVAGSMEPGF  
 AKTVERYPNPNLNTWEHVCSLMTRKHSFGLTEVKGKLYSIGGHGNFSPGFKDVTVYNPEL DKWHNLESAPK  
 ILRDVKALAIEDRFVYIAARTPVDRDTE DGLKAVITCYDTE TRQWQDVESLPLIDNYCFFQMSVNSNFY  
 QTASCCPKSYSL ENEEAVRKIAGQVSDEILESLPPEVLSIEGAAICYRDDVFIIGGWKNSDDIDKQYRK  
 EAYRYCAERKRWMLLPMPQPCRATACHVRIPYRYLHGTQRYPMPQNL MWQKDRIRQM QEIHRHALNMR  
 RVPSSQIEC

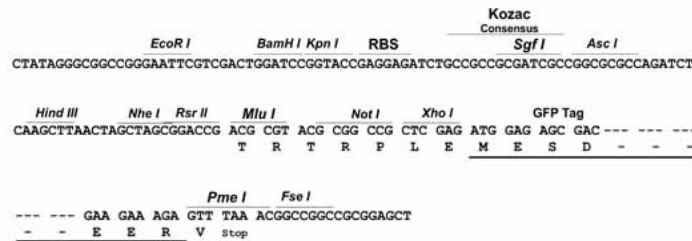
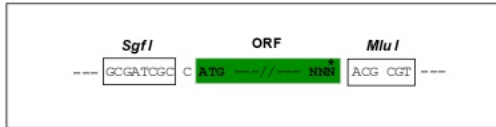
TRTRPLE - GFP Tag - V

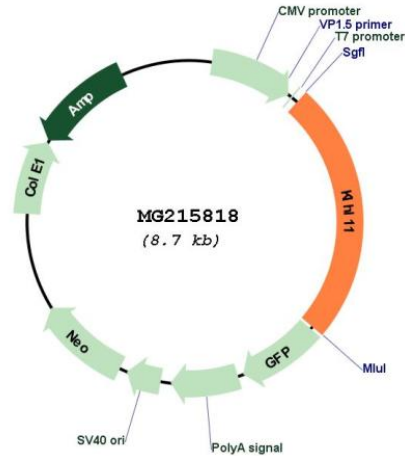
**Restriction Sites:**

SgfI-MluI

**Cloning Scheme:**

Cloning sites used for ORF Shutting:



**Plasmid Map:**


**ACCN:** NM\_172565

**ORF Size:** 2127 bp

**OTI Disclaimer:** The molecular sequence of this clone aligns with the gene accession number as a point of reference only. However, individual transcript sequences of the same gene can differ through naturally occurring variations (e.g. polymorphisms), each with its own valid existence. This clone is substantially in agreement with the reference, but a complete review of all prevailing variants is recommended prior to use. [More info](#)

**OTI Annotation:** This clone was engineered to express the complete ORF with an expression tag. Expression varies depending on the nature of the gene.

**Components:** The ORF clone is ion-exchange column purified and shipped in a 2D barcoded Matrix tube containing 10ug of transfection-ready, dried plasmid DNA (reconstitute with 100 ul of water).

**Reconstitution Method:**

1. Centrifuge at 5,000xg for 5min.
2. Carefully open the tube and add 100ul of sterile water to dissolve the DNA.
3. Close the tube and incubate for 10 minutes at room temperature.
4. Briefly vortex the tube and then do a quick spin (less than 5000xg) to concentrate the liquid at the bottom.
5. Store the suspended plasmid at -20°C. The DNA is stable for at least one year from date of shipping when stored at -20°C.

**RefSeq:** [NM\\_172565.2](#), [NP\\_766153.1](#)

**RefSeq Size:** 2436 bp

**RefSeq ORF:** 2130 bp

Locus ID: 217194

UniProt ID: [Q8CE33](#)

Cytogenetics: 11 D

Gene Summary: Component of a cullin-RING-based BCR (BTB-CUL3-RBX1) E3 ubiquitin-protein ligase complex that mediates the ubiquitination of target proteins, leading most often to their proteasomal degradation.[UniProtKB/Swiss-Prot Function]