

## Product datasheet for **MG215815**

### Gk5 (NM\_177352) Mouse Tagged ORF Clone

#### Product data:

Product Type:	Expression Plasmids
Product Name:	Gk5 (NM_177352) Mouse Tagged ORF Clone
Tag:	TurboGFP
Symbol:	Gk5
Synonyms:	AV095337; C330018K18Rik; G630067D24Rik
Mammalian Cell Selection:	Neomycin
Vector:	pCMV6-AC-GFP (PS100010)
E. coli Selection:	Ampicillin (100 ug/mL)



[View online »](#)

**ORF Nucleotide Sequence:**

>MG215815 representing NM\_177352  
 Red=Cloning site Blue=ORF Green=Tags(s)

TTTTGTAATACGACTCACTATAGGGCGGCCGGAATTCGTCGACTGGATCCGGTACCGAGGAGATCTGCC  
 GCC**CGCATCGCC**

ATGTCAGGGCAGCAGGAGCGTGCAGAGCGGCAGCGAGAGGAAGTGAAGCGTTCGGCTCGCCGCCCTCCC  
 GCTTCGTGCTGGGCTGGACGTGGGCAGCACGGTATCCGCTGCCACGTCTATGACCAGACGGCGGAGT  
 GCGAGGCTCCAGCGCGCAGAAGGTAGAAAATGTTACCCTCAACCTGGCTGGGTTGAAATCGATCTGAT  
 TCTCTCTGGGCTCAGTTTGTGCGTAATAAAAGATGCTGTCAAAGCTGCAGGGTGCAGATGAATCAAA  
 TTGTGGTCTTGGCATATCAACACAGAGAGCCACTTTCATTACATGGAACAAGAAAACAGGCCATCATT  
 TCACAACCTCATTAGCTGGCAAGACCTAAGGGCAGCTGAACTTGTAAAGTCTGGAATAATTCTCTCATA  
 ATGAAGCTATTGCATGGGGCCACCCGAGTCCTTCAATTTCTCAGTAGAAGTAAAGTAATGCTAACGGTCA  
 GCCGCTTCAATTTAGCACCCAGCATGCCACCTTAAGATTGACCTGGATTTTACAAAACCTATCTGAGGT  
 GAAAAGGGCAGTTGAAGAAGACAATTGTTGCTTTGGGACGATTGATACCTGGCTGTTATACAAGCTCAG  
 AAAGGTTCTTCTACGCCACGGATTATTCAAATGCCAGCACCACTGGATTTTTGATCCCTATGCGATGC  
 GCTGGAGCAGGCTCATAACCACCATGGTCTCCATCCCCTGTCTATCCTGCCTCCTGTGAAGGATACCAG  
 CTATAATTTGGATCAGTGGATGAGAAGATATTTGGCGTGCTATACCAGTTGTTGCCTTGGTTGGTGAC  
 CAGCAGTCGGCCATGTTTGGAGAGTGTCTTCGAGACGGGAGATGTGAAGCTAACCATGGGAAGTGGAA  
 CTTTTTGGATATCAATACTGGAAAAACCTTCAGCATGTTAATGGAGGCTTTTATCCACTAATTGGATG  
 GAAGATTGGGCAAGAAGTGTATGTTTAGCTGAAGGCAATGCAGGAGACACGGGCACCCGCAATATGTTG  
 GCTCAAAAATTAGATCTCTTACAGACGCTGCTGAGACTGAAAAAATGGCCCTGAGCCTGGAAGATTCTG  
 AAGGGGTTTACTTTGTTCCGTCGTTTAGTGGATTACAGGCTCCATTAATGACCCCTGTGCTGTGCTC  
 TTTTATGGGTTTGAAGCACTCCACTAATAAATACCATCTTGTCCGAGCAATATTGGAGTCAATAGCTTTC  
 AGGAACAAACAGTTGTACGACATGCTGCAGAGAGAAATCCAGATTCCTGACGAACATCCGGGCAGATG  
 GAGGCGTGTGTAACAACGCTTTCGTCATGCAGATGACTTCAGACCTGATAAATGAGAAGTAGACAGACC  
 TGCCCACTTCGACATGCTCTGTTGGGGCAGCCTCTCTGGCTGGCCTCGCTGTTGGATTTTGGGCGGAC  
 AAGGAAGAGCTCCAGAAGCTGAGGCAAAGCGAGATGGTTTTCAAGCCTCAGAAGAAGTGGCAGGAATACG  
 AGGCATTT

**ACGCGTACGCGGCCGCTCGAG** – GFP Tag – GTTTAA

**Protein Sequence:**

>MG215815 representing NM\_177352  
 Red=Cloning site Green=Tags(s)

MSGQQERAERQREELSASAPPSRFVLGLDVGSTVIRCHVYDQATARVRGSSAQKVENVYPQPGWEIDPD  
 SLWAQFVAVIKDAVKAAGVQMNQIVLGLISTQRATFITWNKKTGHHFHNFISWQDLRAAELVKSWNNSLI  
 MKLLHGATRVLHFFSRKVMLTVSRFNFSTQHATLRLTWILQNLSEVKRAVEEDNCCFGTIDTWLLYKLT  
 KGSSYATDYSNASTTGFFDPYAMRWSRLITTMVSIPLSILPPVKDTSYNFGSVDEKIFGVPIPVVALVGD  
 QQSAMFGECCFETGDVKLTMTGTGFLDINTGKNLQHVNGGFYPLIGWKIGQELVCLAEGNAGDTGTAIMW  
 AQKLDLFTDAAETEKMALSLLEDSEGVYFVPSFGLQAPLNDPCACASFMGLKHSTNKYHLVRAILESIAF  
 RNKQLYDMLQREIQIPVTNIRADGGVCNNAFVMQMTSDL INEKIDRPAHFDMSCSLGAASLAGLAVGFWAD  
 KEELQKLRQSEMVFQPKKQWQEYEF

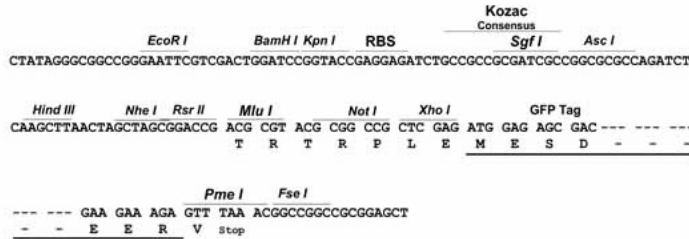
**TRTRPLE** – GFP Tag – V

**Restriction Sites:**

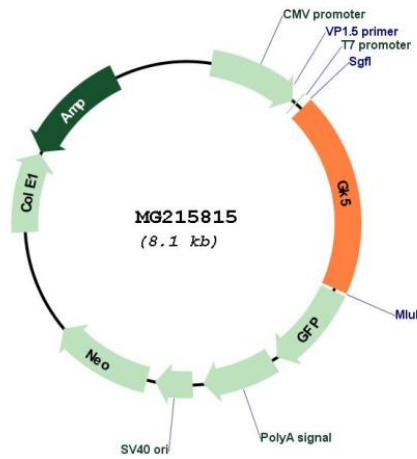
Sgfl-Mlul

Cloning Scheme:

Cloning sites used for ORF Shutting:



Plasmid Map:



<b>ACCN:</b>	NM_177352
<b>ORF Size:</b>	1548 bp
<b>OTI Disclaimer:</b>	The molecular sequence of this clone aligns with the gene accession number as a point of reference only. However, individual transcript sequences of the same gene can differ through naturally occurring variations (e.g. polymorphisms), each with its own valid existence. This clone is substantially in agreement with the reference, but a complete review of all prevailing variants is recommended prior to use. <a href="#">More info</a>
<b>OTI Annotation:</b>	This clone was engineered to express the complete ORF with an expression tag. Expression varies depending on the nature of the gene.
<b>Components:</b>	The ORF clone is ion-exchange column purified and shipped in a 2D barcoded Matrix tube containing 10ug of transfection-ready, dried plasmid DNA (reconstitute with 100 ul of water).
<b>Reconstitution Method:</b>	<ol style="list-style-type: none"><li>1. Centrifuge at 5,000xg for 5min.</li><li>2. Carefully open the tube and add 100ul of sterile water to dissolve the DNA.</li><li>3. Close the tube and incubate for 10 minutes at room temperature.</li><li>4. Briefly vortex the tube and then do a quick spin (less than 5000xg) to concentrate the liquid at the bottom.</li><li>5. Store the suspended plasmid at -20°C. The DNA is stable for at least one year from date of shipping when stored at -20°C.</li></ol>
<b>RefSeq:</b>	<a href="#">NM_177352.5</a>
<b>RefSeq Size:</b>	2746 bp
<b>RefSeq ORF:</b>	1551 bp
<b>Locus ID:</b>	235533
<b>UniProt ID:</b>	<a href="#">Q8BX05</a>
<b>Cytogenetics:</b>	9 E3.3