

Product datasheet for **MG215808**

Shc2 (NM_001024539) Mouse Tagged ORF Clone

Product data:

Product Type:	Expression Plasmids
Product Name:	Shc2 (NM_001024539) Mouse Tagged ORF Clone
Tag:	TurboGFP
Symbol:	Shc2
Synonyms:	6720466E06; SCK; ShcB; Sli
Mammalian Cell Selection:	Neomycin
Vector:	pCMV6-AC-GFP (PS100010)
E. coli Selection:	Ampicillin (100 ug/mL)



[View online »](#)

ORF Nucleotide Sequence:

>MG215808 representing NM_001024539
 Red=Cloning site Blue=ORF Green=Tags(s)

TTTTGTAATACGACTCACTATAGGGCGGCCGGGAATTCGTCGACTGGATCCGGTACCGAGGAGATCTGCC
 GCC**CGGATCGCC**

ATGACGCAGGGTCCGGGTGGCCGCGGCCCCCGAGCCCGAGGCGCCACCACCTTCTGCGCACTGCTGC
 CGCGGATGCCGAGTGAAGTTCGACGCGCCGGTAGCTTCTGGGCCGCGGTCCCGCGGCACGCGCT
 GGCGGGGTGGCAGAGCGCAGCCGAGCCGGGTCCCGCGCTGGCCGCTGTTGGCGCTTGCAGAA
 CCGCGCTGCGCCGCGCCCTGTCCGCTGCCCGCGCTCGGCCGCTGCCGGGCTCGGGGACGCGGGGCGCGC
 GGGTACTCCGGATGTCGCTGACGAGTGGGTGCGCAAGGCGGCTTATTACAAGCCGCGCACGGCTG
 GTTGCATCCCGATGCCAGGGTCTGGGGCCGGGGTCTCTTACATCGTTCGGTACATGGGCTGCATTGAG
 GTGCTTCGATCCATGCGCTCCCTGGATTCAACACCCGAACACAGGTGACGAGGGAAGCCATCAATCGGC
 TCCATGAGGCTGTGCCCGGTGTCCGGGCTCCTGGAAGAAGAAGGCCCAACAAGGCTCTGGCCTCCAT
 CTTGGGAAAAGCAACCTGCGCTTCGCCGCGATGAGCATCTCAGTCAACATCTCCGTGGACGGCCTTAAC
 TTGTCTGTTCCCGCCACCCGCGAGATCATCGCCAACCATCATATGCACTATTTTCTTCGCTCGGGT
 GTGACACGGACATGACTGATTACGTGGCCTATGTGGCCAAGGACCCCATCAACCAGAGAGCTGCCACAT
 CTTGGAATGCTGTGAAGTCTTGCCAGAGCGTATCAGCACCGTAGGGCAAGCCTTTGAGCTGCGCTTC
 AAGCAATACCTGCACAGTCCGCCAAGGCGGTAGTGCCCCCTGAAAGGCTGACTGGGCTGGAGGAGTTGG
 CCTGGGAGATGATGACGCTGCTGCAGACCACAATTAACAACAGCATTCCGGGAAAGGAGCCACCCCT
 GGGCGGCTGGTGGACTCCAGACTGGCTGTACACAGCCCTGTGCGTGGCGACTCGGGGCTTGGAA
 CAGGGAATGACACCAGTATGGAGAGATGCCCTGGCTTGCCTGGGACATGGGCCCTCTGGAGCAGCCC
 CACCGGGGATGGTACGTGCAGCAGATGCCCGAGGGCCACATGACTACGAGGAGCACCCTGTATGTCAA
 TACCCAGGGCCTGGATGCTGTGGAGCTTGAAGACACCGCCGAGGACCTCTGCAGTTTGAAGACAGCCCA
 AAGAAGGACCTGTTTGCATGCGACCCTTTGAAGATGCCCTGAAGTTGCACGCGTCTCAGTGGCAGCCG
 GCATCACTGCAGCCTCACCCCTCTGGAAGACCAGTGGCCAGTCCCCCTACCCGAGGGCCCCATTGC
 ACCCACAGAGGAGCAATTGAGGCAGGAGCCCTGGTACCACGGACGAATGAGCCGTCGGGCTGCAGAGAAG
 CTGCTTCGGGCCGATGGGACTTCTTGTGAGAGACAGCGTACCAACCCGGGCGAGTATGCTCACGG
 GCATGCATGCGGGGACGCCAAGCACCTGCTGCTGGTGGACCCGAGGGTGTGGTGGGACGAAAGATGT
 GTTGTGTTGAGAGCATCAGCCACCTCATAGACTATCACCTGAAGAATGGGCTGCCTATCGTGGCTGCTGAG
 AGCGAGCTGCATCTCGGGGAGTGGTCTCTCGGGAGCCA

AG**CGGACCG**ACGCGTACGCGGCCGCTCGAG - GFP Tag - GTTTAA

Protein Sequence:

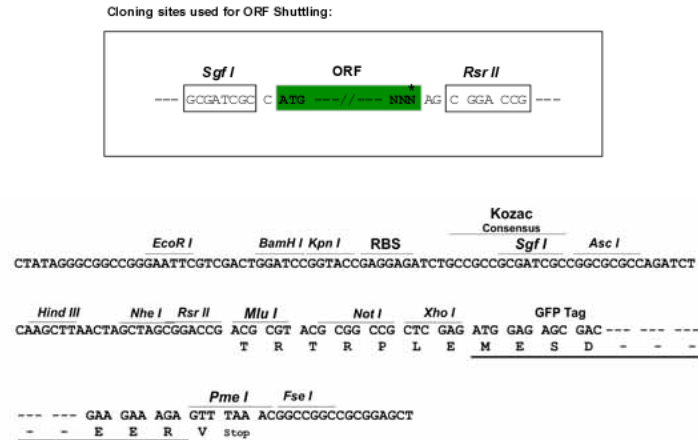
>MG215808 representing NM_001024539
 Red=Cloning site Green=Tags(s)

MTQPGGGRAAPEPEAPTTFCALLPRMPQWKFAAPGSFLGRGPAATRVAGVAEAQPEPGVPALAAVLGACE
 PRCAAPCLPALGRCRGSGRGARVTPDVADEWVRKGGFIHKPAHGWLHPDARVLGPGVSYIVRYMGCIE
 VLRSMRSLDFNTRTQVTREAINRLHEAVPGVRGSKKAPNKALASILGKSNLRFAGMSISVNISSVDGLN
 LSVPATRQIIANHHMQSISFASGGDTDMTDYVAYVAKDPINQRACHILECCEGLAQSVISTVGQAFELRF
 KQYLHSPKAVVPPERLTGLEELAWGDDDAADHNYNSIPGKEPPLGGLVDSRLAVTQPCALATLGGLG
 QGMTPVWRDARGLPMDMGPSSGAAPPDGYVQADARGPHDYEEHLVYNTQGLDAVELEDTAEAPLQFEDSP
 KKDLFDMRPFEDALKLHACSVAAGITAASPPLEDQWSPPTRRAPIAPTEEQLRQEPWYHGRMSRRAAEK
 LLRADGDFLVRDSVTNPGQYVLTGMHAGQPKHLLLDPEGVVVRTKDVLFESISHLIDYHLKNGLPVAAE
 SELHLRGVVSREP

SGP**TRRRLE** - GFP Tag - V

Restriction Sites:

Sgfl-RsrII

Cloning Scheme:


ACCN: NM_001024539

ORF Size: 1719 bp

OTI Disclaimer: The molecular sequence of this clone aligns with the gene accession number as a point of reference only. However, individual transcript sequences of the same gene can differ through naturally occurring variations (e.g. polymorphisms), each with its own valid existence. This clone is substantially in agreement with the reference, but a complete review of all prevailing variants is recommended prior to use. [More info](#)

OTI Annotation: This clone was engineered to express the complete ORF with an expression tag. Expression varies depending on the nature of the gene.

Components: The ORF clone is ion-exchange column purified and shipped in a 2D barcoded Matrix tube containing 10ug of transfection-ready, dried plasmid DNA (reconstitute with 100 ul of water).

Reconstitution Method:

1. Centrifuge at 5,000xg for 5min.
2. Carefully open the tube and add 100ul of sterile water to dissolve the DNA.
3. Close the tube and incubate for 10 minutes at room temperature.
4. Briefly vortex the tube and then do a quick spin (less than 5000xg) to concentrate the liquid at the bottom.
5. Store the suspended plasmid at -20°C. The DNA is stable for at least one year from date of shipping when stored at -20°C.

RefSeq: [NM_001024539.1](#), [NP_001019710.1](#)

RefSeq Size: 3974 bp

RefSeq ORF: 1722 bp

Locus ID: 216148

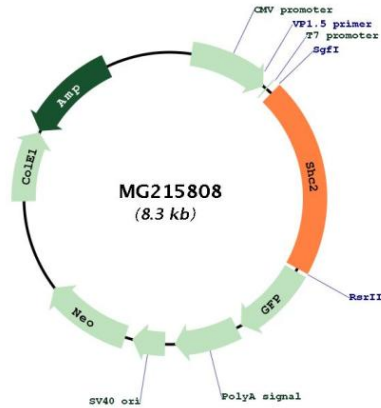
UniProt ID: [Q8BMC3](#)

Cytogenetics: 10 39.72 cM

Gene Summary:

Signaling adapter that couples activated growth factor receptors to signaling pathway in neurons. Involved in the signal transduction pathways of neurotrophin-activated Trk receptors in cortical neurons.[UniProtKB/Swiss-Prot Function]

Product images:



Circular map for MG215808