

Product datasheet for **MG215799**

Catsper2 (NM_153075) Mouse Tagged ORF Clone

Product data:

Product Type:	Expression Plasmids
Product Name:	Catsper2 (NM_153075) Mouse Tagged ORF Clone
Tag:	TurboGFP
Symbol:	Catsper2
Mammalian Cell Selection:	Neomycin
Vector:	pCMV6-AC-GFP (PS100010)
E. coli Selection:	Ampicillin (100 ug/mL)



[View online »](#)

ORF Nucleotide Sequence:

>MG215799 representing NM_153075
 Red=Cloning site Blue=ORF Green=Tags(s)

TTTTGTAATACGACTCACTATAGGGCGGCCGGAATTCGTCGACTGGATCCGGTACCGAGGAGATCTGCC
 GCC**CGGATCGCC**

ATGGCACAAGAACAAGGACATTTCCAGCTGCTCAGAGCTGATGCTATCCGTTCAAAGCTCATTGACACTT
 TCTCGCTCATAGAGCATTTCAGGGCTTGAGCCAAGCCGTACCAAGGCACACTCTCCGGGAGATACTTGA
 TCCTTCTTACCAGCAGAACTCATGTCAGGAGATCAGGAGCAGCTAGTGGCTTCTCCATAAAGCCTCGG
 CGAATGGGGCACATCACACTCGCGCGGTTGCTGAGCAGGCTTCGCGTGCAGTGAATGCCCC
 CTCTTCTTGTGGGCTGGATGGTCTTGATAGTTCTGTCTTCTCGAAATTCATCATCTCCCTCATCTT
 TCTGAACACCTTTGTGCTGATGGTTGAAATAGAATTGATGGAATCCACAATACTGCTCTGTGGCCAGT
 AAGCTGGCTTTGGAGGTGCAGATTGGTTCATCTTGCTTAGCTTCATTGTAGAGATACTTCTAATGTGGT
 TGGCCAGTTTTCTCTCTTCTGGAAGGATGCCTGGAATGTCTTTGACTTTTTTGTACCTTGTGTCTCT
 GCTTCTGAGTTAGTAGTCTGTTAGGAGTCCCAGCACACTCTGTGTGGTCCAGCTGCTGAGGGTCTGT
 CGGGTGCAGGCTCTCAAACCTGTTTGCACGATTCGGTCAAATTAAGTTATTCTTTGGCTCTGGTCA
 GGGCCCTGAAGAGCATGACGTTCTCTTGTGTTGCTGCTTATCTTCTACATTTTTGCTGTGACTGG
 TGTCTACTTCTCAGAGAATATCCCGATCAACTATCGAGGGCCTGGAGTACAACATGTTCTTCTCGGAC
 CTACTAAATTCAGTGGTACAGTGTTCATCTCTTACCTTGGATCATTGGTATGCAGTACTTCAGGATA
 TCTGGAAGGTGCCAGAATCTAGCCGTGTCTTAGCAGCATCTATGTTATCCTTTGGTTGCTGCTTGGCTC
 CATAATCTTTCGAAATATCATAGTAGCCATGATGGTTACTAATTCAGAATATCAGAAGTGAGCTGAGT
 GAGGAGATGAGCCACCTGGAGTTCAGTATAAAGCTGACATGTTCAAGCAACAGATTATCCAGAGGAGAC
 AGCACTCTGAATCACTAAGAGGGACCAGTCTTGGAAAGTCTCGAAGACATAATAGAACTTCTGATGC
 TAGTGATGATGATGACGATGACGACGATGATGACGACGATGATGATGATGATGATGATGATGATGATGAT
 ACTGAAAGCGATGGCGAGAAAAACGAAAACGAGAAAGCGATAGTGAGAATAGTGAGAGTGAGAATAGCG
 AGAGCGAGAAAATTGATCCTGAGAAAAGACTATGCCAAGAAAAGCTATCCTGAGAAAAGCCATCCTGAGAA
 AAGCTATCCTGAGAAAAGCCATCCTGAGAAAAGCTATCCTGAGAAAAGCCATCCTAAGAAAAGCTATGAT
 GAACAAGCTGAAGCTGAAGAGTCAAAGAAAAGCCTACCCAGTTTCCATTCAATCTCGTCCCATGGCT
 CCACTGCAGCCGATACTGCTTTCCTTGAACCTGGACTGGGAGACCCTTGTGCATGAGAACCTGCCTGG
 GCTAATGGACATGGATCAGGATGACCGCATTGTCTGGCCAGAGACTCACTCTCCGATATTTGAGTTA
 CTGAAAAGCTTCAGTATAACCTAGAAGAGCGCAAGAAGTTACAAGAATTTGCAGTCCAGGCCCTGATGA
 GTTTTGAAGACAAG

ACGCGTACGCGGCCGCTCGAG – GFP Tag – GTTTAA

Protein Sequence:

>MG215799 representing NM_153075
 Red=Cloning site Green=Tags(s)

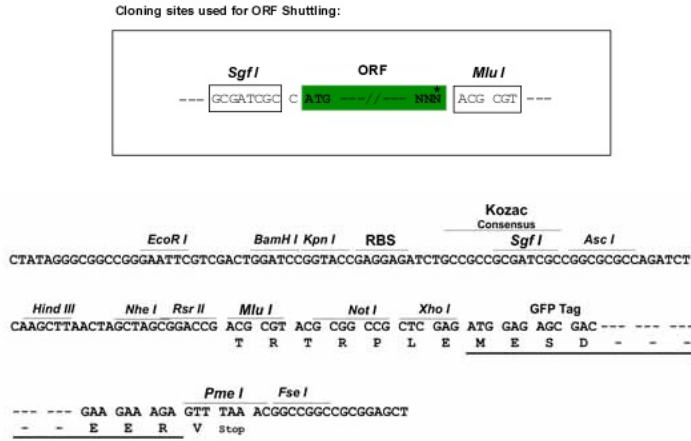
MAQEQGHFQLLRADAIRSKLIDTFSLIEHLQGLSQAVPRHTLREILDPSYQQKLSMGDQEQLVRFSIKPR
 RMGHITHSRRLSRLRVRCRMPPLSLWAGWVLDSSVFSKFIISLIFLNTFVLMVEIELMESTNTALWPV
 KLALLEVADWFILLSFIVEILLMWLASFLFWKDAWNVDFVFTLLSLLPELVVLLGVPASHVWLQLLRVC
 RVLRLSLKLFARFRQIKVILLALVRALKSMTFLLMLLLIFFYIFAVTGVYFFREYSRSTIEGLEYNMFFSD
 LLNSLVTVFILFTLDHWYAVLQDIWKVPESSRVFSSIIYVILWLLLSGIIIFRNIIIVAMMVTNFNIRSELS
 EEMSHLEVQYKADMFKQIIQRQHSLSLRTSLGKVSIEDIETSDASDDDDDDDDDDDDDDDDKSDA
 TESDGEKNENEESDSENSESENSESEKIDPEKDYAKKSYPEKSHPEKSYPEKSHPEKSYPEKSHPKKSYD
 EQAEAEESKEKAYPVSHSISSHGSTAADTAFLENLDWETLVHENLPLMDMDQDDRIVWPRDSLFRYFEL
 LEKLQYNLEERKKLQEFVQALMSFEDK

TRTRPLE – GFP Tag – V

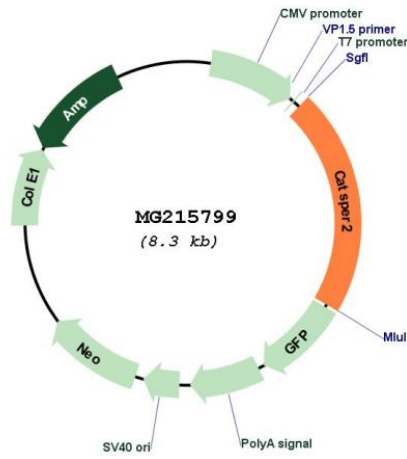
Restriction Sites:

Sgfl-MluI

Cloning Scheme:



Plasmid Map:



ACCN:

NM_153075

ORF Size:	1764 bp
OTI Disclaimer:	The molecular sequence of this clone aligns with the gene accession number as a point of reference only. However, individual transcript sequences of the same gene can differ through naturally occurring variations (e.g. polymorphisms), each with its own valid existence. This clone is substantially in agreement with the reference, but a complete review of all prevailing variants is recommended prior to use. More info
OTI Annotation:	This clone was engineered to express the complete ORF with an expression tag. Expression varies depending on the nature of the gene.
Components:	The ORF clone is ion-exchange column purified and shipped in a 2D barcoded Matrix tube containing 10ug of transfection-ready, dried plasmid DNA (reconstitute with 100 ul of water).
Reconstitution Method:	<ol style="list-style-type: none">1. Centrifuge at 5,000xg for 5min.2. Carefully open the tube and add 100ul of sterile water to dissolve the DNA.3. Close the tube and incubate for 10 minutes at room temperature.4. Briefly vortex the tube and then do a quick spin (less than 5000xg) to concentrate the liquid at the bottom.5. Store the suspended plasmid at -20°C. The DNA is stable for at least one year from date of shipping when stored at -20°C.
RefSeq:	NM_153075.3 , NP_694715.2
RefSeq Size:	2247 bp
RefSeq ORF:	1767 bp
Locus ID:	212670
Cytogenetics:	2 E5