

Product datasheet for **MG215789**

Muc20 (NM_001145874) Mouse Tagged ORF Clone

Product data:

Product Type:	Expression Plasmids
Product Name:	Muc20 (NM_001145874) Mouse Tagged ORF Clone
Tag:	TurboGFP
Symbol:	Muc20
Synonyms:	BC026367
Mammalian Cell Selection:	Neomycin
Vector:	pCMV6-AC-GFP (PS100010)
E. coli Selection:	Ampicillin (100 ug/mL)



[View online »](#)

ORF Nucleotide
Sequence:

>MG215789 representing NM_001145874
 Red=Cloning site Blue=ORF Green=Tags(s)

TTTTGTAATACGACTCACTATAGGGCGGCCGGAATTCGTGACTGGATCCGGTACCGAGGAGATCTGCC
 GCC**CGGATCGCC**

ATGGGCTCTGTCTGGGGCTGGCTGTGCCCTCCTTGTCTTCTGTGGAAGGTTGGCGTCAGTGTGAGCT
 CTCAGGTCTCGACATTAGCAGATCAGTTCCTTTGGTGACAACCAACAACATGGAAGTGCCACCTTCAC
 TCAAAGGGACAGGCCAGCTCAGAGAGAGCTTCCAGACCACCAACCTGATTCAGTATGTACCTCTAGAC
 ACGCAAATCTCAGCACTGAATCTGCTTCTAATGCTTTAAGTGCAACTAGTATCAGTTCAGAGGTCAATT
 CCAGAGACACTCAGACCCTCTTTTGTAAACAAAGACCAGGAAGACACATACTACCCTCTGCAGCATC
 ATCCCTAGAGGCCAGACCCTCTCCTAATTTGTCAACCCTGAATATTCAGATTACCTCCCAATAGCA
 TCGTCCCTGGATGCTCAGACATTTTTCTGTATCATTATCCCTGAGTACCCAGACCCTTCTCCTGCAC
 CATCATTCTGGATACCCAAACCACTTCCCTGAACCATCATCTCTGACCCTTCCCTGCACCATCATC
 TCTGATCACTTCTCTACTCCATCATCTCTAACTACATCCCTGCACCATCATTCTGGATACCCAGACC
 ACTTCCCTGCACCATCATCTCTGACCCTTCCCTGCACCATCATCCCTAGATACCCAGACCATCTCAC
 CTATTGAATTGACCCAAAGACCCAAACCAATTTCCACTGTAACGGAGACCAGAACGGTTTCAATAAGAAT
 ACCTTCTGACCTCACGGTTATGCACACCATCCCTACAGAGACATTGGCACCAAGCAACAGCCCCAGAAT
 GGGATGAGCACTGTCAAACCTGGCACAGTGTGGGACTCCATAGAAGCCGTCTTTGACACCCTTTGTACCG
 ATGACAGCTCTGAAGAGGCAAGGAAGATCACAGTTGACCTCCTGACGTTGGCACACACCTCCACGGAAAT
 GGAGTACCTGTCTCAGAGAGCAGCTCTCCTCTGACAGTTCAGCTGGGGTCTCAGCAGCTCACGAGTC
 CTGGGACCCGACAGTGAACCTCCAGCAAGGGGTTGGTTGCCTTCAACATCACTCATATTAACCTCAGCA
 ACTGCATCACAGAAATAGAAACAACCATCACCATCTCTGGGGCCCAAGGCGGAGCCTCAGCCCTACAGA
 AGCGACGGCAGCTTTGTTCACTTCTGAGATATTAACCTTTCCTCCACCCACTGAGGCAAAAACCAATTTTC
 CCCGAGACCACAAGCTTATCTGGGATCCTGTCAACTGCTGGCACCCCGGCCCTTGCCACCACCCTTGAGG
 GGACAGTCTCCACTAGTGAATCACAGAAAGCGAAACAGCAGTGGCCAGACTCTTACCTCTGTTGGAAC
 TTCGGTGACAGTTAGAAGGAACCCCTGGAAAACACTTCAACACTCTCTATTGAGACACAAGCCCACT
 GAGGTCTTGGGCACCATCACAGTCCCCATGGTTGCTGGATCAACAATGGGAGAAGCAGCCTCCTTCGTGA
 GTTTCACGGCTCTCGACAGCAGCAGTCTCTCAGTGGTGGTACCACCGAGAGCTCTGCTACCTCAGAGAC
 TTTAACACAGGCAATACAACCAACAGCTCCTTCTCACAGAGAGCCACCCTCCTTTTTCTATCTATTCA
 ACTACAGCTAGCACCAGCAAAAACCAACATCACCTTAACCAAGACCACAGCCTCACCAAGCCCCCGA
 CGCATCTACAACATCTGCATCCACTGCTTGGATAAGGAAAACCAAAAACATGATCCAGGTGAAGATGG
 AGGCTTCTCCTTGTACGGCTGACCGTGGCCTCCCTAAGGACCTCACTGAGCACAACGCCAGAGAGAAG
 CTGATGAACCAGATAGTGACTCACGAGCATCTGGTCTGGACATCTGCCCTCGAGATGGGGAAGAAGTG
 GACGTCTTCTGGCTTCTCCACTCCTTCTGCTCTCTCTGCCGAGCCTGCAGGAGGAAGGCCCTCCATC
 ACGGCGCCTATCAGCTGGTTGTTTCAGATAGTGGA

ACGCGTACGCGGCCGCTCGAG – GFP Tag – GTTTAA

Protein Sequence: >MG215789 representing NM_001145874
 Red=Cloning site Green=Tags(s)

MGSVWGLAVPLL VFCWKVGVSVSSPGLDISRSVPLVTTNNMEVSTFTQRDRPSSERAFQTTNLIQYVPLD
 TQTLSTESASNALSATSISSSEVNSRDTQTTSFVTKTRKTHHTTTPAASSLEAQTTPNLSTLNIQITSPIA
 SSLDAQTIFFVLSLSTQTTSPAPSFLDQTTSPEPSSLTTPAPSSLITSPTPSSLTTPAPSFLDQT
 TSPAPSSLTTPAPSSLDQTISPIELTLKTQTIISTVTETRTVSIRIPSDLTMHTIPTETLAPSNPRT
 GMSTVQGTGVWDSIEAVFDLCTDDSSSEARKITVDLLTLAHTSTEVEYLSSESSSSDSSAGVLSSSRV
 LGPDSATPAKGLVAFNITHIKLSNCITEIETTITISGAPGASLSPTEATAALFTSEILTLPPPTEAKPIF
 PETTSLGILSTAGTPALATTLEGTVSTSAITESETAVAQTLTSVGTSVTVRRNPLENTSTLSIETQSH
 EVLGTITVPMVAGSTMGEAASFVSTALDSSSLSVVVTTESSATSETLTTGNTTSSFLTESHPPFSIYS
 TTAASKNPNITLTKTTASPKPPTHTTASATAWIRKTKHDPGEDGGFLLVRLTVASPKDLTEHNAREK
 LMNQIVTHEPSGPHLPSRWGRSGRPSWLLHSSASPAEPAGGRPPSRRLSAGCSDSG

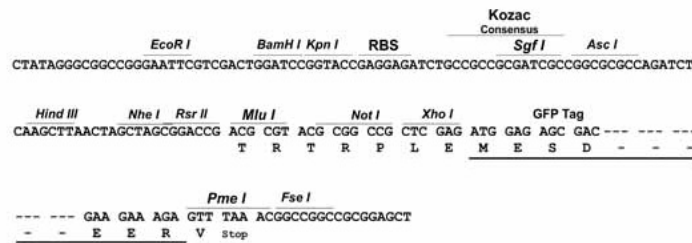
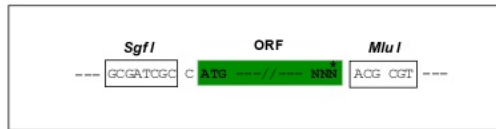
TRTRPLE - GFP Tag - V

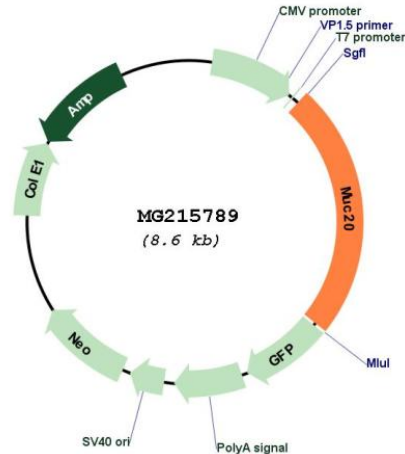
Restriction Sites:

SgfI-MluI

Cloning Scheme:

Cloning sites used for ORF Shuttling:



Plasmid Map:


ACCN: NM_001145874

ORF Size: 2064 bp

OTI Disclaimer: The molecular sequence of this clone aligns with the gene accession number as a point of reference only. However, individual transcript sequences of the same gene can differ through naturally occurring variations (e.g. polymorphisms), each with its own valid existence. This clone is substantially in agreement with the reference, but a complete review of all prevailing variants is recommended prior to use. [More info](#)

OTI Annotation: This clone was engineered to express the complete ORF with an expression tag. Expression varies depending on the nature of the gene.

Components: The ORF clone is ion-exchange column purified and shipped in a 2D barcoded Matrix tube containing 10ug of transfection-ready, dried plasmid DNA (reconstitute with 100 ul of water).

Reconstitution Method:

1. Centrifuge at 5,000xg for 5min.
2. Carefully open the tube and add 100ul of sterile water to dissolve the DNA.
3. Close the tube and incubate for 10 minutes at room temperature.
4. Briefly vortex the tube and then do a quick spin (less than 5000xg) to concentrate the liquid at the bottom.
5. Store the suspended plasmid at -20°C. The DNA is stable for at least one year from date of shipping when stored at -20°C.

RefSeq: [NM_001145874.1](#), [NP_001139346.1](#)

RefSeq Size: 3673 bp

RefSeq ORF: 2067 bp

Locus ID: 224116

UniProt ID: Q8BUE7

Cytogenetics: 16 B3

Gene Summary: May regulate MET signaling cascade. Seems to decrease hepatocyte growth factor (HGF)-induced transient MAPK activation. Blocks GRB2 recruitment to MET thus suppressing the GRB2-RAS pathway. Inhibits HGF-induced proliferation of MMP1 and MMP9 expression (By similarity).[UniProtKB/Swiss-Prot Function]