

Product datasheet for **MG215783**

Mark1 (NM_145515) Mouse Tagged ORF Clone

Product data:

Product Type:	Expression Plasmids
Product Name:	Mark1 (NM_145515) Mouse Tagged ORF Clone
Tag:	TurboGFP
Symbol:	Mark1
Synonyms:	AW491150; B930025N23Rik; Emk3; mKIAA1477; mPar-1c; Par-1c
Mammalian Cell Selection:	Neomycin
Vector:	pCMV6-AC-GFP (PS100010)
E. coli Selection:	Ampicillin (100 ug/mL)



[View online »](#)

ORF Nucleotide Sequence:

>MG215783 representing NM_145515
 Red=Cloning site Blue=ORF Green=Tags(s)

TTTTGTAATACGACTCACTATAGGGCGGCCGGGAATTCGTCGACTGGATCCGGTACCGAGGAGATCTGCC
 GCC**CGCATCGCC**

ATGTCGGCGCGGACGCCATTGCCACGGTGAACGAGCGGGACACGGAGAACCATACGTCTGTGGATGGCT
 AACTGAAACACATATCCCGCTGCCAAGTCAAGTAGCAGACAGAACCTTCCCGGTGTAGAAACTCCAT
 TACGTCAGCGACAGATGAACAGCCTCACATCGAAATTACCGTTACAGAAAACAATAGGAAAAGGAAAT
 TTTGCCAAAGTAAAATTGGCAAGACATGTTCTAACAGGTAGAGAGGTCGCTGTGAAAATAATAGACAAAA
 CTCAGCTAAACCTACCAGTCTACAGAAGTTGTTCCGAGAAGTACGAATAATGAAGATACTGAACCATCC
 TAACATAGTAAAAGTGTGAAATATTGAAACAGAGAAGACTCTATTTGGTCATGGAATACGCAAGT
 GGGGGTGAAGTCTTTGATTACTTAGTTGCCACGGAAGAATGAAAGAGAAAAGAGGCCCGTCCAAATTC
 GGCAGATTGTATCTGCTGTACAGTATTGCCATCAAAAATGCATTGTTACCGTGATCTTAAGGCTGAAA
 CCTTCTCCTTGATGCTGATATGAATATTAATAATGCTGACTTTGGTTTTAGCAATGAATTCACAGTGGG
 AACAAATTGGACACATTCGTGGAAGCCCGCTTATGCTGCCCCGAGCTTTTCCAAAGGCAAGAAGTACG
 ATGGGCCAGAAGTGGATGTGTGGAGTCTGGGCGTCATTCTCTACACGCTGGTCAGTGGCTCGCTGCCGTT
 TGATGGCCAGAATCTAAAGGAACTTCGGGAGCGAGTCTTCGAGGGAAGTACCGCATCCCCTTCTACATG
 TCCACAGACTGTGAGAATCTCCTGAAGAACTGTTAGTGTGAATCCCATAAAGCGGGCAGCCTGGAGC
 AAATAATGAAAGACCGATGGATGAATGTTGGTCATGAGGAAGAAGAGCTAAAGCCGACTCTGAGCCTGA
 GCTTGATCTCAGCGATGCAAAAAGAATAGACATTATGGTCACCATGGGTTTTGCACGAGATGAAATCAAT
 GATGCCTTAGTAAAGTCAAAAATATGATGAAGTTATGGCTACTTACATCCTCTAGGTAGAAAACACCCCG
 AGTTCGAAGGTGGTGAAGTCACTGTCCAGTGGGAGCTTGTCCAGCGGTCGCGGCCGAGCAGCAGCTGAA
 CAACAGCACCCCTTCAGTCGCTGCTCACCTGAAGGTCCAGCGGAGCATCTCGGCCAACCAAGCAGAGG
 CGCTTCAGCGACCACGCCGCCCTCCATCCCCCTGCCGTCTCATACACCAAGAGGCTCAGGCCAACA
 GCGTGGAGAGTGAACAGAAGGAGGAGTGGGGCAAAGACACAGCCCGCAGACTTGGCAGCACCACAGTGGG
 ATCAAAGAGCGAAGTACAGCCAGCCCTTGGTGGGGCCAGACAGGAAAAAGTCCACAGCGAGCCCAAGT
 AACACGTATATTCTGGCGGTAGCATGGCGAGGAGGAATACGTATGTGTGTGAGAGGAGCACAGACCGGT
 ACGCAGCCTTGCAGAATGGAAGAGACAGCAGCCTTACAGAGATGTCTGCCAGCAGCATGCTCTCGGCGG
 CTCCACCGTGGCCTCTGCTGGCCCTCAGCACGTCCCCGCCACCAGAAATCTATGTCAACCTCTGGCCAC
 CCTATAAAAGTTACACTGCCAACCATTAAGATGGCTCAGAAGCGTATCGGCCTGGTGCAGCTCAGAGAG
 TGCTGCTGCTTCTCCGCTGCTCACAGCATCAGTGCCAGCACTCCAGACAGGACCCGCTTCCCCCGAGG
 GAGCTCCAGCCGAAGCACTTTCCATGGGGAACAGCTCCGAGAGCGGCGCAGCGCGGCTTACAACGGACCA
 CCGGCCTCCCCATCCCACGAAACGGGTGCGTTTGACATGCCAGAAGGGGCACGTCAACCGGCATCATCA
 GCAAAATCACCTCCAAGTTCGTCCGAGGGATCCAAGTGAAGGCGAAGCCAGCGGAGAGCCGACACAGC
 CAGAGGTTTCATCGGGAGATCCCAAAGAGAGAGACAAGGACGAGGGCAAAGAGGCCAAGCCCGCTCCCTG
 CGCTTACCTGGAGCATGAAGACCAGGACTCCATGGACCCCAACGACATGCTGAGGGAGATCCGCAAGG
 TGCTGGATGCCAACCTGTGACTATGAGCAGAAAAGAGAGGTTCTGCTCTTCTGCGTTCACGGAGACGC
 TCGGCAGGACAGCCTCGTACAGTGGGAGATGGAGGTCTGCAAGTTGCCTCGGCTCTCACTCAACGGGGTC
 CGCTTCAAGCGAATATCTGGGACATCTATTGCCTTTAAGAATTGCATCCAAAATAGCAATGAGCTTA
 AGCTG

ACGCGTACGCGGCCGCTCGAG – GFP Tag – GTTTAA

Protein Sequence: >MG215783 representing NM_145515
Red=Cloning site Green=Tags(s)

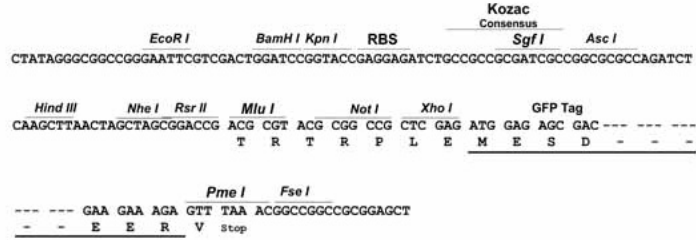
MSARTPLPTVNERDTENHTSV DGYTETHIPPAKSSSRQNLPRCRNSITSATDEQPHIGNYRLQKTIGKGN
FAKVKLARHVL TGREVAVKIIDKTQLNPTSLQKLFREVRIMKILNHPNIVKLFEVIETEKTLVMEYAS
GGEVFDYLV AHGRMKEKEARAKFRQIVSAVQYCHQKCI VHRDLKAENLLLDADMNIKIADFGFSNEFTVG
NKLDTF CGSPPYAAPEL FQGKKYDGP EVDVWSLGVILYTLVSGSLPFDGQNLKELRERVLRGKYRIPFYM
STDCENLLKLLVLNPIKRSLEQIMKDRWMNVGHEEEELKPYSEPELDLSDAKRIDIMVTMGFARDEIN
DALVSQKYDEV MATYI LLGRKPP EFEGGESLSSGSLCQRSRPSSDLNNS TLQSPAHLKVQRSISANQKQR
RFS DHAGPSIPPAVS YTKRPQANSVESEQKEEWGKDTARRLGSTTVGSKSEVTASPLVGPDRKKSTASPS
NNVYSGGSMARRNTYVCERSTDRYAALQNGRDSSLTEMSASSMSSAGSTVASAGPSARPRHQKSMSTSGH
PIKVTLPTIKDGSEAYRPGAAQRVPAASPSAHSISASTPDRTRFPRGSSSRSTFHGEQLRERRSAAYNGP
PASPSHETGAF AHARRGTSTGII SKITSKFVRRDPSEGEASGRADTARGSSGDPKERDKDEGKEAKPRSL
RFTWSMKTSSMDPNDMLREIRKVL DANTCDYEQKERLLFCVHG DARQDSL VQWEMEVCKLPRLSLNGV
RFKRISGTSIAFKNIASKIANELKL

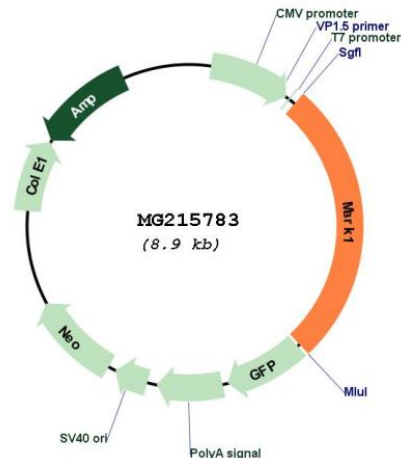
TRTRPLE - GFP Tag - V

Restriction Sites: Sgfl-MluI

Cloning Scheme:

Cloning sites used for ORF Shutting:



Plasmid Map:


ACCN: NM_145515

ORF Size: 2385 bp

OTI Disclaimer: The molecular sequence of this clone aligns with the gene accession number as a point of reference only. However, individual transcript sequences of the same gene can differ through naturally occurring variations (e.g. polymorphisms), each with its own valid existence. This clone is substantially in agreement with the reference, but a complete review of all prevailing variants is recommended prior to use. [More info](#)

OTI Annotation: This clone was engineered to express the complete ORF with an expression tag. Expression varies depending on the nature of the gene.

Components: The ORF clone is ion-exchange column purified and shipped in a 2D barcoded Matrix tube containing 10ug of transfection-ready, dried plasmid DNA (reconstitute with 100 ul of water).

Reconstitution Method:

1. Centrifuge at 5,000xg for 5min.
2. Carefully open the tube and add 100ul of sterile water to dissolve the DNA.
3. Close the tube and incubate for 10 minutes at room temperature.
4. Briefly vortex the tube and then do a quick spin (less than 5000xg) to concentrate the liquid at the bottom.
5. Store the suspended plasmid at -20°C. The DNA is stable for at least one year from date of shipping when stored at -20°C.

RefSeq: [NM_145515.2](#), [NP_663490.2](#)

RefSeq Size: 4565 bp

RefSeq ORF: 2388 bp

Locus ID: 226778

UniProt ID: [Q8VHJ5](#)

Cytogenetics: 1 H5

Gene Summary:

Serine/threonine-protein kinase (By similarity). Involved in cell polarity and microtubule dynamics regulation. Phosphorylates DCX, MAP2 and MAP4. Phosphorylates the microtubule-associated protein MAPT/TAU (By similarity). Involved in cell polarity by phosphorylating the microtubule-associated proteins MAP2, MAP4 and MAPT/TAU at KXGS motifs, causing detachment from microtubules, and their disassembly. Involved in the regulation of neuronal migration through its dual activities in regulating cellular polarity and microtubule dynamics, possibly by phosphorylating and regulating DCX. Also acts as a positive regulator of the Wnt signaling pathway, probably by mediating phosphorylation of dishevelled proteins (DVL1, DVL2 and/or DVL3).[UniProtKB/Swiss-Prot Function]