

Product datasheet for **MG215770**

Cwf19I2 (NM_027545) Mouse Tagged ORF Clone

Product data:

Product Type:	Expression Plasmids
Tag:	TurboGFP
Symbol:	Cwf19I2
Synonyms:	3230401L03Rik; 9030209E10
Mammalian Cell Selection:	Neomycin
Vector:	pCMV6-AC-GFP (PS100010)
E. coli Selection:	Ampicillin (100 ug/mL)



[View online »](#)

ORF Nucleotide Sequence: >MG215770 representing NM_027545
Red=Cloning site Blue=ORF Green=Tags(s)

TTTTGTAATACGACTACTATAGGGCGCCGGGAATTCGTGCGACTGGATCCGGTACCGAGGAGATCTGCC
GCCGCGATCGCC

ATGGAGCGTTTAGTGTAGATTTGAAAGTGCTAGCAGTATCGAAGAGCGAAAAGAAGACACCCGTAATG
CCAGGGCCGAGGTGTACGCCAGGCCAAACATAATTTTGAGAAAGAACAAGGGGTGAAGAACGTAAGCG
ACTTCGGGATGAGGACACATGGATGCTTCCTGATGTGCATGAGCGAATTGAACAGTTCTCACAGGAACAT
TCTGAGAAGAAAAAGAAGAAAAGGACAAGCATTCAAAAAAGTGAAGAAAGAGAAGAAGAAGAGGA
AGAAACAGAAATGTCAGAAACAGGTGAGTCGACTGACAGCTCCGCAAGCTCTGAAGATGAGTGGGTTGA
GGCTGCTCCCTCCAGATATCTGACAAAGAAAAGACCTGGAAAGTGAAGACAAAAGGACAGAAAGAAGAA
TGTGACAGCCACGATATTCAGCGTGATGAGTGGATGACTATTGATTTTATGTCCATTAAGTGTGTCTCT
CATCATCACTCAAAGCTGAAAAGGAACTCTAAGACAAATAGAGCGGGAGAAAACCAAGTGTAGAGCA
GTCCAAACTGCTCGAAAAGAAATTGAATCCATACTGGAAGGACGGGGGACAGGTCTCCCATCAAAAACC
TGATATACTCCAGTTACTAAAGCTAAAGGAGTGGAGGATGGCGGATTAAAGCTGGCTAAGAAAAGTCTGTG
AAAGAATGAAGGAACAAGCTCAAAAAGAAAACAGAAATTTTGAAGATATTGTAGCTGAAAAATACGGGTC
AATGGAATATTTTCAGTCAAAATTAAGAAAGCTGAAAAATTTGCATACAAAAAGAAGACTGTGGATGG
GAACGGTGGAGAAAGCCTACATATTCAGATAGACACAGTGTAGTCAAGCAAGTGCCACATCAGACTTAG
TGAAATGTAAAAATCTCTCAGAGGACAGACACCTGGAAATGGAGCCAGCAAAATAGCAGCAACTATAAGTT
TAGTGGTCTGACACAGGGAAGAGATCTGGGACTTTACAAAACCTGTAGAAGGGAATCTGCCCTAAGAAAA
AACCAAGATTCTTCTGGAATTTGAGATCTAAATTTCTAAGACCCTCTGATGAAGATGAATTGTCATTTT
ACAAGAGGAAAAATTTGAATCATCTAGTTCATATTCTCCATTAGTGGCTCAGGCTTCTTTGCATTGTGA
CTTTCCGAAAACCTCAGAGAACAGTGAAGAAAGTTGAGCATCTGCAAGTGGATCTGATAGGCGACAGAA
AACAGGAAGCCTTCAGATAAAAAGCCATTGAAAACCTGGAGCTACAACGCCAACCCAGCACTCTACAGGAG
GTAGAAGAGAACAGTTACAGGCTGAGAGCATGAGTTGTGATCCACCAGGAAGAGGACTTCAGCAAGACAT
GACATTGACAATCGCTGGTCCAGAGGACAGTCCACCTATATCTTAAATGTTGATGAAAAGAACAAGTTG
GGGCCAAGATTATCAAGGCAGAAATGATGGGGAATATGGAATTAGCTGAACAACTTAAAGCCCAACTTA
AAGAGGCAAAATAAATTTAAAGAAACACAGATGCCGGCAAAAAGATTGGGCGTAGAGCATGAAGATGAACA
AGAAGTAATCCTTATTCAAACAGATAAGTCTGGAAGAATGTGGCCTGTGAGCAGCCCTAGAGAAACCTG
GATATGAAAGCAGAACGAAGGAAGAGAAAGAGAGTTTCAACCCATGAGGATAAAGAAAGGTCGATACT
TTCTGATGATGATCATTGAGCCTCAAAGATTTAGTCAAGAATGAGAAAATAGGAACAGATATCAACCA
AAACAGACTTTTATGAAAATGGCATCTAAGTTTATGGGAAAATCAGATGAAGACAATTATACTCTGGAT
GACATGTTTGTCTCAAAGCAGCTGAGAAAAGAGCATCTTGGTAAGAAGGAAGAGAGCCAGAGGAGAAGAG
CGATTGCTGAGCACCAGAGTCTTGTGCAAAAATGGCAAAGTGCCTTTACTGTTTTGACAGCTCTCAGTT
CCCCAAGCACCTTATTGTTGCAATCGGTGTGAAGGTTTATTTATGTTTACCCAGTTTCCAGTCTCTTACT
GAAGGACACTGCTTCATAGTCCCTCTGCAACATCATCAAGCAGCCACTGTATTAGATGAAGATGTCTGGG
AGGAGATCCAGATGTTTCGAAAATCATTGGTAAAAATGTTTGAAGATAAAGAATTGGATTGTATCTTTTT
GGAGACTAATATGGGTTTGAAGAAACACTATCATATGGTTTATGAGTGTATCCCTCTCCAAAGGAAGT
GGTGATATGGCTCCCATCTATTTTAAAGAAAGCCATAATGGAATCTGATGAAGAATGGTCCATGAATAAGA
AGTTGATTGATTTGCTTCAAAGATATTAGAAAGTCTGTGCCAGAGGTTTGCCTTACTTTGCTGTGCGA
CTTTGGTCTTCAGGAGGTTTTGCCACATCATTGAAGATCAGTACAGATTCCCTCATTACTTTGGAAAG
GAAATCATTGGTGGTATGCTGGATCAGAACCTAGACTATGGAGGAAGGGGATCCGAGAAAGCTTTGAGG
ACCAGAGGAAGAAATCATTGCAAGTTTGTCTCAGTGGTGGAAACCATATGATATCACCAAAAGTAAAAGCTC
T

ACGCGTACGCGGCCGCTCGAG - GFP Tag - GTTTAA

Protein Sequence:

>MG215770 representing NM_027545

Red=Cloning site Green=Tags(s)

MEAFSVRFESASSIEERKEQTRNARAEVLRQAKHNFKEQRGEERKLRDEDTWMLPDVHERIEQFSQEH
SEKSKKKKDKHSHKVKKEKKKKRKKQKQKQSESTDSASSEDEWVEAAPSQISDKEKTWKVKDKRTEEE
CDSHDIQRDEWMTIDFMSIKTVSSSSLKAEKETLRQIEREKTQVLEQSKLLERELNPYWKDGGTGLPSKT
CILPVTKAKGVEDGGLSWLRKSCQRMKEQAQKENRNFEDIVAKEYGSMEIFQSKLKEAEKIAAYKKEDCGW
ERWRKPTYSDRAQCSQASGTSVLKCKNLSEDRHLEMEPANSSNYKFSGPD TGKRSGLTQTCRRESALRK
NQDSSGNLRSKFLRPSDEDEL SFHKRKNFESSYSPLVAQASLHCDFRKLTENSEESSASCRRSRRRQE
NRKPSDKKPLETWSYNANQHSTGGRREQLQAESMSCDPPGRGLQQDMLT IAGPEAEESTYILNVDEKNKL
GAKI IKAEMMGNMELAEQLKAQLKEANKFKETQMPAKRLGVEHEDEQEVI LIQTDKSGRMWPVSSPRETL
DMKAERRRKRKRVSTHEDKERVRYFPDDHLSLKD LKNEKIGTDINQNRLFMKMASKFMGKSDENYTL
DMFVSKAAEKEHLGKKEESQRRRAIAEHQSLAAKMAKCLYCFDSSQFPKHLIVAIGVKVYLCLPSFQSLT
EGHCFIVPLQHHQAATVLDDEVWEEIQMFRKSLVKMFEDKELDCIFLETNMGLKKHYHMVYECIPLPKEV
GDMAPIYFKKAIMESDEEWSMNKKLIDLSSKDIRKSVPRGLPYFAVDFGLQGGFAHI IEDQYRFPHYFGK
EIIIGMLDLEPRLWRKGIRESFEDQRKSLQFAQWPKPYDITKSKSS

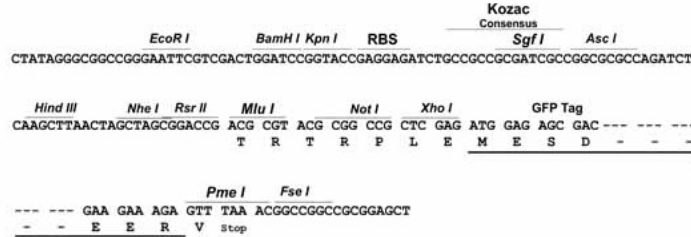
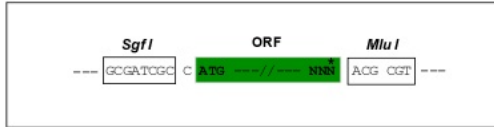
TRTRPLE - GFP Tag - V

Restriction Sites:

Sgfl-MluI

Cloning Scheme:

Cloning sites used for ORF Shutting:



ACCN: NM_027545

ORF Size: 2661 bp

OTI Disclaimer: The molecular sequence of this clone aligns with the gene accession number as a point of reference only. However, individual transcript sequences of the same gene can differ through naturally occurring variations (e.g. polymorphisms), each with its own valid existence. This clone is substantially in agreement with the reference, but a complete review of all prevailing variants is recommended prior to use. [More info](#)

OTI Annotation: This clone was engineered to express the complete ORF with an expression tag. Expression varies depending on the nature of the gene.

Components: The ORF clone is ion-exchange column purified and shipped in a 2D barcoded Matrix tube containing 10ug of transfection-ready, dried plasmid DNA (reconstitute with 100 ul of water).

Reconstitution Method:

1. Centrifuge at 5,000xg for 5min.
2. Carefully open the tube and add 100ul of sterile water to dissolve the DNA.
3. Close the tube and incubate for 10 minutes at room temperature.
4. Briefly vortex the tube and then do a quick spin (less than 5000xg) to concentrate the liquid at the bottom.
5. Store the suspended plasmid at -20°C. The DNA is stable for at least one year from date of shipping when stored at -20°C.

Note: Plasmids are not sterile. For experiments where strict sterility is required, filtration with 0.22um filter is required.

RefSeq: [NM_027545.2](#), [NP_081821.1](#)

RefSeq Size: 3953 bp

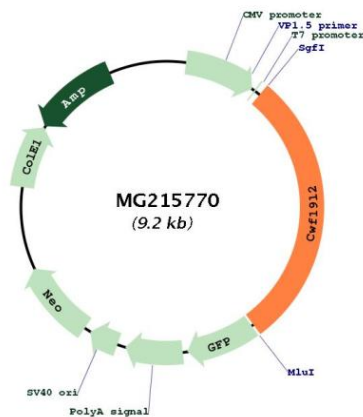
RefSeq ORF: 2664 bp

Locus ID: 244672

UniProt ID: [Q8BG79](#)

Cytogenetics: 9 A1

Product images:



Circular map for MG215770