

Product datasheet for **MG215766**

Pxk (NM_178279) Mouse Tagged ORF Clone

Product data:

Product Type:	Expression Plasmids
Product Name:	Pxk (NM_178279) Mouse Tagged ORF Clone
Tag:	TurboGFP
Symbol:	Pxk
Synonyms:	C230080L11Rik; D14Ert813e; MONaKA; Monaka; Slob
Mammalian Cell Selection:	Neomycin
Vector:	pCMV6-AC-GFP (PS100010)
E. coli Selection:	Ampicillin (100 ug/mL)



[View online »](#)

ORF Nucleotide Sequence:

>MG215766 representing NM_178279
 Red=Cloning site Blue=ORF Green=Tags(s)

TTTTGTAATACGACTCACTATAGGGCGGCCGGAATTCGTCGACTGGATCCGGTACCGAGGAGATCTGCC
 GCC**CGCATCGCC**

ATGGCCTTCATGGAGAAGCCGCGCTGGCAAGGTGCTGCTGGACGACACGGTGCCGCTGACAGCGGCCG
 TCGAGGCGAGCCAGAGTCTGCAGTCGCACACGGAATATATCATCCGGGTGCAAAGAGGAATTTCTGCAGA
 AAACAGCTGGCAGATCGTCAGAAGATACAGTGACTTCGATCTGCTTAACAACAGCTTGCAAATTACAGGC
 CTGAGCCTGCCTCTTCTCCTAAGAAACTGATTGGAAACATGGACCGTGAGTTCATCGTGAGAGGCAGC
 GAGGCCTGCAGAACTACCTAACGTTCATCATGGCAAATCATGTCTTGCCAAGTGTGAGCTGCTTAAGAA
 GTTCTAGACCCAAACAATACTGCAAACTATACTGAGATCGCCTTACAGCAGGTTTCCATGTTCTTC
 CGATCAGAACCAAAGTGGGAGGTGTTAGAACACTGAAGGACATAGGTTGGAGGATAAGGAAGAAATATT
 TCTTGATGAAAAAATAACCAACCAAGGAGCGGCTGGTCTAAGCTGGGCTGATCTTGGCCAGACAA
 GTACTTGTGAGATAAAGATTTTTCAGTGTCTAATCAAACCTTCTGCCTTCTGTGTGCACCCTTACATCTAT
 CCGGTACCTTTGCCACGGCTAGCGAGTCTCCGATTGCTGATTAGAGCCTTAAATGAGAAGGGAACTT
 TGAAGGATCTGATCTACAAGGCAAAACCAAGGACCCCTTCTAAAGAAATACTGCAACCCTAAGAAAAAC
 CCAGGGCCTTGAAGTCCAGCAAAATAAAACATATGGGCGGCAGATATTAGAGGCACTAAAGTTTCTTCAT
 GACAAGGGATTCCCTTACGGCCACCTCCATGCAGCCAATGTGATGCTGGATGGCAACACTTGCCGGCTGC
 TAGACCTCGAAAACACTACTGCTGGGTCTGCCTTCTTCTACCGATCTACTTCACACAATTCAGGAAAAAT
 CAATACATTGGAGAGTGTAGATGTCAGCTGTTTTGGCCACTTACTCTATGAAATGACTTATGGACGACCT
 CCCGCTCCGTGCCTGTGGACTCCTTCTCCTGCATCATCCTTGGCTGTGGTGGCCGATTGGAGTCTA
 CGCTGTCTTGTGAAGCCTGTAAAAATGGCATGCCTACCGTCTCCGGCTTTACAGATGCCATTATTCAG
 TGATGTTTTACTAAACAATTCTGAAAAGCCACAGTTTAAGATTCCACAAAACTAAAAGAGGCATTGCGA
 ATTGCCAAGGAATGCATAGAGAAGAGACTCACCGAGGAACAGAAGCAGATTACCAGCATCGAAGACTAA
 CGAGAGCCAGTCACACCATGGGTCTGAGGAAGAAAGGAAAAGGAGAAAGATCTTAGCTCGAAAAGAGTC
 AAAACGATCTGCTGTTGAAAACAGTGAGGAGCAGCCAGTGAAGCACAGTAACTCCAATAACTCAGCAGGA
 TCTGGGGCAGCTCACCTCTCACATCCCCATCATCTCAAACCTCCACCCTCCACAGCAGTAGAGCATGCAC
 CACTT

ACGCGTACGCGGCCGCTCGAG - GFP Tag - GTTTAA

Protein Sequence:

>MG215766 representing NM_178279
 Red=Cloning site Green=Tags(s)

MAFMKPPAGKVLDDTVPLTAAVEASQSLQSHTEYIIRVQRGISAENSWQIVRRYSDFDLLNNSLQITG
 LSLPLPPKLLIGNMDREFIAERQRGLQNYLNVIMANHVLSNCELLKKFLDPNNYSANYTEIALQQVSMFF
 RSEPKWEVVEPLKDIGWRIRKKYFLMKIKNQPKERLVLWADLGPDKYLSKDFQCLIKLLPSCVHPYIY
 RVTFATASESSALLIRAFNEKGLKDLIYKAKPKDPFLKKYCNPKKTQGLELQQIKTYGRQILEALKFLH
 DKGFPHYHLHAANVMLDGNTCRLLDLENSLLGLPSFYRSYFTQFRKINTLESVDVHCFHLLYEMTYGRP
 PDSVPPVDSFPPASSLAVVAVLESTLSCEACKNGMPTVSRLQLMPLFSDVLLTTEKPPQFIPTKLKEALR
 IAKECIEKRLTEEQKQIHQHRRLTRAQSHHGSEEEKRRKILARKKSKRSAVENSEEQPVKHSNSNNSAG
 SGASSPLTSPSSPTPPSTAVEHAPL

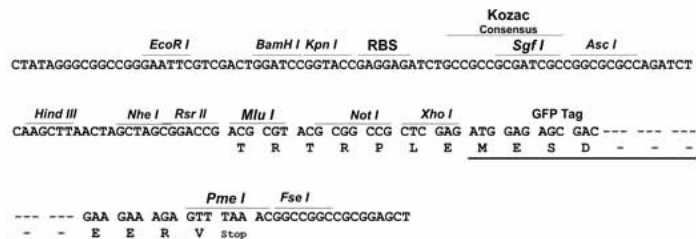
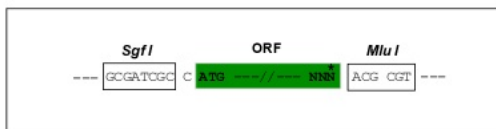
TRTRPLE - GFP Tag - V

Restriction Sites:

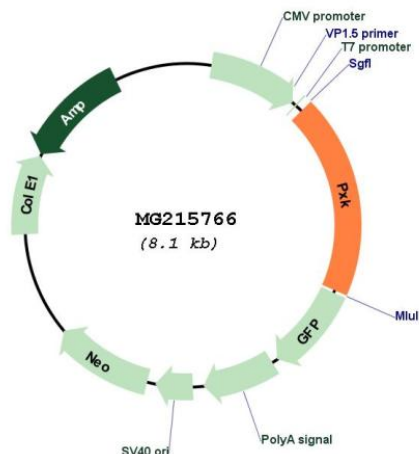
Sgfl-MluI

Cloning Scheme:

Cloning sites used for ORF Shutting:



Plasmid Map:



ACCN:	NM_178279
ORF Size:	1545 bp
OTI Disclaimer:	<p>Due to the inherent nature of this plasmid, standard methods to replicate additional amounts of DNA in E. coli are highly likely to result in mutations and/or rearrangements. Therefore, OriGene does not guarantee the capability to replicate this plasmid DNA. Additional amounts of DNA can be purchased from OriGene with batch-specific, full-sequence verification at a reduced cost. Please contact our customer care team at custsupport@origene.com or by calling 301.340.3188 option 3 for pricing and delivery.</p> <p>The molecular sequence of this clone aligns with the gene accession number as a point of reference only. However, individual transcript sequences of the same gene can differ through naturally occurring variations (e.g. polymorphisms), each with its own valid existence. This clone is substantially in agreement with the reference, but a complete review of all prevailing variants is recommended prior to use. More info</p>
OTI Annotation:	This clone was engineered to express the complete ORF with an expression tag. Expression varies depending on the nature of the gene.
Components:	The ORF clone is ion-exchange column purified and shipped in a 2D barcoded Matrix tube containing 10ug of transfection-ready, dried plasmid DNA (reconstitute with 100 ul of water).
Reconstitution Method:	<ol style="list-style-type: none">1. Centrifuge at 5,000xg for 5min.2. Carefully open the tube and add 100ul of sterile water to dissolve the DNA.3. Close the tube and incubate for 10 minutes at room temperature.4. Briefly vortex the tube and then do a quick spin (less than 5000xg) to concentrate the liquid at the bottom.5. Store the suspended plasmid at -20°C. The DNA is stable for at least one year from date of shipping when stored at -20°C.
RefSeq:	NM_178279.3
RefSeq Size:	2840 bp
RefSeq ORF:	1548 bp
Locus ID:	218699
UniProt ID:	Q8BX57
Cytogenetics:	14 4.7 cM
Gene Summary:	Binds to and modulates brain Na,K-ATPase subunits ATP1B1 and ATP1B3 and may thereby participate in the regulation of electrical excitability and synaptic transmission. May not display kinase activity.[UniProtKB/Swiss-Prot Function]