

Product datasheet for **MG215759**

Idi1 (NM_145360) Mouse Tagged ORF Clone

Product data:

Product Type:	Expression Plasmids
Product Name:	Idi1 (NM_145360) Mouse Tagged ORF Clone
Tag:	TurboGFP
Symbol:	Idi1
Synonyms:	4832416K17Rik
Mammalian Cell Selection:	Neomycin
Vector:	pCMV6-AC-GFP (PS100010)
E. coli Selection:	Ampicillin (100 ug/mL)
ORF Nucleotide Sequence:	>MG215759 representing NM_145360 Red=Cloning site Blue=ORF Green=Tags(s)

TTTTGTAATACGACTCACTATAGGGCGGCCGGAATTCGTCGACTGGATCCGGTACCGAGGAGATCTGCC
GCC**CGATCGC**C

ATGTGGCGCGGACGGACACTGGCGCGAGCGATTGGATATGCTGTTAGAGGGCGGGCCTGGAGGCGGAGC
ATGCTGCGGAGAGGATTGAAGTACAGCTCTCCGCACAGCTTCTCAGCACCTGCAGCCGGAATCTCTGTG
TCTAGGTCAGATCAGACATTCTGTCACAATGCCTGAAATAAATACCAGCCATCTTGATGAAAAACAGTT
CAGCTTCTAGCGGAGATGTGTATTCTTATTGATGAAAATGACAATAAAATGGGGCTGACACCAAGAAAA
ACTGTCACCTTAATGAAAACATCGACAAAGGATTATTACATCGAGCTTTTAGTGTCTTCTGTTTAAATAC
TGAAAATAAGCTCCTGTTACAGCAGAGATCAGATGCTAAAATTACCTTTCCAGGTTGTTTACCAATAGT
TGCTGTAGTCATCCATTAAGTAACCCAGGCGAGCTGGAAGAGAACAACGCCATTGGTGTGAAGCGAGCAG
CAAAGCGGCGCTTGAAAGCCGAGTTGGGAATACCCTTGGAAGAGGTTGATCTAAATGAAATGGATTATCT
AACAAAGATTTACTACAAGGCCAATCTGATGGTATCTGGGGTGAACATGAAGTTGATTACATTCTGTTT
CTGAGGAAGAATGTAACCTTGAATCCAGATCCAACGAGATTAAGCTATTGCTATGTATCAAAGGAAG
AAGTCAGAGAAATTTGAAGAAGCGAGCCAGTGGTGAATTAAGTTAACTCCGTGGTTTAAAGATAATTGC
AGATACTTCTCTTCAAATGGTGGGATAACTTAAACCATTGAGTCCATTTGTTGACCATGAGAAAAATA
CATAGATTG

ACGCGTACGCGGCCGCTCGAG - GFP Tag - GTTTAA



[View online »](#)

Protein Sequence: >MG215759 representing NM_145360
Red=Cloning site Green=Tags(s)

MWRGRTLARAIGYAVRGRGLEAEHAAERIEVQLSAQLLSTCSRNLCVLGQIRHSVTMPEINTSHLDEKQV
 QLLAEMCILIDENDNKIGADTKKNCHLNENIDKGLLHRAFSVFLFNTENKLLLQQRSDAKITFPGCFTNS
 CCSHPLSNPGELEENNAIGVKRAAKRRLKAEIGIPLEEVDLNEMDYLTRIYYKAQSDGIWGEHEVDYILF
 LRKNVTLNPDNEIKSYCYVVSKEEVREILKKAASGEIKLTPWFKIADTFLFKWWDNLNHLSPFVDHEKI
 HRL

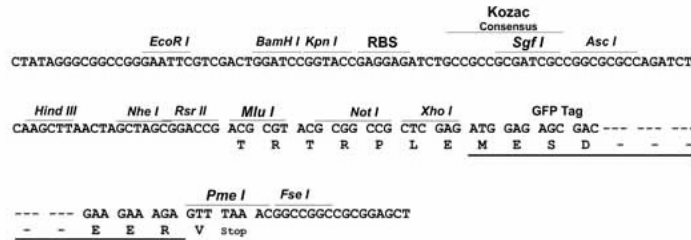
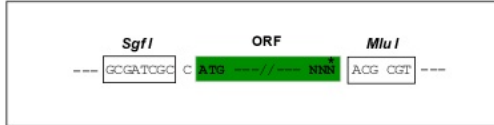
TRTRPLE - GFP Tag - V

Restriction Sites:

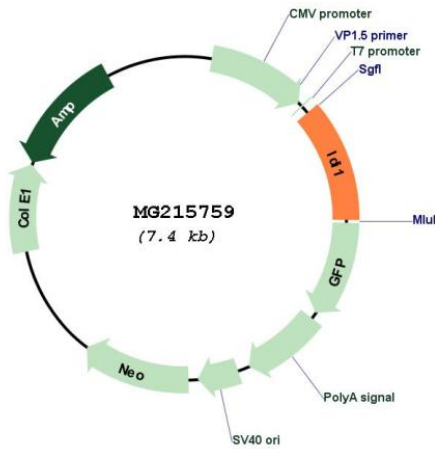
Sgfl-MluI

Cloning Scheme:

Cloning sites used for ORF Shuttling:



Plasmid Map:



ACCN: NM_145360

ORF Size: 849 bp

OTI Disclaimer:	The molecular sequence of this clone aligns with the gene accession number as a point of reference only. However, individual transcript sequences of the same gene can differ through naturally occurring variations (e.g. polymorphisms), each with its own valid existence. This clone is substantially in agreement with the reference, but a complete review of all prevailing variants is recommended prior to use. More info
OTI Annotation:	This clone was engineered to express the complete ORF with an expression tag. Expression varies depending on the nature of the gene.
Components:	The ORF clone is ion-exchange column purified and shipped in a 2D barcoded Matrix tube containing 10ug of transfection-ready, dried plasmid DNA (reconstitute with 100 ul of water).
Reconstitution Method:	<ol style="list-style-type: none">1. Centrifuge at 5,000xg for 5min.2. Carefully open the tube and add 100ul of sterile water to dissolve the DNA.3. Close the tube and incubate for 10 minutes at room temperature.4. Briefly vortex the tube and then do a quick spin (less than 5000xg) to concentrate the liquid at the bottom.5. Store the suspended plasmid at -20°C. The DNA is stable for at least one year from date of shipping when stored at -20°C.
RefSeq:	NM_145360.2 , NP_663335.2
RefSeq Size:	2883 bp
RefSeq ORF:	852 bp
Locus ID:	319554
UniProt ID:	P58044
Cytogenetics:	13 A1
Gene Summary:	Catalyzes the 1,3-allylic rearrangement of the homoallylic substrate isopentenyl (IPP) to its highly electrophilic allylic isomer, dimethylallyl diphosphate (DMAPP).[UniProtKB/Swiss-Prot Function]