

## Product datasheet for **MG215741**

### Lingo2 (NM\_175516) Mouse Tagged ORF Clone

#### Product data:

Product Type:	Expression Plasmids
Product Name:	Lingo2 (NM_175516) Mouse Tagged ORF Clone
Tag:	TurboGFP
Symbol:	Lingo2
Synonyms:	B230217C06Rik; Lern3; Lrrn6c
Mammalian Cell Selection:	Neomycin
Vector:	pCMV6-AC-GFP (PS100010)
E. coli Selection:	Ampicillin (100 ug/mL)



[View online »](#)

**ORF Nucleotide Sequence:**

>MG215741 representing NM\_175516  
 Red=Cloning site Blue=ORF Green=Tags(s)

TTTTGTAATACGACTCACTATAGGGCGGCCGGAATTCGTCGACTGGATCCGGTACCGAGGAGATCTGCC  
 GCC**GCGATCGCC**

ATGCTTCACACGGCTATACCATGCTGGCAGCCATTCTGGGTCTGGCTGTGGTGTACTCTTAATGGGAT  
 CCACCATTGGCTGTCTGCTCGCTGTGAGTGCTCCGCCAGAACAATCTGTTAGCTGCCACAGAAGACG  
 ATTGCTCGCGATCCCAGAAGGCATTCCATTGAGACCAAATCTTGGACCTGAGCAAAAATCGACTAAAG  
 AGCATAAACCTGAAGAGTTCATCTCATCTCTGTTGGAGGAGATAGACTTGAGCGACAACATTATTG  
 CCAATGTGGAGCCTGGGGCATTAAACAATCTTTAACCTGCGTTCCTCCGCCTAAAAGGCAATCGCCT  
 TAAGTTGGTCCCTTAGGAGTATCACAGGACTGTCCAACCTCACCAAGCTTGACATTAGTGAGAATAAG  
 ATTGTCATTTTGTGGACTACATGTTCCAGGATCTGCATAACCTGAAGTCTCTAGAAGTGGGGGACAATG  
 ATTTAGTGTATATCTCACACAGGGCCTCAGCGGACTACTTAGCTGGAGCAGCTCACCTGGAGAAGTG  
 CAACTTGACAGCAGTACCAACAGAAGCCCTTTCCCATCTCCGAGCCTCATCGCCCTGCATCTGAAGCAT  
 CTCAATATCAACAATATGCCTGTGTATGCCTTTAAAAGATTGTTCCACCTGAAAAACCTAGAGATCGACT  
 ATTTGGCCTTTGTTGGATTGATGCCAGCCAACAGCCTCTATGGTCTCAACCTCACGTCCCTTTCAATCAC  
 CAACACCAACCTGTCCACTGTCCCTTCTCGCCTTTAAACACCTTGATACCTGACCCACCTTAACCTC  
 TCCTACAATCCCATCAGCACTATTGAAGCTGGCATGTTCTCTGACCTGATCCGCCTACAGGAGCTTCATA  
 TAGTGGGGGCCAGCTCCGCACTATTGAGCCTCACTCCTTCCAAGGGCTCCGCTTCTCCGTGTGCTCAA  
 TGTATCTCAGAACCTGCTGGAACATTGGAAGAGAAGCTTTCTCCTCCCTAGGGCTTTGGAGGTCCTG  
 AGCATTAAACAACAACCCACTAGCCTGTGACTGCCGACTCCTCTGGCTCCTGCAGCGACAACCAACCTGC  
 AGTTTGGGGGCCAGCAGCCATGTGTGCTGGGCCAGACACCATCCGTGAGAGATCATTTAAGGATTTCCA  
 TAGCACTGCTCTTTCTTTTATTTTACCTGCAAAAAACCCAAAATCCGTGAAAAGAAGTTACAGCATCTC  
 CTCGTGGATGAAGGGCAAACGGTCCAGCTGGAGTGCAACGCTGATGGAGACCCGAGCCCGTGATTTCT  
 GGGTGACACCTCGAAGGCGTTTTATCACCAAGTCCAACGGAAGGGCCACTGTGTTGGGTGATGGCAC  
 CTTGGAAATCCGTTTTGCCAGGATCAAGACAGTGGGATGATGTTTGCATCGCGAGCAACGCTGCTGGG  
 AACGATACCTTACAGCATCTCTACTGTGAAGGGATTACGTCAGACCGCTTCTTTACGCAAACAGGA  
 CCCCTATGTACATGACTGACTCCAACGACACCGTTTCCAACGGCACTAATGCCAATACTTTCTCCCTGGA  
 CCTTAAAAAATACTGGTATCTACAGCCATGGGCTGTTTACATTCTGGGAGTGGTTTTATTTGTTTT  
 CTCCTTCTTTTGTGTGGAGCCGAGGAAAGGCAAGCACAAAAACAGATTGACCTTGAGTATGTGCCCC  
 GAAAAACAATGGTGTGTTGTGGAAGGGAGGTGGCTGGCCCCAGGAGTTCAACATGAAAATGATC

**ACGCGT**ACGCGGCCGCTCGAG – GFP Tag – GTTTAA

**Protein Sequence:**

>MG215741 representing NM\_175516  
 Red=Cloning site Green=Tags(s)

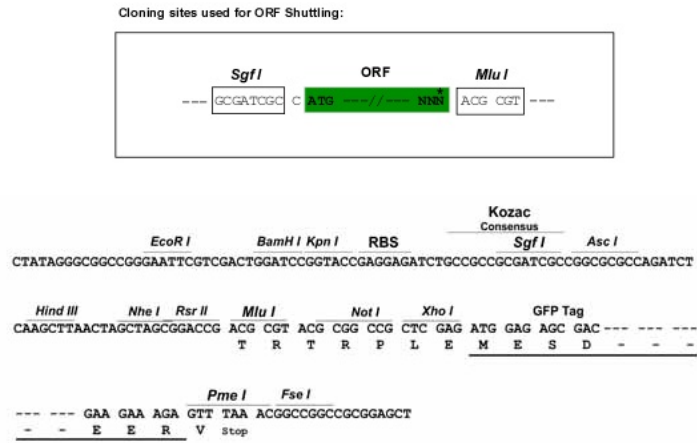
MLHTAIPCWQPFLLAVVLLMGSTIGCPARCECSAQNKSVSCHRRRLLAIEGPIPIETKILDLSKNRLK  
 SINPEEFISYPLLEEIDLSNIIANVEPGAFNNLFLNLSRLKGNRLKLVPLGVFTGLSNLTKLDISENK  
 IVILLDYMFDLHNLKSLEVDNDLVYISHRAFSGLLSLEQLTLEKCNLTAVPTEALSHLRSLIALHLKH  
 LNINMPVYAFKRLFHLKNLEIDYWPLLDLMPANSLYGLNLTSLITNTNLSTVPFLAFKHLVYLTHLNL  
 SYNPISTIEAGMFSDLIRLQELHIVGAQLRTIEPHSFQGLRFLRVLNVSQNLELLEENVFSSPRAEVL  
 SINNNPLACDCRLLWLLQRPNLQFGGQPPMCAGPDTIRERSFKDFHSTALSFYFTCKPKIREKQLHL  
 LVDEGQTVQLECNADGDPQPVISWVTPRRRFITTKSNGRATVLDGDTLEIRFAQDQDSGMYVCIASNAAG  
 NDTFTASLTVKGFSDRFLYANRTPMYMTSDNDSVSNGTNANTFSLDLKILVSTAMGCFVFLGVVLF  
 LLLFVWSRGGKHKNSIDLEYVPRKNNGAVVEGEVAGPRRFNMKMI

**TRTRPLE** – GFP Tag – V

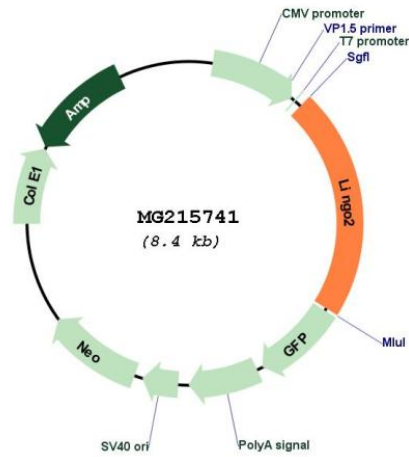
**Restriction Sites:**

Sgfl-MluI

Cloning Scheme:



Plasmid Map:



ACCN: NM\_175516  
ORF Size: 1818 bp

<b>OTI Disclaimer:</b>	The molecular sequence of this clone aligns with the gene accession number as a point of reference only. However, individual transcript sequences of the same gene can differ through naturally occurring variations (e.g. polymorphisms), each with its own valid existence. This clone is substantially in agreement with the reference, but a complete review of all prevailing variants is recommended prior to use. <a href="#">More info</a>
<b>OTI Annotation:</b>	This clone was engineered to express the complete ORF with an expression tag. Expression varies depending on the nature of the gene.
<b>Components:</b>	The ORF clone is ion-exchange column purified and shipped in a 2D barcoded Matrix tube containing 10ug of transfection-ready, dried plasmid DNA (reconstitute with 100 ul of water).
<b>Reconstitution Method:</b>	<ol style="list-style-type: none"><li>1. Centrifuge at 5,000xg for 5min.</li><li>2. Carefully open the tube and add 100ul of sterile water to dissolve the DNA.</li><li>3. Close the tube and incubate for 10 minutes at room temperature.</li><li>4. Briefly vortex the tube and then do a quick spin (less than 5000xg) to concentrate the liquid at the bottom.</li><li>5. Store the suspended plasmid at -20°C. The DNA is stable for at least one year from date of shipping when stored at -20°C.</li></ol>
<b>RefSeq:</b>	<a href="#">NM_175516.4</a> , <a href="#">NP_780725.2</a>
<b>RefSeq Size:</b>	3669 bp
<b>RefSeq ORF:</b>	1821 bp
<b>Locus ID:</b>	242384
<b>UniProt ID:</b>	<a href="#">Q3URE9</a>
<b>Cytogenetics:</b>	4 A5