

Product datasheet for **MG215732**

Vps52 (NM_172620) Mouse Tagged ORF Clone

Product data:

Product Type:	Expression Plasmids
Product Name:	Vps52 (NM_172620) Mouse Tagged ORF Clone
Tag:	TurboGFP
Symbol:	Vps52
Synonyms:	ARE1; D130068D18; D430041K17Rik; SAC2; Sacm2l; tclw5
Mammalian Cell Selection:	Neomycin
Vector:	pCMV6-AC-GFP (PS100010)
E. coli Selection:	Ampicillin (100 ug/mL)



[View online »](#)

ORF Nucleotide Sequence:

>MG215732 representing NM_172620
 Red=Cloning site Blue=ORF Green=Tags(s)

TTTTGTAATACGACTCACTATAGGGCGGCCGGGAATTCGTCGACTGGATCCGGTACCGAGGAGATCTGCC
 GCC**CGATCGCC**

ATGGCAGCCGCAGCGACCATGGCGGCCGCTGCCCGGAGCTGGTGTTCGGGCTGGGGCCTCAGATGTAG
 AGGAGGAGGAGGGCCCGCTGGGGGGGGTTCTGGACTCCAAGAACCCTACAACCTGGAGAGTTGGACAT
 CACCTCTGATGAATTCATCTTGATGAAGTGGATGTTACATCCAGGCAAACCTGGAGGATGAGTTAGTG
 AAGGAAGCTCTAAAACGGGTGTGGATCTTCGACACTATCAAAGCAGGTGGAGCTGGAGCTGCAGCAGA
 TTGAGCAGAAGTCAATCCGGGACTATATCCAAGAGAGTGAACACATAGCGTCTCTGCACAATCAGATCAC
 GGCCTGTGACGCCGCTCTGGAGCGCATGGAACAGATGCTGGGAGCTTTTCAGAGCGATCTCAGCTCCATC
 AGCTCTGAGATCCGAACCCTGCAGGAGCAGTCGGGGGCCATGAACATCCGACTTCGTAACCGACAGGCAG
 TTCGGGGGAAACTTGGGAACTTGTGGATGGGCTGGTGGTGCCCTCTGCTCTGGTCACAGCAATTCTGGA
 AGCTCCAGTGACCGAGCCAGGTTCTGGAGCAGCTACAGGAGCTGGATGCCAAGGCAGCCGCGGTGAGA
 GAGCAGGAGGCTATGGGCACCGCTGCCTGTGCTGACGTCAGAGGCGTGCTGGACCGGCTCCGGGTCAAGG
 CAGTGACGAAGATCCGGGAGTTTATTCTCCAGAAGATCTACTCCTTCAGAAGGCCATGACCAACTACCA
 GATCCCCCAGGCGGCCCTGCTGAAGTACAGTTTTTCTATCAGTTCCTGCTGGTAATGAGCGTGTCTACA
 GCCAAGGAGATCAGGGATGAGTACGTAGAGACGCTGAGCAAGATCTACCTGTCCTACTACCGATCCTATG
 TGGGGCGGCTCATGAAAGTGCAGTACGAGGAAGTTGCTGAGAAAGACGACCTAATGGGTGTTGAAAGCAC
 AGCAAAGAAAGGCTTCTCTCGAAGCCGTCCTCCGAAGCAGGAACACCATCTTTACCCTTGGCACTCGT
 GGTACTGTCTATCACCAGCCGAGCTGGAGGCCCCATCCTAGTGCCCACTACTGCCAACGTGGAGAGC
 AGAGGTATCCATTGGAAGCGCTCTCCGAGCAGCACTATGCCCTCCTCGACAATTCTTGCCGTGAATA
 TCTTTTCATCTGTGAATTTTTTCATCGTGTCTGGCCCGGCTGCACATGACCTGTTCCACGCCGTCATGGGC
 CGCAGCTCTCCATGACGCTGAAACACCTGGAGTCTACCTGGCTGACTGCTACGATGCCATTGCTGTTT
 TTCTCTGTATCCACATTGTTCTCCGGTTCGCAACATTGCAGCGAAGAGGGACGTCCTGCCCTGGACAG
 GTACTGGGAGCAGGTGCTTGCTTGCTGTGGCCTCGGTTTGAGCTGATCCTGGAGATGAATGTCCAGAGT
 GTCCGAGCACTGACCCCGAGCCTTGGGGGACTGGACTCGGCCCACTATATCACACGCCGCTATG
 CTGAGTTCTCTCTGCACTTGTGACATCAACCAGACGATCCCCAATGAACGCACGCTGCAGCTCCTGGG
 ACAGCTCCAGGTGGAGGTGGAGAATTTTGTCTCCGAGTGGCTGCAGAGTTCTCCTCCAGGAAGGAGCAG
 CTTGTGTTTCTGATCAACAATATGACATGATGCTCGGGTGTGATGGAGCGGGCTGCTGATGACAGCA
 AAGAGGTGAAAAGTTTCCAGCAGCTGCTCAATGCTCGGACACAGGAGTTCATTGAGGAGCTGCTGTCTCC
 CCCCTTCGGGGTCTGGTGGCATTCTGTAAGGAGGCTGAAGCCTTGATTGAGCGTGGGCAGGCTGAGCGG
 CTCCGAGGGGAGGAAGCCGAGTCACTCAGCTGATCCGTGGCTTTGGTAGTTCTGGAAGGCATCAGTGG
 AGTCCCTGAGTCAAGATGTAATGCGAAGTTTTACCAACTCCGAAATGGAACCAGCATATCCAGGGGGC
 GCTGACCCAGCTGATCCAGCTCTACCATCGTTCCACCGGGTGTGTCTCAGCCCCAGCTCCGCGCACTC
 CCGGCCAGGGCCGAGCTCATCAACATCCATCACCTCATGGTGGAGCTGAAGAAACACAAGCCGAACCTC

ACGCGTACGCGGCCGCTCGAG - GFP Tag - GTTTAA

Protein Sequence: >MG215732 representing NM_172620
 Red=Cloning site Green=Tags(s)

```

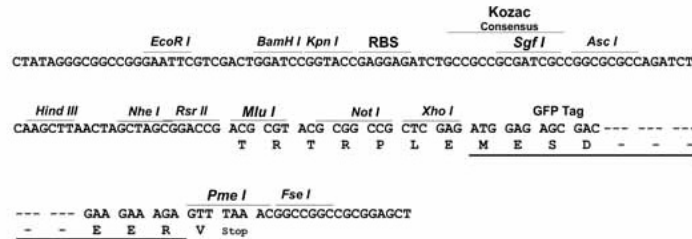
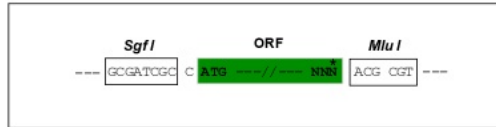
MAAAATMAAAARELVLRAGASDVVEEEGPLGGGSGLQEPLQLGELDITSDEFILDEVDVHIQANLEDELV
KEALKTGVDLRHYSKQVELELQQIEQKSIRDYIQESENIALHNQITACDAVLERMEQMLGAFQSDLSSI
SSEIRTLQEQSGAMNIRLNRNQAVRGKLGELVDGLVVPVSAVTAILEAPVTEPRFLEQLQELDAKAAAVR
EQEAMGTAACADVRGVLDRLRVAVTKIREFILQKIYSFRKPMNTNYQIPQAALLKYRFFYQFLLGNERAT
AKEIRDEYVETLSKIYLSYYRSYVGRMLMKVQYEEVAEKDDLMGVEDTAKKGFFSKPSLRSRNTIFTLGTR
GTVISPAELEAPILVPHTAQRGEQRYPFALFRSQHYALLDNSCREYLFICEFFIVSGPAAHDLFHAVMG
RTLSMTLKHLESYLADCYDAIAVFLCIHIVLFRFNIAAKRDVPALDRYWEQVLAALLWPRFELILEMNVQS
VRSTDPQRLGGLDTRPHYITRRYAEFSSALVSINQTI PNERTLQLLQQLQVEVENFVLRVAAEFSSRKEQ
LVFLINNYDMMLGVL MERAADDSKEVESFQQLLNARTQEFIEELLSPPFGLLVAFVKEAEALIERGQAE
LRGEEARVTQLIRGFGSSWKASVESLSQDVMRSFTNFRNGTSIIQGALTQLIQLYHRFHRVLSQPQLRAL
PARAELINIHMLMVELKKHKPNF
  
```

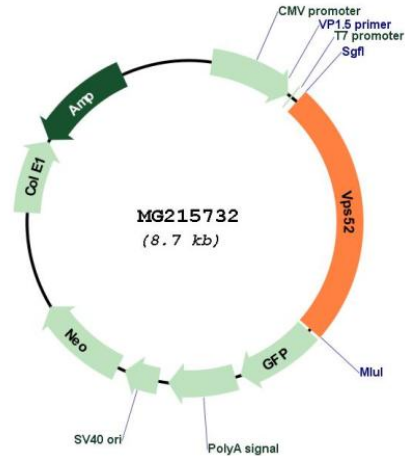
TRTRPLE - GFP Tag - V

Restriction Sites: SgfI-MluI

Cloning Scheme:

Cloning sites used for ORF Shutting:



Plasmid Map:


ACCN: NM_172620

ORF Size: 2169 bp

OTI Disclaimer: The molecular sequence of this clone aligns with the gene accession number as a point of reference only. However, individual transcript sequences of the same gene can differ through naturally occurring variations (e.g. polymorphisms), each with its own valid existence. This clone is substantially in agreement with the reference, but a complete review of all prevailing variants is recommended prior to use. [More info](#)

OTI Annotation: This clone was engineered to express the complete ORF with an expression tag. Expression varies depending on the nature of the gene.

Components: The ORF clone is ion-exchange column purified and shipped in a 2D barcoded Matrix tube containing 10ug of transfection-ready, dried plasmid DNA (reconstitute with 100 ul of water).

Reconstitution Method:

1. Centrifuge at 5,000xg for 5min.
2. Carefully open the tube and add 100ul of sterile water to dissolve the DNA.
3. Close the tube and incubate for 10 minutes at room temperature.
4. Briefly vortex the tube and then do a quick spin (less than 5000xg) to concentrate the liquid at the bottom.
5. Store the suspended plasmid at -20°C. The DNA is stable for at least one year from date of shipping when stored at -20°C.

RefSeq: [NM_172620.4](#)

RefSeq Size: 2766 bp

RefSeq ORF: 2172 bp

Locus ID: 224705

UniProt ID: [Q8C754](#)

Cytogenetics: 17 B1

Gene Summary: Acts as component of the GARP complex that is involved in retrograde transport from early and late endosomes to the trans-Golgi network (TGN). The GARP complex is required for the maintenance of the cycling of mannose 6-phosphate receptors between the TGN and endosomes, this cycling is necessary for proper lysosomal sorting of acid hydrolases such as CTSD. Acts as component of the EARP complex that is involved in endocytic recycling. The EARP complex associates with Rab4-positive endosomes and promotes recycling of internalized transferrin receptor (TFRC) to the plasma membrane.[UniProtKB/Swiss-Prot Function]