

Product datasheet for **MG215727**

Tex2 (NM_198292) Mouse Tagged ORF Clone

Product data:

Product Type:	Expression Plasmids
Tag:	TurboGFP
Symbol:	Tex2
Synonyms:	4930568E07Rik; AI553404; Def-5; Taz4
Mammalian Cell Selection:	Neomycin
Vector:	pCMV6-AC-GFP (PS100010)
E. coli Selection:	Ampicillin (100 ug/mL)

ORF Nucleotide Sequence: >MG215727 representing NM_198292
Red=Cloning site Blue=ORF Green=Tags(s)

TTTTGTAATACGACTACTATAGGGCGCCGGGAATTCGTGACTGGATCCGGTACCGAGGAGATCTGCC
GCCGCGATCGCC

ATGACAAGTCTGAATGGTCGCCATGCTGAGAAAACCATTGACATGCCAAAACCATCAGCCCCAAAGTGC
ACGTGCAAAGGTCTGTGTCCCAGACACCATCGCCATTCATTTCTCGGCTTCCGGGGAGGAGGAGGAGGA
AGAGGAGGAGGAGTTCCAGGGCTACCTGGAGGAGGGCTAGATGACCAAAGCATTGTAACGGGGCTTGAA
GCCAAGGAGGACCTGTATCTTGAATCCCAGGGTGGCCATGACCCTGCAGGCCCGCTCGACGGCCCCCTG
CAGATGGGCTGTCTGTGTCTGAGTCCCCTGCCATTTTGCCTGTCTCTGAGAACTGTAAAAGTCTGTGA
GTCCCCGTCTCCAGCACTGCAGGTATTAAGTCCAGTGCCATTGGCTCTGTCTCCAGGATCATCTTCATCT
GGACCCTTAGCTAGTTCTCCCAGTGTGTCTCCCTTTCTGAGCAGAAAACCAGTTCTTCGTCTCCACTGT
CTTCTCCTTCCAAGTCCCCTGTCTGTCTCCAGTGCCTCGTCTCGGCCCTCTCAAGCGCAAAGCCCTT
CATGAGCCTGGTGAAGTCCCTGTCAACTGAGGTGGAGCCAAAAGAGTCCCCCACCCTCCGAGGCACAGA
CACTTGATGAAGACTCTGGTCAAGTCTCTGTCCACAGACACTTCCCGGCAGGAGTCCGACACCGTGTCT
ACAAGCCCCGACTCCAACTCAACTGCACCTCTTCAAACAGTTCACACAGCCACGGAACACGGGTGG
AGACTCCAAGACTGCGCCTTCTCCCCCTGACTTCGCCCTCTGACTCGTTCTTTTAAAGTGCC
GAAATGGAGGCAAAAATCGAAGACTAAGCGACGCTTTCTGAAGTTATCTATGAGCCCTCCAGCTCC
TCAGCAAGATCATCGGGGAGGAGCGGCAGCCATAGGCCAAAGCCTTATCTGCAAGTGCTTCAGAGCT
CTCCAGCCTGTCCGGCTTGAACGGCACTTGGAAAGCAATAACTACAGCATCAAGGAGGAGGAGGGGAC
TCGGAGGGGAAGGCTACGGCAGGACTCCAACACCTCCAGGAGCAGCACCTGAAGCCACTGAAGACG
CCTCGAAGGAAGTGGAGCCAAAGGTTCCAGGCGAGTAGTCTGAAGGACTTAGGTCTGAAGACAAGTTC
TCTGTTCTTGAGAAGTGTCTGTCTGCTTTAGTGAGCAAGGAGGATGAAGAGTTCTGTGAAGTGTAC
ACGGAGGACTTTGAGCTGGAGACTGAGGGCGAGGGGAGACTTGATAAGACCCTCGATCTCCCCCTCAAGC
CAGAGGTGCTTGCACGCATGGCGTGGCTCTGGAGAGCGAGGATGAAGAGGACTCGGCCACCGAGCACCA
GGAGTTACCTGTAAGACGCTCGGCTTCTTATAATGTGTGTCTACGCGTACCTCATCTCCCACTCCCC
TACTACATGAGTGGCTCTTCTGGCGTCCGCTCGGCTTCATGACTGCACTGCGATGATTTGTTCT



TTACACCACCAAGTGCTCACAAACACCACAAATCACTCAAAGCTCTGCGGCACCAGAGCACGAGATCCCT
 GGACATCAAGGAGCCGAAATACTAAAGGGATGGATGAATGAGATTTACAACATGATCCAGAACTTAC
 CACGCGACTTTGACGCACTCAGTCTTTGTCCGGCTCGAGGGTGAACCTTAAGACTTTCAAAGCCCAACA
 AAAACATATCCAGGAGGGCAAGCTACAATGAGACAAAGCCAGAGGTCACCTACATCAGCCAGAAAATCTA
 TGACCTCTCAGACAGCAAGATTTATCTTGTACCTAAAAGCTTGGCTCGAAAGCGAATCTGGAATAAGAAG
 TACCCCATTTGCATTGAACTTGGTCGCAAGATGACTTTATGTCTAAGGCGCAGTCTGATAAGGAAGCTA
 CTGAGGAGAAGCCGCTCCTGAGAAAGAGCTGCCGAGCGAAGACCTCAAGAAGCCACCCAGCCTCAAGA
 GGGGACGAAGTCTAGCCAGCGAGACCAATACTGTATCTGTTTGGGAGAACGGGCCGAGAGAAAAGAGGAG
 TGGTTCAGGCGGTTTCATCTGGCCTCGAGGCTGAAGTCAGAGCTCAGGAAGCCGGCGGGTGTCTTGAA
 GTAATCAGGGCTCTGCCCGCACACAGCAGGCACAGCAGTCCCTCGGGCACCTGAGCCACAGCCCGCAG
 CAGCAGCAAAGGCAGCGTGGAGGAAATGATGTCCAGCCAAAGCAGAAGGAACGGTGGGACGCGTCCGA
 CAGAAGATGCTCCTAGACTACAGTGTGACATGGGCAGGTGTGTGCCCCAGGACAACCGAAGCCCCGACA
 GGAGCCCGTGCAGAGTGCAGAGAGCAGCCACAGCTTCAAGAAGTTGCCAGAGGCCCCACCCTCTGA
 GGAGGAAGAACAGGAAGCCTGGGTGAATGCTTTGCTTGAAGAATATTTGGGACTTCTGGGCGAGAAA
 TACTGGTCTGATGTGGTGTGAAGAAAATCCAGATGAAACTCAGCAAAATTAAGCTCCCTACTTTATGA
 ATGAACTAACTGACAGAGCTTGACATGGGTGTAGCTGTGCCAAAATCCTTCAGGCCTTCAAGCCTTA
 TGTTGATCACCAAGGACTCTGGATCGATTTGGAATGTCTTACAATGGGTCTTTCTGATGACTCTGGAA
 ACCAAAATGAACTTGACCAAATAGGTAAGAGCCTCTTGTGAAGCCCTGAAGGTTGGAGAAAATGGCA
 AAGAAGGTTGCAGGCCAGGCATACTGTCTGGCTGACAGTGTGAAGAATCCTCCAGTGTGCTGCTCCTC
 TGAGGAAGATGACCCACCAGAACCCTGCTGGAGACAAACAGCCGCTCCCGGGGCTGAAGGGTACGTT
 GGAGGTCATCGAACAGCAAGATTATGAGGTTTGTGATAAGATCACCAATCAAAATATTTCCAAAAAG
 CAACAGAGACAGAATTCATTAAGAAGATCGAAGAAGTCTTAATACACCACTGCTGCTAACTGTGGA
 AGTGAAGAGTGTGAGGGACCTTGGCGTCAACATCCCCCACCACCGACTGACCGGATATGGTATGGT
 TTCCGGAAGCCACCGTATGTGGAGCTGAAAGCTCGGCCAAAATTTGGAGAGAGAGAAGTGACTTTAGTTC
 ACGTGACAGAGTGGATTGAGAAGAACTGGAGCAGGAGCTTCAGAAAGTGTGTCATGCCAAACATGGA
 TGACGTTTATATTCCTATAATGCACTCGGCCATGGACCCTCGCTCCACTTCTGCTCTTGAAGAGCCA
 CCTGTGGAGACCTCTGATCAGCTG

AGCGGACCGACGCGTACGCGGCCGCTCGAG - GFP Tag - GTTTAA

Protein Sequence:

>MG215727 representing NM_198292
 Red=Cloning site Green=Tags(s)

MTSLNRGHAECTIDMPKPSAPKVHVQRVSRDTIAIHFASGEEEEEEEEFRGYLEELDDQSIIVTGLE
 AKEDLYLESQGGHDPAGPVSTAPADGLSVSESPAILPVSENTVKLLESPAPALQVLSVPLALSPGSSSS
 GPLASSPSVSSLSEQKTSSSSPLSSPSKSPVLSASSASSALSSAKPFMSLVKSLSTEVEPKESPHPPRHR
 HLMKTLVKSLSTDSRQESDTSYKPPDSKLNHLFKQFTQPRNTGGDSKTAPESSPLTSPSDTRSFVKVP
 EMEAKIEDTKRRLSEVIYEPFQLLSKIGEEESGSHRPKALSASASELSSLGSLNGHLESNNYSIKEEEGD
 SEGEGYSDSNTSRDHLKPTEDASKEVEPKGSQASSLKDLGLKTSLSLVEKCSLSALVSKEDDEEFCELY
 TEDFELETEGEGRLDKTLDLPLKPEVLASDGVALESEDEEDSATEHQELPVKTLGFFIMCVYAYLILPLP
 YYMSGLFLGVGLGFMTAVCMIWFFTPPSAHKHHKSLKALRHQSTRSLDIKEPEILKGMWNEIYNYDPETY
 HATLTHSVFVRLEGGTLRLSKPNKNISRRASYNETKPEVTYISQKIYDLSDSKIYLVKSLARKRIWNKK
 YPICIELGRQDDFMSKAQSDKEATEEKPPPEKELPSEDLKKPPQPQEGTKSSQRDPILYLFGRTGREKEE
 WFRRFILASRLKSELKPKPAGVSGKSGLLPAHSRHSPPSGHLSHRSSSKGSVEEMMSQPKQKELVGSVR
 QKMLLDYSVYMGRCVQDNRSPHRSPVQSAESSPTASKKLEAPPSEEEEQEAWVNALLGRIFWDFLGEK
 YWSDVVSKKIQMKLSKIKLPYFMNELTLTELDMGVAVPKILQAFKPYVDHQGLWIDLEMSYNGSFLMTLE
 TKMNLTKLKEPLVEALKVGEIGKEGCRPRAYCLADSDEESSAGSSEEDDPPEPTAGDKQPLPGAEGYV
 GGHRTSKIMRFVDKITKSKYFQKATEFEFKKKIEEVSNTPLLLTVVEVQECRGTALAVNIPPPPTDRIWYG
 FRKPPYVELKARPKLGEREVTLVHVTIEWIEKKLEQELQKVFVMPNMDVYIPIIMHSAMDPRSTSLCKEP
 PVETSDQL

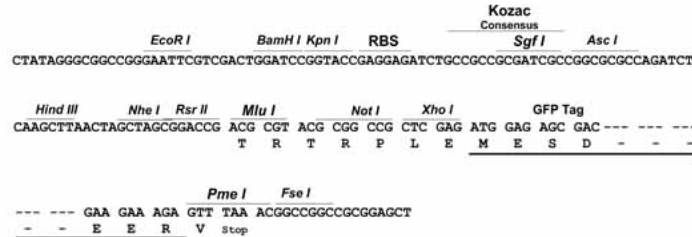
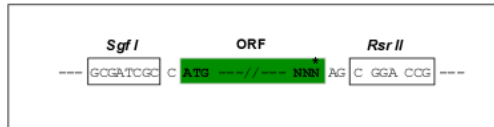
SGPTRRRLE - GFP Tag - V

Restriction Sites:

Sgfl-RsrII

Cloning Scheme:

Cloning sites used for ORF Shuttling:



ACCN: NM_198292

ORF Size: 3384 bp

OTI Disclaimer: The molecular sequence of this clone aligns with the gene accession number as a point of reference only. However, individual transcript sequences of the same gene can differ through naturally occurring variations (e.g. polymorphisms), each with its own valid existence. This clone is substantially in agreement with the reference, but a complete review of all prevailing variants is recommended prior to use. [More info](#)

OTI Annotation: This clone was engineered to express the complete ORF with an expression tag. Expression varies depending on the nature of the gene.

Components: The ORF clone is ion-exchange column purified and shipped in a 2D barcoded Matrix tube containing 10ug of transfection-ready, dried plasmid DNA (reconstitute with 100 ul of water).

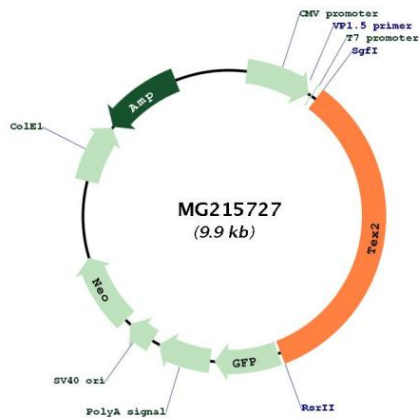
- Reconstitution Method:**
1. Centrifuge at 5,000xg for 5min.
 2. Carefully open the tube and add 100ul of sterile water to dissolve the DNA.
 3. Close the tube and incubate for 10 minutes at room temperature.
 4. Briefly vortex the tube and then do a quick spin (less than 5000xg) to concentrate the liquid at the bottom.
 5. Store the suspended plasmid at -20°C. The DNA is stable for at least one year from date of shipping when stored at -20°C.

Note: Plasmids are not sterile. For experiments where strict sterility is required, filtration with 0.22um filter is required.

RefSeq:	NM_198292.3, NP_938034.2
RefSeq Size:	4947 bp
RefSeq ORF:	3387 bp
Locus ID:	21763
UniProt ID:	Q6ZPJ0
Cytogenetics:	11 69.46 cM

Gene Summary: During endoplasmic reticulum (ER) stress or when cellular ceramide levels increase, may induce contacts between the ER and medial-Golgi complex to facilitate non-vesicular transport of ceramides from the ER to the Golgi complex where they are converted to complex sphingolipids, preventing toxic ceramide accumulation.[UniProtKB/Swiss-Prot Function]

Product images:



Circular map for MG215727