

Product datasheet for **MG215721**

Cnm4 (NM_033570) Mouse Tagged ORF Clone

Product data:

Product Type:	Expression Plasmids
Product Name:	Cnm4 (NM_033570) Mouse Tagged ORF Clone
Tag:	TurboGFP
Symbol:	Cnm4
Synonyms:	5430430O18Rik; Acdp4
Mammalian Cell Selection:	Neomycin
Vector:	pCMV6-AC-GFP (PS100010)
E. coli Selection:	Ampicillin (100 ug/mL)



[View online »](#)

ORF Nucleotide Sequence:

>MG215721 representing NM_033570
 Red=Cloning site Blue=ORF Green=Tags(s)

TTTTGTAATACGACTCACTATAGGGCGGCCGGGAATTCGTCGACTGGATCCGGTACCGAGGAGATCTGCC
 GCC**CGCATCGCC**

ATGGCGCCGGGGGGCGGGGGCGGGCGGGACGGCTGGCCGGCCCGAGGGCGCCTCCTCTGGCTGCGC
 TGCTGCTGCTATGGACCGGGCGGCCAGCGGCCAGAGCAGCCCCAGCAGAGCGTGATCCTAGGCATGAG
 GCTAGCGAGCTGCAACAAGTCGTGCGGGATGAACCCGGATGGCATCATCTTCGTGTCGAGGGCAGCAGC
 GTGAACCTGAGGCTCTATGGCCACAGCCTGGGCGATATCTCCAGCAACCTGATCTCCTTACCGAGGTGG
 ACGACGCCGAGGCGGTCCACAACCCACCAACTGCCTGGAGCTACCAAGGACTTAGTGGTCCAGCGGCT
 GGTCAACGTGAGCCGCGGAACACGTGCGGGATGCTAGTGGTATTACCAAGTTCCTGCGGAGGAGCGAG
 AACATGAAGCTGTACGCGCTGTGCACCCGGCCCGGGCCGACGGGCCCTGGACCAGATGGACGGACAAGG
 ACTCCCTGCTCTCATGGTGGAGGAGCATGGGAGGTTTCTGCCGCTTGCTGCACATCCTTCTCGTTAT
 GGTGCTGTTGGTCTGTGGGCATCTTTCTGGCCTCAACCTGGGGCTTATGGCCCTGGACCCGATGGAG
 CTGCGCATCGTGCAAGCTGTGGAAGTGAAGGAGAGAAAGTATGCTCGCAAGATAGAGCCCATCAGGC
 GCAAGGGCAACTACCTGCTCTGCTCGCTGCTCCTGGGGAACGTGCTAGTCAACACCTCCCTCACCATCCT
 TCTAGACAACCTCATCGGGTCTGGCATCATGGCAGTGGCCTCCTTACCATTGGCATTGTCATCTTTGGG
 GAGATCTTACCTCAAGCCCTGTGCTCCCGGCACGGGCTGGCTGTGGGTGCCAACACTATTGTTCTCACCA
 AAGTCTTTATGCTCCTCACTTTTCCCTTGGATTTCCCATTAGCAAACCTCTGGACTTCGTCTTAGGTCA
 GGAGATTGCGACTGTTTACAATCGGGAGAAGCTGATGGAGATGTTGAAGTGACAGAGCCCTATAATGAC
 TTGGTGAAGGAGGAGTTAAATATGATCCAGGGTCCCTGGAACCTAAGGACCAAACTGTGGAGGATATCA
 TGACCCAGCTACACGACTGCTTCATGATCCGCACTGATGCCATTCTGGACTTCAACACCATGTCCGAGAT
 TATGGAGAGTGGCTACACTCGCATTCTGTGTTTGAAGATGAGCAATCCAATATTGTAGATATCCTGTAT
 GTCAAAGACTTGCTTTTGTGACCCGGATGACTGCACCCCGCTCAAGACCATCACTCGCTTCTACAACC
 ACCCGGTACATTTGTTTTTATGACACCAAGCTGGATGCCATGCTAGAGGAATTTAAGAAGGGCAAGTC
 CCACCTGGCCATCGTGCAAGGTGAACAATGAGGGCGAGGGCGACCCCTTCTACGAGGTGCTGGCCTG
 GTCACTCTGGAGGACGTCATCGAGGAGATCAAGTCCGAGATCCTCGATGAGTCGGACATGTACTG
 ATAATCGGACCCGAAACGGGTGTCCTGAAAAACAAGCGTGACTTCTCTGCCTCAAGGACACTGACAA
 TGAACCTAAAGTAAAACTCACCTCAGCTTCTTCTGGCTGCTCATCGCTTCTGGCCACAGAGGTGCC
 CAGTTTAGCCCTCTCTGATGTCAGAGAAGATCCTGCTCCGGCTGCTCAAGTACCCGACGTCATTACAGG
 AGCTCAGGTTCAATGAGCACAACAGTACTGCGTTTCGCCACTACCTGTACACCCGAAACAAGCCGGCCGA
 TTGCTTCGTCCTCATCCTGCAGGGGAAGGTGGAGGTAGAAGCAGGCAAGGAGAACATGAAGTTTGAAGC
 GGCGCCTTCTCGTACTATGGAACCATGGCACTCCTCGTGGCACCCCCAGACCCGGTCCCGAGCCCTCCAA
 CTCCACTCAGCCGCTCAGCTTCCCTCAGTTACCCGGACCCCAACACAGACTTGACATCCACCTCCCTGGC
 AGGCAGCAACCAGTTTGGCAGCTGCATTCTGGCCAGTATGTCTCTGACTTCAAGTGTGCGGGCGCTCAG
 GACCTGCAGTACATTAAGATCACAAGGCAGCAGTACCAGAATGGGCTGATGGCCTCCCGCATGGACAACA
 GCCCCAGCCTACCTTCGATGGCTGTGCCACCTGCTCAGAGAACTTTATGGAGAGGCTGAGCTGCCCC
 GGTGGACGAGACCAGACTCTTCTCAATGAACGCAACTCGTTGCTGCACAGAGCCTCCGAAGAGGAAACC
 ATC

ACGCGTACGCGGCCGCTCGAG - GFP Tag - GTTTAA

Protein Sequence: >MG215721 representing NM_033570
 Red=Cloning site Green=Tags(s)

```

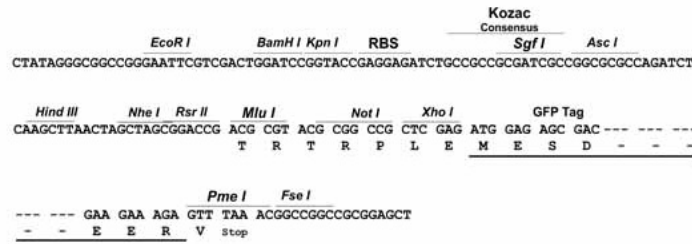
MAPGGGGRRDGWPARGRLLLAALLLWTRAASGQSSPQQSVILGMLASCNKSCGMNPDGIIFVSEGST
VNLRLYGHSLGDISSNLISFTEVDDAEAVHNSTNCLLELTKDLVVQRLVNVSRGNTSGMLVVITKFLRRSE
NMKLYALCTRPRADGPWTRWTDKDSLLFMVEEHGRFLPLWLHILLVMVLLVLSGIFSGNLGLMALDPME
LRIVQNCGTEKERKYARKIEPIRRKGNVLLCSLLLGNVLVNTSLTILLDNLIGSGIMAVASSTIGIVIFG
EILPQALCSRHGLAVGANTIVLTKVFMLLTFPLSFPISKLLDFVLGQEIRTVYNREKLMEMLKVTEPYND
LVKEELNMIQGALELRKTVEDIMTQLHDCFMIRSDAILDFTNTMSEIMESGYTRIPVFEDEQSNIVDILY
VKDLAFVDPDDCTPLKTI TRFYNHVPVHFVFHDTKLDAMLEEFKKGKSHLAIVQKVNEGEGDPFYEVLGL
VTLEDVIEEIIKSEILDESDMYTDNRTRKRVSVKNKRDFSFAKDTDNELKVKISPQLLAAHRFLATEVP
QFSPSLMSEKILLRLLKYPDVIQELRFNEHNRYCVRHYLYTRNKPADCFVLIQKGVEVEAGKENMKFET
GAFSYYGTMALSVAPPDRSPALPTPLSRASLSYPDRNTDLTSTSLAGSNQFGSCILGQYVSDFSVRALT
DLQYIKITRQQYQNLMASRMDNSPQPTFDGCATCSENFMERPELPPVDETTTLLNERNLSLLHRASEEET
I
  
```

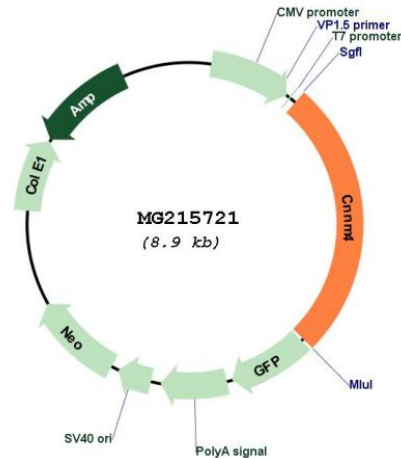
TRTRPLE - GFP Tag - V

Restriction Sites: SgfI-MluI

Cloning Scheme:

Cloning sites used for ORF Shuttling:



Plasmid Map:


ACCN: NM_033570

ORF Size: 2313 bp

OTI Disclaimer: The molecular sequence of this clone aligns with the gene accession number as a point of reference only. However, individual transcript sequences of the same gene can differ through naturally occurring variations (e.g. polymorphisms), each with its own valid existence. This clone is substantially in agreement with the reference, but a complete review of all prevailing variants is recommended prior to use. [More info](#)

OTI Annotation: This clone was engineered to express the complete ORF with an expression tag. Expression varies depending on the nature of the gene.

Components: The ORF clone is ion-exchange column purified and shipped in a 2D barcoded Matrix tube containing 10ug of transfection-ready, dried plasmid DNA (reconstitute with 100 ul of water).

Reconstitution Method:

1. Centrifuge at 5,000xg for 5min.
2. Carefully open the tube and add 100ul of sterile water to dissolve the DNA.
3. Close the tube and incubate for 10 minutes at room temperature.
4. Briefly vortex the tube and then do a quick spin (less than 5000xg) to concentrate the liquid at the bottom.
5. Store the suspended plasmid at -20°C. The DNA is stable for at least one year from date of shipping when stored at -20°C.

RefSeq: [NM_033570.2](#), [NP_291048.2](#)

RefSeq Size: 4582 bp

RefSeq ORF: 2316 bp

Locus ID: 94220

UniProt ID: [Q69ZF7](#)

Cytogenetics: 1 15.28 cM

Gene Summary:

Probable metal transporter. The interaction with the metal ion chaperone COX11 suggests that it may play a role in sensory neuron functions (By similarity). May play a role in biomineralization and retinal function.[UniProtKB/Swiss-Prot Function]