

Product datasheet for **MG215718**

Akap8 (NM_019774) Mouse Tagged ORF Clone

Product data:

Product Type:	Expression Plasmids
Product Name:	Akap8 (NM_019774) Mouse Tagged ORF Clone
Tag:	TurboGFP
Symbol:	Akap8
Synonyms:	1200016A02Rik; AA673585; AKA; AKAP-8; AKAP95; AU015639
Mammalian Cell Selection:	Neomycin
Vector:	pCMV6-AC-GFP (PS100010)
E. coli Selection:	Ampicillin (100 ug/mL)



[View online »](#)

**ORF Nucleotide
Sequence:**

>MG215718 representing NM_019774
 Red=Cloning site Blue=ORF Green=Tags(s)

TTTTGTAATACGACTCACTATAGGGCGGCCGGGAATTCGTCGACTGGATCCGGTACCGAGGAGATCTGCC
 GCC**CGGATCGCC**

ATGGAGCAAGGCTACGGAGGCTATGGGCGATGGAGTGCTGGACCTGCCAACACCCAGGGTACATATGGAA
 GTGGTATGACCAGCTGGCAAGGTTATGAAAACACTACAATACTACAATGCCCAGAACCAGTGTCCCTGC
 AGGAACACCCCTATAGTTACGGCCAGCCTCATGGGAGGCCACCAAGACCAATGATGGTGGCCTGGCAGT
 GGGAGCCCTGCCATGCATGTGGCGTCTTTTGGCCAGAGCCATGTACCGACAACCTCAGACTCGCTCATTG
 CCAAGATCAATCAACGTTTGGACATGTTGTCTAAGGAAGGAGGCAGGGGTGGGATCAGCAGCGGTGGGGA
 GGGCGTGCAGGACCGAGACAGCTCCTCCGCTTCCAGCCATACGAGTCTACGACGCCAGGCCCTGTATA
 CCTGAGCATAATCCCTACCGCCCGGCTACGGTTATGATTATGACTTTGACTTTGGAACTGACCGCAATG
 GTAGCTTTGGTGGGACATCAACGACTGTCCGGACCCAGCCCAGAGCGGGGCTCCCTTGATGGTTTCTT
 GAGGGGCCGGGGCCAGGGCCGCTTCCAAGACCGGAGCAACTCCAGCACCTTCATACGTAGTGACCCCTTC
 ATGCCACCCTCAGCCTCGGAGCCCTTATCCACTACGTGGAATGAGCTGAACTACATGGGTGGCCGTGGTC
 TCGGTGGGCCCTCCACCAGCAGGCCACCTCCTTCCCTTCTCTCCAGTCCATGGCCCTGACTACAGCAT
 GATGGGCATGCAGGGGTGGGCGGTTTTGGTGGTACCATGCCTTACGGATGTGGCCGGTCCCAGACGCGG
 ATACGGGATTGGCCTAGAAGGAGGGGTTTTGAACGCTTTGGACCAGACAACATGGGCAGGAAGCGGAAGC
 AGTTTCCATTGTATGAAGAACCTGATGCCAAACTGGCCCGTGCTGACAGTGACGGAGATCTGTCTGAAAA
 CGATGATGGAGCTGGTGACTTAAGATCAGGAGATGAAGAATTGAGGGGGAGGATGACTTGTGTGACTCC
 AGAAGCAGAGAGGAGAAAAGGAGGACGAGGATGAGGATGTGAAGAAGAGACGGGAGAAAACAAGGAGGA
 GAGACAGGATGCGGGACCGAGCAGCTGACAGGATTCAGTTTGCCTGTTCTGTATGCAAGTTTCGTAGCTT
 TGAAGATGAAGAAATTCAAAAGCATCTGCAAAGTAAATTTCAAAAGAGACTTTGCGATTATAAGTACC
 AAAGTCCCGACAAAGACAGTAGAATTCCTCCAGGAGTACATCATAAACAGGAATAAGAAAATTGAGAAAC
 GGCGTCAGGAGTTGTTGGAGAAGGAGAGCCCTAAACCCAAACCAGATCCATTCAAAGGCATTGGCCAGGA
 GCATTTCTTCAAAAAGATTGAAGCCGCACATTGCCTAGCCTGTGACATGCTGATTCTGCGCAGCATCAG
 CTTCTCCAGCGGCATCTGCATTCCTGGACCATAACCATAATCGAAGGTTGGCTGCTGAGCAGTTCAAGA
 AAACAAGTCTCCATGTGGCTAAGAGTGTGTTGAACAACAACATATAGTGAAGATGCTGGAAAAATACCT
 CAAGGGTGAGGATCCTTTTGTCAATGAACTGCTGACCTTGAGACAGAAGGAGATGAAAATGTAGGAGAG
 GAGAAGGAGGAGACACCAGAGGAGGTAGCTGCCAAGTCTTAGCAGAGGTGATCACAGCAGCAGTGAAGG
 CTGTAGAGGGGGAAGGAGAACCTGCTGCAGCGCATAGTGACGTCCTAACTGAAGTGAAGGCCTGTGGA
 CACAGCAGAGGCCAGCAGTGACCCACACTGAAAAGCTACTAGAAGAGCAGACCTGTGAAGCAGCATCT
 GAAACCAGGAGCATCGAAGACAAGACCAGAGGTGAGGCTGCTGAGGCCAGAAATGAAGCAGCTATGCCAA
 CAGCAGACGCAGGAAGCACGTTACCTGTATAGCAATCCCGGGAATCATGGAAGATGAGCTGGAACAAAC
 TGGTGCAGAGGCCAAAGATATCCACCCGAA

ACGCGTACGCGGCCGCTCGAG – GFP Tag – GTTTAA

Protein Sequence: >MG215718 representing NM_019774
 Red=Cloning site Green=Tags(s)

```
MEQGYGGYGAWASAGPANTQGTYSGMTSWQGYENYNYNAQNTSVPAGTPYSYGPASWEATKTNDGGLAA
GSPAMHVASFPEPCTDNSDSLIAKINQRLDMLSKEGGRGGISSGGEGVQDRDSSFRFPQYESYDARPCI
PEHNYPYRPGYGYDYDFDLGTRNGSFGGTFNDCRDPAPERGLDGLRGRGQGRFQDRSNSSTFIRSDPF
MPPSASEPLSTTWNELNYMGGRLGGPSTSRPPPSLFSQSMAPDYSMGMQGVGGFGGTMPIYGCGRSQR
IRDWPRRRGFERFGPDNMGRKRKQFPLYEEDAKLARADSDGDLSENDDGAGDLRSGDEEFRGEDDLCD
RKQRGEKEDEDEDVKKRREKQRRDRMRDRAADRIQFACSVCKFRSFEDEEIQKHLQSKFHKETLRFIST
KLPDKTVEFLQEYIINRNKIKERRQELLEKESPKPKDPFKIGQEHFFKKIEAAHCLACDMLIPAQHQ
LLQRHLHSVDHNNRRLAAEQFKKTSLVAKSVLNNKHIVKMLEKYLKGEDPFVNETADLETEGDENVGE
EKEETPEEVAEVLAEVITA AVKAVEGEGEPAAHSDVLTEVEGPVDTAEASSDPHTEKLLLEEQTCEAAS
ETRSIEDKTRGEAAEARNEAAMPTADAGSTLPVIAIPGIMEDELEQTGAEAKDIPT
```

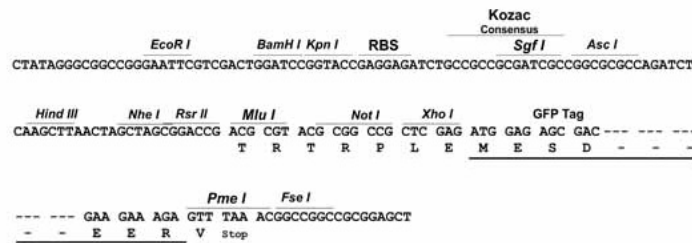
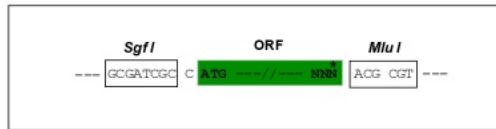
TRTRPLE - GFP Tag - V

Restriction Sites:

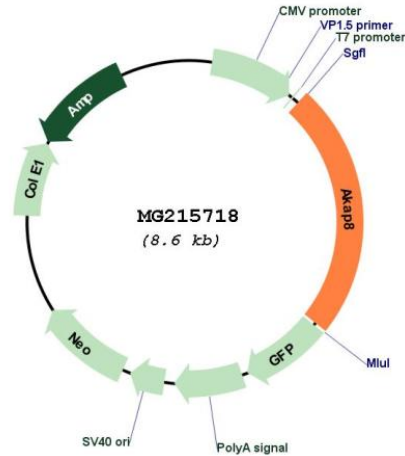
Sgfl-MluI

Cloning Scheme:

Cloning sites used for ORF Shuttling:



Plasmid Map:



ACCN: NM_019774

ORF Size: 2061 bp

OTI Disclaimer: The molecular sequence of this clone aligns with the gene accession number as a point of reference only. However, individual transcript sequences of the same gene can differ through naturally occurring variations (e.g. polymorphisms), each with its own valid existence. This clone is substantially in agreement with the reference, but a complete review of all prevailing variants is recommended prior to use. [More info](#)

OTI Annotation: This clone was engineered to express the complete ORF with an expression tag. Expression varies depending on the nature of the gene.

Components: The ORF clone is ion-exchange column purified and shipped in a 2D barcoded Matrix tube containing 10ug of transfection-ready, dried plasmid DNA (reconstitute with 100 ul of water).

Reconstitution Method:

1. Centrifuge at 5,000xg for 5min.
2. Carefully open the tube and add 100ul of sterile water to dissolve the DNA.
3. Close the tube and incubate for 10 minutes at room temperature.
4. Briefly vortex the tube and then do a quick spin (less than 5000xg) to concentrate the liquid at the bottom.
5. Store the suspended plasmid at -20°C. The DNA is stable for at least one year from date of shipping when stored at -20°C.

RefSeq: [NM_019774.4](#), [NP_062748.2](#)

RefSeq Size: 3695 bp

RefSeq ORF: 2064 bp

Locus ID: 56399

UniProt ID: [Q9DBR0](#)

Cytogenetics: 17 B1

Gene Summary: This gene encodes a member of the A-kinase anchoring protein (AKAP) family. These proteins are characterized by their ability to bind to the R subunit of protein kinase A (PKA) and anchor the protein at different subcellular locations. This protein has been shown to regulate apoptosis and to be involved in palatogenesis. Knockdown of this gene has been associated with altered histone modifications and reduced expression of developmental genes in mouse embryonic stem cells. Alternative splicing results in multiple transcript variants. [provided by RefSeq, Mar 2015]