

Product datasheet for **MG215703**

Oip5 (NM_001042653) Mouse Tagged ORF Clone

Product data:

Product Type:	Expression Plasmids
Tag:	TurboGFP
Symbol:	Oip5
Synonyms:	5730547N13Rik; Lint-25; Ms18b
Mammalian Cell Selection:	Neomycin
Vector:	pCMV6-AC-GFP (PS100010)
E. coli Selection:	Ampicillin (100 ug/mL)

ORF Nucleotide Sequence: >MG215703 representing NM_001042653
Red=Cloning site Blue=ORF Green=Tags(s)

TTTTGTAATACGACTACTATAGGGCGCCGGGAATTCGTCGACTGGATCCGGTACCGAGGAGATCTGCC
GCCGCGATCGCC

ATGGCGACTCTCTCGCGCCGAGTCTTCGCTTCTGGAGACCCAGTCACGTCGTGACTCTTGTGATACAC
CTTTTTCTCTTACCTCCTCCATGGAGTGGGACACTCAGGTGGTGAAGGGTTCTCCCCTCTCGGGTCTC
CGAGTCTAAGGTGAAGGCGTCACCTGTGACCTGCGGCTGCCTGCGTGGTTGGAGCCGGAGAGATGTGCC
GTGTTTCATTGCGCGGGTGCTACGCGGTGCTCGGCGACACCCTGCACCTCGCCTGGGACCTGTGCGGGT
CCCTCGGCGCCCTGGCCTTCTCCAAGTCACAAACAACGTCGTTTTGTTAGAGCCCTTTTGGTTGGCAT
AGAAGGTTTTCTCAAGTCCAGCACATACAACCTTTTATTCTGTAATTCCTGTGGGACTCCTGTTGTTTC
CATTTATATTCTACCCATGCTGCTATGGCTGCCTTGAGAGGCCATTTCTGCCTTCTAGTGATAAAATGC
TGTGCTATCTGTTAAAAACAAATGCCATAGTAAATACATCTGAAATGGATTTTCATAATGTACCTTTACC
AGAAAAGATTGCAGAGCTGAAAGAGAAGATAATGCTAATGCATACTCGTCTAAACTCACTGACGGGGCTT
CTGAAGGGAAAAGTCTCCTCATCAGTTTAAGCAAGAAAACCAACAAGCAAGGAAAACAACATCTTGGGGT
TAACAGCATACCAAAGATCCTG

ACGCGTACGCGGCCGCTCGAG - GFP Tag - GTTTAA



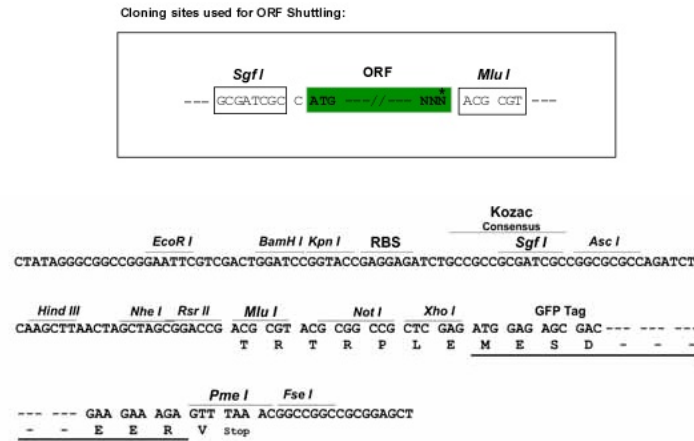
Protein Sequence: >MG215703 representing NM_001042653
 Red=Cloning site Green=Tags(s)

MATLSRRSLRFLETQSRRDSCDTPFSLTSSMEWDTQVVEGFSPLGSSSEKVKASPVDLRLPAWLEPERCA
 VFHCARCYAVLGDTLHLAWDLRSRLGALAFSKVTNNVLLPFLVGIIEGFLKSSTYNLLFCNSCGTPVGF
 HLYSTHAAMAALRGHFCLSSDKMLCYLLKTNAI VNTSEMDFHNVPLPEKIAELKEKIMLMHTRLNSLTGL
 LK GKSPHQFKQENQARKQHILGLTASPKIL

TRTRPLE - GFP Tag - V

Restriction Sites: SgfI-MluI

Cloning Scheme:



ACCN: NM_001042653

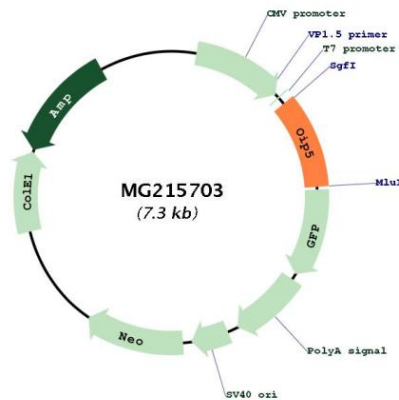
ORF Size: 723 bp

OTI Disclaimer: The molecular sequence of this clone aligns with the gene accession number as a point of reference only. However, individual transcript sequences of the same gene can differ through naturally occurring variations (e.g. polymorphisms), each with its own valid existence. This clone is substantially in agreement with the reference, but a complete review of all prevailing variants is recommended prior to use. [More info](#)

OTI Annotation: This clone was engineered to express the complete ORF with an expression tag. Expression varies depending on the nature of the gene.

Components: The ORF clone is ion-exchange column purified and shipped in a 2D barcoded Matrix tube containing 10ug of transfection-ready, dried plasmid DNA (reconstitute with 100 ul of water).

Reconstitution Method:	<ol style="list-style-type: none">1. Centrifuge at 5,000xg for 5min.2. Carefully open the tube and add 100ul of sterile water to dissolve the DNA.3. Close the tube and incubate for 10 minutes at room temperature.4. Briefly vortex the tube and then do a quick spin (less than 5000xg) to concentrate the liquid at the bottom.5. Store the suspended plasmid at -20°C. The DNA is stable for at least one year from date of shipping when stored at -20°C.
Note:	Plasmids are not sterile. For experiments where strict sterility is required, filtration with 0.22um filter is required.
RefSeq:	NM_001042653.1 , NP_001036118.1
RefSeq Size:	1557 bp
RefSeq ORF:	726 bp
Locus ID:	70645
UniProt ID:	A2AQI4
Cytogenetics:	2 E5
Gene Summary:	Required for recruitment of CENPA to centromeres and normal chromosome segregation during mitosis.[UniProtKB/Swiss-Prot Function]

Product images:

Circular map for MG215703