

Product datasheet for **MG215698**

Peli2 (NM_033602) Mouse Tagged ORF Clone

Product data:

Product Type: Expression Plasmids
Tag: TurboGFP
Symbol: Peli2
Synonyms: AW047589; BBI29927
Mammalian Cell Selection: Neomycin
Vector: pCMV6-AC-GFP (PS100010)
E. coli Selection: Ampicillin (100 ug/mL)

ORF Nucleotide Sequence: >MG215698 representing NM_033602
Red=Cloning site Blue=ORF Green=Tags(s)

TTTTGTAATACGACTCACTATAGGGCGGCCGGGAATTCGTGACTGGATCCGGTACCGAGGAGATCTGCC
GCCGCGATCGCC

ATGTTTTCCCGGGCCAGGAGGAACCCAGCGCCCAACAAGGAGCCGGTAAAATACGGGGAGCTGGTGG
TCCTGGGGTACAATGGTGTCTTACCTAATGGTGACAGGGCCAGGAGAAAAGCAGATTTGCCCTCTATAA
GCGGACCTACGCCAGTGGTGTCAAACCCAGCACAAATCCACATGGTCTCCACACCACAGGCGTCCAAGGCC
ATCAGCTCCAGAGGACATCACAGCATATCGTACACGTTGTACGGAGCCAGACGGTAGTGGTGGAGTACA
CACACGATAAAGACACAGACATGTTTCAGGTGGGCAGGTCAACAGAAAAGCCCAATTGACTTCGTGGTCAC
AGACACGGTTTCCGGCGGTGAGAACGAAGATGCCAGATCACACAGAGCACCATCTCTAGGTTCCGATGC
AGGATCGTGTGTGACAGGAACGAGCCATACACAGCACGCATATTCGCGGCAGGATTCGATTCTTCCAAAA
ATATCTTTCTGGAGAGAAAGCAGCAAAAATGAAAAACCTGATGGACACATGGATGGACTCACTACCAA
CGGTGTCTGGTGTGCACCCGCAAGGAGGCTTACCAGGAAATCCAGCCTGGAGTCTGGAGAGAGATC
TCTGTCTGTGGGATGTATACCTTTCGAGAGACCAGGTCCGCCAGCAGAGGGGAAAAGCTGGTGGAAA
GTGAGACCAACGTCCTGCAAGACGGCTCCCTCATTGACCTGTGTGGGGCCACTCTCTCTGGAGAACC
AGATGGCCTTTTTACGCTCTACTCAGAAGCACATAGAAGCCCTCCGGCAGGAGATCAATGCAGCCCGA
CCCCAGTGCCCGTGGGCTTAACACCTGGCCTTCCCAGCATCAACCGGAAGGAAGTGGTGGAAAGAGA
AGCAGCCCTGGGCATACCTGAGCTGCGGCCATGTGCAGGCTACCACAGCTGGGGCCATCGGAGCGACAC
GGAAGCCAACGAGAGGGAGTGTCCCATGTGCAGGACTGTGGGCCCTACGTCCCTCTCTGGCTGGGCTGT
GAGGCAGGATTTATGTCGATGCGGGACCCCAACTCACGCTTTCACCCCTGCGGGCAGCTGTGTCAG
AGAAAGTCTGCAAGTACTGGTGCAGATCCCACTGCCCCACGGAACGCACGCGTTTACGCCCGCTGTCC
GTTCTGCGCCACGCAGTGGTTGGTGAACAGAAGTGCATCAAATGATTTTCAAGGTCCAGTGGAC

AGCGGACCGACGCGTACGCGGCCGCTCGAG - GFP Tag - GTTTAA



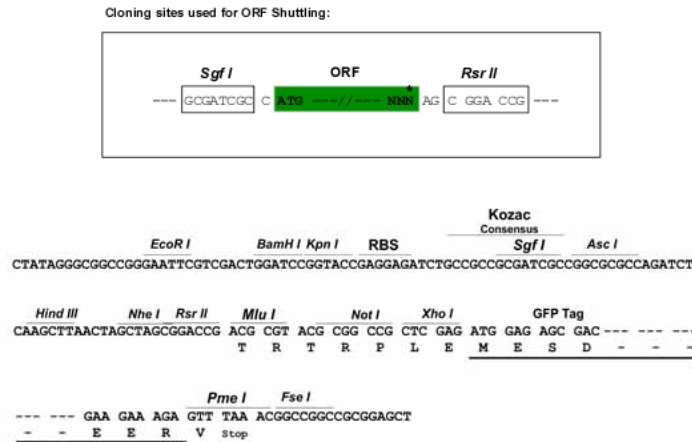
Protein Sequence: >MG215698 representing NM_033602
 Red=Cloning site Green=Tags(s)

MFSPGQEEPSAPNKEPVKYGELVVLGYNGALPNGDRGRRKSRFALYKRTYASGVKPKSTIHMVSTPQASKA
 ISSRGHHSISYTLRSRQTVVVEYTHDKDMDMFQVGRSTESPIDFVVTDTVSGGQNEDAQITQSTISRAC
 RIVCDRNEPYTARIFAAGFDSSKNIFLGEKAAKWKNPDGHMDGLTTNGVLVMHPQGGFTEESQPGVWREI
 SVCGDYVYTLRETRSAQQRQGLVESETNVLQDGLIDLGCATLLWRTADGLFHAPTQKHIEALRQEIINAAR
 PQCPVGLNLAFFPSINRKEVVEEKQPWAYLSCGHVHGYHSWGHRSDTEANERECPMCRTVGPYVPLWLG
 EAGFYVDAGPPTHAFTPCGHVCSEKSAKYWSQIPLPHGTHAFHAACPFCATQLVGEQNCIKLIFQGPVD

SGPTRRRLE - GFP Tag - V

Restriction Sites: SgfI-RsrII

Cloning Scheme:



ACCN: NM_033602

ORF Size: 1257 bp

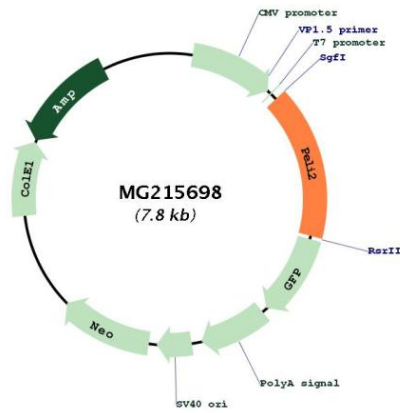
OTI Disclaimer: The molecular sequence of this clone aligns with the gene accession number as a point of reference only. However, individual transcript sequences of the same gene can differ through naturally occurring variations (e.g. polymorphisms), each with its own valid existence. This clone is substantially in agreement with the reference, but a complete review of all prevailing variants is recommended prior to use. [More info](#)

OTI Annotation: This clone was engineered to express the complete ORF with an expression tag. Expression varies depending on the nature of the gene.

Components: The ORF clone is ion-exchange column purified and shipped in a 2D barcoded Matrix tube containing 10ug of transfection-ready, dried plasmid DNA (reconstitute with 100 ul of water).

Reconstitution Method:	<ol style="list-style-type: none">1. Centrifuge at 5,000xg for 5min.2. Carefully open the tube and add 100ul of sterile water to dissolve the DNA.3. Close the tube and incubate for 10 minutes at room temperature.4. Briefly vortex the tube and then do a quick spin (less than 5000xg) to concentrate the liquid at the bottom.5. Store the suspended plasmid at -20°C. The DNA is stable for at least one year from date of shipping when stored at -20°C.
Note:	Plasmids are not sterile. For experiments where strict sterility is required, filtration with 0.22um filter is required.
RefSeq:	<u>NM_033602.2</u> , <u>NP_291080.2</u>
RefSeq Size:	5849 bp
RefSeq ORF:	1260 bp
Locus ID:	93834
UniProt ID:	<u>Q8BST6</u>
Cytogenetics:	14 24.6 cM
Gene Summary:	E3 ubiquitin ligase catalyzing the covalent attachment of ubiquitin moieties onto substrate proteins. Involved in the TLR and IL-1 signaling pathways via interaction with the complex containing IRAK kinases and TRAF6. Mediates IL1B-induced IRAK1 'Lys-63'-linked polyubiquitination and possibly 'Lys-48'-linked ubiquitination. May be important for LPS- and IL1B-induced MAP3K7-dependent, but not MAP3K3-dependent, NF-kappa-B activation. Can activate the MAP (mitogen activated protein) kinase pathway leading to activation of ELK1. [UniProtKB/Swiss-Prot Function]

Product images:



Circular map for MG215698