

Product datasheet for **MG215693**

Mtbp (NM_001168250) Mouse Tagged ORF Clone

Product data:

Product Type:	Expression Plasmids
Product Name:	Mtbp (NM_001168250) Mouse Tagged ORF Clone
Tag:	TurboGFP
Symbol:	Mtbp
Synonyms:	A1429604; MDM2BP
Mammalian Cell Selection:	Neomycin
Vector:	pCMV6-AC-GFP (PS100010)
E. coli Selection:	Ampicillin (100 ug/mL)



[View online »](#)

ORF Nucleotide Sequence:

>MG215693 representing NM_001168250
 Red=Cloning site Blue=ORF Green=Tags(s)

TTTTGTAATACGACTCACTATAGGGCGGCCGGGAATTCGTCGACTGGATCCGGTACCGAGGAGATCTGCC
 GCC**CGATCGCC**

ATGGATCGGTA**CTT**GCTGCTGGT**CACT**GGAGGGAAGGGAAGTTTCGATCCGTGGCGGGTGGGAGATCG
 AGCCTGGCACTGAGGCGACATCCCTGGAGAGCACCGACAAACAGCCCGATTTGACCGCAACCAATATTTA
 TCACCTCTTGAAGAGAAGCATCAGCGATTCAATCCATCCAGATGACAGTACATTCCTGCTTGTTCAGTG
 GGTGGCACACCTCATTCCAGGAAGTGGTCTTTGCGGTGCAAGCAATATGCGGATTTTACCAGTTTTGTA
 GTTCTGATTGGCAAGAGATACATTTTGTGCTGAAAAAGATAAAATCGAAGATGTTCTTCAAGCAAAAT
 AGAAGAATGTCAGAGTGTGTTGAGTGTGTTGAAGAAGATGACAGTAATAGCAGGGAATCCTTACCCTTG
 GCTGACCTATATGAAGAATCAGCAGAAAATTTGCATCAGTTATCAGACAAGCTTCCCGCTCTGGTAGAG
 CAATGATAGACATAATACTGTTGCCTTCTGACAAAAGCCCTCCTAAGCTAAAAGAGTGTGCCCCATTGT
 AGGGGCCCTTGAACATCTGAAGGAATGGCATT**CAGCAAAAGTT**ATCATAGCAGGAAGTTACTGTGAGATA
 AATTGTGAGAAAATTGCTGAATACCTTT**CAGCTAGT**GTTGTGCCTTTAGAGAATT**CAGAAA**TGCCATTG
 ATCCGAGGGA**ACT**GTGGCGGGGAGAGATTCAGATGCGGGAACGAAAGTTTGGATTTGAAATTAGTTTTCC
 TGAATTTTGTAAAAGGAGTTACGCCTACGAATGTTAGTGCGTATAATTTAAATACCTGCTTCTTGGC
 AAGAAGATAGCATCTTCTAAGGTTTTCCATTATTATGGTCTGCTTTGGAATTTGTGAGATGATAAAAC
 TATCAGATCTTCCCTCCTGTTACATGTCGGATATCAGATTTGAGTTAGAGGTGACTGGGCACTGCACGAG
 GCAGAATCCATGCTGCTGTTGGAACAGATCTCTCCCTGTGTGGCAAGGTTGGTCTCTTTGTGCTG
 CCGTGTACTGTTAGCAATGTACTCATCCACCTCCAGCCA**ACT**GGCCTCAAGAAAAGTGAAGGAATACA
 TGGTCAAGAAGCCCAAGACCATCAGTGTCCCGATGTTGCCGTGAAGGGAGAGTTTCTGGCTATCATCT
 CCTGCTGCAAGGTATGGGCAAGAGAAAATGCAGAGCCACCTGCTGCACTCGGCCAGCCAGATCAATGGC
 TCGTTTCACTCAGTGTATT**CAT**GGAAGATGAAAACAAGGCAGGAGAAGCCAGACCGAGTTTCCCTT
 TTGACTTCTGCTCACTCCCAAGTTTTT**CGGAGG**AGCAGGTTTTACAGAGAGAGAAA**CAAT**TAGCCAGCTT
 TCAAGTTTTGGCTTTGAAAGAATGCCTGAAAAGAAGAAAGGCTGCAAACCAGCCCGAAGCCTTTTCTGCC
 GATGAACTCAAAGTCTGTTGGCACTCACGAGGGAGCGCTTCTAGTCACTTTGATGTTCTCCCACTG
 AAGCAGCTTAGCACAAACAGACACCGTGAAGCTGCCGGCGTGGTAAATGATGACGGTACAGTTGAACC
 TTATTCTCAAGCCTAATGGAAACCAATCCTCTGGAATGGCCAGAAAGACATGTTCTT**CAGA**TTTAGAA
 ACTTCTGAAAAGCTAAACAAAAATGAGA**ACT**GGCTCATTACCGCGTTCGTCTGAACAGTTGCTGGGCC
 ATAAAGAGGGTCCCGGGACTCACTCACATTACTGGATGCTAAGGAGCTGCTGAAGTATTTACCTCGGA
 TGGGTTACCAGTCGGAGATCTT**CAGCC**TTACACATTCAACGGGGGATT**CAT**CAGTTGGTACATGTG

ACGCGTACGCGGCCGCTCGAG – GFP Tag – GTTTAA

Protein Sequence:

>MG215693 representing NM_001168250
 Red=Cloning site Green=Tags(s)

MDRYLLLVTWREGKFRSVAGGEIEPGTEATSLESTDKQPDLTATNIYHLLKRSISDSIHPDDSTFPACSV
 GGTPHSRKWFFAVQAICGFYQFCSSDWQEIHFDAEKDKIEDVLAQNIIECQSAVECFEEDDSNSRESLPL
 ADLYEESAENLHQLSDKLPAPGRAMIDIILLPSDKDPPKLECLPIVGALKHLKEWHSKAKVVIAGSYCEI
 NCQKIAEYLSASVVPLEEFRNAIDPRELWRGEIQMRERKGFGEISFPEFCLKGVTPNTVNSAYNLNTCFLA
 KKIASSKVPHYYPALFVQMIKLSLPCYMSDIEFELEVTGHCTRQNSMLLLEQISSLCGKVGALFVL
 PCTVSNVLI PPPSQLASRKWKEYMAKKPKTISVPDVAVKGEFSGYHLLQGMGRKCRATLLHSASQING
 SFALSVIHGKMKTKAGEARPSFPDFSSLPRFSEEQVLQREKQLASFQVLALKECLKRRKANQPEAFSA
 DELKSLALTRERFLGHFDVLPTEAALAQTDTVKAAGVNDGTVPEYSSLMETNPLEWPERHVLQNLN
 TSEKAKQKMRTGSLPRSEQLLGHKEGPRDSLTLDDAKELLKYFTSDGLPVGDLQPLHIQRGIHQLVHV

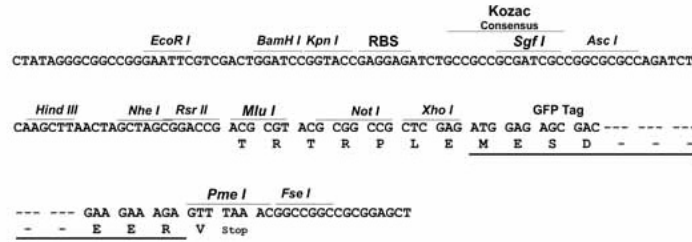
TRTRPLE – GFP Tag – V

Restriction Sites:

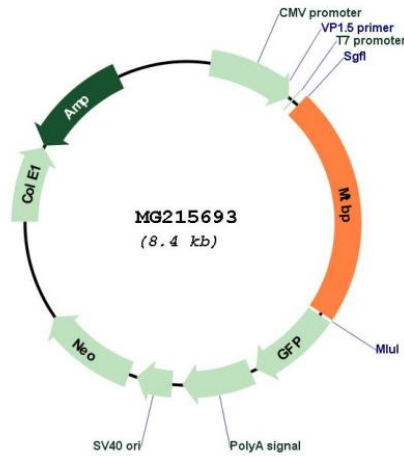
Sgfl-MluI

Cloning Scheme:

Cloning sites used for ORF Shutting:



Plasmid Map:



ACCN: NM_001168250
 ORF Size: 1887 bp

OTI Disclaimer:	The molecular sequence of this clone aligns with the gene accession number as a point of reference only. However, individual transcript sequences of the same gene can differ through naturally occurring variations (e.g. polymorphisms), each with its own valid existence. This clone is substantially in agreement with the reference, but a complete review of all prevailing variants is recommended prior to use. More info
OTI Annotation:	This clone was engineered to express the complete ORF with an expression tag. Expression varies depending on the nature of the gene.
Components:	The ORF clone is ion-exchange column purified and shipped in a 2D barcoded Matrix tube containing 10ug of transfection-ready, dried plasmid DNA (reconstitute with 100 ul of water).
Reconstitution Method:	<ol style="list-style-type: none">1. Centrifuge at 5,000xg for 5min.2. Carefully open the tube and add 100ul of sterile water to dissolve the DNA.3. Close the tube and incubate for 10 minutes at room temperature.4. Briefly vortex the tube and then do a quick spin (less than 5000xg) to concentrate the liquid at the bottom.5. Store the suspended plasmid at -20°C. The DNA is stable for at least one year from date of shipping when stored at -20°C.
RefSeq:	NM_001168250.1 , NP_001161722.1
RefSeq Size:	3384 bp
RefSeq ORF:	1890 bp
Locus ID:	105837
UniProt ID:	Q8BJS8
Cytogenetics:	15 D1
Gene Summary:	May play a role in MDM2-dependent p53/TP53 homeostasis in unstressed cells. Inhibits autoubiquitination of MDM2, thereby enhancing MDM2 stability. This promotes MDM2-mediated ubiquitination of p53/TP53 and its subsequent degradation. Inhibits cell migration in vitro and suppresses the invasive behavior of tumor cells.[UniProtKB/Swiss-Prot Function]