

Product datasheet for **MG215690**

Fzd9 (NM_010246) Mouse Tagged ORF Clone

Product data:

Product Type:	Expression Plasmids
Product Name:	Fzd9 (NM_010246) Mouse Tagged ORF Clone
Tag:	TurboGFP
Symbol:	Fzd9
Synonyms:	mfz9
Mammalian Cell Selection:	Neomycin
Vector:	pCMV6-AC-GFP (PS100010)
E. coli Selection:	Ampicillin (100 ug/mL)



[View online »](#)

ORF Nucleotide Sequence:

>MG215690 representing NM_010246
 Red=Cloning site Blue=ORF Green=Tags(s)

TTTTGTAATACGACTCACTATAGGGCGGCCGGAATTCGTCGACTGGATCCGGTACCGAGGAGATCTGCC
 GCC**GCGATCGCC**

ATGGCCGTGCCACCGCTGCTCCGCGGGGCGCTGCTGCTGTGGCAGCTGCTGGCGACGGGCGCGCGCCG
 TGGAGATCGGCCGCTTCGATCCGGAGCGTGGCCGTGGCCCGCACCGTGCCAAGCGATGGAGATCCCCAT
 GTGCCGGGGCATTGGCTACAACCTGACCCGCATGCCAACCTACTGGCCACACGTCGCGAGGGCAGGGCG
 GCGGGCAGCTGGCCGAGTTCTCGCCCCTCGTGCAGTACGGTGCACAGCCACCTGCGCTTCTTCTCT
 GCTCGCTACGCCCAATGTGCACCGACCAGGTCTCCACTCCCATCCCAGCCTGCCGGCCATGTGCGA
 GCAGGCTCGCTGCGCTGCGCCCCATCATGGAGCAATTCATTTTCGGCTGGCCGACTCACTCGACTGT
 GCCCGGCTCCCCACGCGCAACGACCCGCACGACTCTGTATGGAGGCACCCGAGAAGCTACAGCAGGCC
 CCACAGAACCCCAAGGGCCTGGGCATGCTCCCTGTGGCACCTCGGCCGCGAGGCCACCGGGAGATTC
 AGCCCCAGTCCCGGCAGCGGTGGCACCTGCGACAACCCGAGAAGTTCAGTACGTGGAGAAGAGTCGC
 TCGTGCCTCCGCGCTGCGGGCCAGGCGTCGAGGTGTTCTGGTCTCGGCCGATAAAGACTTCGCGCTGG
 TTTGGATGGCTGTGGTCCGCGTTGTGTTTCTTCCACGCGCTTACCAGTGTTCACCTTCTGCTGGA
 GCCTCACCGGTTCCAGTACCCAGAGCGCCGATTATCTTCTTTCTATGTGCTACAATGTCTACTCCTTG
 GCCTTCTGATCAGAGCGGTGGCAGGTGCACAGAGTGTGGCATGCGACCAGGAGGCGGGGCTCTGTATG
 TGATCCAGGAGGGTCTGGAAAACACAGGCTGCACCCTGGTCTTCTGTTGCTCTATTATTTCCGGATGGC
 CAGCTCACTTTGGTGGTGGTTTTGACTTAACCTGGTTCCTGGTGCAGGCAAAAAATGGGGCCACGAG
 GCCATCGAGGCTCACGGCAGCTACTTCCACATGGCAGCGTGGGGCCTGCCAGCACTCAAACTATCGTGG
 TCCTGACTCTGCGCAAGGTGGCTGGCGATGAACCTGACTGGGCTCTGCTATGTAGCCAGCATGGACCCG
 AGCCCTCACTGGCTTTGTGTTGGTACCCCTATCTTGTACTGGTACTGGGTACCAAGTTTCTCCTGACC
 GGTTTTGTGGCTCTTCCATATCCGCAAAATCATGAAGACGGGAGGCACCAATACGAGAAAGCTGGAGA
 AGCTGATGGTCAAAATCGGAGTCTTTTCCATCCTTTACACAGTGCAGGACCTGCGTCAATGTCTGCTA
 CGTTTATGAACGCTCAACATGGACTTCTGGCGGCTTCCGGCCACAGAGCAACCATGACTGCTGCCACC
 GTGCTGGAGGCCGAGAGACTGCTCGCTGCCAGGGGCTCGGTGCCACTGTGGCTGTCTTATGCTCA
 AAATCTTATGCTTGGTGGTGGGCATCACCAGTGGAGTCTGGGTATGGAGTTCCAAGACTTTTCAGAC
 TTGGCAGAGCCTGTGCTACCGAAAAATGGCAGCTGGCCGAGCCCGGGCCAAGGCTGCCGAACCCAGGG
 GGCTATGGCCGGGTACCACTGCCACTACAAAGCCCCACGGTGGTCTTGCACATGACTAAGACAGACC
 CCTCTCTGGAAACCCACACACCTC

ACGCGTACGCGGCCGCTCGAG - GFP Tag - GTTTAA

Protein Sequence:

>MG215690 representing NM_010246
 Red=Cloning site Green=Tags(s)

MAVPLLRLGALLLWQLLATGGAALIEIGRFDPERGRGPAPCQAMEIPMCRGIGYNLTRMPNLLGHTSQGEA
 AAQLAEFSPLVQYGCHSLRFFLCSLYAPMCTDQVSTPIPACRPMCEQARLRCAPIEQFNFGWPDSLDC
 ARLPTRNDPHALCMEAPENATAGPTEPHKGLGMLPVAPRPARPPGDSAPGPGSGGTCNDPEKFQYVEKSR
 SCAPRCGPGVEVFWRRDKDFALVWMAVWSALCFSTAFVTFLLLEPHRFQYPERPIIFLSMCMYVYSL
 AFLIRAVAGAQSVACDQEAGALYVIQEGLENTGCTLVLLL YYFGMASSLWVVLTLTWFLAAGKKWGHE
 AIEAHGSYFHMAAWGLPALKTIIVLTLRKVAGDELTLGCYVASMDPAALTGFVLVPLSCYLVLGTSFLLT
 GFVALFHIRKIMKTGGTNTKLEKLMVKIGVFSILYTVPATCVIVCYVYERLNMDFWRLRATEQPCTAAT
 VPGRRDCSLPGGSVPTVAVFMLKIFMSLVVVGITSGVWVWSSKTFQWTWQSLCYRMAAGRARAKACRTPG
 GYGRGTHCHYKAPTIVLHMTKTDPSLENPTL

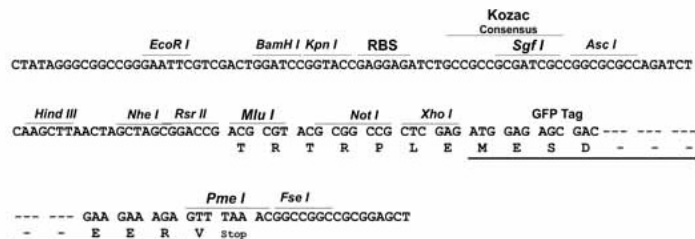
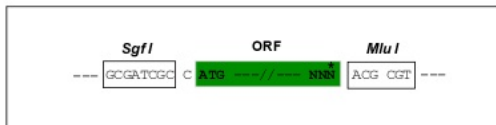
TRTRPLE - GFP Tag - V

Restriction Sites:

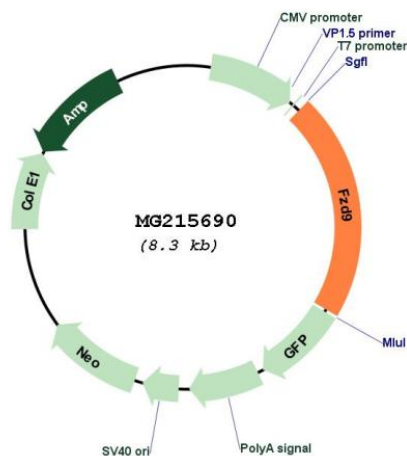
Sgfl-MluI

Cloning Scheme:

Cloning sites used for ORF Shutting:



Plasmid Map:



ACCN: NM_010246

ORF Size: 1776 bp

OTI Disclaimer:	The molecular sequence of this clone aligns with the gene accession number as a point of reference only. However, individual transcript sequences of the same gene can differ through naturally occurring variations (e.g. polymorphisms), each with its own valid existence. This clone is substantially in agreement with the reference, but a complete review of all prevailing variants is recommended prior to use. More info
OTI Annotation:	This clone was engineered to express the complete ORF with an expression tag. Expression varies depending on the nature of the gene.
Components:	The ORF clone is ion-exchange column purified and shipped in a 2D barcoded Matrix tube containing 10ug of transfection-ready, dried plasmid DNA (reconstitute with 100 ul of water).
Reconstitution Method:	<ol style="list-style-type: none">1. Centrifuge at 5,000xg for 5min.2. Carefully open the tube and add 100ul of sterile water to dissolve the DNA.3. Close the tube and incubate for 10 minutes at room temperature.4. Briefly vortex the tube and then do a quick spin (less than 5000xg) to concentrate the liquid at the bottom.5. Store the suspended plasmid at -20°C. The DNA is stable for at least one year from date of shipping when stored at -20°C.
RefSeq:	NM_010246.1 , NP_034376.1
RefSeq Size:	2110 bp
RefSeq ORF:	1779 bp
Locus ID:	14371
UniProt ID:	Q9R216
Cytogenetics:	5 75.08 cM
Gene Summary:	Receptor for WNT2 that is coupled to the beta-catenin canonical signaling pathway, which leads to the activation of disheveled proteins, inhibition of GSK-3 kinase, nuclear accumulation of beta-catenin and activation of Wnt target genes (By similarity). Plays a role in neuromuscular junction (NMJ) assembly by negatively regulating the clustering of acetylcholine receptors (AChR) through the beta-catenin canonical signaling pathway (PubMed:24860427). May play a role in neural progenitor cells (NPCs) viability through the beta-catenin canonical signaling pathway by negatively regulating cell cycle arrest leading to inhibition of neuron apoptotic process (By similarity). During hippocampal development, regulates neuroblast proliferation and apoptotic cell death (PubMed:15930120). Controls bone formation through non canonical Wnt signaling mediated via ISG15 (PubMed:21402791). Positively regulates bone regeneration through non canonical Wnt signaling (PubMed:24391920).[UniProtKB/Swiss-Prot Function]