

Product datasheet for **MG215681**

A830010M20Rik (NM_001007574) Mouse Tagged ORF Clone

Product data:

Product Type:	Expression Plasmids
Tag:	TurboGFP
Symbol:	A830010M20Rik
Synonyms:	A1849226; Kiaa1107; mKIAA1107
Mammalian Cell Selection:	Neomycin
Vector:	pCMV6-AC-GFP (PS100010)
E. coli Selection:	Ampicillin (100 ug/mL)



ORF Nucleotide Sequence: >MG215681 representing NM_001007574
Red=Cloning site Blue=ORF Green=Tags(s)

TTTTGTAATACGACTACTATAGGGCGCCGGGAATTCGTGCGACTGGATCCGGTACCGAGGAGATCTGCC
GCCGCGATCGCC

ATGCACCTAGATGATCAGCAGAAAAATCAAGTAGCTGCACTTGACAAAGGTGATGACCGCAGACTTGCCA
GGAAGCCTGTGCTCACCAGCTCTCAGCAAAGGAGACAAGGCTCTGATGTTGATGTTTTAAAAATAAAACC
TTGGACAGAAAAATAACAAAAACCGTGTCAAGACCTCTCTCTACTAATCAGAAGATGAGATCCGATGGA
TTGGGAGCATCAGGACATGCATCAAGCACTAACAGAAACAGTATAAATAAAGTGTCCAAGCATGGTGACA
GTACAAAAATGTCCAAGTTGTGAAAGAGATGAAAACGGGGGAAAAATGTCTCTGGCAAGTCTAAAAC
TATGGTAAAGCCCAACAGAAAAACAGTATCATACAAGATAGAAGTTTGTATCCACTGTTTGGGGA
AGACCATCAAGAGTGACAGCAGCTGGACGGAAGGACCCAGTACATGAAAAAGGAGTCCAGAACCAAGAAG
TGGAGACCACAGGGCAAGACCTAAGTACTACTGCAACCTGAACGTGCAAGCCAGAGCCAAGCCTTT
GCAAACTGAGAGGAAAAGATTCCACATGCCCGCCTCTGTAGGGCCCTCCAGTAGATCTACACATTCC
AGCACGGAGCTTCTGGCTTCCATGGGCTCTGTGGATGAGACAAAGGAAAACGGATCAGTAGAAGACAAGT
GTCGTGATGGGAAGCCATACGTTAGTGATTCGCCAGGACAGATGGTGAGCAATGGAGTAATGTCAACTGC
AGCAGTAAAGTCTCGAGCAGTTGCAAGAATTACCAATGGAACAGCCAGTAAACAAAAGCTTTACTCATGAA
CAAGACTCTCACGGGAATAGCAGTGTAAATAAAGAGGGGATGGCAAAAGACTTAGTGCTTCAGCACCAC
AGACAGCTCGGAAGAAAAGAGGGGAGCAATGGATGACACAGCAGCTCAGCCACGGACGAAGAGCCGCCC
TCCCACCTGGCTCAAGCTCAAGGATCCCAAGGGGAGTCAACACACTCTGTAAAATCTTCAGTCTCTTCA
AGGCAGTCTGATGAAAAATGTAACAAGTTGAGGCATGGAACAGATAAGCAATACCTAAGAGAAAAGTTG
TCAAGCAAGGACACAACTTTCAGAAAGTTAATGCAAAGCTGGTACCAATGCCTAAAATCCCAAGTCA
GCCAAGAAAAGGTGAACTGTAAACAGCAAAGATTCAAACAAAAAGTGTTCCTGGACAAATTATGCTG
CAAAGTCATGCTTCTCAGCGACCTTCAAACCTGAGGTAGCTGAGAAAAGCGTGTTCATGGTGTGAGTG
ACAGCAGGAACCATGTCTTAAACAGAGGCCTCACGAGTCCCGTGTACCTTGTGTGACACCAGTGG
TCCTGAAGTGTCCAGATACCTTGCAGACCTCAGCCAAAAGTCCATTAGGCAGTCAAGAGAAAAAGAGA
CTGGAGCTAGCATGTCAAGATAGGTCAACCTGGGCGACTCAGTGAACAGTGAAGTCCAGTCCAGAACTGG
CTGGCATAGAGCAAAGTCAACATCCGCTTACAAGACTCGAGTCAAGTGAATGGGAATCCAAACTGTGG
GAGCATTGCTGCTGAAATCTGTGATTTCAAATCCAAATGAAAACCTTGATAAACTTAACCCAGTTCAT
AATTCAGACTCAGCAAAACAGAGCAAGCCTATTTATCAGATAGAGAGAGAGAAAACAGGGAGAGAAAACA
CAGATACTGAACCAAGTATGAGTTGATAAATGGGAAAAGCTTTCCTGTGTGTTCTGAAGGGACAAGCAG
TACCCTCAACCTACTCAAAGTGACAGAAGACTCACATTTTCATGGAGCAGCTCAAAGCCAGTTACCTGAC
GACTGTGCTACAGAGGACAGTAAATGTGCTACAGTACCTCAGCTGTTTCTTCAAATGTCTTTTGGGAC
AACCATCAGAAAAAATGTAAAAATGGAATGTGAGAAAACCCAGAGGCCATGGAACCTCAGAAGC
TCCATTGCTGGGCCCTGGGATTTGAACACTGGTGCCACACATCAAAGAGAGAGTCCAGAATCCGACACT
GGTAGTGCTACCACATCTTCAAGCAGATAAAGCCCGCTCAGAAGACTATGATGCTGGGGGTCTCAGG
ATGATGAGGGCTCACACGACAGAGGCATCTCAAAGTGCAGCACAGCGCTGTGCCATGACTTCTTGGGAG
GAGCAGCAGCGACACCAGCACCCTGAAGAGTTGAAGGTGCAGAGGGTACCTCAGGACTGAAGTCAGA
GTGAGAAAAGCAGGGTGGGGGTGACCACCAGATCCACTCGGCAAGTATGACGAGATCCCTAGGAAGAAGC
CAGAACCTTGGTCTCGATCTACAATAGGCTATCCCCGGGAGAAGGGAAAGTACGCCACGGGGTAGCATCCC
ATCTGCTCAGGAAGGGGACCAGGTTTCTTCTCAGCAGATGAAACAGAAGATGAAAGATCTGAAGCAGAG
AATGTTGGGAAAAATCCTCTCCATGCAGCTCAGTACTCAGCAGTTTCAAGGAAATAATTAACCTAGCTT
TTGACGATGGAGCTGAACATGAAAGTCTGAGTTTTCTGCAACTAAGAAGTTTGAAGGTCAGTGTGCT
CTCGGTAGATGAGTGTGAAGAAGTGGGATCTGATGAAGGTGAAGGCCACACCCCTTTCAGCCTTCCCTA
GATTCTCTTACCTTCTGATGTTTTGATGGTGTCTTATGAGCATCATGGAAGGACAGGTTACTCTA
GATTTTTCAAAGAAAATGAAGTACTACTCAGAGCATAATCAACAAGGCAATGGTGGATATAAAAA
TGAAAGCTTCTCCTGAATCTAGAAGCAAAGACTTCGAAAAACAAGATAAACAATGTGTCTCAACAGAT
CAAAAGACCAGGTTAGATGTCCACCCAAAGGAAGCCAACAGCTTTTTCCGAAAACGAAGAAGTGATAA
GTAACCGGAGGGCGCTCACAGCTTTCAGCAGCACAGCACATTCATGGATGGGGACACTAAGTCTCAAGA
ACGACCGTGTCAATTTGGAGCTCCATCAGAGAGAACTCAGCTCCAATATACCAAAGATCAGCTCAGTGAA
TCTCTGGACTCCTGTCCAGCCAGGGGCTGCCTCAGGAAGGCAAGTGAAGAGAGCCGTCACCGCCTC
CCAAGGGAGCTAATAACGCTGTGTTCTCAGGTAATGTACAGAAG

ACGCGTACGCGGCCGCTCGAG - GFP Tag - GTTTAA

Protein Sequence: >MG215681 representing NM_001007574
 Red=Cloning site Green=Tags(s)

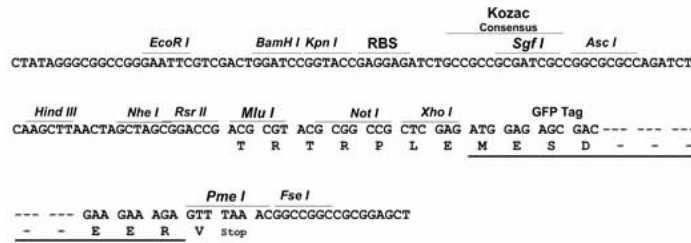
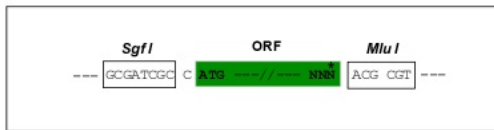
MHLDDQKIQVAALDKGDDRRLLGRKPVLTSQQRRQGSVDVLIKIPWTENKPKCQTSLSTNQKMRSDG
 LGASGHASSTNRNSINKVSKHGDSTKMSKVVKEMKTGGKYVSGKSKTMVKPQTENS DHTKIEGLSSTVVG
 RPSRVTAAGRKDPVHGKGVQNEVETTGARPKVLTANLNVQARAKPLQTLRGKDSTCPASVGPSSRSTHS
 STELLASMGVDETKENGVEDKCRDGKPYVSDSPGQMVSNVGMSTA AVKSRAVARITNGTASNKSF THE
 QDSHGNSSVIKRGDGKGLSASAPQTA AKKRGSSNGCTAAQPRTKSAPPTLAQAQGSQGESPHSVKSSVSS
 RQSDENVTRLRHGTDKQIPKRKVVKQGHTTLQKVNAKLVPMPIPSQPKKGGTVNSKDSKQKVLPGQIML
 QSHASQRPSKPEVAEKSVLHGVSDSRNHVSKQRPHESPCTLACDTS GPEVSQIPCRPQPQSP LGSQEKKR
 LELACQDRSTLGD SVKREL RSELAGIEQSHTSAYKDSQCNGNPNCGSI AALKSVISNPENLINSNPVH
 NSDSANTEQAYLSDRERETGRENTDTEPSMSCINGKAF LCVPEGTSTLNPTQSDRRLLTFHGAAQSQLPD
 DCATEDSKCATVTS AVSSKCLLGQPSEKNCKNMEMSETPESHGTP EAPFVGPWDLNTGATHQRESPESDT
 GSATTSDDIKPRSEYDAGGSQDDEGSHDRGISKSTALCHDFLGRSSDSTSTPEELKVHEGLRTEVR
 VRKQGGGDHQIHSASDDEIPRKKPEPWSRSTIGYPREKGSTPRGSI PSAEQGDQVSSSADETE DERSEAE
 NVGENSSPCSSGTQQVQGIINLAFDDGAEHESREFSATKKFRRSVLLSVDECEEVGSDEGEHTPFQPSL
 DSLSPSDVFDGVSYEHHGRTGYSRFFKENEATTA EHNHNKGNNGGYKNESFLLNSRSKDFEKQDKQC VSTD
 QKTRLDVPPKGSQQLFPENEEVISKREAAHSFQQHSTFMDGDTKSQERPCHLELHQRELSSNIPKISSVK
 SLDSCPSQGLPQEGQVKE SRTPPKANNAVFSGNVQK

TRTRPLE - GFP Tag - V

Restriction Sites: SgfI-MluI

Cloning Scheme:

Cloning sites used for ORF Shutting:

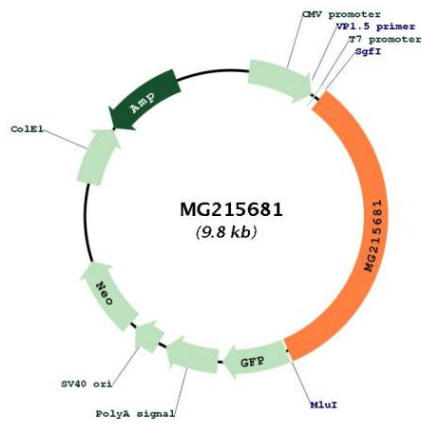


ACCN: NM_001007574

ORF Size: 3264 bp

OTI Disclaimer:	The molecular sequence of this clone aligns with the gene accession number as a point of reference only. However, individual transcript sequences of the same gene can differ through naturally occurring variations (e.g. polymorphisms), each with its own valid existence. This clone is substantially in agreement with the reference, but a complete review of all prevailing variants is recommended prior to use. More info
OTI Annotation:	This clone was engineered to express the complete ORF with an expression tag. Expression varies depending on the nature of the gene.
Components:	The ORF clone is ion-exchange column purified and shipped in a 2D barcoded Matrix tube containing 10ug of transfection-ready, dried plasmid DNA (reconstitute with 100 ul of water).
Reconstitution Method:	<ol style="list-style-type: none">1. Centrifuge at 5,000xg for 5min.2. Carefully open the tube and add 100ul of sterile water to dissolve the DNA.3. Close the tube and incubate for 10 minutes at room temperature.4. Briefly vortex the tube and then do a quick spin (less than 5000xg) to concentrate the liquid at the bottom.5. Store the suspended plasmid at -20°C. The DNA is stable for at least one year from date of shipping when stored at -20°C.
Note:	Plasmids are not sterile. For experiments where strict sterility is required, filtration with 0.22um filter is required.
RefSeq:	NM_001007574.2 , NP_001007575.2
RefSeq Size:	6756 bp
RefSeq ORF:	3267 bp
Locus ID:	231570
UniProt ID:	Q80TK0
Cytogenetics:	5 E5
Gene Summary:	Involved in clathrin-mediated endocytosis at the synapse. Plays a role in neuronal development and in synaptic vesicle recycling in mature neurons, a process required for normal synaptic transmission.[UniProtKB/Swiss-Prot Function]

Product images:



Circular map for MG215681