

## Product datasheet for **MG215679**

### **Kprp (NM\_028629) Mouse Tagged ORF Clone**

#### **Product data:**

<b>Product Type:</b>	Expression Plasmids
<b>Tag:</b>	TurboGFP
<b>Symbol:</b>	Kprp
<b>Synonyms:</b>	1110001M24Rik; AA589586
<b>Mammalian Cell Selection:</b>	Neomycin
<b>Vector:</b>	pCMV6-AC-GFP (PS100010)
<b>E. coli Selection:</b>	Ampicillin (100 ug/mL)



[View online »](#)

**ORF Nucleotide Sequence:** >MG215679 representing NM\_028629  
 Red=Cloning site Blue=ORF Green=Tags(s)

TTTTGTAATACGACTCACTATAGGGCGCCGGGAATTCGTGCGACTGGATCCGGTACCGAGGAGATCTGCC  
 GCCGGATCGCC

ATGTGTGACCAGCAACCGATTCACTGTTGTGTGCCGATACCCAGTGTGTGCAAGGGTCTCTCTTTG  
 GCCCTCACAGTTTTCTTACGCCAACCAACAGGTGCTGGTGAAGCTCCATGTGAGATGAAAGTTCTGGA  
 ATGTGCTGCACCATGCCAGTTCAAGTTTCTCAGACTGCATGCCAGTCCAGTACCAGTGAAGTGAAGGGC  
 CAGGCTCCATGTAAGACCACCAAGGCAAAATGCCAGGCCCCGTGCCAGTCAAAGACTACCAGGTGAAAT  
 ACCAGCCTAAGACCAGTGAATAAAGTCCAGGCTCCCTGCCAGACTCAGGTTTCTGTGTTCAATGCCA  
 GGCTCCATGTCAATCTCAGGTTTCTACGTGCAAAATCCACAACCTCCTCAGACCTATTATGTAGAGTGT  
 CCTCCAGTGTACTATACAGAGACTCGTTATGTGGAATATCCGGTTTCAACCTACATGCCTGCCTCAGCCC  
 TTCAGCTGGCTACACTTATGTAGAATGTCCCGCAGTGGGCCAGGGCCAGGGCCAGGGGAGGCTT  
 CTCCTACTCAGTACCAGTATCAGGGCTCCTACGGTAGCTGACTCCTCAATCACAGTACGGGCTTCTTAC  
 AGCAGCTGTGGTCCACAGAATCAATCTCAGGCTTCTACAGTTACTGTGAGCCTCAATTTACAGTCCGGGC  
 CTTCTACACCAACTGTGGCCCCAGCGCCAGTACAGGCTTCTTATGGCAACTGCACCTCCCAACTCCA  
 GTCTCGAGCATCCTACAGCAACTGCTCCTCCAGCGTCCGGTCCGGGGCTACCTTTAGCACCTGTGCACCC  
 CGATGCCAGTCCCAGGGCACCTATGGAAGTACACTTACAGCGCCGGTCTCAGAGTACCAGCCGATGCC  
 TCCCTCCTCGTCCGCTCCAGCCTTCTTATCGCAGCTGCTCTCCACCAAGACATTTGAACCTGTTATAG  
 CAGCTGCCTGCCATCCAGATGCTCTTACGGCTCCTACAACCTATTGCACTCCACCCCGCGCTCAGAGCCC  
 ATCTATGGTAGCCACTGTCACCTCGGGCCGCCCTTACGGCTGTTCTCAAAGATGTGGACCCAAATGCA  
 GGGTAGAGATTTCTCCCCTTGTGCCAAGGCAAGTCCCCCGCAGAGGTGCTCCTGTCCAGATTCCTCC  
 CTTAGAGGAAGATCCCAGAGCTGTCCCAGCAACCTCCTGGGGTGTCTCCTGCCAGACCTGAGGCCA  
 CGTGCAGACCCACACCCATTCCAAGTCTTGTAGGCCACAGCATCTTGACCGGTCTCCAGAATCATCAC  
 GGCAGAGGTGCCAGTTCCTGCACCACGTCCATATCCACGTCCACAGCCATGCCAAGCCAGAACCCCG  
 TCCGTATCCTCGTCCACAGCCTTGCCTCAAGTCCAGAACCCCGCCACGCTTGTCCACAGCCATGCCA  
 AGTCCAGAACCTCGCCCATGTCTCCATTAAGGGGATTTTCAAGAACCTGTCTGTATCCAGAACCATGCT  
 CAGCTCCTCAACAGTGCACATCCAGCACACGCCAGTGCACGTCCGCGCCAGTTCACTGTGAGAA  
 TCCAGGTCCACGTCCACAGCCTTGTCTTCTCATCCAGAGCCAATGCCACGTCCAGCGCCCTGTTCC  
 AGTCCAGAGCCTTGTGGCAACCCGTTGTTGTCCAGTCCCTGCTCAGGTCCAATCCAGTACCTTACC  
 GCCAAGAACTAGGCTGTATGAATTAACCCATGTCGCTGGATACCGAAGGCCCGCCTGTGGCTCATA  
 TAATTCACCCAAAGGCAAGAGAGTAATGGCAGCTGTGAATCTGGTGTGCTTTTCAGGATCACACGGT  
 CTAAGTGGTTGTGGAGACCAAGGAAATACCTGTGGTGGCATGAACTGTGGGGCTTATGGTGGAGCAAAGG  
 GAGCCTACTTT

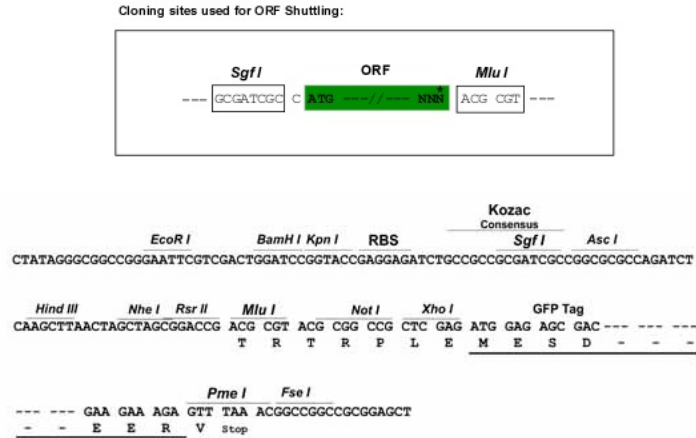
ACGCGTACGCGGCCGCTCGAG - GFP Tag - GTTTAA

**Protein Sequence:** >MG215679 representing NM\_028629  
 Red=Cloning site Green=Tags(s)

MCDQQPIQCCVPIQCCVKGSSFGPSQFSYANNQVLVEAPCEMKVLECAAPCPVQVSQTACQSSTTEVKG  
 QAPCKTTKGCQAPCQSKTTQVKYQPKTTEIKCQAPCQTQVSCVQCQAPCQSQVSYVQIPQPPQTYVVE  
 PPVYYTETRYVEYPVSTYMPAPALQPGYTYVECPAVGQGGQGGGFSTQYQYQGSYGSCTPQSQRSSY  
 SSCGPQNSQASYSYCEPQFQSGPSYTNCGPQRQSQASYGNCTSQLQSRASYSNCSQRSGATFSTCAP  
 RCQSQGTYSYTSQRSSQSTRCLPPRRLQPSYRSCSPRHSEPCYSSCLPSRCSGSSYNYCTPPRRSE  
 IYGSHCPPRGRPSGCSQRCGPKCRVEISSPCCPRQVPPQRCVQIPPFGRRSQSCPRQPSWGVSCPDLR  
 RADPHFPFRSCRPHLDSPESRQRCPVAPRPYPRPQPCPSPEPRPYPRPQPCPSPEPRPRPCPQPCP  
 SPEPRPCPLRRFSEPCLYPEPCSAQPVPHAPRPVPRPRPVHCENPGPRPQPCPLPHPEPMPRAPCS  
 SPEPCQPVRCPSPCSGPNVPYRQELGCHESNPCRLDTEGPRCGSYNFTQRQESNGSCESGDVFSGSHG  
 LSGGDQGNCTCGGMNCGAYGGAKGAYF

TRTRPLE - GFP Tag - V

**Restriction Sites:** SgfI-MluI

**Cloning Scheme:**


**ACCN:** NM\_028629

**ORF Size:** 1971 bp

**OTI Disclaimer:** The molecular sequence of this clone aligns with the gene accession number as a point of reference only. However, individual transcript sequences of the same gene can differ through naturally occurring variations (e.g. polymorphisms), each with its own valid existence. This clone is substantially in agreement with the reference, but a complete review of all prevailing variants is recommended prior to use. [More info](#)

**OTI Annotation:** This clone was engineered to express the complete ORF with an expression tag. Expression varies depending on the nature of the gene.

**Components:** The ORF clone is ion-exchange column purified and shipped in a 2D barcoded Matrix tube containing 10ug of transfection-ready, dried plasmid DNA (reconstitute with 100 ul of water).

**Reconstitution Method:**

1. Centrifuge at 5,000xg for 5min.
2. Carefully open the tube and add 100ul of sterile water to dissolve the DNA.
3. Close the tube and incubate for 10 minutes at room temperature.
4. Briefly vortex the tube and then do a quick spin (less than 5000xg) to concentrate the liquid at the bottom.
5. Store the suspended plasmid at -20°C. The DNA is stable for at least one year from date of shipping when stored at -20°C.

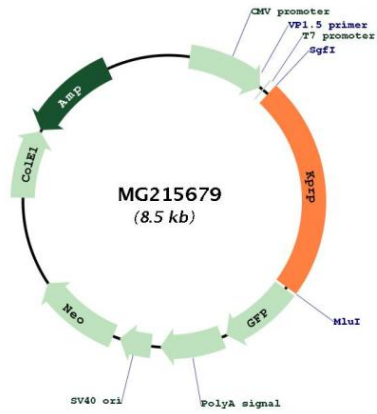
**Note:** Plasmids are not sterile. For experiments where strict sterility is required, filtration with 0.22um filter is required.

**RefSeq:** [NM\\_028629.1](#), [NP\\_082905.1](#)

**RefSeq Size:** 2738 bp

RefSeq ORF: 1974 bp  
 Locus ID: 433619  
 UniProt ID: [B2RUR4](#)  
 Cytogenetics: 3 F1

**Product images:**



Circular map for MG215679