

Product datasheet for **MG215676**

Pdha2 (NM_008811) Mouse Tagged ORF Clone

Product data:

Product Type:	Expression Plasmids
Product Name:	Pdha2 (NM_008811) Mouse Tagged ORF Clone
Tag:	TurboGFP
Symbol:	Pdha2
Synonyms:	Pdhal
Mammalian Cell Selection:	Neomycin
Vector:	pCMV6-AC-GFP (PS100010)
E. coli Selection:	Ampicillin (100 ug/mL)
ORF Nucleotide Sequence:	>MG215676 representing NM_008811 Red=Cloning site Blue=ORF Green=Tags(s)

TTTTGTAATACGACTCACTATAGGGCGCCGGGAATTCGTCGACTGGATCCGGTACCGAGGAGATCTGCC
GCC**CGATCGCC**

ATGAGGAAAATGCTGACCGCTGTGCTGTCTCACGTATTTTCGGGAATGGTCCAAAAGCCAGCTCTCAGAG
GACTGCTGTCTCTGAAGTTCTCCAACGACGCCACCTGTGACATTAAGAAATGTGACCTGTACCGGT
GGAGGAGGGCCACCGACCTCCACCGTGTCCACCGAGCCGAGGCCCTCAAGTACTACCGGACCATGCAG
GTAATTCGGCGCATGGAGTTGAAGGCCGACCAGCTGTATAAGCAGAAATTCATCCGTGGTTTCTGTCACC
TGTGTGATGGGCAGGAAGCCTGTGCGTGGGGCTGGAGGCAGGGATAAATCCCACGGATCACGTCATCAC
GTCTACCGGGCTCATGGCTTCTGTACACGCGAGGACTGTCCGTGAAGTCCATTCTCGCCGAGCTGACT
GGACGCAAAGGAGGCTGTGCTAAAGGCAAGGGAGGCTCCATGCACATGTACGGCAAGAATTCTACGGTG
GCAATGGCATTGTTGGGGCCAGGTACCCTGGGAGCTGGTGTGGCTTTTGCCTGTAATACTGAAGAA
TGGTCAGGTCTGCTTGGCTTTGTACGGCGATGGTGCAGCAACCAAGGGCAGGTATTCGAAGCATAACAAT
ATGTCAGCCTTGGAATACCTGTGTTTTCATCTGTGAGAATAACCTCTATGGAATGGGAACCTCCA
ACGAGAGATCAGCAGCCAGTACTGATTACCACAAGAAAGTGTATTATCCCCGACTGAGGGTGAATGG
GATGGATATTCTGTGTTCCGGAGGCAACCAAGTTTGCAGCTGATCACTGCAGATCTGGAAGGGGCCCC
ATTGTGATGGAGCTGCAGACCTACCGTTATCATGGACACAGTATGAGCGACCCAGGGATCAGTTATCGTT
CAGGAGAAGAAGTTCATAACGTGAGAAGTAAGAGTGATCCTATAATGCTGCTCCGAGAGAGAATTATCAG
CAACAACCTCAGCAATATTGAAGAATTGAAGAAATTGATGCAGATGTGAAGAAAGAGGTGGAGGACGCA
GCTCAGTTTGTACGACTGATCCAGAACCAGCTGTGGAAGATATAGCCAATTACCTCTACCACCAAGATC
CACTTTTGAAGTCCGTGGTGCACATAAGTGGCTCAAGTATAAGTCCCACAGT

ACCGTACGCGGCCGCTCGAG - GFP Tag - GTTTAA



[View online »](#)

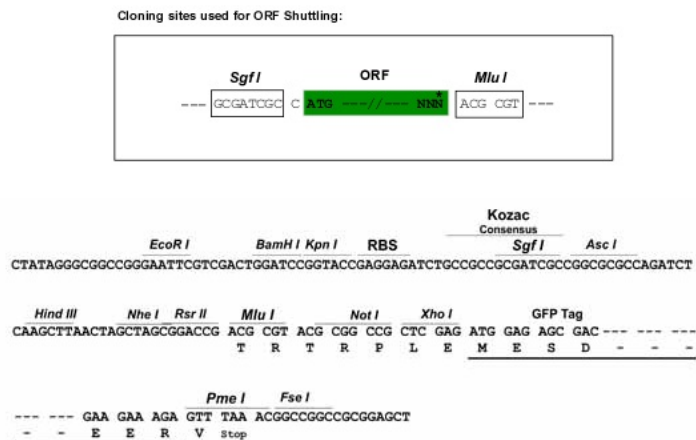
Protein Sequence: >MG215676 representing NM_008811
 Red=Cloning site Green=Tags(s)

```
MRKMLTAVLSHFVSGMVQKPALRGLLSSLKFSDATCDIKKCDLYRLEEGPPTSTVLTRAEALKYYRTMQ
VIRRMELKADQLYKQKFIGFCHLCDGQEACCVGLEAGINPTDHVITSYRAHGFCYTRGLSVKSILAELT
GRKGCCAKGKGGSMHMYGKNFYGGNGIVGAQVPLGAGVAFACKYLKNGQVCLALYDGAANQGQVFEAYN
MSALWKLPCVVICENNL YMGTSNERSAASTDYHKKGF IIPGLRVNGMDILCVREATKFAADHCRSGKGP
IVMELQTYRYHGHMSDPGISYRSREEVHNVRSKSDPIMLLRERII SNLNSNIEELKEIDADVKEVEDA
AQFATTDPEPAVEDIANLYHQDPPFEVIRGAHKWLKYSKSHS
```

TRTRPLE - GFP Tag - V

Restriction Sites: SgfI-MluI

Cloning Scheme:



ACCN: NM_008811

ORF Size: 1173 bp

OTI Disclaimer: The molecular sequence of this clone aligns with the gene accession number as a point of reference only. However, individual transcript sequences of the same gene can differ through naturally occurring variations (e.g. polymorphisms), each with its own valid existence. This clone is substantially in agreement with the reference, but a complete review of all prevailing variants is recommended prior to use. [More info](#)

OTI Annotation: This clone was engineered to express the complete ORF with an expression tag. Expression varies depending on the nature of the gene.

Components: The ORF clone is ion-exchange column purified and shipped in a 2D barcoded Matrix tube containing 10ug of transfection-ready, dried plasmid DNA (reconstitute with 100 ul of water).

Reconstitution Method:

1. Centrifuge at 5,000xg for 5min.
2. Carefully open the tube and add 100ul of sterile water to dissolve the DNA.
3. Close the tube and incubate for 10 minutes at room temperature.
4. Briefly vortex the tube and then do a quick spin (less than 5000xg) to concentrate the liquid at the bottom.
5. Store the suspended plasmid at -20°C. The DNA is stable for at least one year from date of shipping when stored at -20°C.

RefSeq: [NM_008811.2](#), [NP_032837.1](#)

RefSeq Size: 2352 bp

RefSeq ORF: 1176 bp

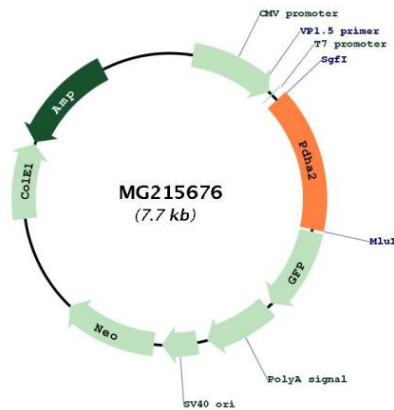
Locus ID: 18598

UniProt ID: [P35487](#)

Cytogenetics: 3 H1

Gene Summary: The pyruvate dehydrogenase complex catalyzes the overall conversion of pyruvate to acetyl-CoA and CO₂, and thereby links the glycolytic pathway to the tricarboxylic cycle. [UniProtKB/Swiss-Prot Function]

Product images:



Circular map for MG215676