

Product datasheet for **MG215673**

Itpripl1 (NM_001163527) Mouse Tagged ORF Clone

Product data:

Product Type:	Expression Plasmids
Tag:	TurboGFP
Symbol:	Itpripl1
Synonyms:	1700041B20Rik
Mammalian Cell Selection:	Neomycin
Vector:	pCMV6-AC-GFP (PS100010)
E. coli Selection:	Ampicillin (100 ug/mL)



ORF Nucleotide Sequence: >MG215673 representing NM_001163527
 Red=Cloning site Blue=ORF Green=Tags(s)

TTTTGTAATACGACTCACTATAGGGCGCCGGGAATTCGTGACTGGATCCGGTACCGAGGAGATCTGCC
 GCCCGGATCGCC

ATGGCTGTGATAAGCCTCATGTTCTTGGCAGTGATGTATGTTGTTACCACCCCTGATGGTCAGTGACC
 GTATGGACCTGGACACGCTAGCTAGGAGTCGGCAGCTGGAGAAGCGAATGAGCGAGGAGATCGCGCAGTT
 AGAGATGGAGTTTGAAGAGAGGAGCCGAGCCGCTGAGCAGAAGCAGAAAGTGGAGAAGTTCTGGAGAGGG
 GATACATCCAGTGACCAGTTAGTGCTGGGAAGAAGGACATGGGATGGCCCTTCCAGGCCGTTGGCAAG
 ATGGGGGGCCTCTGGCTGGATACTGGAAACCTGTGGAATGCAGGCCTTTTTGCCTTTTTCTCATCTT
 TGAGCTCCTACGACAGAGCATGCAGCACGAGCCAGCCTTTGAGTCCAGCAGCAGGAGGAAGGAAGAG
 ATCCGTGTCGTGCCGCTCCTCTTACACCCGGCTCTCTGATTTTCCCTCCAGGAAGCCCTGGAAGCCT
 TTTACAAACATTATATCCAAAATGCCATCCGTGACCTGCCCTGCACCTGTGAGTTTGTGGAGAGCTTTGT
 GGATGATCTCATAGAGGCTGCCGGTGTCTAGCCGCCGGGAGGCTCACCCACAGTTGGAGGACTGCCTG
 GGCTTTGGGGCTGCCTTTGAGAAGTGGGGACCTCCACGAGACCCAGAATTTGATGTCCTGGTGCCCA
 TTGTCCCTCCCCAGGGCACTATGTTTATCTTGGAGATGAGAGATCCGGCTCTGGGCCGTCGTTGTGGCTG
 TGTGAAGTGGACTCTGAGTGCATGTGCAAGCATGAGAAGCTCTTGGGGATGTGTTGTGCTGTTGCAC
 CACAGGGACCACTCAGCCATGTTGAGCAAGTGTACTAGCTCCATCAAGGCAGCTCTCTGCACCAGCTCGC
 ACCTGGACGTGTGTAAGACCGTGCAGTGGTTCGAAACATGGTGAGCAATGCCTGGGGCTAGTGGCCCA
 CAAATACGACTTTAAGCTCACTTTCCACCGTCCACCACCTCTGCAAGCTCAGGTTGGGTTACCCTCA
 GGCCGCTCTCTGTCCATCAGTTTGGTTCTAGGGGTGCAACGGGAAGATACCTTGGTCTACCTGGTGAGTC
 AGGCCCCGAGCAAGAACAGCTCACCAGTGTGGATTGGCTGAGTCTTTGACGCTTGTGAACACTTGT
 TCTGAAGCTGGTGGGGCCTTTGCCCTGAGAACACCTGCCACCTCAAGTGCCTGCAGATCGTTTTGAGT
 CTTCAGGACCATCAGATCTTACCCCGGGAGCATCTCGCCCACTTCTCACCTCTACCACTCAAGACAG
 CCCTCATGCACTTGTGCTACGACTGCCTCTGACAGACTGGCAGCACAGATGCTCTCTCTGCGCTCCA
 GGACCTCCTCTGGTCTTAGGCCGAGGCCCTCCAGCAAAGTCTCTCCATCATTTCTCATTGGTAACACC
 TACCTGCCCTGACCATACCCATTCTAAGGCATTTGGAATGCTGAGCCTGTCAATCTTTTCCAGCACC
 TGGTACTAAACCCAGTGGCACACTCGCAGGCACTGGAGGAATTCACAACCTTTTGGCCAGGTGAAAC
 TCTACCTGCTCCCACTGGCTGGAGGACTT

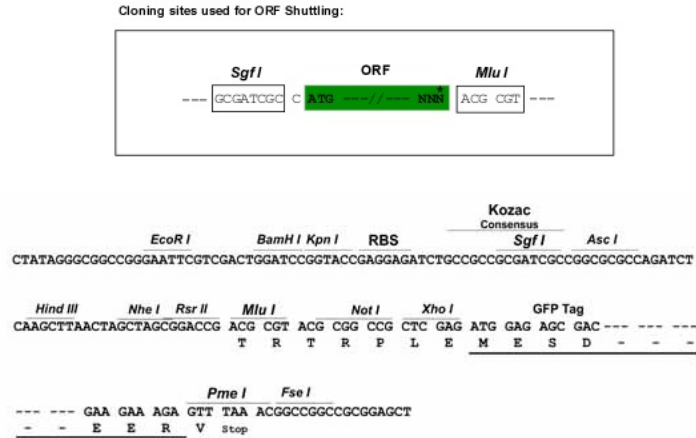
ACGCGTACGCGGCCGCTCGAG - GFP Tag - GTTTAA

Protein Sequence: >MG215673 representing NM_001163527
 Red=Cloning site Green=Tags(s)

MAVISLMFLAVMYVHHPLMVSMDRMDLTLARSRQLEKRMSEEMRQLEMEFEERSRAAEQKQKVENFWRG
 DTSSDQLVLGKDMGWPFQAGGQDGGPLGWILGNLWNAFLFCLFLIFELLRQSMQHEPAFESSSEEEEE
 IRVVPVSSYTRLSDFPSQEALEAFYKHIIQNAIRDLPCTCEVSEFVDDLIEACRVLSRREAHPLQEDCL
 FGGAFAFEKWGTLHETQNFVLPVIPPQGTMTILEMRDPALGRRCCGVKVDSECMCKHEKLLGDVLCVH
 HRDHSAMLKCTSSIKAALCTSSHLDVCKTVQWFRNMVSNAWALVAHKYDFKLTFFPSTTSCKLRLLGYRS
 GRSLISLSLVGVQREDTLVYLVSPAPEQEQLTSVDWPESFAACEHLFLKLVGRFAPENTCHLKCLQIVLS
 LQDHQILPPGASRPILTSYHFKTALMHLRLPLTDWQHSMLSLRLQDLLWFLGRGLQQRSLHHFLIGNT
 YLPLTIPIKAFRNAEPVNLFQHLVLPVAHSQAVEEFHNLQAQVKTLPCSPVAGGL

TRTRPLE - GFP Tag - V

Restriction Sites: SgfI-MluI

Cloning Scheme:


ACCN: NM_001163527

ORF Size: 1641 bp

OTI Disclaimer: The molecular sequence of this clone aligns with the gene accession number as a point of reference only. However, individual transcript sequences of the same gene can differ through naturally occurring variations (e.g. polymorphisms), each with its own valid existence. This clone is substantially in agreement with the reference, but a complete review of all prevailing variants is recommended prior to use. [More info](#)

OTI Annotation: This clone was engineered to express the complete ORF with an expression tag. Expression varies depending on the nature of the gene.

Components: The ORF clone is ion-exchange column purified and shipped in a 2D barcoded Matrix tube containing 10ug of transfection-ready, dried plasmid DNA (reconstitute with 100 ul of water).

- Reconstitution Method:**
1. Centrifuge at 5,000xg for 5min.
 2. Carefully open the tube and add 100ul of sterile water to dissolve the DNA.
 3. Close the tube and incubate for 10 minutes at room temperature.
 4. Briefly vortex the tube and then do a quick spin (less than 5000xg) to concentrate the liquid at the bottom.
 5. Store the suspended plasmid at -20°C. The DNA is stable for at least one year from date of shipping when stored at -20°C.

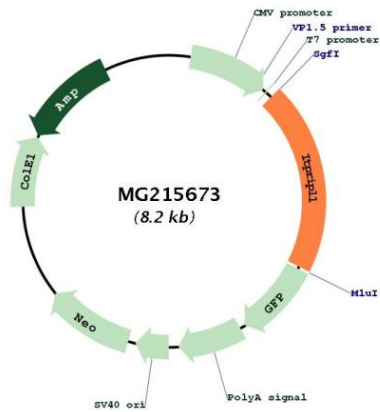
Note: Plasmids are not sterile. For experiments where strict sterility is required, filtration with 0.22um filter is required.

RefSeq: [NM_001163527.1](#), [NP_001156999.1](#)

RefSeq Size: 3689 bp

RefSeq ORF: 1644 bp
 Locus ID: 73338
 UniProt ID: [A2ASA8](#)
 Cytogenetics: 2 61.79 cM

Product images:



Circular map for MG215673