

## Product datasheet for **MG215672**

### Dusp27 (NM\_001160049) Mouse Tagged ORF Clone

#### Product data:

Product Type:	Expression Plasmids
Product Name:	Dusp27 (NM_001160049) Mouse Tagged ORF Clone
Tag:	TurboGFP
Symbol:	Dusp27
Synonyms:	C130085G02Rik; Gm209
Mammalian Cell Selection:	Neomycin
Vector:	pCMV6-AC-GFP (PS100010)
E. coli Selection:	Ampicillin (100 ug/mL)
ORF Nucleotide Sequence:	>MG215672 representing NM_001160049 Red=Cloning site Blue=ORF Green=Tags(s)

TTTTGTAATACGACTCACTATAGGGCGGCCGGAATTCGTCGACTGGATCCGGTACCGAGGAGATCTGCC  
GCC**CGATCGCC**

ATGGCTACCGGTGGAGACGCAGAGGAGGAGCAGGTAGTTCCAAACGAGGAGGATGAAGCAGATGTGAGAG  
CTGTACAGGCCCGCTATCTCCGGAGTCCCTCCCAAGCCAGTACTCGGTGGTCTCAGAGGCAGAAACCGA  
AAGCATCTTCATGGAGCCATCCACCTCTCCTCGGCTGTAGCTGCCAAACAGATCATCAACGAAGAACTC  
AAGCCTCGGGGGCTCAGAACAGACACTGAGTGTCCAGGCATGCTGGAGTCTGCTGAACAACCTGCTGGTGG  
AAGACCTGTACAACCGTGTCCGTGAGAAGATGGATGACAGGAGCCTGTTCAACACCCCTGTGTGTGGA  
CCTGCAGCGGGCGCTGACCCAGGACCGCAAGAGGCCCTCGGAATGAGGTGGATGAGGTGTGGCCCAAC  
GTCTTCATAGCTGAGAAAAGCGTGGCTGTGAACAAGGGGCGGCTCAAGAGGCTGGGCATACCCACATTC  
TGAATGCCGCACATGGCACAGGAGTTTACACTGGTTCTGAATTCTACACTGGCCTGGAGATCCAGTACCT  
GGGGGTGGAAGTGGATGACTTCCCAGAGGTGGACATCTCCCAACATTTCCGGAAGCAGCTGAGTTCCCT  
GACGAAGCTCTGCTGACCTACAGAGGAAAAGTCCGGTCAAGCAGTGAATGGGTATCAGCAGGTCAGCAG  
TGCTGGTGGTGCCTACCTGATGATCTCCACAGCATGGCCATCCTGGAGGCCTGATGACTGTGCCGAG  
AAAGCGAGCTATCTACCCAATGACGGCTTCTAAAACAACCTGCGGGAGCTCAATGAGAAATTGATGGAG  
GAGAGGGAAGAGGAGGATGGTGAAGAGGAGTCTGAGGAAGATGCCGAGCATGCTGGGCTAGAGTCA  
ATTCAGTATGGTGAAGAAGAAGATGATGCCACTAGCCACTGAGTGGCTCCTCCTGGGGAAGGCCAG  
CCAGGTCTCCAAACAGTCACTCTTATTGATGACGAGGAGGAGGAGAAGAAGCTGTATGAAGAGTGGAGG  
AAGGGGACAGGCTTCCCAAGGGGAGGCTGCTCAGGGTAGAAAGGGACGTAGCTGTTCTATGTCCTCAG  
CACAGGATGGAGACGACTGTGAGGATGAGGATGTAGAAAGGATAATCCAGGAGTGGCAGAGCCGAAATGA  
GAGGTACCAAGCCAAAGGGCGCAGCAGTGAACCGGGAGGAAGAAGAGGAGGAAGAGAACCTCTACTCC  
AGCAGAAGGCGCAGACACACCCTAAGCGAGAGCAGTGTCTGAGAGTGTGAGCAGCATGACATCCGGA  
TCCTGAAGCAGCAACTGGAGAGGAGCACCCAAAGCCGCCGGAAGATACCGCTCTGACTCGGAGTCCCT  
GGAGAGCACCTGGGACATGTGGAACGAGAGGCTGGTGGAGATCGAGAAGGAGGCTGCCCGGAAGTACCGC



[View online >](#)

TCCAAGAGCAAGAGGGAGGAGCTGGATGGCGATTGTTTCAGAGGCAGGGGGCAGGGTCCGAGAGGACGATG  
 AGGAGAGCGTGTGTCTGAGGCCAGCTCCTTCTACAACCTCTGCAGTAGGAAACAAGGACAAGCTCACTCC  
 CCTGGAAGGTGGAAGATTAAGAGAATCCAATTTGGGTTTACAAGAAAGACTCGGAGGCCGGAGACGGG  
 GGCAGTGAGCATGGTACAGAAGAGGCAGCAGCAGGAGAGAAGAACCTCTCTGATGTCAACCTGACAGCCT  
 ACCAGGCCCTGGAAGCTGAAGCACCAGAAAAAGTTGGGGAGTGAGAACAAGGAGGAAGTGGTTGAGATGAG  
 CAAAGGAGAAGACACGGTCTTGGCTAAGAAGAGACAGCGGAGACTAGAGTTACTGGAGAGGAGCAGGCAG  
 ACACCTGGAGGAGAGTCAGTCCATGGGAAGCTGGGAGGCAGACAGCTCAACAGCCAGCAGGAGACTCCCCC  
 TGCTGCACTTCTCGTCCGCGCCCTTCTGTGAGTGCAGTGGGACACTGCGTCACTCAGCAGCCCA  
 GAGCCACCGTTTCTCATGCAAGTAAACATGCCCGCCACCCCTGCCTAACCTGCCGGTGGGGCCTGGAGAC  
 ACCATTTCCATTGCCAGTATCCAGAACTGGATTGCCAATGTCGTCAATGAAACCTCGCCAGAAGCAAA  
 ACGAAATGCTCTTGTGTCGCGCCACCCTCTGTTGCAAGCATGAAGGCAGCTCCAGCAGCCTGCGGCCCT  
 TGGGGGGGATGACCAGCTCTCCGTGCTCAGCACCTCCCTGAGTGGCTGCTTACCACCTCCAAGCCAAGG  
 AGACCCAGCTCCGACGTGCAGTCTGTGCTCCTCCACCAGCTCGCTGACCTCCAGGGCTGAAGGCAGTG  
 GGAACAAAGTGAAGGGGACCAGCAAGCCATCTACAGCCTCTTTGCTGACAACGTGGACCTGAAGGAGCT  
 TGGCCGGAAGGAGAAGAGATGCAAATGGAGCTGCAGGAGAAGATGTCGAGTATAAAATGGAGAAGCTG  
 GCCTCTGATAACAAGCGTAGCTCTCTTCAAGAAGAAGAAGGCCAAGGATGACGAGGACATGAGCGTGG  
 GTGACAGAGACGAGGACACAGACAGTGCATCGGAAGCTTCCGGTACTCCTCTCGCAGTAATTTCCAGAA  
 GCCGGAGACAGATGCCTCCTTCTCTGGCCATCTCTGATCACTATAGAAATGGCCGACAGATGGGTAAAC  
 GAGATGGATAGCAATATTAATACGTGGCTCAGTGGCCTCAGGATGGAAGAAAAATCTCCTCCTCAAAGTG  
 ATTTGGTCCGGAAGTTCCAGGGGGAGGTATACCAGGTCTTCTCTGCTCCGGGAAACAGAGTCTAAATCCTG  
 CAGTTACAAGTTCTCAAATCTAGTTCACAGGAGCAGGACACCTCCTCCACGAAGCCAATGGTGACACT  
 GTGGCAAACACCTCACGGTCTCATCTTCCACCACCAAGGAGGCCAGAGAGATGCACAAGTTCTCTCGGT  
 CCACATTCAGCGAGACCTCGAGCTCCCGAGAGGAGGCCAGAACCTATTTCTCCGCGGACCCCTGA  
 ACCCTCTGATGGGGAGGAGTCCCGAGAGCCAAGGCGTCCAAACTGGACCAGGCCAGGACTGGGAAGAT  
 GTAGAAGAGTCATCTAAATCAGACTTCCGTGAGTTGGGGCCAAGAGGAAATTCACCCAGAGCTTATGA  
 GGTCTGAAGAGGAGGAGAGAAGGAGAGGACAGAAAACCGAGAGGAAGGGAGTTTGCATCTGGCGCTCA  
 GTCCAGTATCGGAGAAGCACAACCAGCAAGAGGAAGAAGAAATGGATGATGAAGCCATCATTGCCGCC  
 TGGAGAAAGCGGCAAGAGGAAACCAGAACCAACTGCAAAGGAGGAGGGAGGAC

ACGCGTACGCGGCCGCTCGAG – GFP Tag – GTTTAA

**Protein Sequence:**

>MG215672 representing NM\_001160049  
 Red=Cloning site Green=Tags(s)

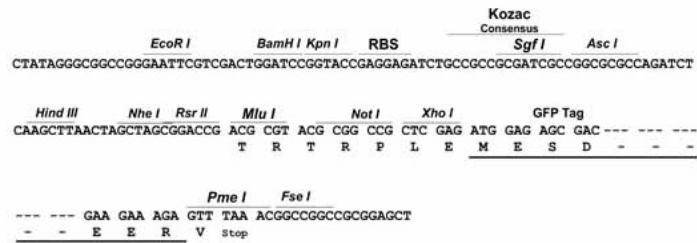
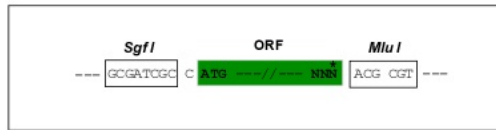
MATGGDAEEEEQVVPNEEDEADVRAVQARYLRSPSPSQYSVVSEAEETESIFMEPIHLSAVAQKIINEEL  
 KPRGLRDTCEPGLAESAEQLLVEDLYNRVREKMDRSLFNTPCVLDLQRALTQDRQEARNEVDEWPN  
 VFIAEKSVAVNKGRLKRLGITHILNAAHGTGVYTGSEFYTGLEIQYLGVEVDDFPEVDISQHFRAAEFL  
 DEALLTYRQKVLVSSEMGISRSVAVLVAYLMIHFHSMALILEALMTVRRKRAIYPNDGFLKQLRELNEKLME  
 EREEEDGESEEDAGSMLGARVNSLMVEEEDDATSHLSGSSLGKASQVSKPVTLIDDEEEKLYEEWR  
 KGQGFPGKEAAQGRKGRSCSMSSAQDGDCEDEDVERIIQEWQSRNERYQAKGREQWNEEEEEENSYS  
 SRRRRHTLSESSASESVSSHDIRILKQQLERSTQSRGRYRSDSESESTWDMWNERLVEIEKAARKYR  
 SKSKREELDGDCEAGGRVREDDEESVLSEASSFYNFCSRNDKLTPLERWKIKRIQFGFHKKDSEAGDG  
 GSEHGTEEAAGEKNLSDVNLTAQAWLKHQKVGSENKEEVVEMSKGEDTVLAKKRQRRELLERSRQ  
 TLEESQSMGSWEADSSTASRSIPLSAFSSAAPSVSADGDTASVLTQSHRSHASNPATPLPNLPVPGD  
 TISIASIQNWIANVVNETLAQKQNEMLLSRPPSVASMKAAPAACGLGGDDQLSVLSTSLSGCLPPPSQG  
 RPSSDVQSVLSSSTLTSRAEGSGNKVRGTSKPIYSLFADNVDLKELGRKEKEMQMLQEKMSEYKMEKL  
 ASDNKRSSLFKKKKAKDDEDMSVGDREDDTSDAIGSFYSSRSNSQKPETDASSSLAISDHYRNGRSMGN  
 EMDSNINTWLSGLRMEEKSPQSDWSGSSRGRYTRSSLLRETESKSCSYKFSKRSQEQDTSFHEANGDT  
 VRNTRFSSTTKEAREMHKFSRSTFSETSSREESPEPYFFRRTPEPSDGEESPEPRRNWTRPRDWD  
 VEESKSDFAEFGAKRKFQSFMRSEEEGKERTENREEGRFASGRQSQYRRSTNQEEEEEMDEAIIAA  
 WRKRQEE TRTKLQRRRED

TRTRPLE – GFP Tag – V

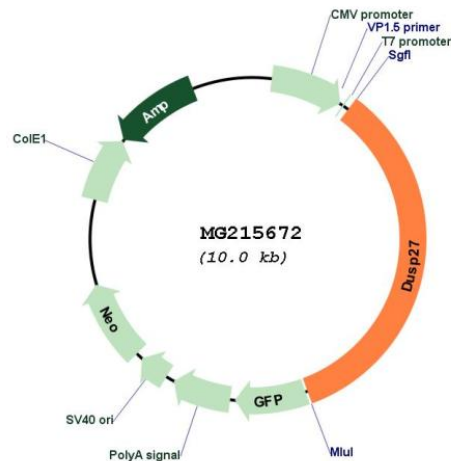
Restriction Sites: SgfI-MluI

Cloning Scheme:

Cloning sites used for ORF Shuttling:



## Plasmid Map:



ACCN: NM\_001160049

ORF Size: 3414 bp

OTI Disclaimer: The molecular sequence of this clone aligns with the gene accession number as a point of reference only. However, individual transcript sequences of the same gene can differ through naturally occurring variations (e.g. polymorphisms), each with its own valid existence. This clone is substantially in agreement with the reference, but a complete review of all prevailing variants is recommended prior to use. [More info](#)

OTI Annotation: This clone was engineered to express the complete ORF with an expression tag. Expression varies depending on the nature of the gene.

Components: The ORF clone is ion-exchange column purified and shipped in a 2D barcoded Matrix tube containing 10ug of transfection-ready, dried plasmid DNA (reconstitute with 100 ul of water).

Reconstitution Method:

1. Centrifuge at 5,000xg for 5min.
2. Carefully open the tube and add 100ul of sterile water to dissolve the DNA.
3. Close the tube and incubate for 10 minutes at room temperature.
4. Briefly vortex the tube and then do a quick spin (less than 5000xg) to concentrate the liquid at the bottom.
5. Store the suspended plasmid at -20°C. The DNA is stable for at least one year from date of shipping when stored at -20°C.

RefSeq: [NM\\_001160049.1](#), [NP\\_001153521.1](#)

RefSeq Size: 4038 bp

RefSeq ORF: 3417 bp

Locus ID: 240892

UniProt ID: [Q148W8](#)

Cytogenetics: 1 H2.3

**Gene Summary:** May be required for myofiber maturation.[UniProtKB/Swiss-Prot Function]