

## Product datasheet for **MG215660**

### Ccpgl (NM\_028181) Mouse Tagged ORF Clone

#### Product data:

<b>Product Type:</b>	Expression Plasmids
<b>Tag:</b>	TurboGFP
<b>Symbol:</b>	Ccpgl
<b>Synonyms:</b>	1700030B06Rik; 1810073J13Rik; 9430028F23Rik; AI426686; AI875170; CPR8; D9Ert392e
<b>Mammalian Cell Selection:</b>	Neomycin
<b>Vector:</b>	pCMV6-AC-GFP (PS100010)
<b>E. coli Selection:</b>	Ampicillin (100 ug/mL)



**ORF Nucleotide Sequence:** >MG215660 representing NM\_028181  
 Red=Cloning site Blue=ORF Green=Tags(s)

TTTTGTAATACGACTCACTATAGGGCGCCGGGAATTCGTGCGACTGGATCCGGTACCGAGGAGATCTGCC  
 GCCGCGATCGCC

ATGCTGAAAGTCCAGCGACAGCGACTCATCTTGTGGCTGGACTGTCATCAATCATGAGGGTTCTGATA  
 TAGAGATCGTGAATTCGCCACAGCCAGTGACAACCTGTGGACTGACTCTAGAATGTTCTTAGTAGAACA  
 AGAGGAGCTGCCCGTTCTTTATGTAGGGCATGGAGGTGAAGAAAGCAGCGCAAACAACATCGTCAGTG  
 GGAGAAACCATGTTGTCATCAATGAGAGAAACCAAGTCAGCAGCTGAGGTGGAGGAAGCACCTTCCCCTG  
 AAGACAATGTCTATTTCCGAACTACTAGTGACGATTCGGATATTGTTACACTTGAACCACTTAAGCTGGA  
 AGAAATGGGGAAACCAGGAAGTTACAATTCAGAAGCGCCAGCTCAGATGACCTTAACATGGGCTCTTCC  
 TCCAGCAGCCAGTACGCTTCTGCCAGCCAGAACCCTCTTTTCATCTCAGCCTAGTGATGAGGAATCCA  
 GTAGCGATGACACCAGCCAGGACCCAGCCCTGCTCCTAGACGGCGCCGAACAGGAAGAAGACCGTTTC  
 TATCTCAGAGTCTGAGGAGCTCCACTCGCTGAGCCGGAAGATGAGCCCTCAAGGAGCCAAGTAAACGC  
 CACTTTAGTCGTGGTCTCAACAAGTGTATTATCCTGGCCTTGGTATTGCTGTGAGCATGGGATTTGGAC  
 ATTTCTATGGCACAATCCAGATTCAGAAGCAGTTAGTCAGAAGACCCAGCAAGATGAGCTGGATGGTGT  
 GAAGGGTTATCTCTCACAGCGCAAGCAGGAACAAGAGTCTTTTCTAGATTTCAAGTCGCTGAAAGAAAAC  
 CTTGAGAGGTGTTGGACCGTTACTGAATCAGAGAAGATTACCTTTGAAACTCAGAAGAAGAACCTTGCTG  
 CAGAAAACCAAGTATTTACGAATATCTCGGAGAAGGAAGAACAAGCCCTGTCTTATTACAGGAAGAGCT  
 ACGGCAACTAAGGGAGCAGATTAGATTGTTGGAGGATAAAGGCACAAGCACGCAGTTAGTTAGGGAGAAC  
 CAGGTCCTTAAGCAGTACTTAGAAGTGAAAGCAGAAAACAGATAGCTTCTTAGGGAAAGGGAGATGC  
 TCTTGGAGGAGCAAGGATGCTGAAAAGGGACCTGGAGAGGGAACAGCTCACAGCCATGGCTCTGCGGGC  
 AGAACTTGAGCAGTTTATCCCTGGCCAGGCACAGAGCCGTGCGGAGTCTCCTAGTGTGAGACTGAAGAG  
 AAGGAAGTGGGGCTGTTACAGCAGAGGCTGGCTGAGCTGGAGCAGAAGCTCATCTTTGAGCAGCAGCGCT  
 CGGATTTGTGGGAGAGACTGTACGTTGAGGCAAGGATCAACATGGAAAGCAGGAGACAGACGGGAGGAA  
 GAGAGGAAGCAGAGGAAGCCACAGGGCAAGAGCAAGTCAAGGAGACATTTCTGGGACAGTTAAGGAA  
 ACATTTGATGCTATGAAGAATTCTACCAAGGAGTTTGTGAGACATCATAAAGAAAAAATCAAGCAGGCGA  
 AAGAAGCTGTGAAGGAGAATCTGAAAAAATCTCAGATTAGTCAAAATCCACTTTTCGCCATTTCAAAGA  
 TACTACCAAGAATATCTTTGATGAAAAGGGCAGCAAGAGATTCAGGGCTCCAAAAGAAGCGGCAACTGAA  
 AAGACAAGAACAGCTTATAGTTATTCCTCATACTCACAGCAGGAGGCACCAAAACCAAAACCAAGATTGCA  
 GGCGCCCTTCTGCACAGAGGATGGAGGGAGAGAAAAGCCCACTACTCTGAAGAAATTAGAAAAGATGC  
 AAATTCATATACATAACAAGCCAAGTCTGACTGACAGAGGCCACCCATTCCACCAGAAGGGTTTGTTCAGTC  
 GACCTGATAAAAAGCAACGTATGG

ACGCGTACGCGGCCGCTCGAG - GFP Tag - GTTTAA

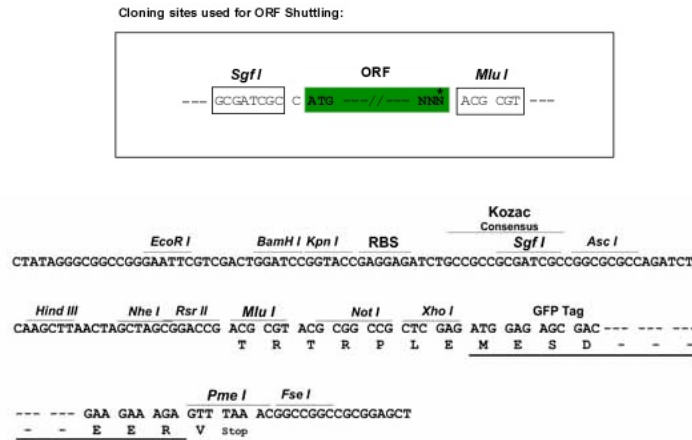
**Protein Sequence:** >MG215660 representing NM\_028181  
 Red=Cloning site Green=Tags(s)

MSESSSDSDSSCGWTVINHEGSDIEIVNSATASDNCGLTLECSLVEQEELPVLVYVGHGGEESANNTSSV  
 GETMLSSMRETKSAAEVEEAPSPEDNVYFGTSDSDIVTLEPPKLEEMGNQEVTIQEAPSSDDLNMGSS  
 SSSQYAFQCQPEPVFSSQPSDESSDDTSHEPSPAPRRRRNRKKTVSISESEEPPLAEPEDPSKEPSKR  
 HFSRGLNKCIVILALVIAVSMGFHFYGTIQIQKQLVRKTHEDELGVKGYLSQRKQEQESFLDFKSLKEN  
 LERCWVTVESEKITFETQKKNLAAENQYLRI SLEKEEQALSSLQEELRQLREQIRLLEDKGTSTQLVREN  
 QVLKQYLEVEKQKTDLSFLREREMLEEARMLKRDLEREQLTAMALRAELEQFIPGQAQSRAESPSVQTEE  
 KEVGLLQQLAELEQKLIFEQQRSDLWERLYVEAKDQHGKQETDGRKRGSRGSHRAKSKSKETFLGTVKE  
 TFDAMKNSTKEFVRHHKEKIKQAKEAVKENLKKFSDSVKSTFRHFKDTTKNIFDEKGSKRFRAPKEAATE  
 KTRTAYSYSYSQEQEAPNQNCRRPQAQRDGGREKPSHSEEIRKNANSYTYKAKSDCRGTHSTRRVCSV  
 DLIKSNVW

TRTRPLE - GFP Tag - V

**Restriction Sites:** SgfI-MluI

**Cloning Scheme:**



**ACCN:** NM\_028181

**ORF Size:** 1914 bp

**OTI Disclaimer:** The molecular sequence of this clone aligns with the gene accession number as a point of reference only. However, individual transcript sequences of the same gene can differ through naturally occurring variations (e.g. polymorphisms), each with its own valid existence. This clone is substantially in agreement with the reference, but a complete review of all prevailing variants is recommended prior to use. [More info](#)

**OTI Annotation:** This clone was engineered to express the complete ORF with an expression tag. Expression varies depending on the nature of the gene.

**Components:** The ORF clone is ion-exchange column purified and shipped in a 2D barcoded Matrix tube containing 10ug of transfection-ready, dried plasmid DNA (reconstitute with 100 ul of water).

- Reconstitution Method:**
1. Centrifuge at 5,000xg for 5min.
  2. Carefully open the tube and add 100ul of sterile water to dissolve the DNA.
  3. Close the tube and incubate for 10 minutes at room temperature.
  4. Briefly vortex the tube and then do a quick spin (less than 5000xg) to concentrate the liquid at the bottom.
  5. Store the suspended plasmid at -20°C. The DNA is stable for at least one year from date of shipping when stored at -20°C.

**Note:** Plasmids are not sterile. For experiments where strict sterility is required, filtration with 0.22um filter is required.

**RefSeq:** [NM\\_028181.5](#)

RefSeq Size: 2689 bp

RefSeq ORF: 1917 bp

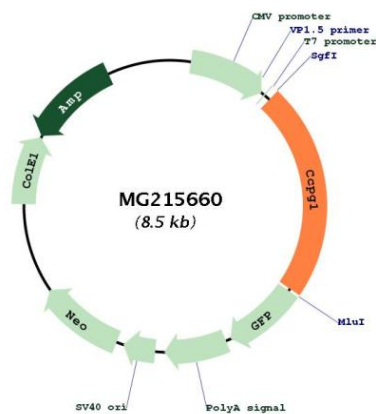
Locus ID: 72278

UniProt ID: [Q640L3](#)

Cytogenetics: 9 40.08 cM

**Gene Summary:** Acts as an assembly platform for Rho protein signaling complexes. Limits guanine nucleotide exchange activity of MCF2L toward RHOA, which results in an inhibition of both its transcriptional activation ability and its transforming activity. Does not inhibit activity of MCF2L toward CDC42, or activity of MCF2 toward either RHOA or CDC42. May be involved in cell cycle regulation.[UniProtKB/Swiss-Prot Function]

### Product images:



Circular map for MG215660