

## Product datasheet for **MG215648**

### 2010111I01Rik (NM\_028079) Mouse Tagged ORF Clone

#### Product data:

Product Type:	Expression Plasmids
Product Name:	2010111I01Rik (NM_028079) Mouse Tagged ORF Clone
Tag:	TurboGFP
Symbol:	2010111I01Rik
Synonyms:	2300006M17Rik; Ao pep; AP-O
Mammalian Cell Selection:	Neomycin
Vector:	pCMV6-AC-GFP (PS100010)
E. coli Selection:	Ampicillin (100 ug/mL)



[View online »](#)

ORF Nucleotide  
Sequence:

>MG215648 representing NM\_028079  
Red=Cloning site Blue=ORF Green=Tags(s)

TTTTGTAATACGACTCACTATAGGGCGGCCGGGAATTCGTCGACTGGATCCGGTACCGAGGAGATCTGCC  
GCC**CGCATCGCC**

ATGGACATAAAGCTGGACCCCTCCCGGGATGATCTGCCTCTCATGGCCAACACCAGCCACATGCTTGTGA  
AGCACTACATACTGGATTTGGATGTGGACTTTGGAAATCAAGTCATTGAGGGCAACATAGTGCTTTTCTT  
TGGAGATGGAAACAGATTTAAAAACAGTCGCGTTCTACCCAGGAAACCTTCCAGATGGAGTCAGAGGAG  
GCTGACATATTTAGGACAGCTGAACCTGCCATGTTTCTGAGATGGATTCGAGTACCTTCTCACCTAAGA  
TGGGACATAGAGAATGTGCAGTCTGTGGTAAAGGTGATCAAGATGCCTTTGATAACGATGGTAACCATGA  
CAACCAGGAACGTGATTCTGAGATCTCTAGCTCAAAGTACTGCTGTGACACAGGGAATCATGGGAAAAGG  
GATTTCTGTAGTGTGGACTGCTGTGATTTATCTGTGCTAAAGGTAGAGGAGGTGGATGTGGCTGCTG  
TGCCAGGCCTTGAGAAATTTACTAAAGCTCAAAGCTCTTGGCTACTCCTGAGAAGCTCAGGTGTGAGAT  
TGTCCGTGACCTTGTGGCTCTGCCTGCAGATGCTTGGAGGGAGCAGTTAGACTGTACACTCGTTGCAGC  
CAGGCTCCTGGCTGTGGGAGCTTTGATTGACTCTGACAATTGGAGCTTACGGATCAGGAAGACCGGGGA  
CTTCGACACCTGCTGACTTTCTCGTGCCATCAGAATATGGTATAAAACTAAACCTGAGGGGCAGTCAGT  
AGCTTGGACAACAGACCAGAATGGCAGGCCATGTGTTTATACTATGGGATCCCCCATCAACAACAGGGCC  
CTTTTTCCATGCCAGGAACACCCGTTGCCATGTCAACATGGCAGGCTACAGTTCGAGCAGCTGCATCTT  
TTGTTGTTTTAATGAGTGGAGAAAATTTGCCAAGCCACACCACTTCGAGAAGGATACATGAGCTGGCA  
TACTATGTGACCATGCCAATGCCGGCTCTACCTTTGCAATTGCAGTGGGGTCTGGACAGAAATGAAG  
CCCAAGGCATCCCACCAGATGATCTGATGACTGAGCACTCTCTCCCCCTCTGCCATCGGAAGCGGACT  
TGAGGTATGATAACACCTGCAATCATATGGAATACCTTGCAGGTTCCAGAGTGGCTCCGCTGCCTCCCA  
GGACATATTCTTATCGAGTGTGGCCAGTGTGCCTTGGAGGTGCCTGCAAGAGGCCCTGCTGTGG  
CTGATCCCTTCTGCTCTCAGCTGCACACTCTGTCTGGGAACACACCTTTTCTCCCGGCTGGACATAC  
TCATTGTCCCACCAACTTTCCAAGTCTGGGAATGGCCAGCCACACATCATCTTCTCTCAGAGCAC  
CTTAACAGGCACGAGCCATCTCTGTGGGACCCGCTTTGCCATGAAATTGCTCACTCCTGGTTTGGCCTA  
GCCATTGGGGCCCGAGACTGGACAGAGGAGTGGCTCAGTGAAGGATTTGCCACGCATTTGGAAGATATAT  
TTTGGGCTGAGGCACAGCAGCTGCCCCCCATGAGGCCCTGGAGCAGCAGGAGCTGAGGGCTTGCCTGCG  
CTGGCACCGCCTGCAGGATGAGCTTCGGAACCTCCAGAGGGAATGCAGGTGTTAAGACCAACAAAGAA  
GAGACTGGCCATGTGAGTCTCAGGTGCATCTGTTGTCAAGCATGGACTCAATCCAGAGAAGGGCTTCA  
TGCAGGTTCACTTAAAGGGCTACTTCTTCTCGGTTCTTAACCAGAACACTTGGAGAGAAAATTTA  
TTTTCCGTTTTTAAGAAAATTTGTGCATCTGTTTCATGGGCAGCTGATTCTTCCAGGATTTTCTTCAA  
ATGCTGTTGGAGAACATTCCAGAAAACAAAAGGCTCGGCCTGTCTGTTGAGAACATCGTCCGAGATTGGC  
TTGAGTGTTCGGAAATACCTAAGGCGCTGCAGGAGGAGCGCAAGGCCGAGGACTGCTCGCCGAGTAGGCT  
CGCACGGCAAGTAGGCTCCGAGGTGGCGAAATGGATTGAGTCAACCGCAGACCCCGAAAACGCAACCGA  
GGGAAGCGAGAAGTCGCCTTTGAAAAGCTTTCTCCAGACCAGATCGTCTTGCTTTGGAGTGGCTCTTAG  
AGCAGAAGACGCTGAGCCCTCAGACACTGCACTGTCTCCAGCAGACTTACCATCTCCAGAGCAGGATGC  
AGAGTTCCGCATCGATGGTGTGAACCTGGTTATTAAGCACAAGTACACAAAGGCATACAATCAGGTGGAG  
AGGTTCTACTGAGGACCAGGCCATGGGCATATACCTGTATGGGGAGCTGATGGTGAAGTGAAGACGCCA  
GGCTGCAGCAGCTAGCCACAGGTGCTTTGAGCTGGTGAAGGAACACATGGACAGAGCATCGGCCAGGT  
GGTGAAGTGAATGCTGTTC

**ACCGT**ACGCGGCCGCTCGAG - GFP Tag - GTTTAA

Protein Sequence: >MG215648 representing NM\_028079  
Red=Cloning site Green=Tags(s)

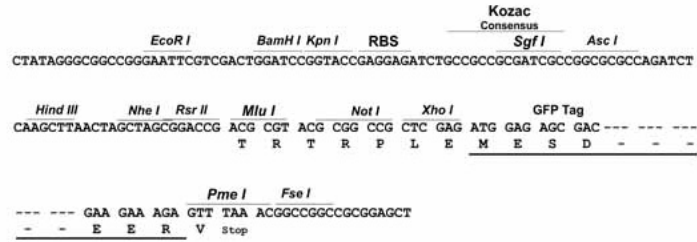
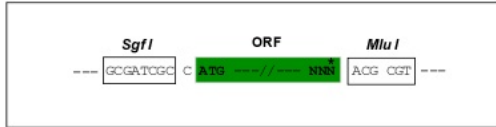
MDIKLDPSRDDLPLMANTSHMLVKHYILDLDVDFGNQVIEGNIVLFFGDGNRFKNQSRSTQETFQMESEE  
ADIFRTAEPCHVPEMDSSTFFSPKMGHRECAVCGKGDQDAFDNDGNHDNQERDSEISSSKYCCDTGNHGKR  
DFLLVLDCCDL SVLKVEEVDVAAVPGLKFTKAPKLLATPEKLRCEIVRDLVALPADAWREQLDCYTRCS  
QAPGCGELLIDSDNWSLRIRKGTSTPADFPRAIRIWKTKPEGQSVAWTTDQNGRPCVYTMGSPINNRA  
LFPCQEPVAMSTWQATVRAAASFVVLMSGENSAKPTPLREGYMSWHYYVTMPMPASTFAI AVGCWTEMK  
PKASPPDDLMEHSLPLSPSEADLRYDNTCNHMEYPCRFQSASAASQDIIPYRVFAPVCLLEGACQEALLW  
LIPSCLSAAHSVLGTHPFSRLDILIVPTNFP SLGMASPHIIFLSQSTLTGTSHLCGTRLCHEIAHSWFG  
AIGARDWTEEWLSEGFATHLEDIFWAEAQQLPPHEALEQQELRACLRWHRLQDELNSPEGMQVLRPNKE  
ETGHVSASGASVVKHGLNPEKGFMQVHYLKGYFLLRFLTRTLGEKIYFPFLRKFVHLFHGQLILSQDFLQ  
MLLENIPENKRLGLSVENIVRDWLECSGIPKALQEERKAEDCSPSRLARQVGSEVAKWIRVNRPRKRKR  
GKREVAFEKLSPDQIVLLEWLLLEQKTLSPQTLHCLQQT YHLPEQDAEVRHRWCELVIKHKYTKAYNQVE  
RFLLLEDQAMGIYLYGELMVSEDARLQQLAHRCFELVKEHMDRASAQVVTEMLF

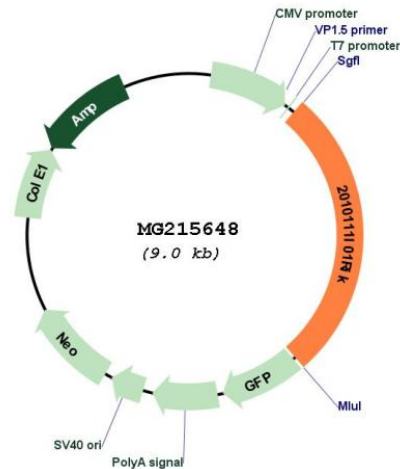
TRTRPLE - GFP Tag - V

Restriction Sites: Sgfl-MluI

Cloning Scheme:

Cloning sites used for ORF Shutting:



**Plasmid Map:**


**ACCN:** NM\_028079

**ORF Size:** 2469 bp

**OTI Disclaimer:** The molecular sequence of this clone aligns with the gene accession number as a point of reference only. However, individual transcript sequences of the same gene can differ through naturally occurring variations (e.g. polymorphisms), each with its own valid existence. This clone is substantially in agreement with the reference, but a complete review of all prevailing variants is recommended prior to use. [More info](#)

**OTI Annotation:** This clone was engineered to express the complete ORF with an expression tag. Expression varies depending on the nature of the gene.

**Components:** The ORF clone is ion-exchange column purified and shipped in a 2D barcoded Matrix tube containing 10ug of transfection-ready, dried plasmid DNA (reconstitute with 100 ul of water).

**Reconstitution Method:**

1. Centrifuge at 5,000xg for 5min.
2. Carefully open the tube and add 100ul of sterile water to dissolve the DNA.
3. Close the tube and incubate for 10 minutes at room temperature.
4. Briefly vortex the tube and then do a quick spin (less than 5000xg) to concentrate the liquid at the bottom.
5. Store the suspended plasmid at -20°C. The DNA is stable for at least one year from date of shipping when stored at -20°C.

**RefSeq:** [NM\\_028079.2](#), [NP\\_082355.1](#)

**RefSeq Size:** 3509 bp

**RefSeq ORF:** 2472 bp

**Locus ID:** 72061

**Cytogenetics:** 13 B3

**Gene Summary:**

Aminopeptidases catalyze the hydrolysis of amino acid residues from the N-terminus of peptide or protein substrates. Able to cleave angiotensin III to generate angiotensin IV, a bioactive peptide of the renin-angiotensin pathway. Not able to cleave angiotensin I and angiotensin II. May play a role in the proteolytic processing of bioactive peptides in tissues such as testis and heart.[UniProtKB/Swiss-Prot Function]