

## Product datasheet for **MG215638**

### Sync (NM\_023485) Mouse Tagged ORF Clone

#### Product data:

<b>Product Type:</b>	Expression Plasmids
<b>Tag:</b>	TurboGFP
<b>Symbol:</b>	Sync
<b>Synonyms:</b>	1110057H03Rik; SNIP4
<b>Mammalian Cell Selection:</b>	Neomycin
<b>Vector:</b>	pCMV6-AC-GFP (PS100010)
<b>E. coli Selection:</b>	Ampicillin (100 ug/mL)



**ORF Nucleotide Sequence:** >MG215638 representing NM\_023485  
 Red=Cloning site Blue=ORF Green=Tags(s)

TTTTGTAATACGACTCACTATAGGGCGCCGGGAATTCGTGCGACTGGATCCGGTACCGAGGAGATCTGCC  
 GCCGCGATCGCC

ATGCCAGCCCGGAACCCCTGCGCGCGGGGACGGCGCCCGGGCCTCGAGGGAACCACACACCGAGGAGA  
 GTTTTCCTCTTCAGGAGTCAGAATCCCCGAAGGAGGCCAAGACCTTTAACCCAGAGGCCACTCTGTCTTT  
 GGAGGGGACTGTGAACCTAGAGGACATTCTCTATCTGGGGGCATCGGGGACTTTGAAGAGAGTTTTTAT  
 GAGGAAGAATATGAGAAGCCAGCACAGACTGTTTATCGACGAATCGAGGCAGCCAGACGAGGCGCTGG  
 GCCTAGAAGAGCCCGTGCGCCAGAGGAGATGCTGTCTGTGGAGGAATCCGTGACCCAGATGAGGTGCA  
 AATTTTCAGAGCAGCTGTGGAGCCAGCTAAGAGCCAACTGCTTTGTGAGGGAGAAATGGTGCCACGGAG  
 GGAAGCCTGCCTGCTCAACCGATTCCCAACACCGAGGAGGATCCCCTCAGCGTGGAGGACCTGGAGCGGC  
 TGAAGCTCGTTTCCAGCAGTGTGTACAAGCCGTGCCAGCTGGAAGAGGAGAGGGACCAGCTAATCCA  
 CGAGCTCGTCTACTCCGGGAGCCAGCCCTGCAGGAGGTGCAGCAAGTCCACCAGGACATCTGGCTGCC  
 TACAAGCTCCACGCACAGGCAGAGCTGGAGAGGACGGGCTCAGGGAGGAGATCCGGACGGTGAAGCAGA  
 AGCTGTTCAAGGTGACCAAGGAATGCGTGGCTTACCAATACCAGCTGGAGTGCCGTCAGCAGGATGTGGC  
 TCAGTTTCCGACTGCAGGGAAGCGCTGACCACTCGGGCAGCCAGCTCTCGGAAGAAGTACCCAGCTC  
 CGAGATGCCGTGCAGAAGCAGAAGGAGCAGTTACAGCAACAAGTGAAGCACCACCCGACCCAGAGCGATG  
 GGCACCTTTCTCCAGGAGAGCCGACGGCTGTCGACACAGTTTGAAAATCTCATGGCCGAGAGCCGCGCAGGG  
 CCTGGAGGAGGAGTATGAGCCTCAGCTGCTCCGGCTCCTGGAAGGAAAGAGGCGGGACCAAGCTCTA  
 CAGGACACCCAGGCGGAGATCCAGGAGATGAGGGAGGCTCTGCGACCCCTGGAAGCAGAGGCGCGCAGC  
 TCCAATTCAGAACAGGAACCTGGAGGACCAGATCACGCTCGTGAGGCAAAAACGCGATGAAGAGTTCA  
 ACAGTACAGGGAGCAGCTGGAGGAGATGGAGGAGAGACAGAGGCAGTTGCGCAGTGGGTGCAAGTTCAG  
 CAACAGAAGAAAGGAGATGGAGCGGCTGAGGACGAGCCTTGCTGAAGAGCTTCCACATATAAGGCTA  
 TGCTACCCAAGAGTCTGGAACAGGCTGATGCCCCACTTCTCAGGCAGGTGGAGTCGAGGCCCAATCCCC  
 AGGACTGTT

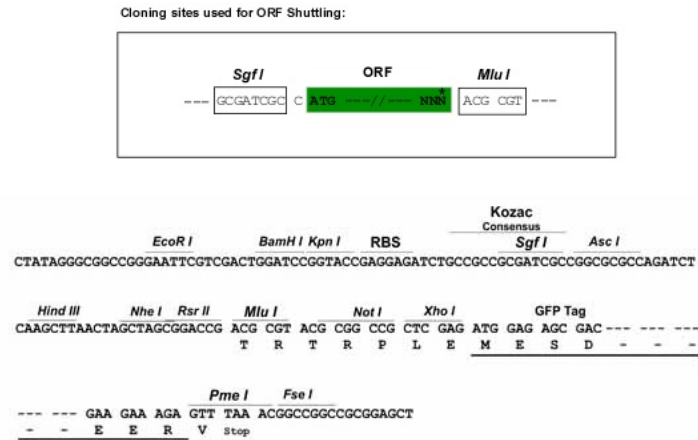
ACGCGTACGCGGCCGCTCGAG - GFP Tag - GTTTAA

**Protein Sequence:** >MG215638 representing NM\_023485  
 Red=Cloning site Green=Tags(s)

MASPEPLRGGD GARASREPHT EESFPLQESESPKEAKTFNPEATLSLEGTVNLEDILYLGASGDFEESFY  
 EEEYEKPAQTLFIDE SRQPDEALGLEE PVRPEEMLSV EESVTPDEVQISEQPVEPAKSPTACEGEMVATE  
 GSLPAQPIPNTEEDPLSVEDLERLEARFQQCVQAVSQLEEERDQLIHEL VLLREPALQEVQVHQDILAA  
 YKLHAQAELE RDGLREEIRTVKQKLFKVTKECVAYQYQLECRQQDVAQFADCREALTTRAAQLSEELTQL  
 RDACQKQKEQLQQLEAPPTQSDGHFLQESRRLSTQFENLMAESRQGLEEEYEPQLLRLLERKEAGTKAL  
 QDTQAEIQEMREALRPLEAEARQLQLQNRNLEDQITLVRQKRDEEVQYREQL EEMEERQRQLRSGVQVQ  
 QQKNKEMERLRTSLAEELSTYKAMLPKSLEQADAPTSQAGGVEAQSPGTV

TRTRPLE - GFP Tag - V

**Restriction Sites:** SgfI-MluI

**Cloning Scheme:**


**ACCN:** NM\_023485

**ORF Size:** 1410 bp

**OTI Disclaimer:** The molecular sequence of this clone aligns with the gene accession number as a point of reference only. However, individual transcript sequences of the same gene can differ through naturally occurring variations (e.g. polymorphisms), each with its own valid existence. This clone is substantially in agreement with the reference, but a complete review of all prevailing variants is recommended prior to use. [More info](#)

**OTI Annotation:** This clone was engineered to express the complete ORF with an expression tag. Expression varies depending on the nature of the gene.

**Components:** The ORF clone is ion-exchange column purified and shipped in a 2D barcoded Matrix tube containing 10ug of transfection-ready, dried plasmid DNA (reconstitute with 100 ul of water).

**Reconstitution Method:**

1. Centrifuge at 5,000xg for 5min.
2. Carefully open the tube and add 100ul of sterile water to dissolve the DNA.
3. Close the tube and incubate for 10 minutes at room temperature.
4. Briefly vortex the tube and then do a quick spin (less than 5000xg) to concentrate the liquid at the bottom.
5. Store the suspended plasmid at -20°C. The DNA is stable for at least one year from date of shipping when stored at -20°C.

**Note:** Plasmids are not sterile. For experiments where strict sterility is required, filtration with 0.22um filter is required.

**RefSeq:** [NM\\_023485.3](#), [NP\\_075974.3](#)

RefSeq Size: 2038 bp

RefSeq ORF: 1413 bp

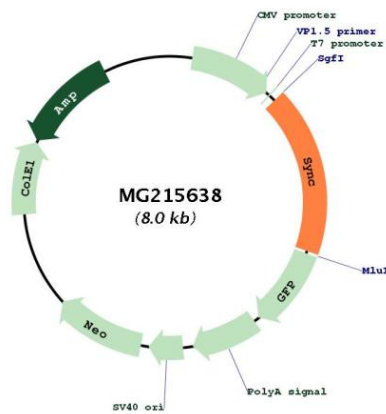
Locus ID: 68828

UniProt ID: [Q9EPM5](#)

Cytogenetics: 4 63.26 cM

**Gene Summary:** Atypical type III intermediate filament (IF) protein that may play a supportive role in the efficient coupling of mechanical stress between the myofibril and fiber exterior. May facilitate lateral force transmission during skeletal muscle contraction. Does not form homofilaments nor heterofilaments with other IF proteins.[UniProtKB/Swiss-Prot Function]

**Product images:**



Circular map for MG215638