

Product datasheet for **MG215628**

Gemin5 (NM_001166669) Mouse Tagged ORF Clone

Product data:

Product Type:	Expression Plasmids
Product Name:	Gemin5 (NM_001166669) Mouse Tagged ORF Clone
Tag:	TurboGFP
Symbol:	Gemin5
Synonyms:	AA407055; AA407208; AI451603; BB194447; C330013N08
Mammalian Cell Selection:	Neomycin
Vector:	pCMV6-AC-GFP (PS100010)
E. coli Selection:	Ampicillin (100 ug/mL)
ORF Nucleotide Sequence:	>MG215628 representing NM_001166669 Red=Cloning site Blue=ORF Green=Tags(s)

TTTTGTAATACGACTCACTATAGGGCGGCCGGAATTCGTCGACTGGATCCGGTACCGAGGAGATCTGCC
GCC**CGATCGCC**

ATGAAGCCGGAGCCGGACGCTGCCGCCGCCCACTGGTACTGCTCAGCTGCAGCGACGCGGCGC
CCGGAGGCATCTTTGGCTTCGCTGCGCGGACCTCCGTCTTCTCGTCCGCGTGGTCCGGTCCGGGCGC
GAGCCCAGGGGCGCCCCGTTTCGAGTGGTAGGAGAGTTGGTGGGACACACTGAAAGAGTATCTGGTTTC
ACTTTTTCTCATCACCTGGACAATAAACCTCTGTGCCACCAGCTCAGACGATGGAAGTGTGAAGTTT
GGGATGTAGAGACCAAGACTGTAGTGACAGAACACACTCCATCAGCATACAATATCAGCACTGCATTG
GTCTCCGACAGTTAAGGACTTAATAGTCTCTGGGGATGAAAAAGGAGTCGTTTTCTGTTACTGGCTAAC
AGAAATGACAGCCAGCACCTCTTACAGAGCCAGGACCATATTCGTCTGACGTGTTACCTCATCACG
AAAATCTAGTAGCCATTGGCTACAAAGATGGCATAGTGGTTATCATTGACATCAGTAAAAAGGGAGAAGT
TATTCACAGACTTCGAGGCCACGATGATGAGATCCACTCCATAGCCTGGTGTCTCTGTCTGGTGAAGAC
TGCTTATCCATCAGCCAAGAGGAAAACCGAAGAACCTGACATTCCTCAATGGGAAGCTTATAGCAGAAA
CCCCATCACAAAAGGCTGCTACTTAGCCACAGGAAGCAAAGATCAGACCATTGCAATCTGGAGCTGTC
CCGCGGCCGGGTGTAATGGTTTTGAAATTGCCCTTCTGAAGAGAAGAAGTGGGGTGTGGACCAACA
GTTAAAGAACGGCTTTGGTTGACACTTCATTGGCCTAAGAACAACACAGCTGGTATCCAGTTGTT
TTGGAGGTGAGCTGCTGCTATGGGACCTCACCCAGTCATGGAGCGGAAGTACACGCTCTTCAGCACCTC
AGCAGAAGGGCACAATCATTCCAGAATTGTCTTCAATCTGTGTTCTCTGAAGACTGAAGTGGCAAGCAG
CTGCTACTGTCCACATCCATGGATAGAGATGTAATGTTGGGACATGGCCACCCTGGAGTGTGCTGGA
CATTGCCCTTCTTGGAGTTTTGCCTACAGCCTGGCCTTTTCTCCTGTGGACGTGGGCTCCCTGGCCAT
AGGTGTTGGGACGGCATGATCCGGGTGTGGAATACACTCTCCATAAAGAACAACACGACGTGAAAAAC
TTCTGGCAAGGAGTCAAGTCCAAGGTACACGCGTATGCTGGCACCAACAAGGAAGGCTGCTTAGCCT
TCGGGACCGATGACGAAAAAGTGGGATTGTATGACACCTGCTCCAACAACCTCCACAGATTTCAAGCAC
GTATCATAAGAAGACCGTGTATAGTGGCTTGGGGCCACCAGTCCCCCATGCACTGGAGGGGAA



[View online »](#)

GGAGACAGGCCTTCCCTCACCTTGTACAGCTGTGGAGGGGAAGGCGTTGTGCTACAGCATAACCCCTGGA
 AGCTCAGTGGAGAGGCCTTCGACATCAACAACTCGTGGAGGACACCAACTCCATTAGATACAACTGCC
 CGTGCACACAGAGATCAGCTGAAAGGAGATGGCAAAGTCTGGCTCTTGGGAATGAAGATGGATCAATA
 GAAATATTCCAAGTCCCCAATTGAGGCTGCTGTGCACCATCCAGCAGCACCACAAGCTTGTGAACGCCA
 TAGTCTGGCACCATGAGCATGGCAGCCGTCCAGAGCTGAGCTGTCTCCTTGTCTTGGCTCCAACAATGC
 AGTCATCTACGTGCACAACCTGAAAGCAGTCTAGAAAGCAATCCTGACTCTCCAATAACCATCACAGAA
 CCCTACCGCACCCTCTCGGGGCACACGCCAAGATTACCAGTCTGGCATGGAGCCACATCATGACGGAA
 GGCTGGTATCTGCTTGTACGATGGCACAGCTCAGGTGTGGGATGCCCTCCGGGAAGAACCCTTGTCAA
 TTTCCGAGGACATCGAGGCCGGCTGCTATGTGTGCGTGGTCCCCAGTGGATCCAGAATGCATCTACTCA
 GGTGCAGATGACTTCTGTGTCTACAGGTGGCTGACTTCCATGCAGGACCATCCCGCCTCCTCAAGGGA
 AAAATGTATTGAACTAGAGAAAAACGGCTCTCTCAATTTAAGCCAAAGCTTAAAAAGAAGAAAAAACC
 TACCTTGCAGTGCCTGTAAAGCAGGATTCATCCGTTGGCAATGAAGATGAGAGTGTAAAGGAGAACTCT
 GGACCTGCTGAGAATGGCTTGTCCGACCAGGATGGTGAGGAGGAAGCCCAGGAGCCAGAGCTGCCTCCCT
 CTCTGTAGTTTGTGTAGAACCCTGTTTCTGTACTGACATTTCTCAGGCTTTGAAAAGTCAAAGTCAAC
 TGTTAGTAGCAAAGCCACCTCACTGAAAAAGGAGCCACCTAAAGAGAAGCCAGAAGCCTTGTCAAGAAG
 AGGAAGGCTCGCTCCATGCTCCCTCTGAGCACCAGCTTAGACCACAGGTCCAAAGAGGAGCTCCATCGAG
 ACTGCTTGGTACTAGCAACTGCAACACACGCCAAAGCAGAATAAATGAAGATGTGTCTGCCGACCTTGA
 GGAACGATTCCACTTGGGCCTTTTACAGACAGGGCTACTCTATACAGGATGATGGAAACAGAAGGGAAA
 GGTCACTTGGAAAGTGGCCACCCGAGCTTTTTACCAGCTCATGCTCTGGAAAGGAGATCTGAAGGGTG
 TTCTCCAGGCTGCAGCAGAGAGAGGGGAGCTGACAGACAGTCTCGTGGCTGTGGCACCAGTGGCTGGCTA
 CAGTGTATGGCTGTGGGCTGTGGAAGCCTTTGCCAAGCAGCTGTGTTCCAGGACCAGTACGTCAAGGCT
 GCCTCTTATCTGCTATCCATCCACAAGTGTACGAAGCTGTGAACTTCTCAAGTCAAACCATCTCTACA
 GAGAAGCTATTGCAGTTGCCAAGGCTCGCCTGCGCCCTGAGGACCCTGTTCTGAAGAACTATAACTCAG
 CTGGGGTCCATCCTGGAGAGAGATGGCCACTATGCTATTGCAGCCAAGTGTACTTAGGAGCCACTTCC
 GCCTATGATGCAGCCAAAGTTCTGGCCAGAAAGGAGATGCAGCCTCACTTAGAACAGCTGCAGAGCTGG
 CTGCCATAGCAGGAGAACATGAGCTGGCTGCTTCCCTGGCTCTTAGATGTGCCAAGAGCTGCTTCTGGT
 GAAGAAGTGGGTGGTGCACAAGAAGCATTGGGACTGCATGAAAGCTGCAGGGCCAGAGACTGGTCTTC
 TGCCTCCTTGAATTTCTATGCCGGCACCTGGAGGAAAAACAGCCTCTAGAGGTGAGAGGCCCTCTTCCA
 TTTACCACAGTGGGCCACAGTTCTGAGGAACTTGGTGCAGAGAGTAACCGGTGTGTGGCGCAGCGC
 CTTCAAGTGGACACCCCGGAGCAGTGTACAGCCGCTTACAGAAGCTGCAGGATGTCAAGTACCCATCA
 GCAACAAGTAACACTCCCTTTCAGACAGCTGCTGCTTTCATGTCTGCCATGACCTGACCTTGGCAATGCTGA
 GCCAGCAGGCTGCTGCCTGGGAGGAGGAGTGCCTGCTGCTGTCAGGCTGTGGTTCGGAGCTATACCTC
 AGGAACTTACCCCTCATGCAGGAAATCTACTAGCCTTTCTCCAGGTGGCTGTGACCCTACGAGAC
 AAAGTGGGTGACCTCTCTCCTGCCATGGCAGCTTACAAAAGCTTAGAGGCCTTTTGTATTATGGGCAAC
 TGTATGAAGTCTGGTGGTTCGCTCTGTGGCCTGGCCCTGAATCAAGCGTCTGGGTGTTGTGAGCTGAAA
 CACGGTCTCTGATAAACAGAGCAAGCCAGAGGACAGTGGCGGTGCTGAGGACATGGAACAGCCTCCAGGC
 CCGGGCCCGAGGCTCAGTGCAGAGAGTGTGAGCGTTTGTGAGTGCCTGCAAGGAGCTTTTCTCAGAACGGC
 ATGCCAGCCTGCAGACCTCCAGAGGACTGTAGCCGAAGTCCAAGAGACACTGGCAGAAAATGATCCGCCA
 GCACAAAAGAGTCACTCTGCAAGGCCACAACAATGGTCCCAGCAGAGATGAACCCAGCAGAGATGAA
 CCCAGCCAGGAAGCAGAGCGGGCTCCTTCTCAGCCTCCGAGCCCAACAGAAGAAAGAAATGCACCAAGTGT
 CTCTCCCTGAATTAACAGAAAGGCTCACAGAGGCAAAATGAGAGAATAGCAGAGTTTCCAGAGACTGTAAA
 GGCTGGCCCTTCCAGATGTGCTGGAGTGTGTCTGCTTGTCTTACATTGGGTCCCAGTGTCTGAC
 GCTGTGGACCCTGAGATGCAGCAACAGGCCAGGAGCTCCTTACAAGTATGGGCACACTCGAGCTTACA
 GAAGACACTGCCAGAGTCGGCACAG

ACGCGTACGCGGCCGCTCGAG – GFP Tag – GTTTAA

Protein Sequence: >MG215628 representing NM_001166669
 Red=Cloning site Green=Tags(s)

```

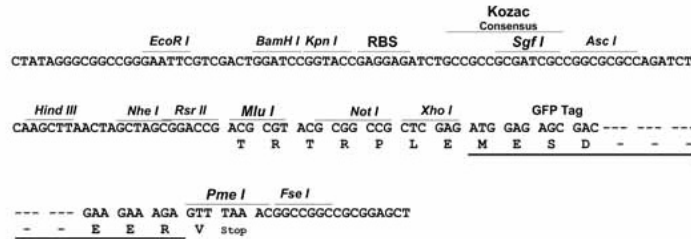
MKPEPRTLPPSPNWCYRCSDAAPGGIFGFAARTSVFLVRVGPAGASPGAPPFRVVGELVGHTERVSGF
TFSHHPGQYNLCATSSDDGTVKVVDVETKTVVTEHTLHQHTISALHWSPTVKDLIVSGDEKGVVFCYWLN
RNDSQLFTEPRTIFCLTCSPHHENLVAIGYKDGIVVIIDISKKEVIHRLRGHDDEIHSIAWCPLSGED
CLLSISQEEENSEEPPDIPNGKLI AETPITKGCYLATGSKDQTIIRIWCSCRGRGVMVLKLPFLKRRSGVDPT
VKERLWLT LHWPKNQPTQLVSSCFGGELLWDLTQSWRRKYTLFSTSAEGHNHSRIVFNLC SLKTEDGKQ
LLLSTSMDRDVKCWDMTLECCWTLPSLGGFAYSLAFSPVDVGS LAIGVGDGMIRVWNTLSIKNNYDVKN
FWQGVKSKVTALCWHPNKEGCLAFGTDDGKVGLYDTC SNKPPQISSTYHKKTVYRLAWGPPVPPMSLGGE
GDRPSLTLYSCGGEGVVLQHNPKLSGEAFDINKLVRDTNSIRYKLPVHTEISWKGDGKVLALGNEDGSI
EIFQVPNLRLCTIQQHKL VNAIVWHHEHGRPEL SCLLASGSNNAVIYVHNLKAVLESNPDPSPITITE
PYRTL SGHTAKITSLAWSPHHDGRLVSACYDGT AQVWDALREPLFNFRGHRGRLLCVAWSPVDPECIYS
GADDFCVYRWL TSMQDHSRPPQGGKCI ELEKKRLSQFKPKLKKKKKPTLRLPVKQDSSVGNEDSVKENS
GPAENGLSDQDGEAAEQPELPPSPVVCVEPVSCD ISSGFEKSKVTVSSKATSLKKEPPKKEPEALLKK
RKARSMLPLSTSLDHRSEELHRDCLVLATATHAKAELNEDVSADLEERFHLGLFTDRATLYRMMETEGK
GHLESGHPELFHQLMLWKGLKGVLQAAAERGELTDSL VAVAPVAGYSVWLWAVEFAKQLCFDQDYVKA
ASYLLSIHKVYEAVELLKS NHLYREAIYAVAKARLRPEDPVKEL YLSWGSILERDGHYIAAKCYLGATS
AYDAAKVLARKGDAASLRTAAELAAIAGEHELAASLALRCAQELLLVKNWVGAQEALGLHESLQQRVLF
CLLELLCRHLEEKQPLEVRGPSSIYHQWATGSEGLVQRVTGVWRSASFVSDTPEQCQAALQKLQDVKYPS
ATSNTPFRLQLLHVCHDLTAML SQQAAWEEAVPALLQAVVRSYTSGNFTLMQEIYSAFLPGGCDHLRD
KLGDLSPAMAAYKSL EAFCIYGQLYEVWWSL CGPGPESSVWVLSAESTVSDKQSKPEDSAGAEDMEQPPG
PGPRLSAESERLLSACKELFSERHASLQTSQRTVAEVQETLAEMIRQHQS LQCKATTNGPSRDEPSRDE
PSQEAERAPSQPPSPTEERNAPVSLPEL TRRLTEANERIAEFPE TVKAWPFPDVL ECLVLLHIGSQCPD
AVDPEMQQAQELLHKYGHTRAYRRHCQSRHT
  
```

TRTRPLE - GFP Tag - V

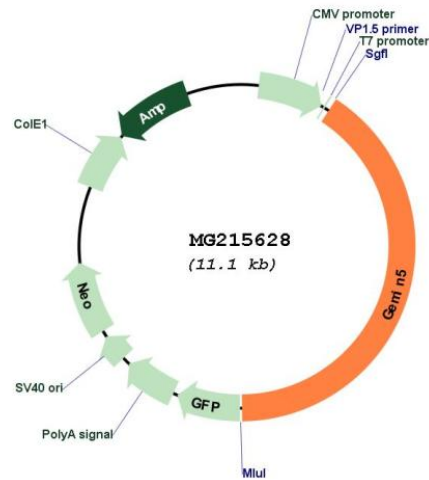
Restriction Sites: SgfI-MluI

Cloning Scheme:

Cloning sites used for ORF Shutting:



Plasmid Map:



ACCN: NM_001166669

ORF Size: 4509 bp

OTI Disclaimer: The molecular sequence of this clone aligns with the gene accession number as a point of reference only. However, individual transcript sequences of the same gene can differ through naturally occurring variations (e.g. polymorphisms), each with its own valid existence. This clone is substantially in agreement with the reference, but a complete review of all prevailing variants is recommended prior to use. [More info](#)

OTI Annotation: This clone was engineered to express the complete ORF with an expression tag. Expression varies depending on the nature of the gene.

Components: The ORF clone is ion-exchange column purified and shipped in a 2D barcoded Matrix tube containing 10ug of transfection-ready, dried plasmid DNA (reconstitute with 100 ul of water).

Reconstitution Method:

1. Centrifuge at 5,000xg for 5min.
2. Carefully open the tube and add 100ul of sterile water to dissolve the DNA.
3. Close the tube and incubate for 10 minutes at room temperature.
4. Briefly vortex the tube and then do a quick spin (less than 5000xg) to concentrate the liquid at the bottom.
5. Store the suspended plasmid at -20°C. The DNA is stable for at least one year from date of shipping when stored at -20°C.

RefSeq: [NM_001166669.1](#), [NP_001160141.1](#)

RefSeq Size: 6229 bp

RefSeq ORF: 4512 bp

Locus ID: 216766

UniProt ID: [Q8BX17](#)

Cytogenetics: 11 B1.3

Gene Summary: Required for the assembly of the SMN complex that plays a catalyst role in the assembly of small nuclear ribonucleoproteins (snRNPs), the building blocks of the spliceosome. Thereby, plays an important role in the splicing of cellular pre-mRNAs. Most spliceosomal snRNPs contain a common set of Sm proteins SNRPB, SNRPD1, SNRPD2, SNRPD3, SNRPE, SNRPF and SNRPG that assemble in a heptameric protein ring on the Sm site of the small nuclear RNA to form the core snRNP. In the cytosol, the Sm proteins SNRPD1, SNRPD2, SNRPE, SNRPF and SNRPG are trapped in an inactive 6S pICln-Sm complex by the chaperone CLNS1A that controls the assembly of the core snRNP. Dissociation by the SMN complex of CLNS1A from the trapped Sm proteins and their transfer to an SMN-Sm complex triggers the assembly of core snRNPs and their transport to the nucleus. GEMIN5 acts as the snRNA-binding protein of the SMN complex. Binds to the 7-methylguanosine cap of RNA molecules (By similarity). Binds to the 3' UTR of SMN1 mRNA and regulates its translation; does not affect mRNA stability (PubMed:25911097). May play a role in the regulation of protein synthesis via its interaction with ribosomes (By similarity).[UniProtKB/Swiss-Prot Function]