

Product datasheet for **MG215627**

Taok2 (NM_001163775) Mouse Tagged ORF Clone

Product data:

Product Type:	Expression Plasmids
Tag:	TurboGFP
Symbol:	Taok2
Synonyms:	1110033K02Rik; B230344N16; MAP3K17; mKIAA0881; PSK; PSK1; TAO1; TAO2
Mammalian Cell Selection:	Neomycin
Vector:	pCMV6-AC-GFP (PS100010)
E. coli Selection:	Ampicillin (100 ug/mL)

ORF Nucleotide Sequence: >MG215627 representing NM_001163775
Red=Cloning site Blue=ORF Green=Tags(s)

TTTTGTAATACGACTACTATAGGGCGGCCGGGAATTCGTGACTGGATCCGGTACCGAGGAGATCTGCC
GCCGCGATCGCC

ATGCCAGCTGGGGCCGGGCCGGGAGCCTGAAGGACCCTGATGTGGCTGAGCTCTTCTCAAGGATGACC
CTGAGAAGCTCTTCTCTGACCTCCGGGAGATCGGCCATGGCAGCTTTGGAGCAGTGTACTTTGCCCGGGA
TGTCCGGAACAGTGAAGTGGTGGCCATCAAGAAGATGTCTATAGTGGGAAGCAATCAAATGAGAAATGG
CAGGATATCATCAAGGAAGTGGCTTCTTACAGAAGCTACGGCATCCTAATACCATTCAAGTACCGGGGCT
GTTACCTGAGGGAGCACACAGCTTGGCTGGTGTGAGGATATTCCCTGGGCTCAGCTTCTGATCTTCTAGA
AGTGCACAAGAAACCCCTGCAGGAGGTAGAGATTGCAGCTGTGACCCATGGGGCTCTTCAGGCTGGCA
TATCTACACTCACACAACATGATCCATAGAGATGTGAAGGCTGGAACATCTTGCTGTCAGAACCAGGCT
TGGTAAACTGGGGACTTTGGCTCTGCGTCAATCATGGCACCTGCCAATCTTTTGGGTACTCCATA
CTGGATGGCTCCAGAGGTGATCCTAGCCATGGATGAGGGACAATATGATGGCAAAGTGGATGCTGGTCC
TTGGGGATAACCTGTATTGAGCTAGCGGAGCGGAAGCCACCACTGTTCAACATGAATGCAATGAGTGCCT
TATACCACATTGCACAGAATGAATCTCCTGCTCTCCAGTCAAGGACTGGTCTGAGTACTTCCGGAATTT
TGTTGACTCCTGTCTTCAAAAATCCCTCAAGACAGACCAACCTCAGAGGTTCTTTGAAGCACCCTTT
GTGCTCCGGGAGCGACCGCCACAGTCATCATGGACCTAATCCAGAGGACCAAGGATGCTGTACGGGAAC
TGGATAACCTGCAGTACCGAAAGATGAAGAAGATACTGTTCCAAGAGGCACCAATGGCCCTGGTGTGA
GGCCCCAGAGGAAGAGGAGCTCACACCCTGTTCCAGGAGGCAGAACCTTACACGCACCGTGCAGGGACA
CTGACCAGTCTAGAGAGCAGCCATTCAAGTCCAGCATGTCCATCAGCGCTCCAGCCAGAGCAGCTCAG
TCAACAGCCTAGCAGATGCCTCAGATAATGAAGAAGAGGAGGAAGAAGAAGAGGAAGAGGAGGAGGAGGA
GGAGGAAGAAGGCCCTGAATCCAGAGAGATGGCCATGATGCAGGAGGGGGAGCATACAGTCACTTCCCAC
AGCTCCATCATCCACCGCTGCCGGCTCAGACAACTATATGATGATCCCTACCAGCCAGAGATGACCC
CAGTCCACTCCAGCCACTGCAGCCCTCCACCTCCACTCCTCTTCTGCTCGCCGAGAGCTTATTG
CCGCAACCGAGACCACTTGTACCATTCGACTGCCTCCCTGGTCAAGGATCCAGGAGCATGAG
CAGGACTCAGCCCTGCGAGAGCAGTGAAGTGGCTACAAGCGGATGCGACGTCAGCACCAGAAGCAACTGC



TGGCCCTGGAGTCCCCTGCTGAGGGGTGAACGTGAGGAGCACAGTGGGCGTTACAGCGGGAGCTCGAGGC
ACAGCGGGCTGGCTTTGGGACCGAGGCTGAGAAGCTGGCCCGGAGGCACCAGGCCATTGGTGAGAAGGAG
GCACGGGCTGCTCAGCGGAGGAGCGGAAGTTCCAGCAGCACATCTGGGCAGCAGAAGAAGGAGCTGG
CCGCCCTGCTGGAGGCGCAGAAGCGAACCTACAAGCTGCGGAAGGAGCAGTTGAAAGAGGAGCTCCAGGA
GAACCTAGCACACCCAAACGAGAGAAGGCTGAGTGGCTGTTGAGGCAAAAGGAGCAGTTGCAACAGTGC
CAGGCAGAAGAGGAAGCGGGGCTGCTGCGGAGGCAGGCCAGTACTTTGAACCTCAGTGTGCCAATACA
AGCGCAAGATGCTACTGGCTCGGCACAGCCTAGATCAGGACCTGCTTCGAGAGGACTGAATAAGAAACA
GACACAGAAGGACTTGGAGTGTGCTGTGCTTACGGCAGCATGAGGCTACCCGAGAGCTGGAGCTAAGA
CAGCTCCAGGCTGTCCAGCGCACACGTGCTGAACCTACCCGCCTTCAGCACCAGACAGAAGTAGGCAACC
AGCTGGAGTACAACAAGCGACGGGAGCAAGAATTACGGCAGAAGCAGCGGCCAGGTTTCGCAGCAGCC
CAAGAGCCTCAAAGTACGTGCAGGCCAGCTACCCATGGGCTCCCTGCTACTGGGGCTCTGGGACCACTC
AGCACAGGCACCCCTAGTGAAGAGCAGCCTTGCTCATCTGGCCAGGAGGCAATCCTGGACCAAGAGTGC
TGGGAGAGGAGGGAAGCAGTGCCAGAGAGAAGGATTCTGGGAAAGGAAGGGACTACCTTGGAGCCAGA
GGAGCAGAGGATTCTGGGGAAAGAAATGGGAACCTTTAGTTCCAGCCCACAAAAACATAGGAGTCTGGCT
AATGAGGAAGATTGGGATATATCTGAGGAGATGAAGGAGATTAGAGTCCCATCACTGGCATCCCAGGAGA
GAAATATTATTGGCCAGGAAGAGGCAGCGCATGGAGTCTGTGGGAGAAGGAGGGTGGGAACCTTGTGGA
TGTGGAGTTCAAGCTTGGCTGGGTCCAGGGTCCAGTTCTGACTCCAGTCCCGGAGGAGGAAGAGGAGGAG
GAAGAAGAGGGAGGGGCTCCAATTGGAACCCACAGGGACCCCTGGAGATGGCTGTCTTCCCCAGATATCC
CCCCAGGCCACCTCCATCACATCTGAGACAGTACCCACTAGCCAGCTCCCTGGACTCCTGTCTCATGG
CCTCCTGGCTGGCCTATCCTTTGCAAGTGGGGTCCCTCCTGGCCTCCTGCCCCACTCCTCCTGCTGCTA
CTCCCATTTGCTGGCAGCCAGGGTGGAGGTGGCTTGCAGGCAGCACTGCTGGCCCTTGAGGTAGGGCTAG
TGGGCTGGGGGCTCCTACCTGTTCTTTGTACAGCTCTACACCTGCCCCCGGTCTGTTCTTACTCCT
GGCTCAGGGTACTGCAGTGTGGCTGTCTTAGCCTGAGCTGGCGCAGAGGCCATTATGGGTGTGCCTCTG
GGCCTTGGGGCTGCTGCTCCTAGCTTGGCCAGCCTGGCTTTACCTCTGGCAGCTATGGCAGCTGGGG
GCAAAATGGGTACGGCAACAAGGCCCCAGATGCGTCGGGGTATCTCTCGACTCTGGTTGAGGATTTTGTCT
ACGCCTGTACCCATGGTCTTTTCGGGCCCTACAGGGCTGTGGGGCTGTAGGAGACCGGGGGCTGTTTGGC
CTGTACCCTAAGACCAATAAGAATGGTTCCGAAGTCGACTACCTGTCCCTTGGCCCCGTGAGGAAATC
CTCGCACTACTCAACACCCCTAGCTCAGTTAACAAGAGTTTGGGCTGTGTGCAAGGGCTGGAACCTGGCG
CCTAGCACGGGCTAGCCACAGATTAGCTTCTTGTGCTTGGCCCCCTGGGCTGTTTACTATAGCCAGCTGG
GGCCTGCTTAAAGGTGAACGGCCTAGTCGGATCCCTCGGCTGCTGCCACGCAGCCAACGCCGCTTGGGC
TCTCTGCTTCCCGACAGCTACCACCAGGGACTGTAGCTGGGCGGAGATCTCAGACTCGCAGGACCCTGCC
TCCCTGGAGG

ACGCGTACGCGGCCGCTCGAG - GFP Tag - GTTTAA

Protein Sequence: >MG215627 representing NM_001163775
 Red=Cloning site Green=Tags(s)

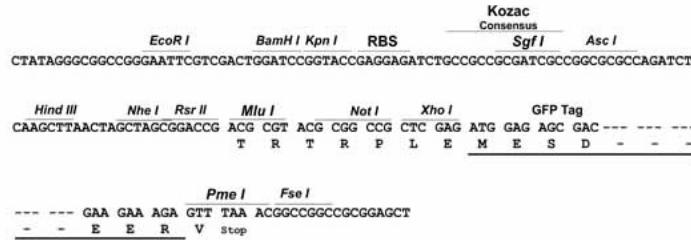
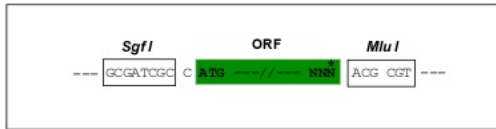
MPAGGRAGSLKDPDVAELFFKDDPEKLFSDLREIGHGSFGAVYFARDVRNSEVVAIKKMSYSYSGKQSNKWK
 QDIKEVRFLQKLRHPNTIQYRGCYLREHTAWLVMEYCLGSASDLLEVHKKPLQVEVEIAAVTHGALQGLA
 YLHSHNMIHRDVKAGNILLSEPLVKLGDFGSASIMAPANSFVGTPLYWMAPEVILAMDEGQYDGKVDVWS
 LGITCIELAERKPPLFNMNAMSALYHIAQNESPALQSGHWSEYFRNFVDSCLQKIPQDRPTSEVLLKHRF
 VLRERPTVIMDLIQRTKDAVRELDNLQYRKMKKILFQEAPNGPGAEPEEEELTPCSQEAEPYTHRAGT
 LTSLESSHSVPSMSISASSQSSSVNSLADASDNEEEEEEEEEEEEEEEEEEGPESREMMMQEGEHTVTS
 SSIHRLPGSDNL YDDPYQPEMTPGPLQPPAAPPTSTSSARRRAYCRNRDHFATIRTASL VSRQIQEHE
 QDSALREQLSGYKRMRRQHOKQLLALLESRLRGEREEHSGRLQRELEAQRAGFGTEAEKLARRHQAI GEKE
 ARAAQAEERKFQQHILGQKKELALLAQKRTYKLRKEQLKEELQENPSTPKREKAEWLLRQKEQLQCC
 QAEAAAGLLRRQRQYFELQCRQYKRKMLLARHSLDQDILLREDLNKKQTQKDLECALLRQHEATRELELR
 QLQAVQRTRAE LRLQHQTTELGNQLEYNKRREQLRQKHAQVRQPKSLKVRAGQLPMGLPATGALGPL
 STGTPSEEQPCSSGQEAILDQRMLGEEEEAVPERRILGKEGTTLEPEEQRI LGEEMGTFSSSPQKHRSLA
 NEEDWDI SEEMKEIRVPSLASQERNIIGQEEAAAWSLWEKEGNNLVDVEFKLWVQGPVLTVPVEEEEEEE
 EEEGGAPIGTHRDPGDGCPSPDIPPEPPPSHLRQYPTSQLPGLLSHGLLAGLSFVAVGSSGLLPLLLLLL
 LPLLLAAQGGGGLQAALLALEVLGVLGASYLFLCTALHLPPGLFLLLAQGTALLAVLSL SWRRGLMGVPL
 GLGAWLLAWPSLALPLAAMAAGKWWVRQGPQMRRI SRLWLRILLRLSPMVFRALQGCAGVDRGLFA
 LYPTKNKNGFRSRLPVWPVRQGNPRTTQHPLAQLTRVWAVCKGWNWRLARASHRLASCLPPWAVHILASW
 GLLKGERPSRIPRLLPRSQRRLGLSASRQLPPGTVAGRRSQTRRTLPPWR

TRTRPLE - GFP Tag - V

Restriction Sites: SgfI-MluI

Cloning Scheme:

Cloning sites used for ORF Shutting:



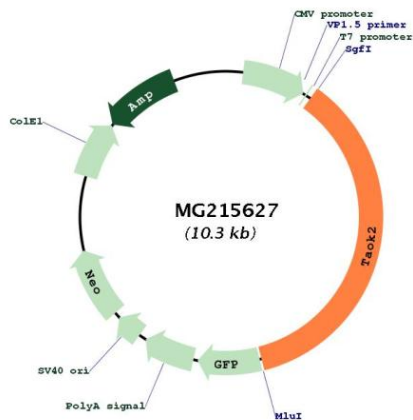
ACCN: NM_001163775

ORF Size: 3720 bp

OTI Disclaimer:	The molecular sequence of this clone aligns with the gene accession number as a point of reference only. However, individual transcript sequences of the same gene can differ through naturally occurring variations (e.g. polymorphisms), each with its own valid existence. This clone is substantially in agreement with the reference, but a complete review of all prevailing variants is recommended prior to use. More info
OTI Annotation:	This clone was engineered to express the complete ORF with an expression tag. Expression varies depending on the nature of the gene.
Components:	The ORF clone is ion-exchange column purified and shipped in a 2D barcoded Matrix tube containing 10ug of transfection-ready, dried plasmid DNA (reconstitute with 100 ul of water).
Reconstitution Method:	<ol style="list-style-type: none">1. Centrifuge at 5,000xg for 5min.2. Carefully open the tube and add 100ul of sterile water to dissolve the DNA.3. Close the tube and incubate for 10 minutes at room temperature.4. Briefly vortex the tube and then do a quick spin (less than 5000xg) to concentrate the liquid at the bottom.5. Store the suspended plasmid at -20°C. The DNA is stable for at least one year from date of shipping when stored at -20°C.
Note:	Plasmids are not sterile. For experiments where strict sterility is required, filtration with 0.22um filter is required.
RefSeq:	NM_001163775.2
RefSeq Size:	5270 bp
RefSeq ORF:	3723 bp
Locus ID:	381921
UniProt ID:	Q6ZQ29
Cytogenetics:	7 F3

Gene Summary:

Serine/threonine-protein kinase involved in different processes such as membrane blebbing and apoptotic bodies formation DNA damage response and MAPK14/p38 MAPK stress-activated MAPK cascade. Phosphorylates itself, MBP, activated MAPK8, MAP2K3, MAP2K6 and tubulins. Activates the MAPK14/p38 MAPK signaling pathway through the specific activation and phosphorylation of the upstream MAP2K3 and MAP2K6 kinases. In response to DNA damage, involved in the G2/M transition DNA damage checkpoint by activating the p38/MAPK14 stress-activated MAPK cascade, probably by mediating phosphorylation of upstream MAP2K3 and MAP2K6 kinases. May affect microtubule organization and stability. May play a role in the osmotic stress-MAPK8 pathway. Prevents MAP3K7-mediated activation of CHUK, and thus NF-kappa-B activation. Isoform 2, but not isoform 1, is required for PCDH8 endocytosis. Following homophilic interactions between PCDH8 extracellular domains, isoform 2 phosphorylates and activates MAPK14/p38 MAPK which in turn phosphorylates isoform 2. This process leads to PCDH8 endocytosis and CDH2 cointernalization. Both isoforms are involved in MAPK14/p38 MAPK activation (By similarity).[UniProtKB/Swiss-Prot Function]

Product images:

Circular map for MG215627