

Product datasheet for **MG215626**

Kel (NM_032540) Mouse Tagged ORF Clone

Product data:

Product Type:	Expression Plasmids
Product Name:	Kel (NM_032540) Mouse Tagged ORF Clone
Tag:	TurboGFP
Symbol:	Kel
Synonyms:	CD238; Ece3
Mammalian Cell Selection:	Neomycin
Vector:	pCMV6-AC-GFP (PS100010)
E. coli Selection:	Ampicillin (100 ug/mL)



[View online »](#)

ORF Nucleotide Sequence:

>MG215626 representing NM_032540
 Red=Cloning site Blue=ORF Green=Tags(s)

TTTTGTAATACGACTCACTATAGGGCGGCCGGAATTCGTCGACTGGATCCGGTACCGAGGAGATCTGCC
 GCC**CGCATCGCC**

ATGGGACCTCCCTGGAGCCAGGAGATTCTCCAGAAGAGAGGCTTCCCACTGAATGGAGCAGACAGTTGA
 CAAGAGCCAGATGGGTGCTGCTAGCTGTCTGCTCTGTGGCCTGCTCCTTGGTTCTTCTATGCTTTGGTT
 TTACATCTTCCGGAAGTGTGGTCTTGTCCATGTGAGACACCTGTGTGTATGGAGCTCCTGGACCATTAC
 CTGGCCTCTGGAACAGAAAGCGTGGCCCCCTGCACTGACTTTTTTTCAGCTTTGCCTGTGAAAAAGCCAATG
 GGACCAGTACTCTTCCAAGCACTTACAGAAGAGAACAAGAGCCGACTGTGGAGACTGTTGGAGGCCCC
 AGGGTCTGGCACCTAGGATCTGGAGAGGAGAAAGCCTTCCAATTTATAACTCCTGCATGGACACAGAT
 GCCATTGAAGCTTCAGGGTCTGGTCCACTCATACAAATATTGAAGAGCTTGGAGGCTGGAACATCACTG
 GCAACTGGACGCTCTGGACTTCAACAAAATCTGAGGCTTCTGATGAGTCAGTATGGCCACTTTCCATT
 CTTCCGAGCCTATCTACGACCTCATCCAGCCCCCTCCACATACACCAATCATCCAGATAGACCAGCCGGAG
 TTTGACATTCTTCTCCAGCAAGAGCAGGAACAGAAAGGTCTATGCTCAGATCCTACGGGAATATGTGACAT
 ACCTGAATAGGCTGGGAACATTACTGGGGAGTAACCCACAGGAAGCACAACAGCATGCCTCCTGGTCCAT
 CGTCTTTACCTCCCGGCTGTTCCAGTTTCTGGGGCCACAGCAGCAGCAGGCACAGGACAAGCTCTTT
 CATGTGTTACTATTGACGAAGTGCAGGAAATGGCCCCAGCCATCGACTGGTTATCCTGTTTACAAGCAA
 TATTCACACCGATGTCACTGAATTCCTCCAGACCCTCGTGGTCCATGACCTAGACTACTTGAGAAACAT
 GTCACAACCTGTAGAAGAAGGGCTGTGAATCACAGGGAGAGTATACAGAGCTACATGATCTTGGGGCTG
 GTGGATAACCTTTACCAGCACTGGACACTAAATTCAGGAGGCACGCAGAGAAGTATCCAGGAACACTAC
 GAAACTGCAAGAACGACCACCCTGCCAGCCTACCCTCGATGGATGAAGTGTGTGGAACAGACGGGAGC
 CTCTTTGAGCCTACTCTGGCAGCTCTGTTTGTTCGTGAAGCTTTTGGCCAAGCATTCAAAGTGTGCC
 ATGGAATATTTGCTGAGATAAAGGATGCTGTCATCATAACGCTCAAAAAGCTTTCTGGATAAGTGAGG
 AGACCCAGAAAGAGGCCTTGAACAAGCTTGCCAACTGCAGGTGGAGATGGGGGCACAAAACGGGCCGT
 GAAGCCTGACATAGCCACACAGGAATAAATGATATACAACTTGGTCCTAGTTTCCCTCAATCTTTCCTG
 AGCTGTGTACGATCCCTCCGGGCCAGAAATGTCCAGAGCTTCTTGCAGCCCTTCCCTACCACAGATGGC
 AGAAATCTCCCTGGGAGGTCAATGCTTACTATTCAATATCTGACCATATGGTGGTCTTCCCTGCTGGTCT
 TCTCAACCTCCATTCTCCACCCTGGTACCCCAGAGCTGTGAACCTTTGGCGTGTGGCAGCATCATG
 GCCATGAATTGTTGCATATCTTCTACCAACTTACTCCCTGGGGCTGCCAGCCTGTGACACCCATG
 TCCTACAAGAAGCACTTCTATGCCTGGAGCGCCATTATGCTGCCTTCCCTTTGCCTAGCATATCCTCGTT
 CAATGGTTCTCACACACTCCTGGAAAATGCTGCAGACATAGGAGGCGTAGCCATTGCATTCCAGGCATAT
 AGCAAGAGGATAGTAGAGCACTGGGGAGTTGACCCTGCCAACCTGGATCTTAGCCCCATCAACTTT
 TCTTCCGAAGCTATGCCAGGTAATGTGTAGGGGGCTGAGCTCACAAGACCCTCAGGACCCTCACAGTCC
 TCCAAGCCTTCGAGTCCATGGGCCCTGAGCAATACTCCAGATTTTGGCAAACATTTTCATTGTCCACGT
 GGGACCCTTCTGAATCCCTCTGCCCGTGAAGCTCTGG

ACGCGTACGCGGCCGCTCGAG - GFP Tag - GTTTAA

Protein Sequence: >MG215626 representing NM_032540
 Red=Cloning site Green=Tags(s)

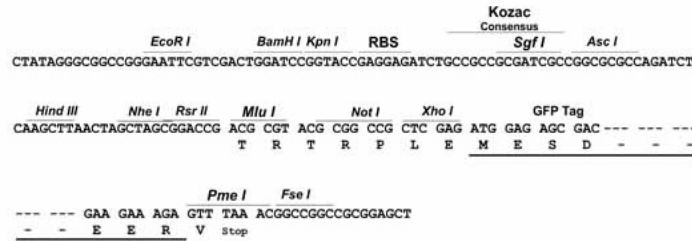
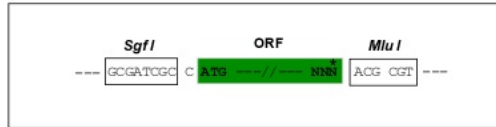
MGPPWSQESSPEERLPTEWSRQLTRARWVLLAVLLCGLLLGSSMLWFYIFRNCGPCPCETPVCMELLDHY
 LASGNRSVAPCTDFFSFACEKANGTSDSFQALTEENKSRLWRLLEAPGSWHLGSGEEKAFQFYNSCMDTD
 AIEASGSGPLIQIIEELGGWNITGNWTSLDFNQNLRLMSQYGHFPFFRAYLRPHAPPHTPIIQIDQPE
 FDILLQQEQEQVYQAQILREYVTYLNRLGTLGSLNPQEAQQHASWSIVFTSRLFQFLGPQQQQQAQDKLF
 HVVTIDELQEMAPAIDWLSCLQAIFTPMSLNSSQTLVVHDLDYLRNMSQLVEEGLLNHRESIQSYMILGL
 VDTLSPALDTKFQEARRELIQELRKLQERPPLPAYPRWMKVEQTGAFFFEPTLAALFVREAFGPSIQSAA
 MELFAEIKDAVIIRLKKLSWISSEETQKEALNKLAQLQVEMGAPKRAVKPDIATQEYNDIQLGPSFLQSF
 SCVRSRLRARNVQSFLQPFYPYHRWQKSPWEVNAYSISDHMVVFPAGLLQPPFFHGPYPRAVNFGAAGSIM
 AHELLHIFYQLLLPGGCPACDTHVLEALLCLERHYAAFPLPSISSFNGSHTLLENAADIGGVAIAFQAY
 SKRIVEHTGELTLPNLDLSPYQLFFRSYAQVMCRGLSSQDPQDPHSPSLRVHGPLSNTPDFAKHFHCP
 GTLLNPSARCKLW

TRTRPLE - GFP Tag - V

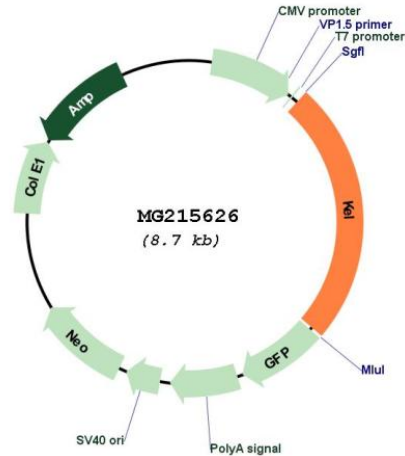
Restriction Sites: SgfI-MluI

Cloning Scheme:

Cloning sites used for ORF Shutting:



Plasmid Map:



ACCN: NM_032540

ORF Size: 2139 bp

OTI Disclaimer: The molecular sequence of this clone aligns with the gene accession number as a point of reference only. However, individual transcript sequences of the same gene can differ through naturally occurring variations (e.g. polymorphisms), each with its own valid existence. This clone is substantially in agreement with the reference, but a complete review of all prevailing variants is recommended prior to use. [More info](#)

OTI Annotation: This clone was engineered to express the complete ORF with an expression tag. Expression varies depending on the nature of the gene.

Components: The ORF clone is ion-exchange column purified and shipped in a 2D barcoded Matrix tube containing 10ug of transfection-ready, dried plasmid DNA (reconstitute with 100 ul of water).

Reconstitution Method:

1. Centrifuge at 5,000xg for 5min.
2. Carefully open the tube and add 100ul of sterile water to dissolve the DNA.
3. Close the tube and incubate for 10 minutes at room temperature.
4. Briefly vortex the tube and then do a quick spin (less than 5000xg) to concentrate the liquid at the bottom.
5. Store the suspended plasmid at -20°C. The DNA is stable for at least one year from date of shipping when stored at -20°C.

RefSeq: [NM_032540.2](#)

RefSeq Size: 2524 bp

RefSeq ORF: 2142 bp

Locus ID: 23925
UniProt ID: [Q9EQF2](#)
Cytogenetics: 6 19.86 cM
Gene Summary: Zinc endopeptidase with endothelin-3-converting enzyme activity. Cleaves EDN1, EDN2 and EDN3 (By similarity).[UniProtKB/Swiss-Prot Function]