

Product datasheet for **MG215623**

Npas3 (NM_013780) Mouse Tagged ORF Clone

Product data:

Product Type:	Expression Plasmids
Tag:	TurboGFP
Symbol:	Npas3
Synonyms:	4930423H22Rik; bHLHe12
Mammalian Cell Selection:	Neomycin
Vector:	pCMV6-AC-GFP (PS100010)
E. coli Selection:	Ampicillin (100 ug/mL)



[View online »](#)

ORF Nucleotide Sequence: >MG215623 representing NM_013780
Red=Cloning site Blue=ORF Green=Tags(s)

TTTTGTAATACGACTACTATAGGGCGCCGGGAATTCGTGACTGGATCCGGTACCGAGGAGATCTGCC
GCCGGATCGCC

ATGGGGAGGGCCGGCGCCGGCCAAACGGCACCCCGCAGAACGTCCAGGGCATCACCTCTACCAGCAGC
GAATAACTGCCAGCATCCTCTGCCAACCAATCAGAATGTAGGAAAATCTACAGATATGACGGAATCTA
CTGTGAATCTACCTACCAGAATTTACAAGCACTGAGAAAGGAGAAATCCAGAGATGCTGCTCGATCCCGC
CGGGGAAAAGAAAATTTGAGTTCTATGAATTGGCCAAAGCTGTTGCCTCTTCTGCCGCATCACCAGCC
AGCTCGACAAGGCATCCATCATCCGACTTACAATTAGTTATCTCAAGATGAGAGACTTTGCCAACCAAGG
GGATCCTCCATGGAACCTGAGGATGGAAGGCCCTCCACCAACACCTCAGTAAAAGGTGCACAACGAAAG
CGGAGCCCCAGCGCACTGGCCATTGAAGTATTTGAAGCACATTTGGGAAGCCACATTTTGCAGTCCCTGG
ATGGCTTCGATTTGCACTAAATCAAGAAGGAAAATTTTGTACATTTCTGAAACCGTCTCTATCTACCT
AGGCCCTCACAAGTGGAGCTGACAGGTAGCAGCGTCTTTGACTATGTCCACCCTGGGGACCACGTGGAG
ATGGCAGAGCAGCTGGGCATGAAGCTCCCGCTGGGCGGGTCTCCTCTCGCAGGGCACCACAGAGGACG
CGGCCAGTTCAGCATCTTCTCTTCTCAGTCAGAGACCCTGAGCCAGTGGAGACGACCAGCCCTAGTCT
GCTAACACGGACAACACCTTGAACGGTCTTTTTTCATCCGAATGAAGTCTACTCTGACCAACGTGGA
GTCCACATCAAGTCATCTGGGTATAAGGTGATTACATAACAGGCCGGCTTCGCCTCAGAGTGTCCGTGT
CCCACGGGAGGACCGTCCCAGCCAAATCATGGGTCTGGTGGTTGTGGCTCACGCCTTGCCTCCCCTAC
GATCAATGAAGTCAGAATTGACTGCCATATGTTTCGTCAGTAAACATGGATCTCAATATCATTTAC
TGTGAAAATAGGATTAGTATTACATGGATCTGACCCCTGTAGACATCGTAGGGAAAAGATGCTACCACT
TCATCCATGCCAAGATGTAGAAGGCATCAGGCACAGTCACCTGGACTTGTGAATAAGGGTCAGTGTGT
GACCAAGTACTACCGCTGGATGCAGAAGAATGGAGGCTACATCTGGATACAGTCTAGTGCCACCATAGCT
ATTAATGCGAAGAATGCAAATGAGAAGAATCATCTGGGTGAATATCTTCTTAGTAATCCGGAGTACA
AGGACACACCCATGGACATTGCGCAACTCCCGCATTTGCCAGAGAAAGCGTCAGAATCCTCAGAGACATC
CGACTCTGAGTCAGACTCTAAGACACCTCAGGTATTACAGAGGACAATGAGAACTCCAAGTCCGACGAG
AAGGGCAATCAGTCCGAGAATAGCGAAGATCCGGAGCCTGACCGCAAGAAGTCAGGCAGCGCATGCGACA
ACGACATGAACTGCAACGACGATGGCCACAGCTCCAGCAACCCGGACAGCCGTGACAGCGACGACAGCTT
CGAGCACTCGGACTTTGAACACCCCAAGGCGCCGAGGATGGCTTCCGCGCGCTGGGCCCTATGCAGATC
AAAGTGGAGCGCTACGTGGAGAGCGAGGCGGACCTGCGACTGCAGCCCTCGGAGTCGCTCAGTCGGACA
GCGCCAAGGACTCAGACAGCGCAACGAGGCGGGCGCTCAGGCATCCAGCAAGCACCAGAAGCGCAAGCG
GCGGCGAAAACGGCAGAAGGGCGGCAGCGCCAGTCGCCGACGCTTCCAGCGCGTCCAGCCAGGCGCTG
GACCGCGTCTGGTGGAGCCTCCGCGGTGCTGTCTATCGCCGACAGCGCCTCTGTGCTCAAGATCAAGA
CAGAGATCGCCGAGCCCATCACTTCGACAACGACAGCAGCATCTGGAATACCCGCCCAACCGGGAGAT
CTCCAGGAACGAATCCCGTACAGCATGACCAAGCCCCACCTCCGAGCACTTCCCGTCCCAGCAGGGC
CAGGGAGGCAGCAGCGGTGGCGGGGAGCGCTGCACGTGGCCATCCCCGACTCGGTCTCACCCACCGG
GCGCCGATGGCACAGCTGGCCGAAGACTCAGTTCAGCGGCACAGCCCGGTGCCCTCTGATCCACTGTC
GCCCGCTCTCTGCGTCCCAGCGGACAAGCACCCCGGGGCGGGGCGGGAGTGGCGGGGTGCCCT
GGTGCATCAAACCTCTTGTGTACTGAGGACCTGGAGGCCCTGCAGAGGTTGCAAGCGGGCAACGCTCG
TGCTTCCGCTGGTGACCCGGTGACCCGGACCCTGGCAGCCACCAGCACAGCCGACAGAGGGTCTACAC
CACGGGCACTATCCGCTACGACCCCGTGAAGTGACCTGGCCATGCAGGGCAACCTGCTACCCAACGCG
CATGCTGTTAACTTCGTGGAGCTTAAACAGCCAGGCTTTGGCTCGACCCCAAGACCCATGGAGATGC
TCTACCACCACGTGCACCGACTCAACATGTCAGGACATTTGGCGGCGCGTGAAGCGGCGCAGCCTCAC
ACAGATGCCAGGTGCAACGTGTTACACAGCCGAGGGACTTTCTCCAGCTGCCCTTCCAGTCTAC
AGCAACGGTATCCACGCGGCACAGACTCTGGAGCGCAAGGAGGAC

ACCGTACGCGGCCGCTCGAG - GFP Tag - GTTTAA

Protein Sequence:

>MG215623 representing NM_013780

Red=Cloning site Green=Tags(s)

MGRAGAAANGTPQNVQGITSYQQRITAQHPLPNQSECRKIYRYDGIYCESTYQNLQALRKEKSRDAARSR
 RGKENFEFYELAKLLPLPAAITSQLDKASIIRLTISYLMKMRDFANQGDPPWNLRMEGPPPNTSVKGAQRR
 RSPSALAEVFEAHLGSHILQSLDGFVVALNQEKGFLYISETVSIYGLSQVELTGSSVFDYVHPGDHVE
 MAEQLGMKLLPPGRLLSQGTTEAASSASSSSQSETPEPVETTSPSLLTTDNTLERSFFIRMKSTLTKRG
 VHIKSSGYKVIHITGRRLRVSLSHGRTPVPSQIMGLVVVAHALPPPTINEVRIDCHMFVTRVNMDLNIY
 CENRISDYMDLTPVDIVGKRCYHFIHAEDVEGIRSHLDLLNKGQCVTKYRWMQKNGGYIWIQSSATIA
 INAKNANEKNIWVNYLLSNPEYKDTMPMDIAQLPHLPEKASESETSDSESDSKDTSGITEDNENKSD
 KGNQSENSEDPEDRKKSGSACDNDMNCNDGHSNPNDSRDSDDSEHSDFEHPKAAEDGFGALGPMQI
 KVERYVESEADLRQPCESLTSDSAKDSANEAGAQAASSKHQKRKRKRKRQKGGASRRRLSSASSPL
 DAGLVEPPRLSSPHSASVLIKTEIAEPINFNDSSIWNYPNREISRNESPYSMTKPPTSEHFSPQG
 QGGSSGGGALHVAIPDSVLTPPGADGTAGRKTQFSGTAPVSDPLSPPLSASPRDKHPGGAGSGGGGP
 GASNSLLYTDLEALQRLQAGNVVLPVHRVTGLAATSTAAQRVYTTGTIRYAPAEVTLAMQGNLLPNA
 HAVNFVDVNSPGFGLDPKTPMEMLYHHVHRLNMSGPFGGAVSAASLTQMPGGNVFTTAEGLFSTLFPFVY
 SNGIHAAQTLERKED

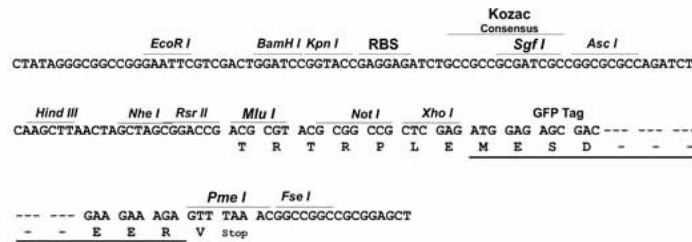
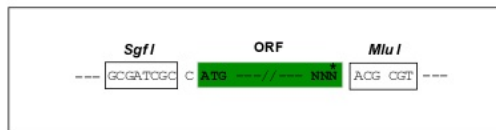
TRTRPLE - GFP Tag - V

Restriction Sites:

SgfI-MluI

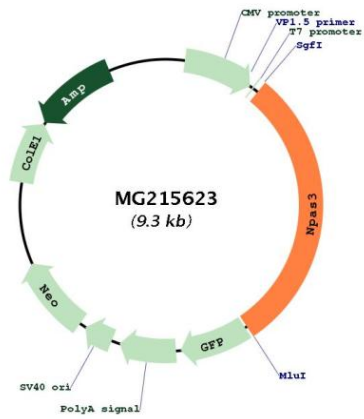
Cloning Scheme:

Cloning sites used for ORF Shuttling:



ACCN:	NM_013780
ORF Size:	2775 bp
OTI Disclaimer:	The molecular sequence of this clone aligns with the gene accession number as a point of reference only. However, individual transcript sequences of the same gene can differ through naturally occurring variations (e.g. polymorphisms), each with its own valid existence. This clone is substantially in agreement with the reference, but a complete review of all prevailing variants is recommended prior to use. More info
OTI Annotation:	This clone was engineered to express the complete ORF with an expression tag. Expression varies depending on the nature of the gene.
Components:	The ORF clone is ion-exchange column purified and shipped in a 2D barcoded Matrix tube containing 10ug of transfection-ready, dried plasmid DNA (reconstitute with 100 ul of water).
Reconstitution Method:	<ol style="list-style-type: none">1. Centrifuge at 5,000xg for 5min.2. Carefully open the tube and add 100ul of sterile water to dissolve the DNA.3. Close the tube and incubate for 10 minutes at room temperature.4. Briefly vortex the tube and then do a quick spin (less than 5000xg) to concentrate the liquid at the bottom.5. Store the suspended plasmid at -20°C. The DNA is stable for at least one year from date of shipping when stored at -20°C.
Note:	Plasmids are not sterile. For experiments where strict sterility is required, filtration with 0.22um filter is required.
RefSeq:	NM_013780.2 , NP_038808.2
RefSeq Size:	5879 bp
RefSeq ORF:	2778 bp
Locus ID:	27386
Cytogenetics:	12 C1

Product images:



Circular map for MG215623