

Product datasheet for **MG215614**

Gcnt7 (NM_001039560) Mouse Tagged ORF Clone

Product data:

Product Type:	Expression Plasmids
Tag:	TurboGFP
Symbol:	Gcnt7
Synonyms:	A330041C17Rik; gnt
Mammalian Cell Selection:	Neomycin
Vector:	pCMV6-AC-GFP (PS100010)
E. coli Selection:	Ampicillin (100 ug/mL)

ORF Nucleotide Sequence: >MG215614 representing NM_001039560
Red=Cloning site Blue=ORF Green=Tags(s)

TTTTGTAATACGACTCACTATAGGGCGCCGGGAATTCGTCGACTGGATCCGGTACCGAGGAGATCTGCC
GCCGCGATCGCC

ATGAGCCAGCTCCGGACCACAAAGGCTGGGCTGGTGGCATGTGGCATGATTGCGCCTTCATCTTTCTTT
ACTTGAGAAACCCAGGTCTGAGGAGGCTGAGGCTGAGGCTGAGGCCACCAACCCAGCTGTGGT
GGAATGTGGCTTCTATCCAGATGAACTGTCTCGGCTTTATTTGACGGGAAAAAGGCAGCCCCCAATC
GCTCAATCTGCAAACCTCCTCAGAACTCTGAAGTTCCTGCTCGCTTGGCAGCAGCTGAAACTGCTCCA
GGCTGGCTCGGGGGCTGCACTTATAACAGACCCCTGTCTGCAGAAGAGGGGAACCTCCTCTGGCCTA
TGTTATACATGCTCCGAGGGAGCTGGTCATGTTTGTGCGGCTTCTCAGAGCGATTTATGCACCTCAGAAT
GTCTACTGTATCCACAGTGATGAAAATGCCCAAAGAAGTTTAAGAGTGCCATGCAAACCTTCGTGGACT
GTTTTGAAACATCTTTCTTTTATCAAAGACACAGAAGGTGGCTCATGACAACCTCAGGAGGCTGCAGGC
AGAGATTGACTGCATGAGGGACCTGGTCCACTCCCATTTCAATGGCACTATGTCATGAATCTGTGGGA
CAGGAATTCCTATCAAAACCAACAAAGAAATCATCTATGACATCAGAACCAGGTGGAAGGGTAAAAACA
TCACGCCTGGGGTGACCCACCCGCAAACCTCAAACCAAGACAGGCCAAGGCCCTCAAAGCCAGTCC
CGATGAAAAAGCTACACAGCTCAAATACAATTTTCAAACAAGCCACCCCAATCTAACAATTTCC
TCTGGAAGTGCTCACTATGCACTTACGAGGAAGTTTGTAGAGTTGCTCCTAACTGATCCCCGTGCAAAAG
ACATGCTGCAGTGGTCCAAAGACATCCAAAGCCCGGAGAAGCACTACTGGGTGACCCTGAACCGACTGAA
AGACGCTCCAGGTGCCACACAGATGCTGGATGGGAAGGACACATTCGGGCCACGAAGTGGAGAACAGAG
GCAGGAGATGGTGCAGGGGTGCACAGACCAGATGCCAAAGACACTTGTGTATGGCCTGGGAGACC
TGCCCTGGGCTCATCCGGCTGCCAGCTTCTTTGCCACGCTGGAGCCCTCCTCAGACCCGCTGGTGGGAGT
ATGCCTAGAGAGGCGGCCACCGACTCAGAGCCCTACAGCAGGCCGAGGTCCCTCCAGAGCCACACTGGCAG
TTTCCCAGCAAAGCCACTTCAACAGTCAACCTCACCAT

ACGCGTACGCGGCCGCTCGAG - GFP Tag - GTTTAA



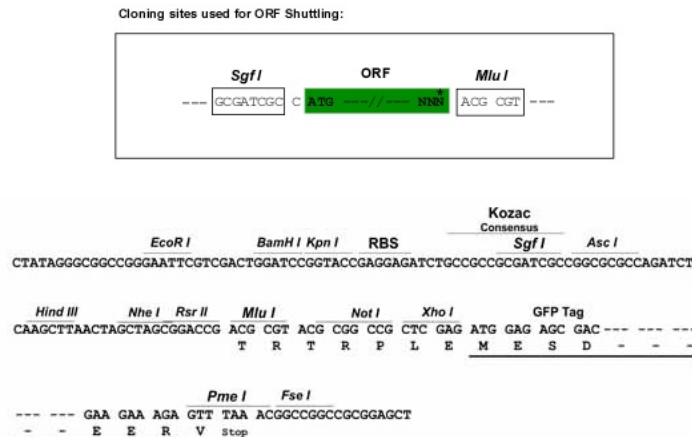
Protein Sequence: >MG215614 representing NM_001039560
Red=Cloning site Green=Tags(s)

```
MSQLRTTKAGLVACGMICAFIFLYLRNPGPEEAEAEAEPTNPVAVVECGFYDELCSALFDGKKAAPQI
AQFCKPPQNSEVPARLRTPGNCSRLARGLHFITRPLSAEEGNFSLAYVIHAPRELVFMFVRLRLRAIYAPQN
VYCIHSDENAPKKFKSAMQTFVDCFGNIFLSSKTQKVAHDNLRRLQAEIDCMRDLVHSPFQWHYVMNLCCG
QEFPIKTNKEIYDIRTRWKGKNITPGVTPPANSKPKTGQPPKPSPDENSYTAPNTIFKQSPPHNLTIS
SGSAHYALTRKFVEFVLTDPRAKMLQWSKDIQSPEKHYWTLNRLKDAPGATPDAGWEGHIRATKWRT
AGDGRKGCTDHAQDTCVYGLGDLPLIRLPAFFATLEPSSDPLVGVCLERRHRLRALQQAIEVPPPEHW
FPQQSHFNFSQPHH
```

TRTRPLE - GFP Tag - V

Restriction Sites: SgfI-MluI

Cloning Scheme:



ACCN: NM_001039560

ORF Size: 1299 bp

OTI Disclaimer: The molecular sequence of this clone aligns with the gene accession number as a point of reference only. However, individual transcript sequences of the same gene can differ through naturally occurring variations (e.g. polymorphisms), each with its own valid existence. This clone is substantially in agreement with the reference, but a complete review of all prevailing variants is recommended prior to use. [More info](#)

OTI Annotation: This clone was engineered to express the complete ORF with an expression tag. Expression varies depending on the nature of the gene.

Components: The ORF clone is ion-exchange column purified and shipped in a 2D barcoded Matrix tube containing 10ug of transfection-ready, dried plasmid DNA (reconstitute with 100 ul of water).

Reconstitution Method:

1. Centrifuge at 5,000xg for 5min.
2. Carefully open the tube and add 100ul of sterile water to dissolve the DNA.
3. Close the tube and incubate for 10 minutes at room temperature.
4. Briefly vortex the tube and then do a quick spin (less than 5000xg) to concentrate the liquid at the bottom.
5. Store the suspended plasmid at -20°C. The DNA is stable for at least one year from date of shipping when stored at -20°C.

Note: Plasmids are not sterile. For experiments where strict sterility is required, filtration with 0.22um filter is required.

RefSeq: [NM_001039560.3](#), [NP_001034649.1](#)

RefSeq Size: 2220 bp

RefSeq ORF: 1302 bp

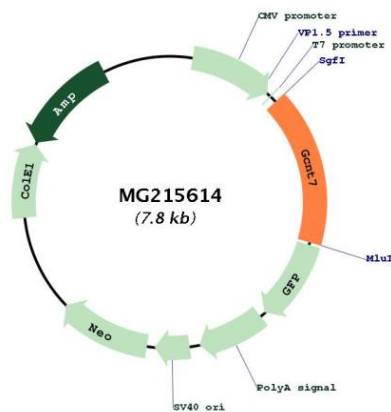
Locus ID: 654821

UniProt ID: [Q3V3K7](#)

Cytogenetics: 2 H3

Gene Summary: Glycosyltransferase.[UniProtKB/Swiss-Prot Function]

Product images:



Circular map for MG215614