

Product datasheet for **MG215598**

Zfp217 (NM_001033299) Mouse Tagged ORF Clone

Product data:

Product Type:	Expression Plasmids
Tag:	TurboGFP
Symbol:	Zfp217
Synonyms:	4933431C08Rik; AW987152; Gm562; ZABC1; Znf217
Mammalian Cell Selection:	Neomycin
Vector:	pCMV6-AC-GFP (PS100010)
E. coli Selection:	Ampicillin (100 ug/mL)



ORF Nucleotide Sequence: >MG215598 representing NM_001033299
Red=Cloning site Blue=ORF Green=Tags(s)

TTTTGTAATACGACTCACTATAGGGCGCCGGGAATTCGTGCGACTGGATCCGGTACCGAGGAGATCTGCC
GCCGCGATCGCC

ATGCCGACCCAGTCCCTCCTCGTGTACATGGACGGCCGGGAAGTCTCAGCAGCTCTCTAGGCTCCCAGA
TGGAGGTGGATGATGCTGTGCCATAAAAAGGGCCGGTGGCAGTCCCCTTCGAGCTGCTCAGGAGAAGAG
CATGGCCGTGGCAGAGGGCCACATGCCCTTGGATTGCATGTTCTGCAGCCAGGTCTTCTCTCAGGCGGAG
GATCTCAGTCAGCACGTGCTGCTGCAGCACGGCCACCCTCTGCGAGCCAGCTGTCTCGCTGTGGAGG
CCGAGTACCTAAGTCCCCTTGATAAAGCTCTGGAGCCAACAGAGCCAGCATTGGAGAAGAGTGGCGAAGA
CCCCGAGGAGTTGAGCTGTGATGTGTGGGCAGACATCCCAAGTGGCTTTTGTGTTGAGAGCCACATG
AAGAAGCATAAGGACTCCTTCACGTATGGGTGCAGCATGTGCGGGAGGAGATTCAAGGAGCCGTGGTTCC
TGAAGAACCACATGCGGACACACAATGGCAAGTCTGGCACCAGGAGCAAGCTTCAGCAAGGCATGGAGAG
TCCAGTCACCATCAATGAAGTGGTCCAGCCGACGCCCCTGGGAGCATCTCCACGCCCTACAAGATCTGC
ATGGTCTGCGGCTTCTCTTCCAAAATAAGCAGAGCCTCATTGAGCACAGCAAGGTTACGCCAAAAGAAA
CTGTCCCCAGTGCCAGCAACGTTGCCCTGATGACCACCGAGAGGAACCCACGTCGCCGAGGGAAGAGTT
GCTGCAAGTTTTGAACTTGAGACCCAGATCAACTGCAGGTAGTACAGTGAAGCCATGACCTGCATACCT
CAGCTTGACCCGTTACCACCTACCAGGCATGGCAGTTGGCTACCAAGGAAAAGTGGCCGTTGCCCAGG
AAGAGGTGAAAGAGTCAGGCCAAGAAGGAAGCACAGACAATGACGACTCATGCTCAGAGAAAAGAGGAACT
AGGGGAAAATATGGGTTGGGGTAAGGCGGAAGGGTCTGAAAAGTCCAAAACAAGTAAAAGCAGTTGTCCA
GGTCTCTCCAAGACAAAAGAGAAGCCTAGACATGCTAATAGTGAAGTGCCTTCTGGGATAGTGACCCCA
AGTTGTCCAGTAGCAAGGAGAAGCCACGCACTGTTCTGAGTGCAGCAAAGCCTTCAGGACATACCACCA
GCTCGTCTGCACTCGAGGGTGCACAGGAAGGACAGGAGGACTGATGCCCTGTCAACCACCATGGCTGTG
GATGCAAGGACGCTGGGACCTGCTCCCCAGACCTCAGCACCACCTCTGGAAGACAGTGGGGCCGGGGACC
GAGAAGGGGCTCTGAAGACGGGTCTGAGGATGGACTCCCTGACGGGCTCCATTTGGATAAAAATGATGA
TGGAGGAAAAGCGAAGCCCTCCGTCCTCGAGAGAGTGTAGTTACTGTGGCAAGTTTTCCGTTCAAAC
TATTACCTCAATATTCATCTCAGAACGCATACAGGTGAAAAACCATACAATGTGAATTCTGTGAGTATG
CCGACAGCCAGAAGACATCTCTGAGGTACCACTTGGAGAGACATCAAAAGACAAGCAGCCGGTGGATGC
TGCCGCTGAGTCCAAAAGTGAAGGCCGGAGCCAGGAGCCGAGGATGCGCTACTAACGGCTGCTGACAGT
GCGCAGACCAAAAATTTAAGAGATTTCTTGTGTTGCCAAAGATGTTAAGGGAAGCCACCTGCCAAGC
AGCTTAAGGAGATGCCTTCTGTCTTCCAGAGTGTCTCTCACCAGCACACAGCAACGATACTCAGGATTT
CCATAAACATGCAGCTGATAGTGTGAGAAAAGCGAGGAAGAGCCCTGCCCTACTTATCTGGACATGCAG
AGAAAAGAAAGCAGGGGAGCCTCAGGCCAGCAGCCCTGTCTGCAGACTAGAGGGGTTGGGTCTTAGCAC
GGGAAGCTGGCCATAGGGAGAAGATGGATCAGGATGCTGACTACAGACATAAGCCCGGTGCTGACTGCCA
GGACAGGCCTTTGAATCTATCCCTTGGGCCGCTCCACGCTGTCTGCAATCTCTTTGAGCAAGTGTCTG
ATCCCCAGCATTGCTGCCCTTTTGTACTTTCAAGACCTTTTATCCGGAAGTCTTATGATGCACCAGA
GACTTGAGCACAGGTACAACCTGACCCGCACAAGAAGGCAGCAGCAAGTCTGTGCTGAGGAACAGGCG
TACCGGTGCCCTCCGCTTTGCTGGGAAAAGATGTCCTCCCTTGTCTGGCTGCACAAGCCCAAGGCC
AAGACTGCCTTCTCACCACACTCGAAGTCCCTGCACTCAGAGAAGGCTCGCGAGGGGGCCTCGGGCCAA
GCAAAGCACCCAGACTTCAGGACCAGACAACAGCACTTTAGCCCCAAGTAACTGAAGTACACAGGTC
ACAACCCAATGCTGGGGCACCAGTGCCACCAGGCAGCAGCAGTCAAGTGTGTTCCCAAAGGTGGCGTC
CCTGCTGCTATGGATAAGGTGAAGAGACCTGAGCCAAAAGTGAAGTCCCTACCAGCTCCCGCTCAGT
CCCCCTCAGCAGTAATAATAGCAACGGTCTGTTGAGTATCCCGTGAAGGTTGACGGCCCATGGGCACA
GCAAGGGAGAGACTACTACTGCCATCGGAATTCTGGCAGTGCAGCAGCAGTACAGTGAGCCACATCCC
AAAAGACTCAAGTCCAGTGGGTGTCCCTGGACACAGAGCATGCAGGGACCAATGGCAGAAGGGGCTTTG
AGCTCCCCAAGTACCATGTGGTCAGGAGCATCACCTCCTTGTACCACCAGAGTGTGTGCGCCACCGCC
TGTGCTGCCCCACAAAGCCGTTTCTGAGCCCTGGGGAGGTGGAGTACCCAGTGTGTTGGCTGTGCGAG
AAGCCCTACAGTGCTCTGGACCCCTGTATACCTGTGGACCCGTGGGACACGCAGGAGGCAGCCAGCCC
TTGAAGGAAAAGAGGCTGTGTACATCAGCACCTATCTAACAGCATGCTGCAGAAGAGAAGTATGAGAA
TTTTATTGAAAATACACATTACCGACCAATGACAAAAACCT

ACGCGTACGCGGCCGCTCGAG - GFP Tag - GTTTAA

Protein Sequence:

>MG215598 representing NM_001033299
 Red=Cloning site Green=Tags(s)

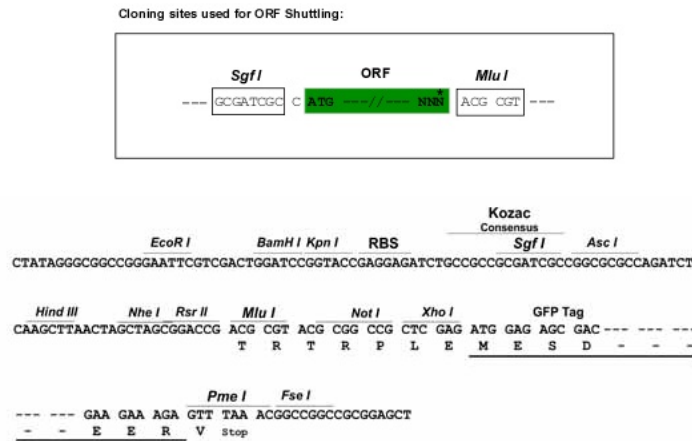
MPTQSLLVYMDGPEVLSSSLGSQMEVDDAVPIKGPVAVPFRAAQEKSMVAEAGHMP LDCMFCSQVFSQAE
 DLSQHVLLQHRPTLCEPAVLRVEAEYLSPLDKALEPTEPALEKSGEDPEELSCDVCGQTFPVAFDVESHM
 KKHKDSFTYGCSCMGRRFKEPWF LKNHMRTHNGKSGTRSKLQQGMESPVTINEVVQPHAPGSI STPYKIC
 MVCGFLFPNKQSLIEHSKVHAKETVPSASNVAPDDHREPTSPREELLQFLNLRPRSTAGSTVKPMTICIP
 QLDPFTTYQAWQLATKGVAVAAQEEVKESGQEGSTDNDSCSEKEELGEI WVGGAEGSGKSKTSKSSCP
 GLSQDKEKPRHANSEVPSGSDPKLSSSKEKPTHCSCESKAFRTYHQLVLSRVRHRKDRRTDALSP TMAV
 DARQPGTCSPDLSTTLED SGAGDREGGSEDGSDGLPDGLHLDKNDGGKAKPLPSSRECSYCGKFFRSN
 YYLNIHLRHTHTGEKPYKCEFC EYAAAQKTS LRYHLERHHKDKQPVDAAAE SKSEGRSQEPQDALLTAADS
 AQTKNLKRFLDGAKDVKGSPPAKQLKEMPSVFQSVLSPAHSNDTQDFHKHAADS AEKARKSPAPTYLDMQ
 RKKAGEPQASSPVCRLEGVGSLAREAGHREKMDQADYRHKPGADCQDRPLNLSGLPHACPAISLSKCL
 IPSIACPFCTFKTFYPEV LMMHQRL EHRYPDPHKNGSSKSVLRNRRTGCPALLGKDV PPLSGLHKKPA
 KTA FSPHKS LSHSEKARQ GASGPSKAPQ TSGPDNSTLAPS NLKSHRSQPNAGGTSATRQQQSELFPKGGV
 PAAMDKVKRPEPKL KSLPASPSQSPLSSNNSNGSVEYPVKVDGPWAQQGRDY YCHNRSGSAAA EYSEPH
 KRLKSSAVSLDTEHAGTNGRRGFELPKYHVYRSITSLLPPECVRPPPVLPHKARFLSPGEVESPSVLA VQ
 KPYSASGPLYTCGPVGHAGGSPALEGKRPVSHQHLNSMLQKRSYENFIGNTHYRPNDKKP

TRTRPLE - GFP Tag - V

Restriction Sites:

SgfI-MluI

Cloning Scheme:



ACCN:

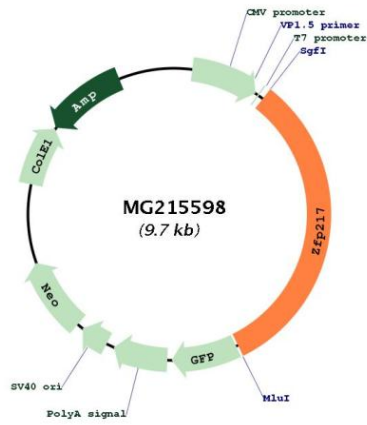
NM_001033299

ORF Size:

3123 bp

OTI Disclaimer:	The molecular sequence of this clone aligns with the gene accession number as a point of reference only. However, individual transcript sequences of the same gene can differ through naturally occurring variations (e.g. polymorphisms), each with its own valid existence. This clone is substantially in agreement with the reference, but a complete review of all prevailing variants is recommended prior to use. More info
OTI Annotation:	This clone was engineered to express the complete ORF with an expression tag. Expression varies depending on the nature of the gene.
Components:	The ORF clone is ion-exchange column purified and shipped in a 2D barcoded Matrix tube containing 10ug of transfection-ready, dried plasmid DNA (reconstitute with 100 ul of water).
Reconstitution Method:	<ol style="list-style-type: none">1. Centrifuge at 5,000xg for 5min.2. Carefully open the tube and add 100ul of sterile water to dissolve the DNA.3. Close the tube and incubate for 10 minutes at room temperature.4. Briefly vortex the tube and then do a quick spin (less than 5000xg) to concentrate the liquid at the bottom.5. Store the suspended plasmid at -20°C. The DNA is stable for at least one year from date of shipping when stored at -20°C.
Note:	Plasmids are not sterile. For experiments where strict sterility is required, filtration with 0.22um filter is required.
RefSeq:	NM_001033299.3 , NP_001028471.1
RefSeq Size:	5685 bp
RefSeq ORF:	3126 bp
Locus ID:	228913
Cytogenetics:	2 89.91 cM

Product images:



Circular map for MG215598