

Product datasheet for **MG215597**

Tle2 (NM_019725) Mouse Tagged ORF Clone

Product data:

Product Type:	Expression Plasmids
Product Name:	Tle2 (NM_019725) Mouse Tagged ORF Clone
Tag:	TurboGFP
Symbol:	Tle2
Synonyms:	Grg2; mKIAA4188
Mammalian Cell Selection:	Neomycin
Vector:	pCMV6-AC-GFP (PS100010)
E. coli Selection:	Ampicillin (100 ug/mL)



[View online »](#)

ORF Nucleotide
Sequence:

>MG215597 representing NM_019725
 Red=Cloning site Blue=ORF Green=Tags(s)

TTTTGTAATACGACTCACTATAGGGCGGCCGGAATTCGTCGACTGGATCCGGTACCGAGGAGATCTGCC
 GCCCGCATCGCC

ATGTACCCTCAGGGAAGGCACCCGACCCGCTGCAGTCTGGCCAGCCTTTCAAGTTCTCAGTACTGGAAA
 TCTGTGACCGGATCAAAGAGGAATTCCAGTTTCTCAAGCTCAGTACCACAGCCTCAAGCTAGAATGTGA
 GAAGCTGGCCAGCGAGAAGACAGAAATGCAAAAGCATTATGTGATGGCTGCACCCATCAGTGTCCCCAG
 GGTGGCACCAGCTATCCACACTGGCCAAGACTGTCTCCTTTGCAGTACTACGAGATGTCCTACGGACTCA
 ACATTGAGATGCATAAACAGGCTGAGATTGTGAAACGCCTCAGTGCATCTGTGCCAGATGGTCCCCTT
 CCTCACTCAGGAGCATCAGCAGCAGGTGCTCCAGGCTGTGGACCGAGCCAAGCAGGTGACCGTGGGGAA
 CTGAACAGCCTCCTGGGGCAGCAGAATCAGCTCCAGCCGCTGTCCACGCACCCCCCGTGCCTCTCACCC
 CGCGCCACGCGGCTGGTGGGTGCCGGGGCCACTGGGCTGTGGCCCTATCTGGGGCACTGGCTGCGCA
 GGCCAGCTGGTGGCTGCCGTAAGGAAGACCGTGTGGTGTGGACGCCGAGGGTCCAGAGTGGACAGA
 GCTGCCAGCAGGATTCTTCCCCGTCTCCCCCTGAGAGTCTGGTGAAGAGGACCATCCCAGCAGCCGAG
 GCGGCAGTGGGAAACAGCAGAGAGCTGAAGACAAGGATCTGTGAGGGCCTTATGACAGTGAGGAAGACAA
 GAGTGACTATAACCTGGTAGTGGATGAGGACCAACCGTCAGAGCCCCCAGCCCTGTGACCACCCCTTGT
 GGGAGGCGCCCTCTGCATTCTGCCCGCAGGGACCTCACAGACAGTCCAGCCTCCTTGGCCTCCAGTT
 TGGGCTCACCACTCCCCAGAAGCAAAGACATAGCCCTGAACGATCTTCCACAGGCACTCCTGCCTCCAG
 GTCATGTGGTACCTCTCCACCCAGGACTCGTCCACCCGGGGCCAGCTCAGCCAGTCACTCTGCCAG
 CTGGCGGCTCAGCCGGCAGCACCCACAGACAGCATCGCCCTGAGGAGTCCCCTGACCTTGTCCAGCCCTT
 TCACCTACCTTCAGCCTGGGCTCCCACAGACCCTCAATGGGGACCTCTCCATGCCTGGCTCCTATGT
 CGGCCTCCACCTGTCCCCCAGGTCAGCAGCTCTGTCTGTATGGACGCTCACCTCTGCAGATGGCATT
 GAATCGCACCCCATCTCCGAGGCTCGTCTGTCTCCTTGCCTGGCATCCCTGTGGCTAAGCCGGCTTACT
 CCTTCCAGTGTCTGCGGATGGCCAGATGCAGCCTGTGCCCTTCCCGTCTGATGCTCTGGTAGGCACAGG
 CATCCCTCGCCACGCAAGGCAGCTACACACGCTGGCCACGGTGAAGGTGTGGGACGTGGGCCAGCCGGTA
 AGCTCCACACAGCAGTGTACACAGGGCAAAGGATGCGTGAAGGTGTGGGACGTGGGCCAGCCGGTA
 GCAAGACCCCTGTGGCACAGCTGGATTGCCTGAACCGAGACAACATACCGCTCCTGCAAGCTGCTGCC
 CGACGGGCAGAGCCTGATTGTAGGTGGCAGGCCAGTACCCTGTCCATTTGGGACCTGGCAGCACCACA
 CCACGGATCAAAGCAGAGCTGACTTCGTCTGCCCGGCTGCTATGCTCTGGCCGTGAGTCCGGACGCCA
 AGGTCTGCTTCTCCTGCTGCAGCGACGGTAACATCGTGGTCTGGGACCTGCAGAACCAGGCCATGGTCAG
 ACAGTTCAGGGCCACACGGACGGGGCCAGCTGCATCGACATATCAGACTACGGGACCCGGCTGTGGACT
 GGGGGCCTGGACAACACTGTGCGCTGTGGGACCTGCGCGAGGGCCGCCAGCTTCAGCAGCATGACTTCA
 GTTCCCAGATTTTCTCATTGGGCCACTGTCCCAATCAGGACTGGTTGGCTGTGGGGATGGAGAGCAGCCA
 CGTGGAGGTCTGCATGTGCGCAAGCCTGAGAAGTACCAGCTCCGCTCCATGAGAGCTGCGTGTGTCA
 CTCAAGTTCGCTTCTGTGGACGCTGGTTTGTGAGCACAGGCAAGGACAACCTGCTCAATGCCTGGAGGA
 CACCCTATGGGGCCAGCATTTTTTCAGTCCAAGAATCATCTTCTGTACTGAGCTGCGACATCTCCAGGAA
 TAATAAGTACATCGTGACAGGCTCAGGGGACAAGAAGGCCACTGTGTATGAGGTGGTGTAC

ACGCGTACGCGGCCGCTCGAG – GFP Tag – GTTTAA

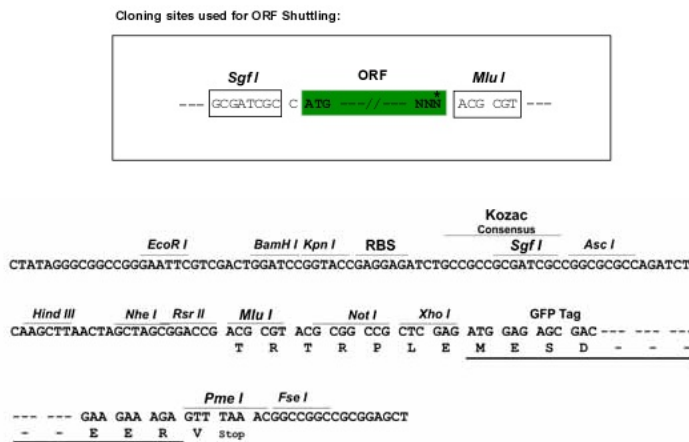
Protein Sequence: >MG215597 representing NM_019725
 Red=Cloning site Green=Tags(s)

MYPQGRHPTPLQSGQPFKFSVLEICDRIKEEFQFLQAQYHSLKLECEKLA SEKTEMQRHYVMAAPHQCPO
 GGTSYPHWPRLSPLQYYEMSYGLNIEMHKQAEIVKRLSAICAQMPVFLTQEHQQQVLQAVDRAKQVTVGE
 LNSLLGQQNLQPLSHAPPVPLTPRPAGLVGAGATGLLALSGALAAQAQLVAAVKEDRVGVDAEGSRVDR
 AASRSSSPPELVEEDHPSSRGGSGKQRAEDKDLSGPYDSEEDKSDYNLVDEDEQPSEPPSPVTTTC
 GKAPLCIPARRDLTSPASLASSLGSPLPRSKDIALNDLPTGTPASRSCGTSPQDSSTPGPSSASHLCQ
 LAAQPAAPTDSIALRSPLTLSSPFTSSFSLGSHSTLNGDLSMPGSYVGLHLSPQVSSSVYGRSPLQMAF
 ESHPHLRGSSVSLPGIPVAKPAYSFHVSADGQMOPVFPFSDALVGTGIPRHRQLHTLAHGEVVCVAVTIS
 SSTQHVVYTGKGCVKVWDVVGQPGSKTPVAQLDCLNRDNYIRSKLLPDGQSLIVGGEASTLSIWDLAAPT
 PRIKAELTSSAPACYALAVSPDAKVCFSCCSDGNI VVWDLQNQAMVRQFQGHTDGASCIDISDYGTRLWT
 GGLDNTVRCWDLREGRQLQOHDFSSQIFSLGHCPNQDWLAVGMESSHVEVLHVRKPEKYQLRLHESCVL S
 LKFASCGRWFVSTGKDNLLNAWRTPYGASIFQSKESSSVLSCDISRNKYIVTGS GDKKATVYEVVY

TRTRPLE - GFP Tag - V

Restriction Sites: SgfI-MluI

Cloning Scheme:



ACCN: NM_019725

ORF Size: 2301 bp

OTI Disclaimer: The molecular sequence of this clone aligns with the gene accession number as a point of reference only. However, individual transcript sequences of the same gene can differ through naturally occurring variations (e.g. polymorphisms), each with its own valid existence. This clone is substantially in agreement with the reference, but a complete review of all prevailing variants is recommended prior to use. [More info](#)

OTI Annotation: This clone was engineered to express the complete ORF with an expression tag. Expression varies depending on the nature of the gene.

Components: The ORF clone is ion-exchange column purified and shipped in a 2D barcoded Matrix tube containing 10ug of transfection-ready, dried plasmid DNA (reconstitute with 100 ul of water).

Reconstitution Method:

1. Centrifuge at 5,000xg for 5min.
2. Carefully open the tube and add 100ul of sterile water to dissolve the DNA.
3. Close the tube and incubate for 10 minutes at room temperature.
4. Briefly vortex the tube and then do a quick spin (less than 5000xg) to concentrate the liquid at the bottom.
5. Store the suspended plasmid at -20°C. The DNA is stable for at least one year from date of shipping when stored at -20°C.

RefSeq: [NM_019725.2](#), [NP_062699.1](#)

RefSeq Size: 2749 bp

RefSeq ORF: 2304 bp

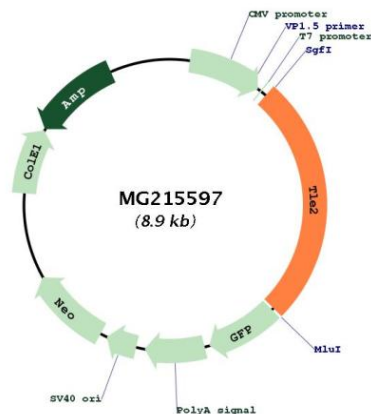
Locus ID: 21886

UniProt ID: [Q9WVB2](#)

Cytogenetics: 10 C1

Gene Summary: Transcriptional corepressor that binds to a number of transcription factors. Inhibits the transcriptional activation mediated by CTNNB1 and TCF family members in Wnt signaling. The effects of full-length TLE family members may be modulated by association with dominant-negative AES (By similarity).[UniProtKB/Swiss-Prot Function]

Product images:



Circular map for MG215597