

Product datasheet for MG215517

Ankhd1 (NM_175375) Mouse Tagged ORF Clone

Product data:

Product Type: Expression Plasmids
Tag: TurboGFP
Symbol: Ankhd1
Synonyms: 1110004O12Rik; 4933432B13Rik; 9130019P20Rik; A530027J04Rik; A630021B20Rik; AA571404
Mammalian Cell Selection: Neomycin
Vector: pCMV6-AC-GFP (PS100010)
E. coli Selection: Ampicillin (100 ug/mL)

ORF Nucleotide Sequence: >MG215517 representing NM_175375
 Red=Cloning site Blue=ORF Green=Tags(s)

TTTTGTAATACGACTCACTATAGGGCGGCCGGAATTCGTGACTGGATCCGGTACCGAGGAGATCTGCC
 GCCGCGATCGCC

ATGCTGACGGACAGCGGGGGCGGCCACCTCCTTTGAGGAGGATTTGGACTCCGTAGCTCCGCGATCCG
 CCCCAGCTGGGGCCTCGGAGCCGCCTCCGCCGGGAGGGGTCGGGCTGGGAATCCGCACCGTGAAGCTCTT
 TGGGGAGGCTGGGCCCGCCGGGAGTCGGTGGCGCGCGGGCGGGCGGGCGGCAGCAGCAGCAGCAGC
 AGCCGGGGCGGAGGGGACGACGCGCTGGATTTCAAGTTGGCCGCTGCTGTGCTGAGGACGGCGGGGAG
 GTGGTGCCTCTGGGAGCGACGAGGACGAGGTGCCGAGGTAGAATCATTTATTTGGACCAAGAAGATT
 GGATAACCCAGTCTTAAAACATCAGAGATATTCTTATCAAGTACAGCAGAAGGAGCAGATTTGCGCACA
 GTGGATCCAGAGACCCAAGCGAGACTGGAAGCATTGCTAGAAGCAGCAGGAATTGGCAAATGTCAACTG
 CTGATGGTAAAGCTTTTGCAGATCCTGAAGTACTCCGGAGACTGACATCCTCAGTTAGCTGTCCCTGGA
 TGAAGCCGCTGCTGCACTGACACGGATGAGAGCAGAGAACACACACAGTACAGGACAAGTGGATACTCGC
 AGTCTGGCAGAAGCTTGTTCAGATGGAGATGTGAATGCTGTTCTGTAATACTAGTGAAGGCAGAAAGT
 TAAATGAACATACAGAAGAAGGAGAAAGCCTGCTGTGTTTGGCTTGTTCAGCAGGATATTGAAGTACG
 ACAAGTACTACTAGCTATGCATGCTAATGTTGAAGATAGAGGGAATAAAGGAGATATAACTCCTTTGATG
 GCAGCTTCTAGTGGAGTTATTTAGATATTGTGAAATTATTACTTCTCATGATGAGATGTCACACTCCC
 AGTCGGCAACAGGGAACACTGCACTGACTTATGCTTGTGCTGGAGGATTTATTGACATTGTAAGTGTCT
 TCTTAATGAGGGTGCGAATATAGAAGACCATAATGAAAATGGACACACTCCCCTAATGGAAGCAGCCAGT
 GCCGGTCATGTAGAAGTGGCCAGATTTCTTCTAGATCACGGTGCAGGCATCAACACTCATTCTAATGAGT
 TTAAAGAAAGTGTCTGCACTTGCCTGCTACAAAGGCCATTTGGATATGGTTCGATTTTCTGTTGAAAGC
 TGGTGCAGATCAAGAGCACAAAACCGATGAGATGCACACTGCCTTAATGGAAGCTTGCATGGATGGACAT
 GTAGAGGTGGCAGCTTTGCTTTTAGACAGTGGTGTCTCAGGTGAATATGCCTGCGGATTCCTTTGAGTCTC
 CATTGACTAGCTGCCTGTGGTGGACATGTTGAATTAGCAGCACTGCTTATTGAAAGAGGAGCAAACTCT
 TGAAGAAGTTAATGACGAAGGATACACGCCTTTGATGGAAGCTGCTCGAGAAGGACATGAAGAGATGGTG
 GCACTTCTATTGGCACAAGGTGCAAAATATAAATGCCAGACAGAAGAACTCAAGAAACTGCTCTTACCT



TGGCTTGCTGTGGAGGCTTTTCTGAAGTTGCAGATTTCTTGATTAAGGCAGGGGCTGACATAGAAGCTTGG
CTGTTCTACACCTCTCATGGAGGCTTCTCAGGAGGGACACCTGGAGTTGGTTAAATATTTGTTGGCTGCT
GGTGCTAATGTGCATGCTACACAGCTACAGGAGACACAGCTTAACCTATGCTTGAAAAATGGACATA
CAGATGTTGCAGATGTTCTACTTCAAGCAGGGGCCATTTAGAACATGAATCTGAAGGTGGAAGAACACC
TTTGATGAAAAGCTGCAAGAGCGGGTCAATTTGTGCACTGTTCAAGTTCTTATTAGCAAAGGTGCCAATGTG
AATAGGGCTACAGCCAATAATGATCACACAGTAGTGTCACTGGCATGTGCAGGAGGCCATTTGGCAGTGG
TTGAACTGCTCTGGCTCATGGAGCTGACCCTACTCATGACTCAAGGATGGATCAACAATGCTTATTGA
AGCTGCAAAAAGGTGGCCATACTAATGTTGTTTCTTATCTGTTGGATTATCCAAATAATGTTCTGTGAGTT
CCCACCACAGATGTATCTCAACTTACCTCTCCGTCACAAGATGAGTCTCAGGTTCCACGAGTACCCATAC
ACACACTTGGCATGGTGTGCCTCCCAGGAACCTGACAGAAGTCCCAGGAGACATCTACTGCCCTTTT
AGGAGTACAAAAAGGTGCATCCAAGCAGAAGTCCAGTTCTCTGCAGGTAGCAGATCAGGACCTACTGCCA
CCTTTTACCCCATACCAGCCTTTGGAGTGCATAGTAGAAGAGACTGAAGGCAAGCTGAATGAACTGGGGC
AAAGAATTAGTGCTATTGAAAAAGCACAGCTTAAGTCAATTGGAGTTAATCAAGGTGAGCCTCTAAACAA
GGATAAGATAGAAGAACTTAAAAAGAACAGAGAAGAGCAAGTCCAGAAGAAGAAGAAATACTGAAAGAA
CTACAGAAGGTGGAAGGCAGTTACAGATGAAAACACAGCAGCAATTTACCAAAGAACTACTGGAACAA
AAGGTGAGAGACACAGAGTCTCCACACCAGCAATGTTCTAATAGAGGAGTCTTCATGGCAGGGGAAGA
AGATGGCAGTCTCCACAGGATCACTCTTCAGAATCACCCAGCTTGATACAGTCTTATTTAAGGATCAT
GATATTGATGATAAGCAACAGTCTCCACCATCGGCAGAACAAATGACTTTGTCCCAGTCCAGCCTCTAT
CATCTCCACAATGTAACTTTTTCAGTGACTTAGGTTCTAATGGGACAAATCTCTTGCTTTCAGAAAGT
ATCAGGTAACCAGCAGATTGTAGGACAGCCTCAGATTGCGATTGCTGGACATGAGCAGGGGCTATTAGTT
CAAGAGCCAGATGGACTCATGGTTGCAACTCCAGCCAGACGCTTACCAGACTCTTGATGACCTGATAG
CAGCTGTGAGTACCAGAGTGCCTGTTGGTTCAAACAATCCCTCTCAGACCACAGAATGCTCTACACCTGA
ATCCTGTTATCAGACTCCAAGCAATATGGCTACCCCATCCACTCCACCTGTGTATCCTTCGGTTGACATT
GATGCACATACGGAAAGCAATCATGACACAGCTTTAACAAGTGGCCTGTGCAGGTGGTATGAAGAAGTCCG
TATCTGTTCTCATTGCTCGGGATGCTAAAATTGAGCATAGAGACAAAAAGGTTTTACCCCACTGATCCT
GGCGGCAACAGCAGGGCATGTTGGAGTTGTTGAAATCCTTTGGATAAAGGTGGAGATATAGAGGCACAA
TCTGAACGAACTAAAGATACTCCATTTCTTTGGCATGTTCTGGTGGACGGCAGGAGGTGGTAGATTTGC
TGCTGGCCCGAGGAGCCAATAAAGAACATAGGAATGTGTCTGATTATACACCAGTCTGCTGGCTGCATC
TGGAGGATACGTGAATATTATTAAGATTTACTTAATGCTGGGGCAGAAATTAATCAAGGACTGGAAGT
AAACTAGGTATTTCTCCATTGATGTTGGCTGCAATGAATGGACATGTTCCCGCAGTGAATTTGCTGCTTG
ATATGGTTTACAGACTAATGCTCAGATAGAGACCAACCGAACACAGCTCTCACCTGGCCTGTTTCCA
GGGTCGAGCAGAAGTAGTGAGTTTGGTTTTGGACCGCAAGGCAATGTTGAACACAGGGCAAGACTGGT
CTTACACCCTTGATGGAAGCAGCTTCTGGAGGATATGCAGAGGTTGGAAGAGTTCTCCTTGATAAAGGAG
CAGATGTCATGCACCTCCTGTGCCTTCTCAAGAGACTGCTTAAACCATAGCAGCAGACAAAGGCCA
CTACAAATCTGTGAGCTCCTGATTAACAGGGGAGCACATATTGATGTTGTAACAAGAAGGGAATAACA
CCACTTTGGCTGGCATCCAATTTGATGATGATGATGATGATGATGATGATGATGATGATGATGATGATGAT
TGGATGAGCAGACAACCGAAAAATCACACCTTATGTGAGCATTTCGCAAGGGTCAATGAAAAAGTTGT
TCAGTATTTGGTGAAGGAAGTCACTCAGTTTCCATCTGATATAGAATGCATGAGATACATAGCAACAATT
ACAGATAAGGAAGTGTGAAGAAGTGTACCAATGTGTTGAGACAATTGTGAAGGCTAAAGATCAGCAGG
CTGCAGAAGCAATAAAAAATGCAAGCATTCTCTAAAAGAGCTGGATCTAGAAAAGTCAAGAGAAGAGAG
CAGAAAAGCAAGCTTGTGCTGCTAAAAGAGAGAAGCGAAAAAGAAAAGAGGAAAAAGAAAAAGAGGAACAG
AAAAGGAAACAGGAAGTGAAGGAGAACAACCTAAGGAGAATTGAGAACAACAGAGGGTGAAGATGAAG
AGAATGATGAAGATGTGGAGCAAGAAATTTCCATAGAGCCTCCGAGTGAACCAACCACTACTACAATTGG
AATCTCTGCTACATCTACCACGTTTACAAATGATTTGGCAAAAAAGAGCCAATGTAGTGACAACCCCC
AGCACCAATCGAAAAATAAAGAAGAAATAGACAAAAGAGTCCCTCCACAGCGCATTAAATTTTACCTG
AGCCACATATATCTTTAGCACAAACAAAAGCAGATAAAAAATAAAATAAATGGAGAGCCTAGAGGTGGCGG
CGCAGGTGGAATAGTGACTCGGATAACATAGATAGCACAGACTGCAACAGTGAAGAGCAGCAGTGGTGGG
AAGAGCCAAGAGTTCAGTTCCCTGTGGATGTGAATCCCGCAGTGAACAAGAGGTGCTCCACAGTTGTCA
GTTCTCAAGAGGAAAAGGCAGTTACCACCACTTCCAAGACTCAGACACGCTTGATGGTGAAGTAAATTC
CATGTCAACAAGCTACAAATCTTTGCCATTAAGTTCTCCAACCATGAAACTGAATCTCACTAGTCCATAAA
AGGGTCAAAAAAGAGAAGAAGGTGGAAGAAGTGTGTAAGGTCAAGAATTTACTGTTCCAGCCT
CAGTGGTGTGAGAAATAATGGGAAGAGGAGGATGCAACATTACAGCAATACAAGATGTTACTGGTGCCCA
TATTGATGTGGATAAACAAGAAATGAAGATGGAGAGAGAATGATTACAATAAGGGGTGGTACAGAATCA
ACAAGATATGCAGTTCAACTTATCAATGCACCTTATTCAAGATCCTGCAAGGAACTAGAAGACTTGATTC
CTAAAAACCATATCAGGACACCTGCCAGCACCAAGTCCATTACAAAACCTTCTCATCTGGAGTAGGCAC
CACAGCAACTTCCAGCAAGAATGCATTTCCCTTGGGTGCTCCAGCTCTTGTGACATCACAGGCAACAACA

TTATCTACGTTCCAGCCCACTAATAAACTTAGTAAGAACGTGCCAACAAATGTACGCTCTCCTTTCCCGG
TGTCTCTTCCCTTAGCTTATCCTCATCCTCATTTTGTCTCTTGGCTGCTCAAACATGCAACAGATTCC
GCATCCTCGTTACCTATGGCACAATTTGGAGGAACCTTCTCACCTCACCTAACACCTGGGGACCATT
CCCGTGAGACCTGTGAATCCTGGGAATACTAGTAGTTCTCCAAAGCATAATAATACAGCCCGTCTACCTA
ATCAGAATGGGCCTGTTTTACCATCAGAATCTCCTGGACTGGCTACTACCGGTTGCTCTATCACTGTCTC
TTCTGTAGTTGCTGCCAGTCAGCAACTATGCATGACTAATCCCGGACTCCTTCATCCGTCAGAAAGCAG
TTGTTTGTGTGTGCCTAAGACCAGTCTCCAGCAACAGTGATTCTCCGTGACAAGCACTAGTAGTT
CCTTGCTTGTGTCTCCACATCTATCACTAGTGGACACGTTACCACCACATTTATGCCTGCACCTAC
TCAAGTACCACTTTCTTCACAAAAGGTGGAGTCTTTCTCTGTGCATACCGCTCCCAAAGAGAAAAGTGCC
ACACAGGACCAGCCCTTGACAAACCTATGTACACCATCTCCAGCAGCTACCAGTTGTAATAGCTCTGCCA
GCAACACCTCAGGAGCTCCAGAGGCTCATCCATCCAGTACCCCTCCTCCTCCTCCGGGTAATACACAAGA
GGAGGGACAGCCCGTCCAAGGCATCTGATTTAAGTCTGTGTCAATGCCTTTTGCCTCGAACTCAGAAA
GCTCCATTGACTTTGGCATCACCCAGATTGGTTGCTGTGATAATCGGGACACTGGTAGTTTACCTCAGT
TAACTGTACCAGCCTCGAGTTTCTCATCGAATGCAGCCAGAGGTTCTTTTACTCAGTGGTACCAAA
TGCAACTATGCACCAGGATCCCAGTCAATTTTGTACCAATCCAGTTCCTTTAACACCACCTCAAGT
CCACCGGCTGCAGTGCAGCTTTCTCAGCTGTGAACATTATGAATGGTTCTCAAGTGCACATAAACCCAG
CAAATAAGTCTTTGCAACCAACATTCGGCCAGCCACACTTTTAACTCAGTGTCTTTTGTAGAT
TGGTCAGGTGCCAGCTAACCAAGGGTGGGAGATGGACCTCTGCCCTCAAGAGTTGCTGCAGATGCCTCT
TTCAGTGTTCAGTCACTTTCTGAGTAACTCTGTACTTGGACACTTGGAAAATGTGCACCCTGACAAC
CCAAGCACCTGGCTTCAGACCACCGTCACAGAGAGTTTCCACTAGTCCAGTTGGGTTGCCATCTATTGA
CCCATCAGGCAATTCCCATCTGCTGCTGCTCCTGACAAGTTTCTCTGGCATACCAGGGACAAGAGTT
TTTCTGCAAGGGCCAGCACCTGTCCGCACTCCTAGTTTCAACAGACAACATTTTCTCCCCACCCTTGG
CAAGCGCCTCAAACACATGTGACTCTCTATTCCATCTGTTTCTTCGGGATCATCTTACCTCTTTTCAGC
CACTTCAGCACCTCCAACATTTGGCCAAACAACCAAAAGGAAACAGTGCCAGTCAAGATCGAAAGATACCT
CCTCCCATTGGAACAGAGAGGCTGGCCAGGATTCGGCAAGGAGGCTCTGTTGCACAAGCACCTGTAGGGA
CCAGTTTTGTTGCTCCTGTTGGACACGGTGGGATCTGGTCAATTTGGTGTCAATGCTATGTCAGAAGGCTT
ATCAGGTTGGTCACAATCTGTTATAGGAAACCAATCCAATGCATCAACAGTTATCAGACCCAAGCACATTC
TCCCAGCATCAGCCAATGGAGAGAGATGATTAGGAATGGTAGCTCCCACTAACATTTTCCACCGCCAA
TGGGCTGCCGATTTCCATGTATGGAGGCACCATTATACCCTCTCACCTCAGCTTGTGACGTTCCAGG
GGGCCACTGTTCAATGGACTTCACAACCCAGATCCTGCTTGGAAATCCTATGATAAAAAGTTATCCAGAAT
TCAGCTGAATGCACTGAAGCCAGCAGATTTGGCTGGCACGTGGGCACCTCATATTGAAACATGCATC
TCAAAATATGCAAC

ACGCGTACGCGGCCGCTCGAG - GFP Tag - GTTTAA

Protein Sequence:

>MG215517 representing NM_175375
 Red=Cloning site Green=Tags(s)

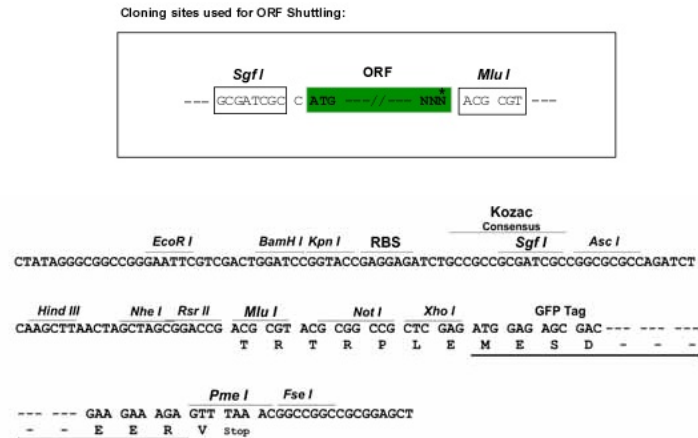
```

MLTDSGGGGTSFEEDLDSVAPRSAPAGASEPPPPGGVGLGIRTVRLFGEAGPAPGVGGGGGGGGSSSSS
SAGGGDAALDFKLAALVLRGTGGGGASGSDEDEVSEVESFILDQEDLDNPVLTSEIFLSSTAEGADLRT
VDPETQARLEALLEAAGIGKLTADGKAFADPEVLRRLTSSVSCALDEAAAALTRMRAENTHSTGQVDTR
SLAEACSDGDVNAVVRKLLDEGRSVNEHTEEGESLLCLACSAGYYELAQVLLAMHANVEDRGNKGDITPLM
AASSGGYLDIVKLLLLHDADVNSQSATGNTALTYACAGGFIDIVKLLNEGANIEDHNENGTPLMEAAS
AGHVEVARVLLDHGAGINTHSNEFKESALTLACYKGHLDMVRFLLEAGADQEHKTDDEMHTALMEACMDGH
VEVARLLLLDSGAQVNMPADSFESPLTLAACGGHVELAALLIERGANLEEVDNDEGYTPLMEAAREGHEEMV
ALLLAQGANINAQTEETQETALTLACCGGFSEVADFLIKAGADIELGCSTPLMEASQEGHLELVKYLAA
GANVHATTATGDALTACENGHDTVDVLLQAGAHLEHESEGGRTPLMKAARAGHLCTVQFLISKGANV
NRATANNDHTVVSLACAGGHLAVVELLLAHGADPTHRLLKDGSTMLIEAAKGGHTNVVSYLLDYPNNVLSV
PTTDVSQLTSPSQDESQVPRVPIHTLAMVVPQEPDRTSQETSTALLGVQKGASKQKSSSLQVADQDLLP
PFHPYQPLECIVEETEGKLNELGQRTSAIEKAQLKLELIQGEPLNKDKIEELKKNREEQVQKKKKILKE
LQKVERQLQMKTQQQFTKEYLETKGQRDTEPHQCSNRGVFMAGEEDGSLPQDHSSSESQLDVTFLFKDH
DIDDKQQSPPSAEQIDFVVPVQLSSPQCFFSDLGNSGTNSLVLQKVSGNQQIVGQPQIAIAGHEQGLLV
QEPDGLMVAQTLTDLTDDLIAAVSTRVPVGSNNPSTTECPTPESCQYTPSNMATPSTPPVYPSVDI
DAHTESNHDTALTLACAGGHEELVSVLIARDAKIEHRDKKGFPLILAATAGHVGVVEILLDKGGDIEAQ
SERTKDTPLSLACSGGRQEVVDLLLAGANKEHRNVSDYTPLSLAASGGYVNIKILLNAGAEINSRTGS
KLGISPLMLAAMNGHVPVAVKLLLDMGSDINAQIETNRNTALTLACFQGRAEVVSLLLDRKANVEHRAKTG
LTPLEAASGGYAEVGRVLLDKGADVNPVPSRDTALIAADKGHYKFCCELLINRGAHIDVRNKKNGT
PLWLASNGGHFDVVQLLVQAGADVDAADRKITPLMSAFRKGHVKVVQYLVEKVSQFSPDIECMRYIATI
TDKELLKKCHQCVEIVKAKDQAAEANKNASILLKELDLEKSREESRQALAAKREKRKEKRKKKKEEQ
KRKQEDEENKPKENSEQPEGEDEENDEVEQEIPIEPPSATTTTTIGISATSTFTTNVFGKKRANVVTTP
STNRNKNKNKTKESPPTAHLILPEPHISLAQQKADKNKINGEPRGGGAGGNSDSNDIDSTDCNSESSGG
KSQEF SFPVDVNPASDKRCSTVVSSQEEKAVTTT SKTQTRLDGEVNSMSTSYKSLPLSSPTMKLNL TSPK
RGQKREEGWKEVVRRSKKL SVPASVVSRI MGRGGCNITAIQDVTGAHIDVDKQDKNGERMITIRGGTES
TRYAVQLINALIQDPAKELEDLIPKNHIRTPASTKSIHTNFSSGVGTTATSSKNAPFLGAPALVTSQATT
LSTFQPTNKL SKNVPTNVRSPFPVSLPLAYPHPHFALLAAQTMQQIRHPRLPMAQFGGTFSPSPNTWGPF
PVRPVNPGNTSSSPKHNNARLPNQNGPVL PSESPGLATTGCPITVSSVVAASQQLCMTNSRTPSSVRKQ
LFACVPKTSPPATVISSVTSTSSSLPSVSTSI TSGHVTTTFMPAPTQVPLSSQKVESFSVIPPPEKVS
TQDQPLTNLCTPSAATSCNSSASNTSGAPEAHPSTPPPPGNTQEEGQPSKASDLSPVMPFASNSET
APLTLASPRLVAAADRDTGSLPQLTVPAPRVSHRMQPRGSFYSVVPNATMHQDPQSI FVTNVPVLP TTPQG
PPAAVQLSSAVNIMNGSQVHINPANKSLQPTFGPATL FNHFSSLFDSGQVPANQGWGDGGLPSRVAADAS
FTVQS AFLSNSVLGHLENVHPDNSKAPGFRPPSQRVSTSPVGLPSIDPSGNSP SAAAPLTSFSGIPGTRV
FLQGPAPVGTSPFNQRHFSHPWTSASNTCDSP IPSVSSGSSSPLSATSAPPTLGQQPKGNSASQDRKIP
PPIGTERLARIRQGGVAQAPVGT SFVAPVGHGGIWSFGVNMSEGLSGWSQSVIGNHPMHQQLSDPSTF
SQHQPMERDDSGMVAPTNI FHQPMGLPISMYGGTIIP SHPQLADVPGGPLFNGLHNPDPAWNPMIKVIQN
SAECTEAQQIWPGTWAPHIGNMHLKYVN
    
```

TRTRPLE - GFP Tag - V

Restriction Sites:

Sgfl-Mlul

Cloning Scheme:


ACCN: NM_175375

ORF Size: 7644 bp

OTI Disclaimer: The molecular sequence of this clone aligns with the gene accession number as a point of reference only. However, individual transcript sequences of the same gene can differ through naturally occurring variations (e.g. polymorphisms), each with its own valid existence. This clone is substantially in agreement with the reference, but a complete review of all prevailing variants is recommended prior to use. [More info](#)

OTI Annotation: This clone was engineered to express the complete ORF with an expression tag. Expression varies depending on the nature of the gene.

Components: The ORF clone is ion-exchange column purified and shipped in a 2D barcoded Matrix tube containing 10ug of transfection-ready, dried plasmid DNA (reconstitute with 100 ul of water).

- Reconstitution Method:**
1. Centrifuge at 5,000xg for 5min.
 2. Carefully open the tube and add 100ul of sterile water to dissolve the DNA.
 3. Close the tube and incubate for 10 minutes at room temperature.
 4. Briefly vortex the tube and then do a quick spin (less than 5000xg) to concentrate the liquid at the bottom.
 5. Store the suspended plasmid at -20°C. The DNA is stable for at least one year from date of shipping when stored at -20°C.

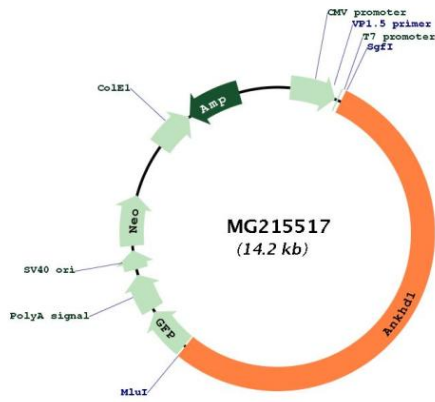
Note: Plasmids are not sterile. For experiments where strict sterility is required, filtration with 0.22um filter is required.

RefSeq: [NM_175375.3](#), [NP_780584.2](#)

RefSeq Size: 8251 bp

RefSeq ORF: 7647 bp
 Locus ID: 108857
 Cytogenetics: 18 B2

Product images:



Circular map for MG215517